

-L- REV (LT) CURVE DATA

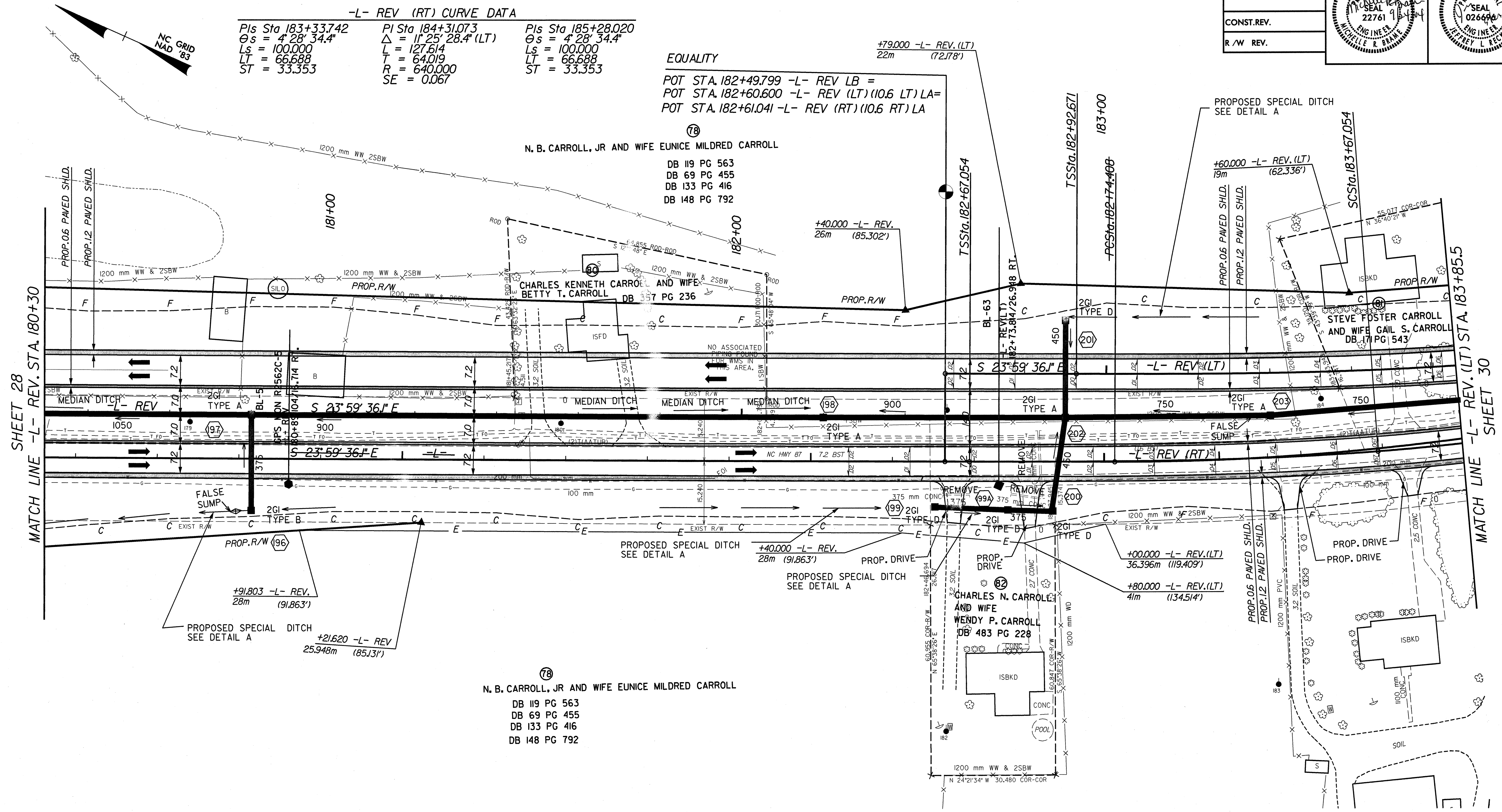
Pls Sta 183+59.358 θs = 4° 28' 34.4" Ls = 100.000 LT = 66.688 ST = 33.353	PI Sta 184+56.689 Δ = 11° 25' 28.4" (LT) L = 127.614 T = 64.019 R = 640.000 SE = 0.067	Pls Sta 185+53.637 θs = 4° 28' 34.4" Ls = 100.000 LT = 66.688 ST = 33.353
---	---	---

-L- REV (RT) CURVE DATA

Pls Sta 183+33.742 θs = 4° 28' 34.4" Ls = 100.000 LT = 66.688 ST = 33.353	PI Sta 184+31.073 Δ = 11° 25' 28.4" (LT) L = 127.614 T = 64.019 R = 640.000 SE = 0.067	Pls Sta 185+28.020 θs = 4° 28' 34.4" Ls = 100.000 LT = 66.688 ST = 33.353
---	---	---

EQUALITY

POT STA. 182+49.799 -L- REV LB =
POT STA. 182+60.600 -L- REV (LT) (10.6 LT) LA=
POT STA. 182+61.041 -L- REV (RT) (10.6 RT) LA



SHEET 28
MATCH LINE -L- REV. STA. 180+30

MATCH LINE -L- REV. (LT) STA. 183+85.5
SHEET 30

(78)
N. B. CARROLL, JR AND WIFE EUNICE MILDRED CARROLL
DB 119 PG 563
DB 69 PG 455
DB 133 PG 416
DB 148 PG 792

- DRIVEWAY NOTES:**
- ALL PROP. DRIVEWAY RADII 3.0m UNLESS OTHERWISE SHOWN.
 - PROP. DRIVEWAY WIDTHS AT END OF RADII SHALL BE 4.9m MIN. UNLESS OTHERWISE SHOWN. TAPER DRIVEWAY TO EXISTING DRIVEWAY WIDTH.

SEE SHEET 44 FOR -L- REV. PROFILE