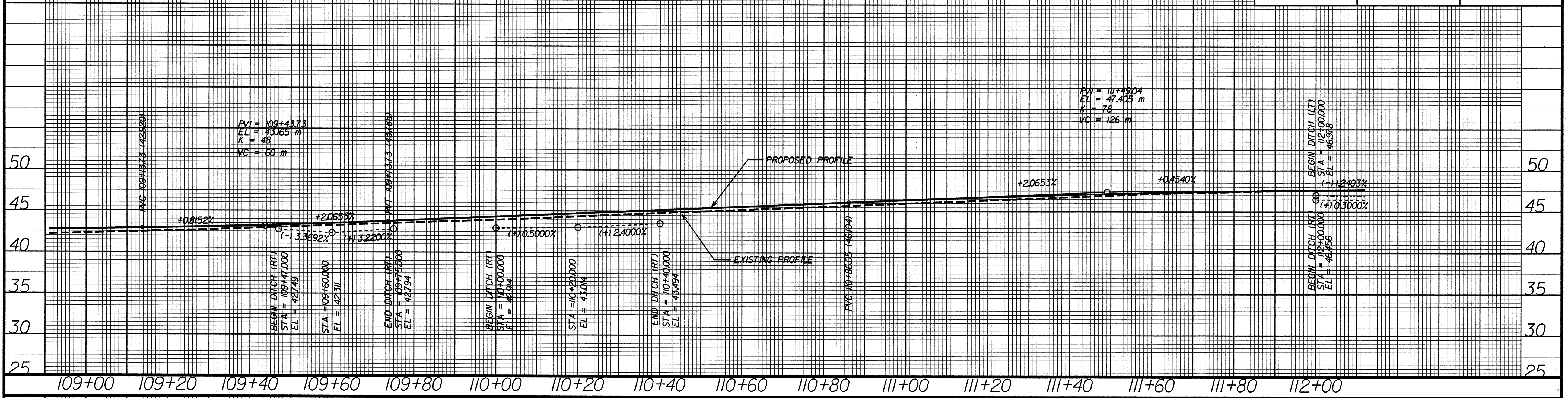




NOTE:  
 EXISTING PROFILE IS UNDER THE GRADE POINT ON EXISTING  
 PAVEMENT SIDE EXCEPT IN TRANSITION AREAS WHERE EXISTING  
 PROFILE IS SHOWN UNDER EACH GRADE POINT.

L-REV

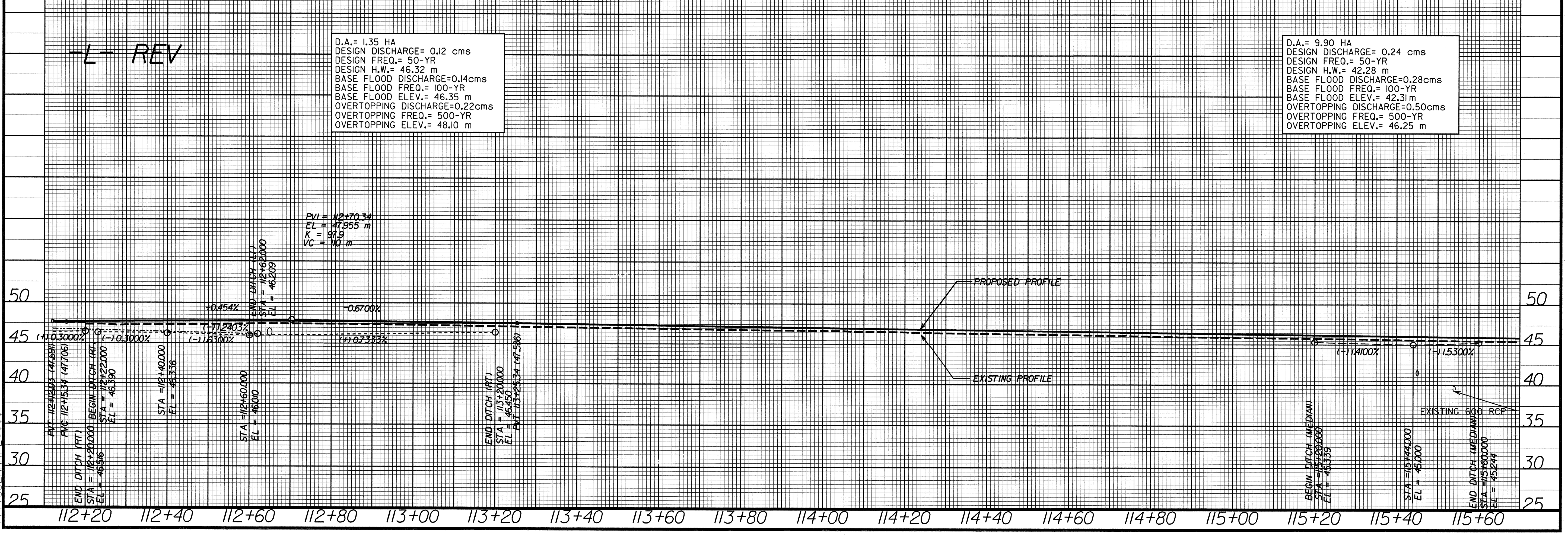
BM \*31 ELEV. 43.663m SURVEY EL STA 16+35 OFFSET 23m LEFT  
 RR SPIKE SET IN ROOT OF 20" WATER OAK TREE  
 N 109°41'03.6" E 630446.308



L-REV

D.A. = 1.35 HA  
 DESIGN DISCHARGE = 0.12 cms  
 DESIGN FREQ. = 50-YR  
 DESIGN H.W. = 46.32 m  
 BASE FLOOD DISCHARGE = 0.14 cms  
 BASE FLOOD FREQ. = 100-YR  
 BASE FLOOD ELEV. = 46.35 m  
 OVERTOPPING DISCHARGE = 0.22 cms  
 OVERTOPPING FREQ. = 500-YR  
 OVERTOPPING ELEV. = 48.10 m

D.A. = 9.90 HA  
 DESIGN DISCHARGE = 0.24 cms  
 DESIGN FREQ. = 50-YR  
 DESIGN H.W. = 42.28 m  
 BASE FLOOD DISCHARGE = 0.28 cms  
 BASE FLOOD FREQ. = 100-YR  
 BASE FLOOD ELEV. = 42.31 m  
 OVERTOPPING DISCHARGE = 0.50 cms  
 OVERTOPPING FREQ. = 500-YR  
 OVERTOPPING ELEV. = 46.25 m



SYSTEM\$\$\$\$  
 DOWN\$\$\$\$  
 NAME\$\$\$\$  
 \$\$\$