

-L- REV

NOTE:
EXISTING PROFILE IS UNDER THE GRADE POINT ON EXISTING PAVEMENT SIDE EXCEPT IN TRANSITION AREAS WHERE EXISTING PROFILE IS SHOWN UNDER EACH GRADE POINT.

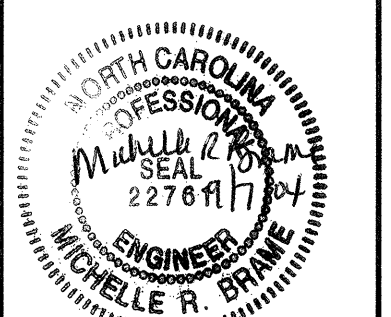

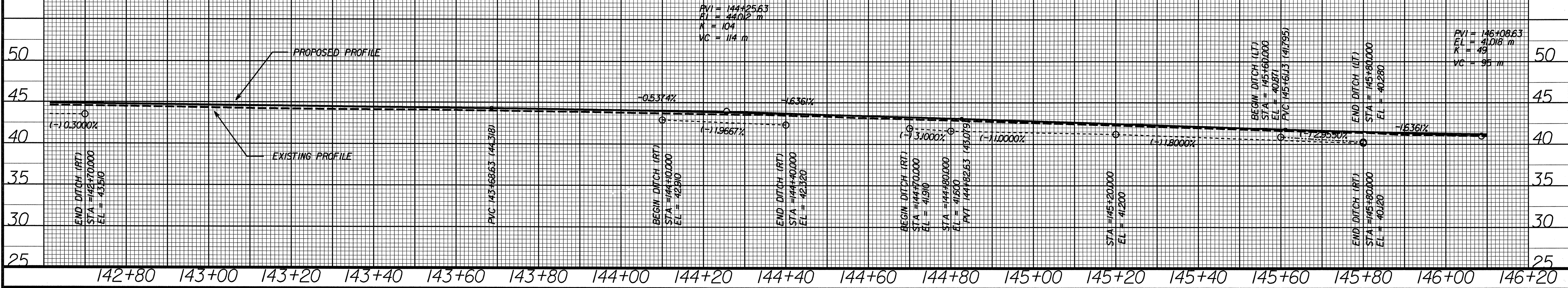
PROJECT REFERENCE NO. R-2562C SHEET NO. 39

ROADWAY DESIGN ENGINEER MICHELLE R. BRINE

HYDRAULICS ENGINEER JEFFREY L. RECK

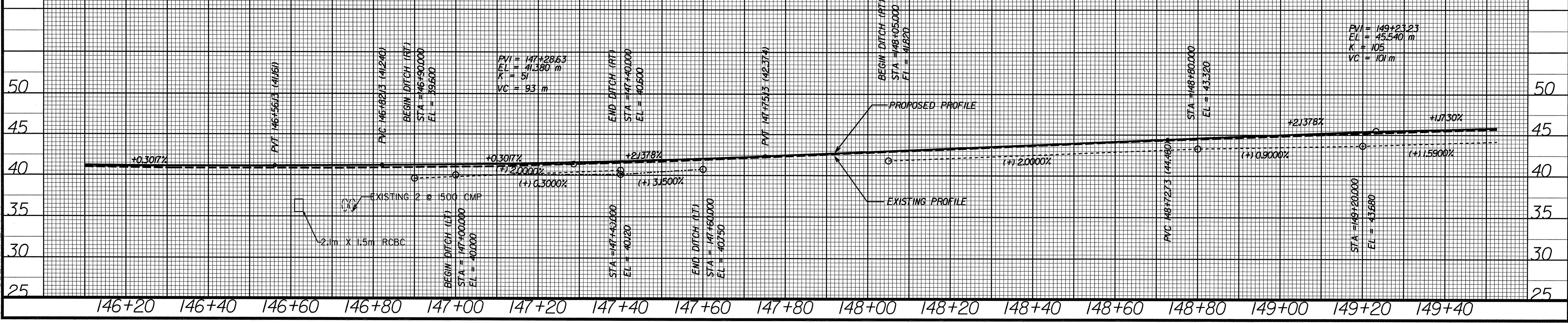
CONST. REV.

R / W REV.

D.A.= 2.25 SQ. KM.
 DESIGN DISCHARGE= 4.7 cms
 DESIGN FREQ.= 50-YR
 DESIGN H.W.= 37.39 m
 BASE FLOOD DISCHARGE= 5.9 cms
 BASE FLOOD FREQ.= 100-YR
 BASE FLOOD ELEV.= 37.60 m
 OVERTOPPING DISCHARGE=>8.4cms
 OVERTOPPING FREQ.= >500-YR
 OVERTOPPING ELEV.= 40.93 m

-L- REV



\$\$\$SYTIME\$\$\$\$\$
\$\$\$DCN\$\$\$\$\$
\$\$\$RN\$\$\$\$\$
\$\$\$V\$\$\$\$\$