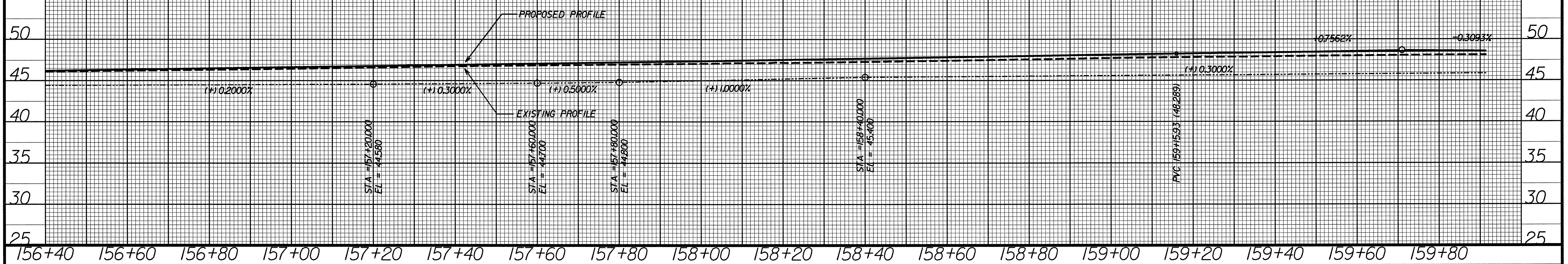


NOTE:
 EXISTING PROFILE IS UNDER THE GRADE POINT ON EXISTING PAVEMENT SIDE EXCEPT IN TRANSITION AREAS WHERE EXISTING PROFILE IS SHOWN UNDER EACH GRADE POINT.

-L- REV

BM#10: ELEV. 46.481m SURVEY BL STA. 64+10 OFFSET 17m RIGHT
 RR SPIKE SET IN ROOT OF 24' PINE TREE
 N 105125.975 E 633393.036

PVI = 159+70.93
 EL = 48.708 m
 K = 103
 VC = 110 m

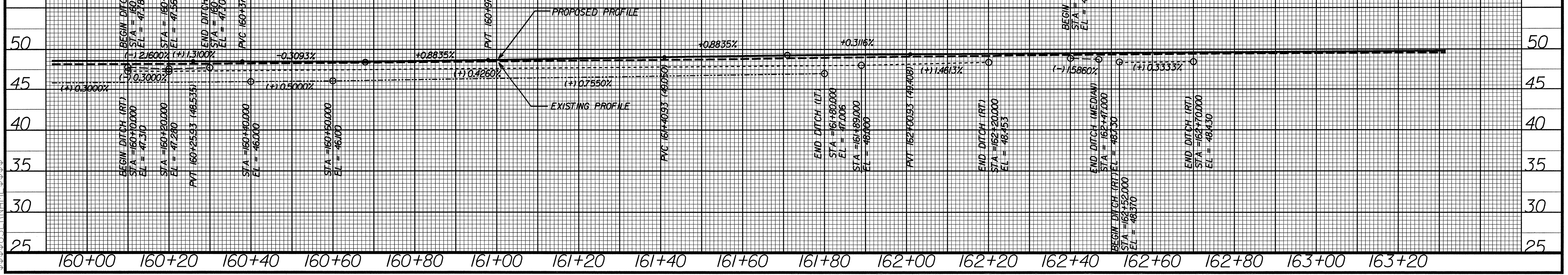


-L- REV

BM#11: ELEV. 48.743m SURVEY BL STA. 69+19 OFFSET 8m RIGHT
 RR SPIKE SET IN ROOT OF 30' PECAN TREE
 N 104624.306 E 633285.695

PVI = 160+67.93
 EL = 48.405 m
 K = 50
 VC = 60 m

PVI = 161+70.93
 EL = 49.315 m
 K = 105
 VC = 60 m



\$\$\$SYTIME\$\$\$\$\$
 \$\$\$CDON\$\$\$\$\$
 \$\$\$USERNAVE\$\$\$\$\$