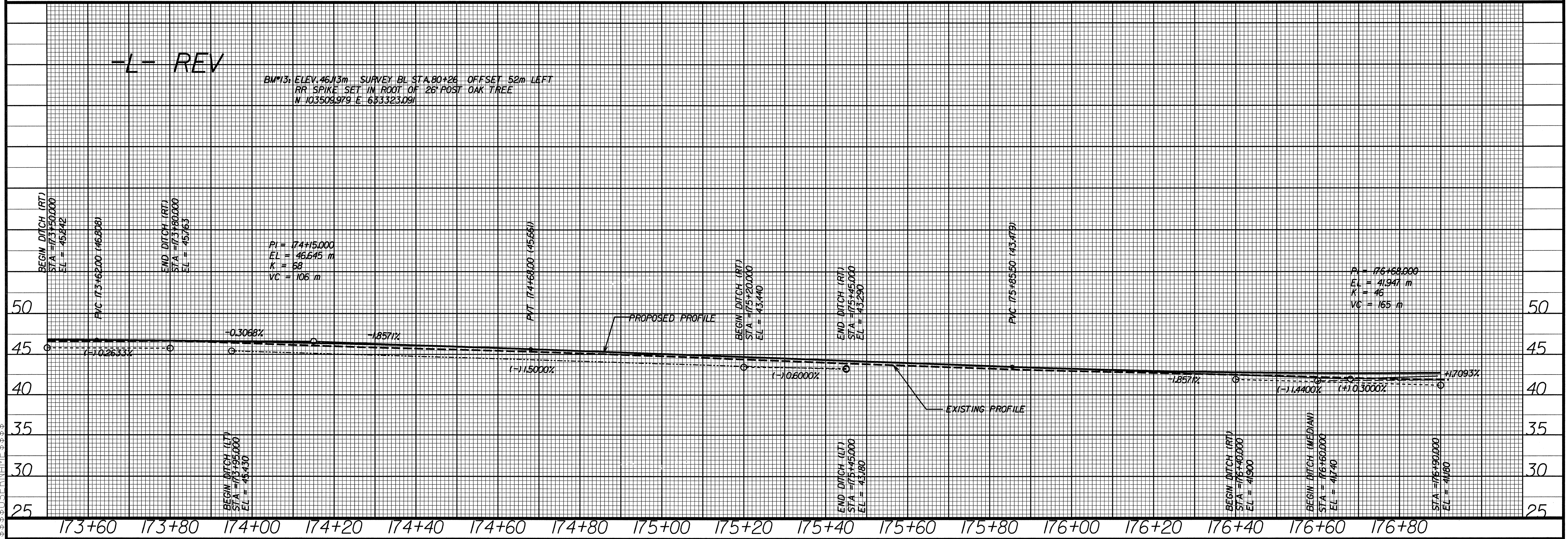
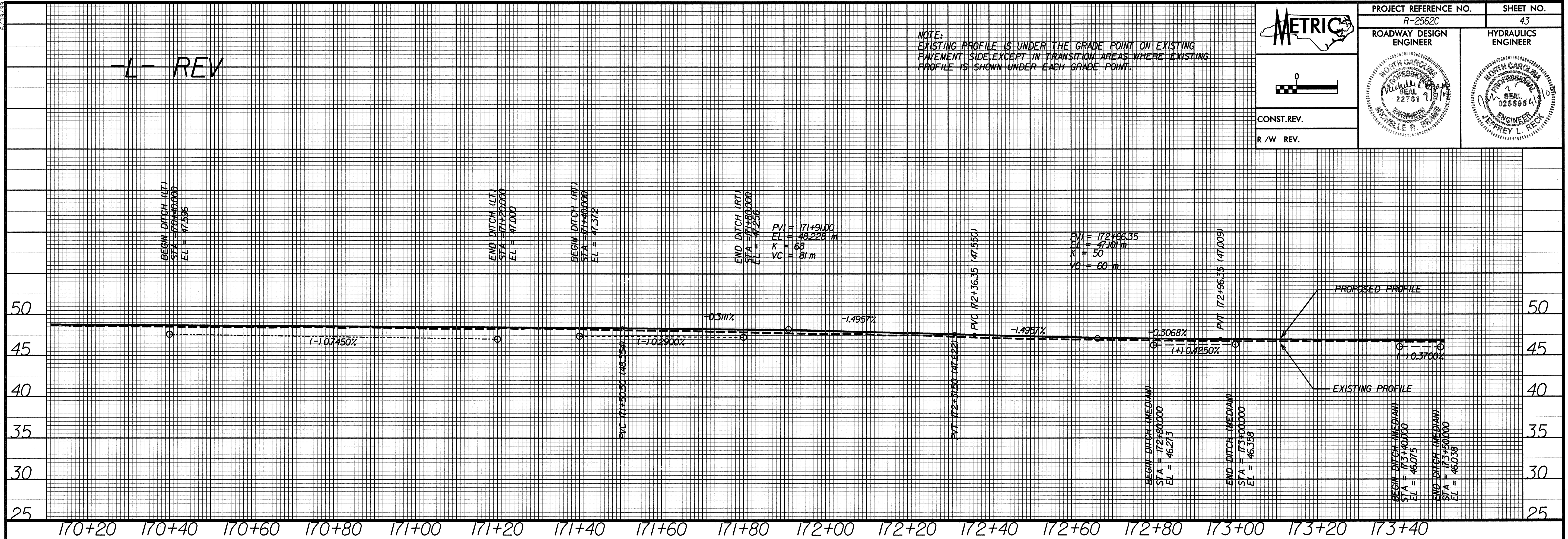


METRIC

CONST. REV.
R/W REV.

PROJECT REFERENCE NO. R-2562C	SHEET NO. 43
ROADWAY DESIGN ENGINEER MICHELLE R. BRADY	HYDRAULICS ENGINEER JEFFREY L. RECK

NOTE:
EXISTING PROFILE IS UNDER THE GRADE POINT ON EXISTING PAVEMENT SIDE, EXCEPT IN TRANSITION AREAS WHERE EXISTING PROFILE IS SHOWN UNDER EACH GRADE POINT.



\$\$\$\$\$ SYSTEM \$\$\$\$\$\$
\$\$\$\$\$ USER \$\$\$\$\$\$
\$\$\$\$\$ NAME \$\$\$\$\$\$
\$\$\$\$\$ DON \$\$\$\$\$\$