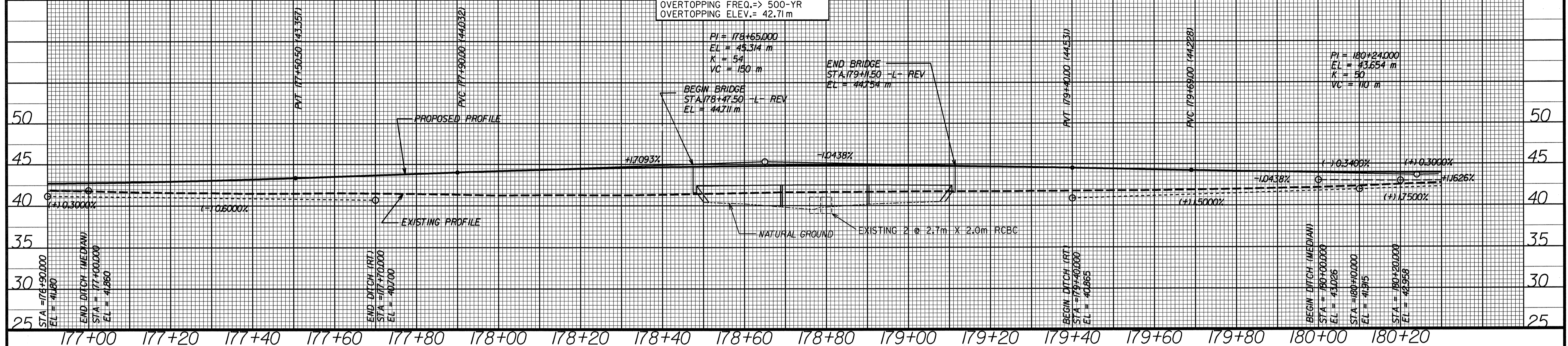


NOTE:  
EXISTING PROFILE IS UNDER THE GRADE POINT ON EXISTING PAVEMENT SIDE EXCEPT IN TRANSITION AREAS WHERE EXISTING PROFILE IS SHOWN UNDER EACH GRADE POINT.

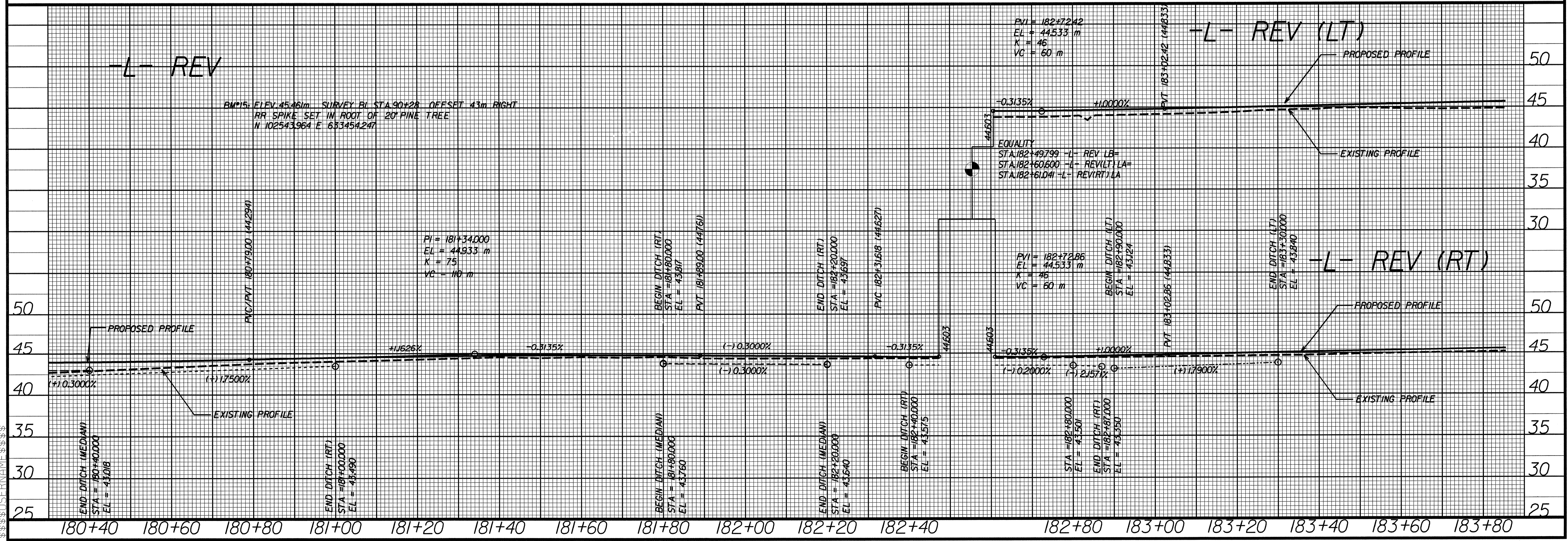
**STRUCTURE HYDRAULIC DATA**  
 D.A. = 6.65 SQ. KM.  
 DESIGN DISCHARGE = 18 cms  
 DESIGN FREQ. = 50-YR  
 DESIGN ELEV. = 40.69 m  
 BASE FLOOD DISCHARGE = 23 cms  
 BASE FLOOD FREQ. = 100-YR  
 BASE FLOOD ELEV. = 40.77 m  
 OVERTOPPING DISCHARGE = 37 cms  
 OVERTOPPING FREQ. = 500-YR  
 OVERTOPPING ELEV. = 42.71 m

BM#14: ELEV. 41.568m SURVEY BL STA. 86+35 OFFSET 78m LEFT  
 RR SPIKE SET IN ROOT OF 15 SWEET GUM TREE  
 N 102950.639 E 633394.833



-L- REV

BM#15: ELEV. 45.461m SURVEY BL STA. 90+28 OFFSET 43m RIGHT  
 RR SPIKE SET IN ROOT OF 20 PINE TREE  
 N 102543.964 E 633454.247



-L- REV (LT)

-L- REV (RT)

\$\$\$\$\$SYTIME\$\$\$\$\$  
 \$\$\$Y\$\$\$\$\$  
 \$\$\$DGN\$\$\$\$\$  
 \$\$\$USERNAME\$\$\$\$\$