

PROJECT REFERENCE NO. R-2562C	SHEET NO. 4
R/W SHEET NO.	
ROADWAY DESIGN ENGINEER	HYDRAULICS ENGINEER
PRELIMINARY PLANS DO NOT USE FOR CONSTRUCTION INCOMPLETE PLANS DO NOT USE FOR R/W ACQUISITION	

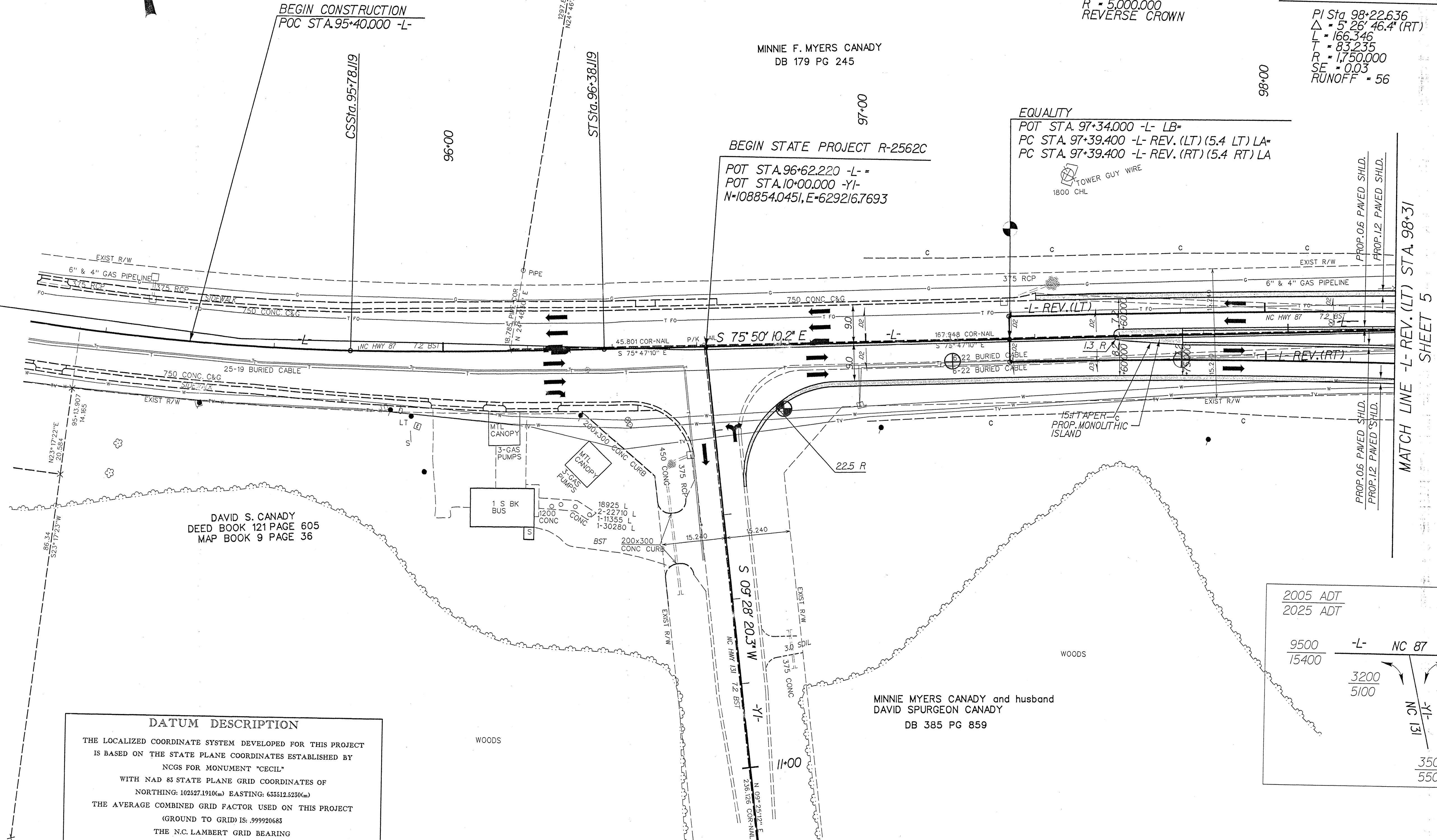
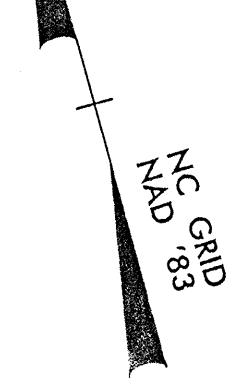
CONST. REV.  
R/W REV.

**-L- REV (RT) CURVE DATA**  
 PI Sta 98+22.636  
 $\Delta = 5^{\circ} 26' 46.4''$  (RT)  
 L = 166.346  
 T = 83.235  
 R = 1,750.000  
 SE = 0.03  
 RUNOFF = 56

**-L- REV (LT) CURVE DATA**  
 PI Sta 98+21.570  
 $\Delta = 1^{\circ} 52' 58.9''$  (RT)  
 L = 164.324  
 T = 82.169  
 R = 5,000.000  
 REVERSE CROWN

**-L- CURVE DATA**

PIs Sta 94+27.088 $\Theta_s = 2^{\circ} 56' 17.7''$ Ls = 60.000 LT = 40.006 ST = 20.005	PI Sta 95+12.876 $\Delta = 1^{\circ} 50' 02.1''$ (LT) L = 131.037 T = 65.794 R = 585.000 SE = 0.05	PIs Sta 95+98.124 $\Theta_s = 2^{\circ} 56' 17.7''$ Ls = 60.000 LT = 40.006 ST = 20.005
---	---	---



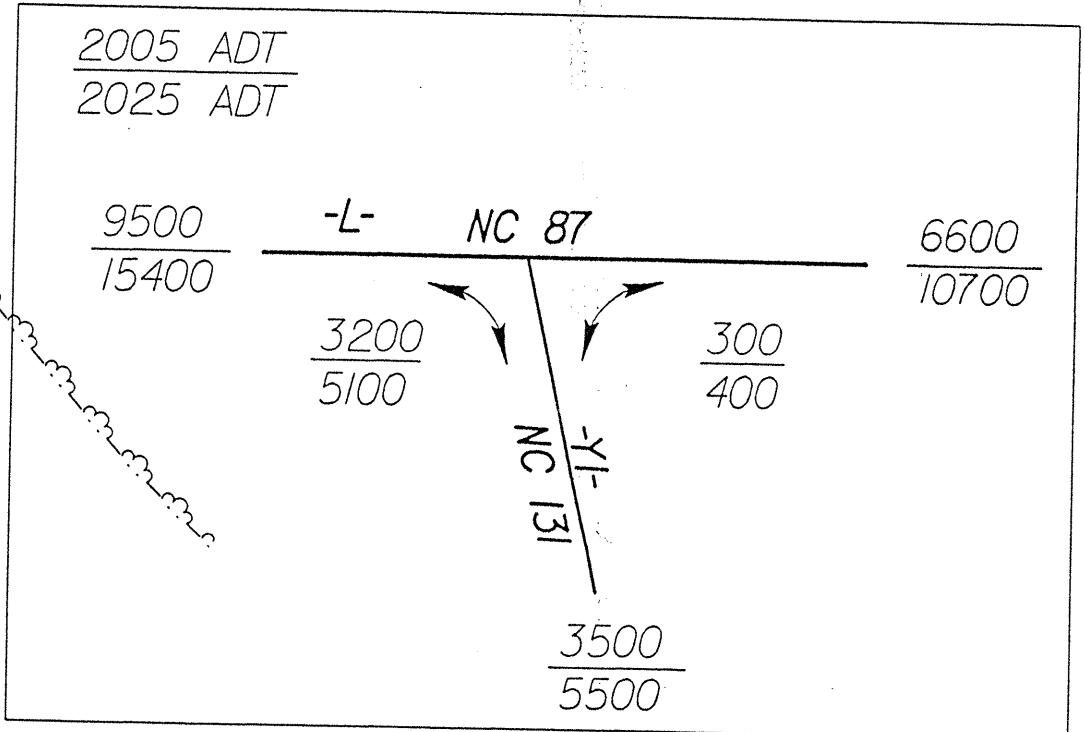
**DATUM DESCRIPTION**

THE LOCALIZED COORDINATE SYSTEM DEVELOPED FOR THIS PROJECT IS BASED ON THE STATE PLANE COORDINATES ESTABLISHED BY NCGS FOR MONUMENT "CECIL" WITH NAD 83 STATE PLANE GRID COORDINATES OF NORTHING: 102527.1910(m) EASTING: 635312.5230(m)

THE AVERAGE COMBINED GRID FACTOR USED ON THIS PROJECT (GROUND TO GRID) IS: .999920683

THE N.C. LAMBERT GRID BEARING LOCALIZED HORIZONTAL GROUND DISTANCE FROM "CECIL" TO -L- STATION 96+62.220 IS N 34 DEGREES 10 MINUTES 31.4 SECONDS W, 7647.4 m

ALL LINEAR DIMENSIONS ARE LOCALIZED HORIZONTAL DISTANCES VERTICAL DATUM USED IS NGVD 29



SEE SHEET 32 FOR -L- REV. PROFILE

MATCH LINE -L- REV. (LT) STA. 98+31 SHEET 5