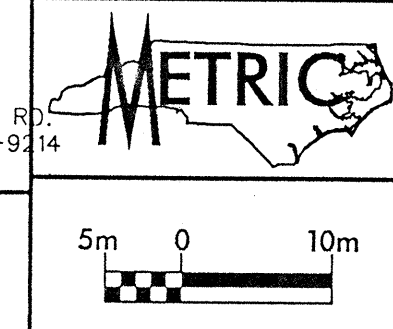


KCI Associates
of North Carolina, P.A.
SUITE 200, LANDMARK CENTER I, 4601 SIX FORKS RD.
RALEIGH, NC 27609-5210 (919) 783-9214
•ENGINEERS • PLANNERS • ECOLOGISTS



PROJECT REFERENCE NO. R-2562C	SHEET NO. 14
R/W SHEET NO.	
ROADWAY DESIGN ENGINEER	HYDRAULICS ENGINEER
PRELIMINARY PLANS DO NOT USE FOR CONSTRUCTION	
INCOMPLETE PLANS DO NOT USE FOR R/W ACQUISITION	
CONST. REV.	
R/W REV.	

WHITE C. PHARR, JR.
DB 223 PG 16

JAMES L. ALLEN, JR. & WIFE CYNTHIA JANE ALLEN
DB 311 PG 39

JAMES L. ALLEN
DB 292 PG 863

DANNY R. & WIFE JAMIE M. BOWEN
DB 398 PG 632

JANICE SHAW PHARR
DB 119 PG 497

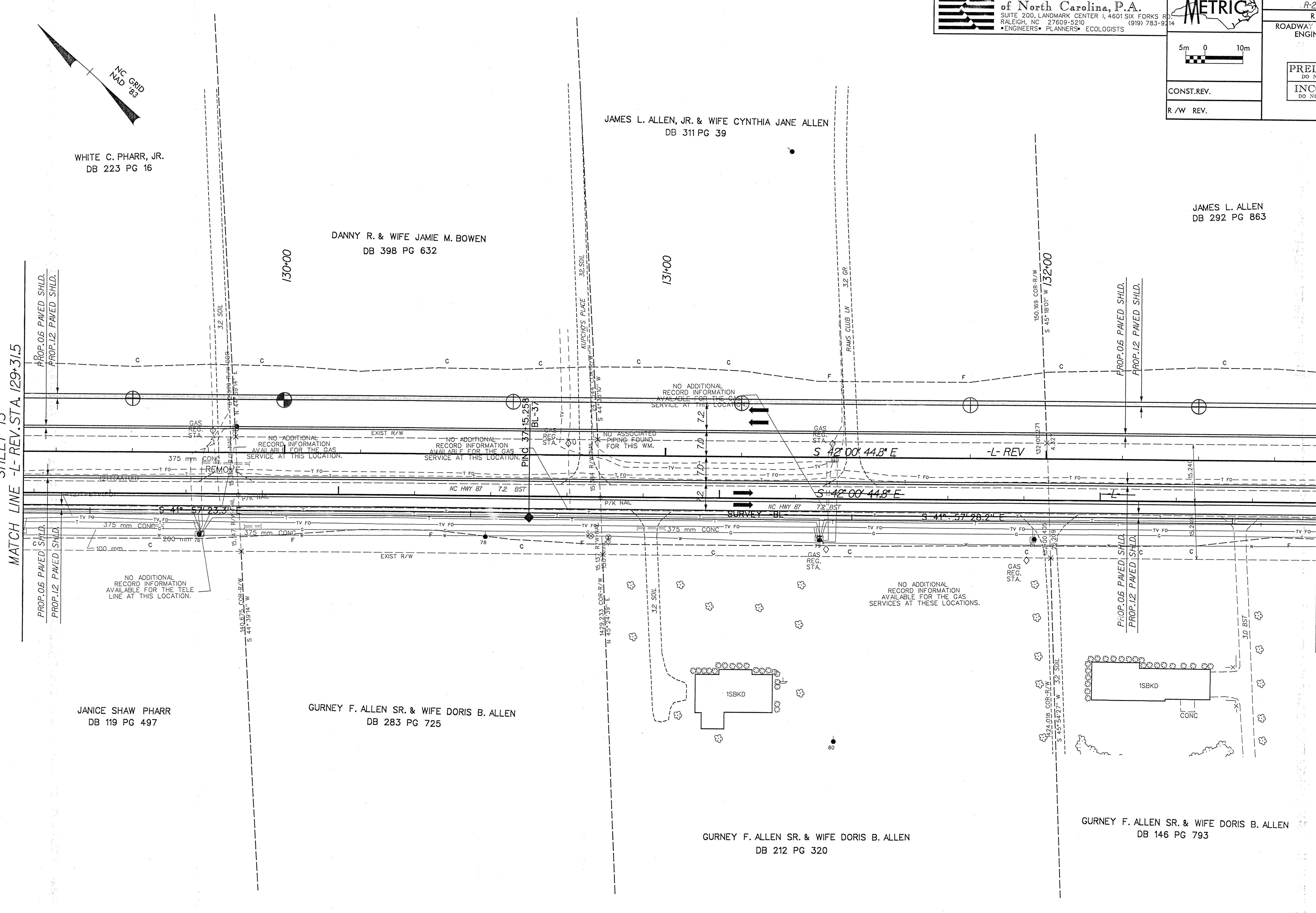
GURNEY F. ALLEN SR. & WIFE DORIS B. ALLEN
DB 283 PG 725

GURNEY F. ALLEN SR. & WIFE DORIS B. ALLEN
DB 212 PG 320

GURNEY F. ALLEN SR. & WIFE DORIS B. ALLEN
DB 146 PG 793

SHEET 13
MATCH LINE -L- REV. STA. 129+31.5

MATCH LINE -L- REV. STA. 132+71.5
SHEET 15



SEE SHEET 37 FOR -L- REV. PROFILE