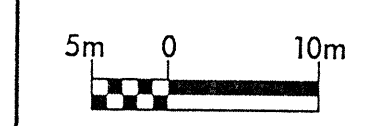


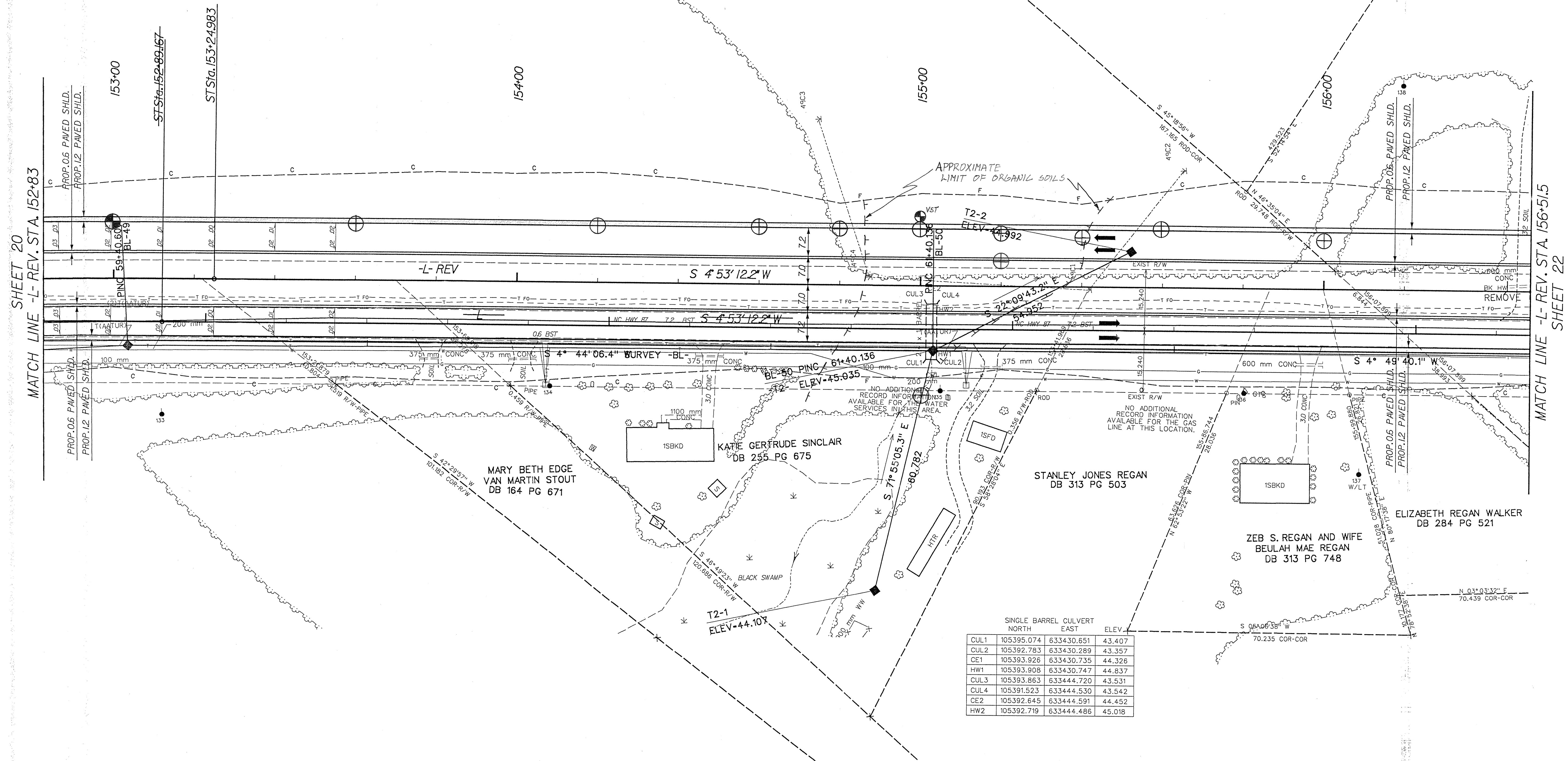
**KCI Associates of North Carolina, P.A.**  
 SUITE 200, LANDMARK CENTER 1, 4601 SIX FORKS ROAD  
 RALEIGH, NC 27609-5210 (919) 783-9114  
 ENGINEERS • PLANNERS • ECOLOGISTS

PROJECT REFERENCE NO. R-2562C		SHEET NO. 21	
R/W SHEET NO.			
ROADWAY DESIGN ENGINEER		HYDRAULICS ENGINEER	
CONST.REV.		PRELIMINARY PLANS DO NOT USE FOR CONSTRUCTION	
R/W REV.		INCOMPLETE PLANS DO NOT USE FOR R/W ACQUISITION	



INEZ C. ALLEN  
 DB 292 PG 858  
 DB 269 PG 225

J. A. GRIMES, JR. AND WIFE  
 PANSY HESTER GRIMES  
 DB 190 PG 625



SINGLE BARREL CULVERT			
NORTH	EAST	ELEV.	
CUL1	105395.074	633430.651	43.407
CUL2	105392.783	633430.289	43.357
CE1	105393.926	633430.735	44.326
HW1	105393.908	633430.747	44.837
CUL3	105393.863	633444.720	43.531
CUL4	105391.523	633444.530	43.542
CE2	105392.645	633444.591	44.452
HW2	105392.719	633444.486	45.018

MATCH LINE -L- REV. STA. 152+83

MATCH LINE -L- REV. STA. 156+51.5

SEE SHEET 40 FOR -L- REV. PROFILE