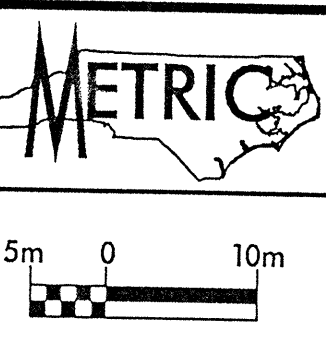


~~-L- REV CURVE DATA~~
~~PI Sta 157+04.436~~
 ~~$\Delta = 0^{\circ} 00' 32.9''$ (RT)~~
~~L = 1118 m~~
~~T = 0.559 m~~
~~R = 7,000,000 m~~
~~NORMAL CROWN~~

~~-L- CURVE DATA~~
~~PI Sta 156+81.474~~
 ~~$\Delta = 0^{\circ} 00' 32.9''$ (RT)~~
~~L = 1118 m~~
~~T = 0.559 m~~
~~R = 7,000,000 m~~

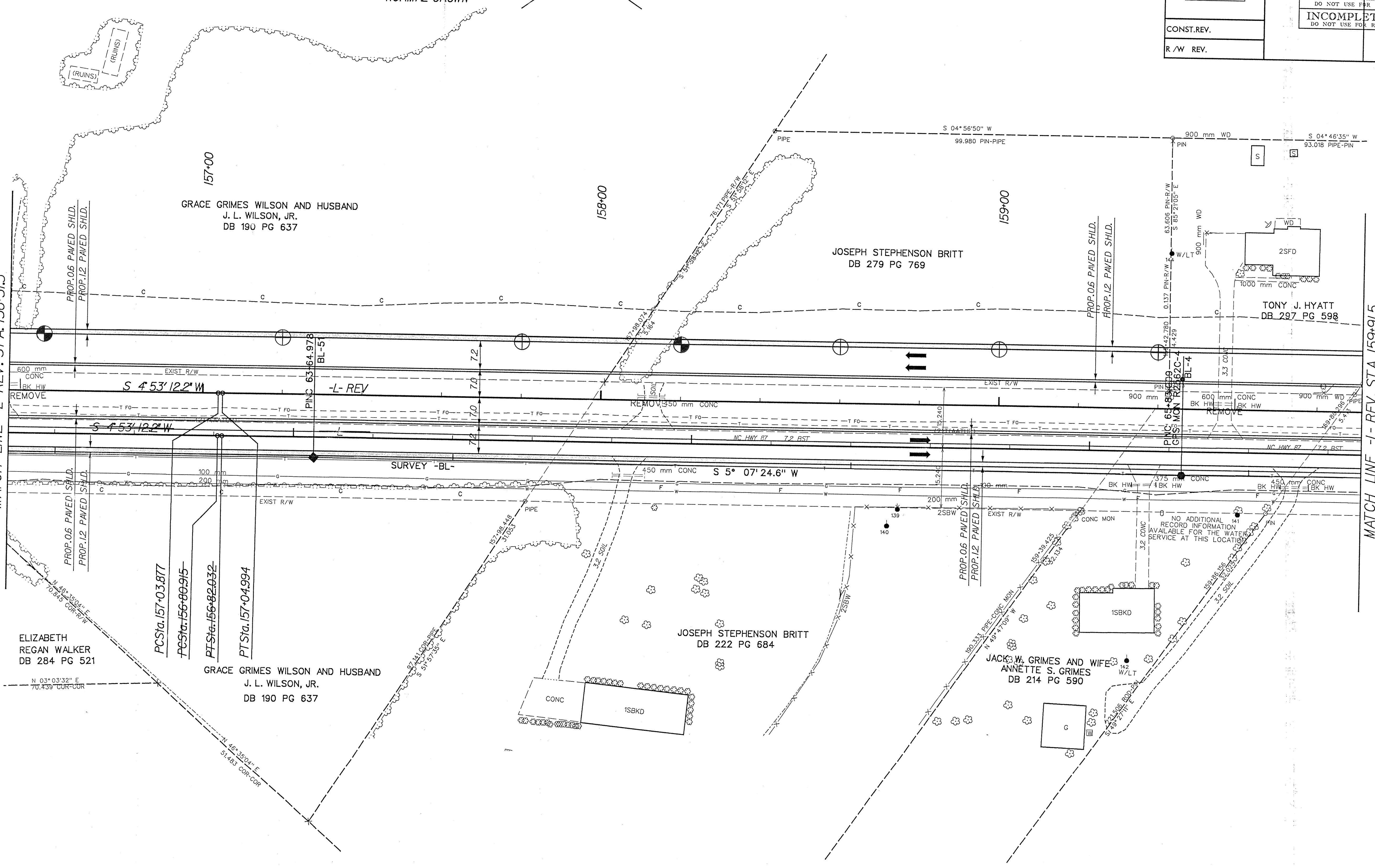
KCI Associates
of North Carolina, P.A.
 SUITE 200, LANDMARK CENTER I, 4601 SIX FORKS RD.
 RALEIGH, NC 27609-5210 (919) 783-9214
 ENGINEERS PLANNERS ECOLOGISTS



PROJECT REFERENCE NO. R-2562C	SHEET NO. 22
R/W SHEET NO.	
ROADWAY DESIGN ENGINEER	HYDRAULICS ENGINEER
PRELIMINARY PLANS DO NOT USE FOR CONSTRUCTION INCOMPLETE PLANS DO NOT USE FOR R/W ACQUISITION	
CONST. REV.	
R/W REV.	

SHEET 21
MATCH LINE -L- REV. STA. 156+51.5

MATCH LINE -L- REV. STA. 159+91.5
SHEET 23



SEE SHEET 41 FOR -L- REV. PROFILE