

**-L-REV (LT) CURVE DATA**

Pls Sta 183+59.358	PI Sta 184+56.689	Pls Sta 185+53.637
$\theta_s = 4' 28' 34.4''$	$\Delta = 11' 25' 28.4''$ (LT)	$\theta_s = 4' 28' 34.4''$
Ls = 100.000	L = 127.614	Ls = 100.000
LT = 66.688	T = 64.019	LT = 66.688
ST = 33.353	R = 640.000	ST = 33.353
	SE = 0.067	

**-L-REV (RT) CURVE DATA**

Pls Sta 183+33.742	PI Sta 184+31.073	Pls Sta 185+28.020
$\theta_s = 4' 28' 34.4''$	$\Delta = 11' 25' 28.4''$ (LT)	$\theta_s = 4' 28' 34.4''$
Ls = 100.000	L = 127.614	Ls = 100.000
LT = 66.688	T = 64.019	LT = 66.688
ST = 33.353	R = 640.000	ST = 33.353
	SE = 0.067	

**EQUALITY**  
 POT STA. 182+50.441 -L-REV LB -  
 POT STA. 182+60.600 -L-REV (LT) (10.6 LT) LA-  
 POT STA. 182+61.041 -L-REV (RT) (10.6 RT) LA

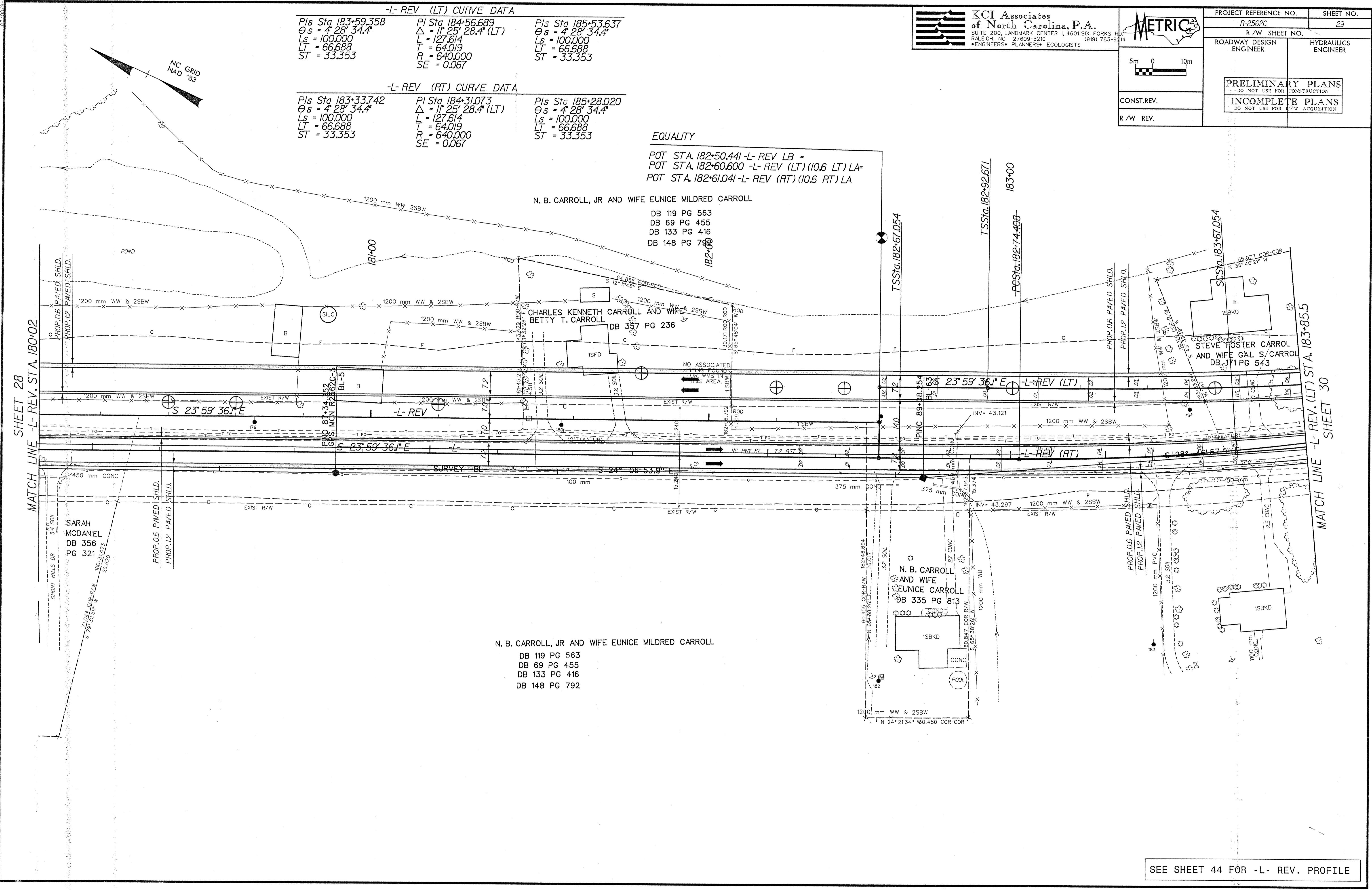
**N. B. CARROLL, JR AND WIFE EUNICE MILDRED CARROLL**  
 DB 119 PG 563  
 DB 69 PG 455  
 DB 133 PG 416  
 DB 148 PG 788

**CHARLES KENNETH CARROLL AND WIFE BETTY T. CARROLL**  
 DB 357 PG 236

**STEVE FOSTER CARROLL AND WIFE GAIL S. CARROLL**  
 DB 171 PG 543

**N. B. CARROLL AND WIFE EUNICE CARROLL**  
 DB 335 PG 813

**N. B. CARROLL, JR AND WIFE EUNICE MILDRED CARROLL**  
 DB 119 PG 563  
 DB 69 PG 455  
 DB 133 PG 416  
 DB 148 PG 792



SHEET 28  
MATCH LINE -L-REV. STA. 180+02

MATCH LINE -L-REV. (LT) STA. 183+85.5  
SHEET 30

SEE SHEET 44 FOR -L- REV. PROFILE