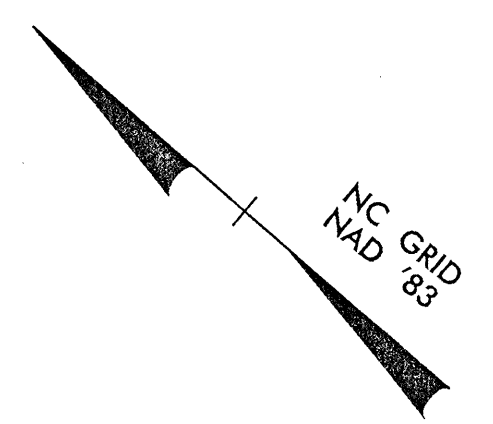


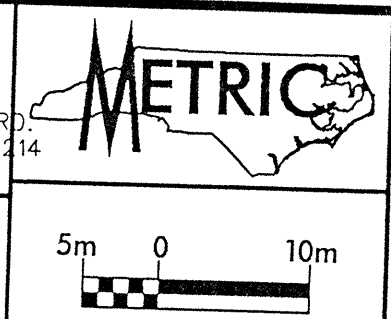
~~L-CURVE DATA~~
~~PI Sta 183+89.174~~
 ~~$\Delta = 20' 28' 31.3''$ (LT)~~
~~L = 225.130~~
~~T = 113.767~~
~~R = 633.016~~



-L- REV (LT) CURVE DATA
 Pls Sta 183+59.358 PI Sta 184+56.689 Pls Sta 185+53.637
 $\Theta s = 4' 28' 34.4''$ $\Delta = 11' 25' 28.4''$ (LT) $\Theta s = 4' 28' 34.4''$
 $L_s = 100.000$ $L = 127.614$ $L_s = 100.000$
 $LT = 66.688$ $T = 64.019$ $LT = 66.688$
 $ST = 33.353$ $R = 640.000$ $ST = 33.353$
 $SE = 0.067$

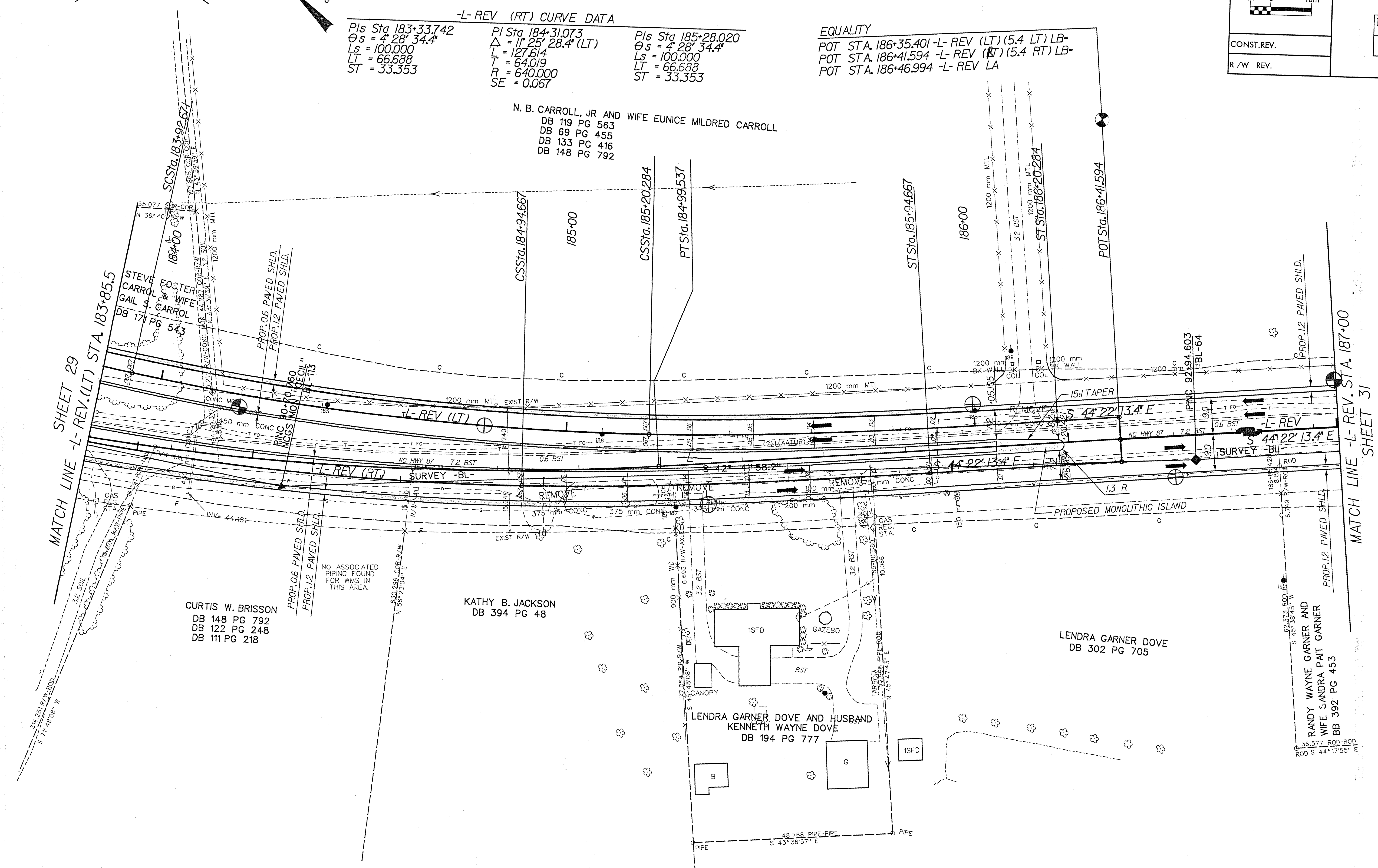
-L- REV (RT) CURVE DATA
 Pls Sta 183+33.742 PI Sta 184+31.073 Pls Sta 185+28.020
 $\Theta s = 4' 28' 34.4''$ $\Delta = 11' 25' 28.4''$ (LT) $\Theta s = 4' 28' 34.4''$
 $L_s = 100.000$ $L = 127.614$ $L_s = 100.000$
 $LT = 66.688$ $T = 64.019$ $LT = 66.688$
 $ST = 33.353$ $R = 640.000$ $ST = 33.353$
 $SE = 0.067$

KCI Associates
 of North Carolina, P.A.
 SUITE 200, LANDMARK CENTER I, 4601 SIX FORKS RD.
 RALEIGH, NC 27609-5210 (919) 783-9114
 ENGINEERS • PLANNERS • ECOLOGISTS



PROJECT REFERENCE NO. R-2562C	SHEET NO. 30
R/W SHEET NO.	
ROADWAY DESIGN ENGINEER	HYDRAULICS ENGINEER
PRELIMINARY PLANS DO NOT USE FOR CONSTRUCTION INCOMPLETE PLANS DO NOT USE FOR R/W ACQUISITION	
CONST. REV.	
R/W REV.	

EQUALITY
 POT STA. 186+35.401 -L- REV (LT) (5.4 LT) LB-
 POT STA. 186+41.594 -L- REV (RT) (5.4 RT) LB-
 POT STA. 186+46.994 -L- REV LA



SEE SHEET 45 FOR -L- REV. PROFILE