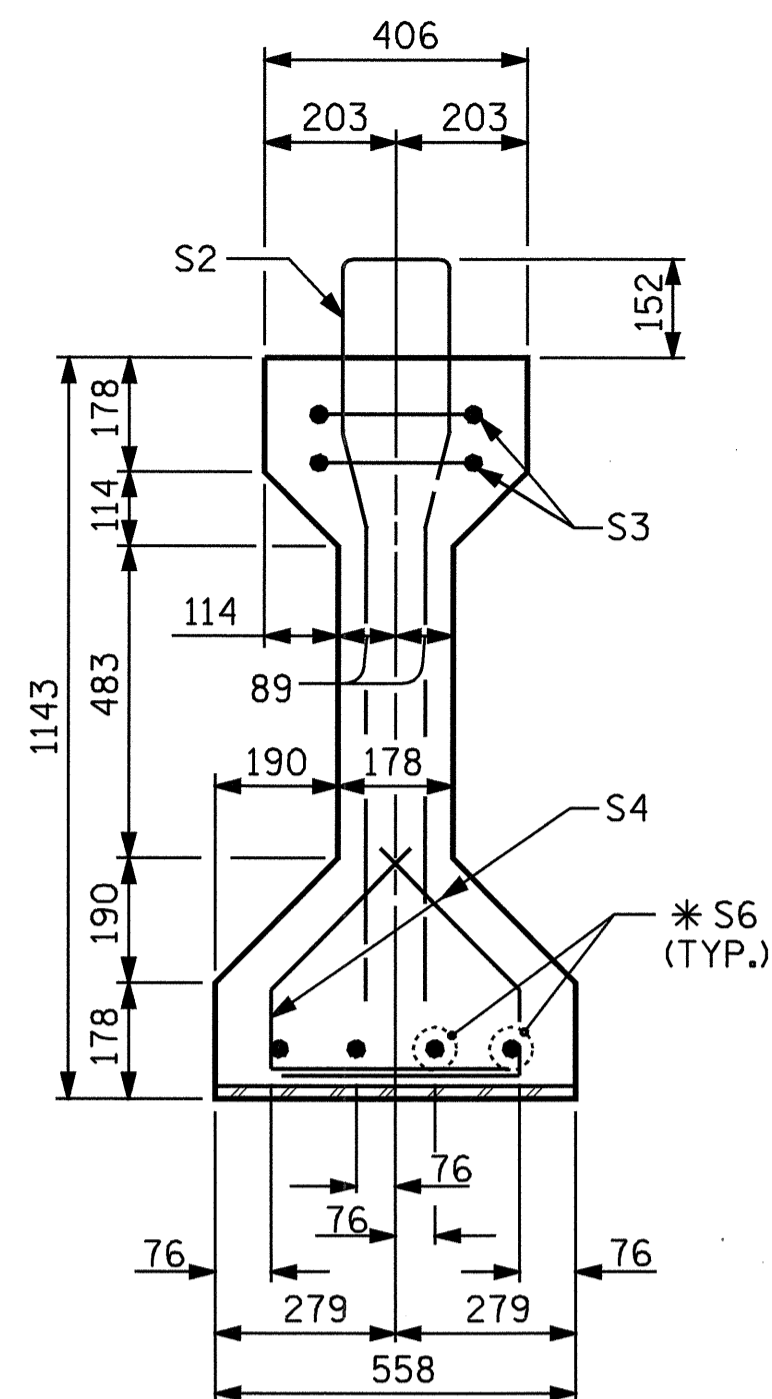
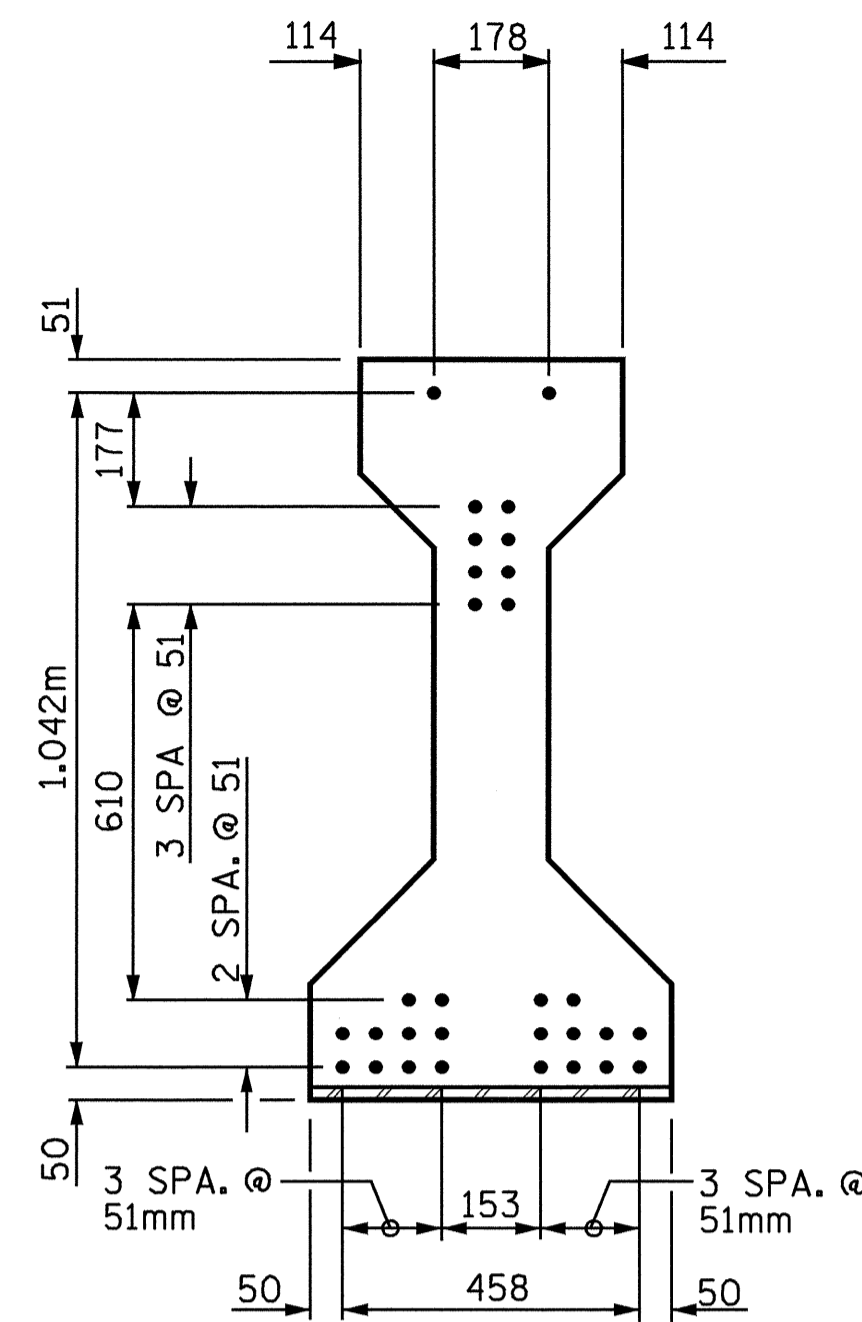


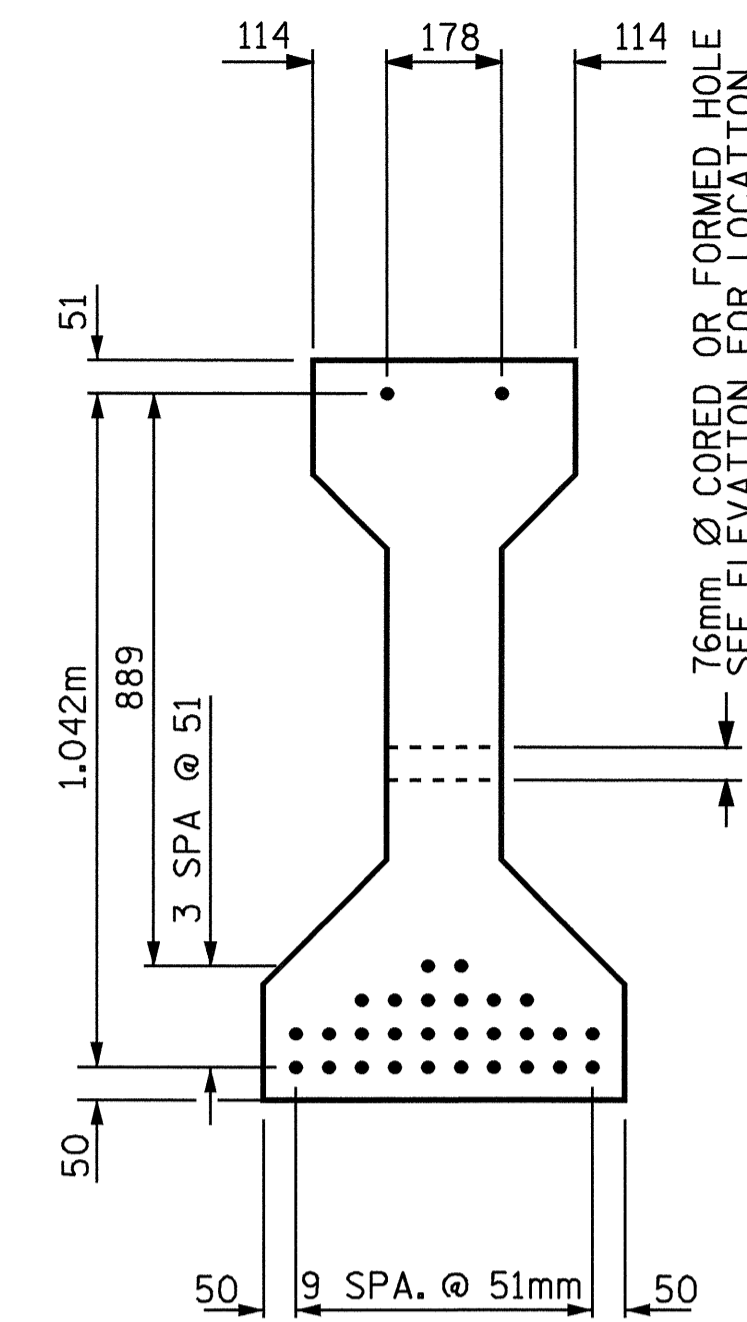
SECTION A-A



SECTION B-B

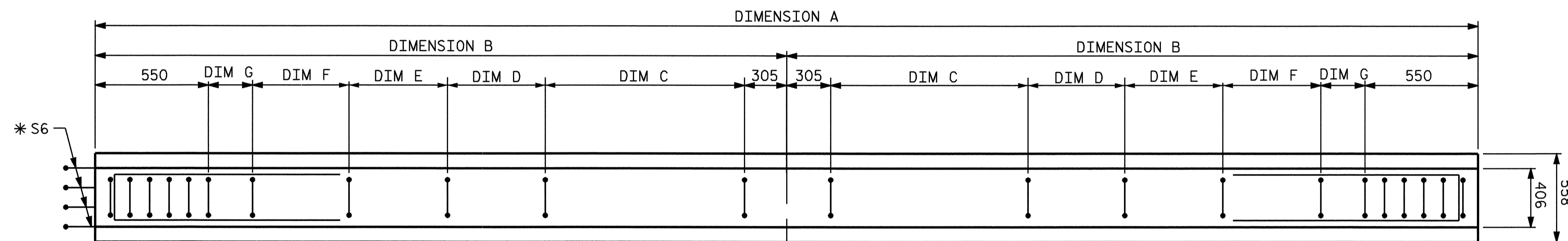


AT END OF GIRDER

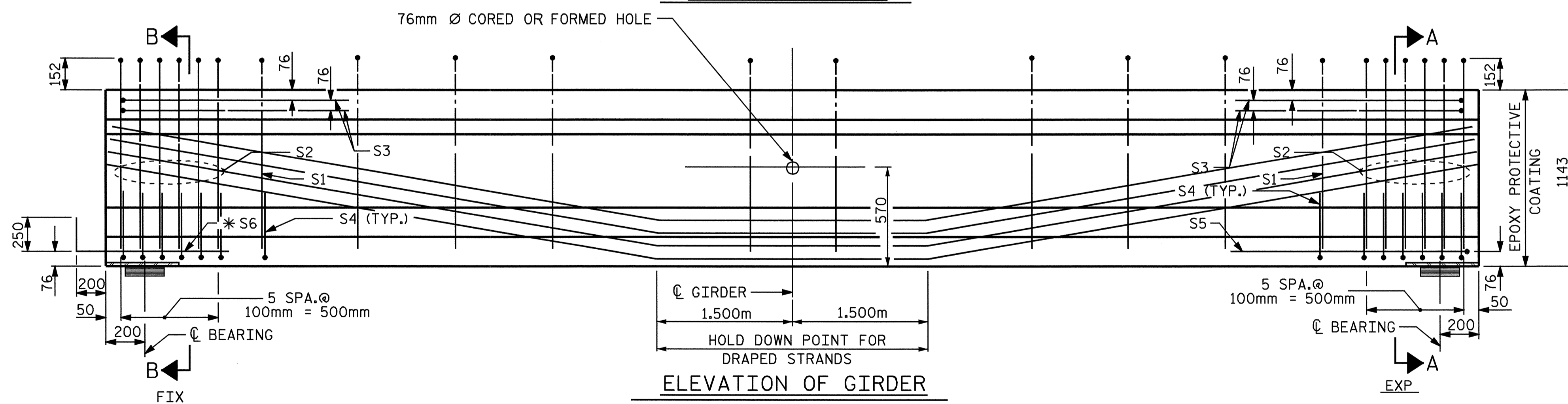


AT C OF GIRDER

12.70mm Ø LOW RELAXATION STRAND LAYOUT



PLAN OF GIRDER



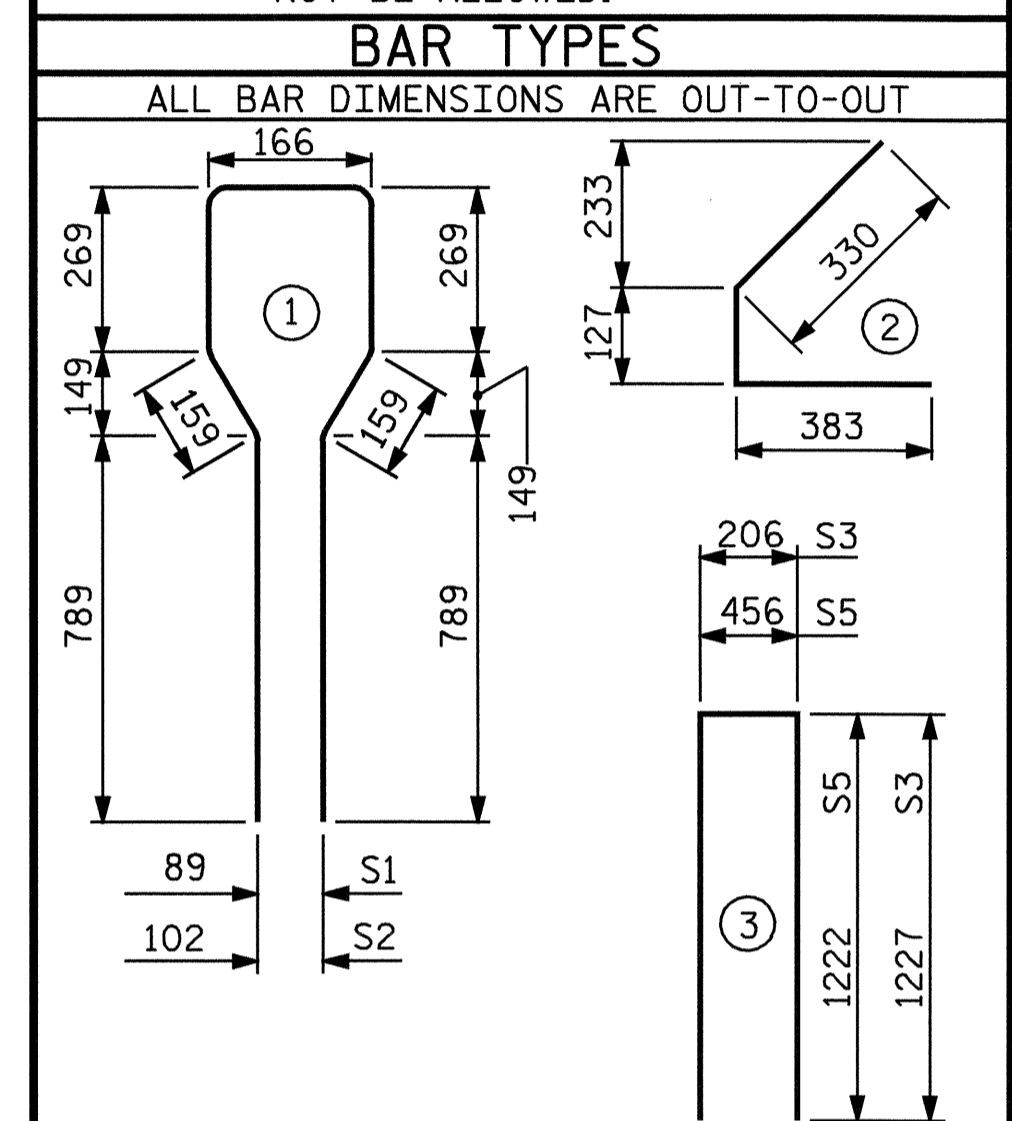
ELEVATION OF GIRDER

	GIRDER DIMENSIONS						
	DIMENSION A	DIMENSION B	DIMENSION C	DIMENSION D	DIMENSION E	DIMENSION F	DIMENSION G
GIRDER 1	20.374 m	10.187 m	12 SPA. @ 450	7 SPA. @ 300	7 SPA. @ 200	132	3 SPA. @ 100
GIRDER 2	20.446 m	10.223 m	12 SPA. @ 450	7 SPA. @ 300	7 SPA. @ 200	168	3 SPA. @ 100
GIRDER 3	20.517 m	10.258 m	12 SPA. @ 450	7 SPA. @ 300	8 SPA. @ 200	103	2 SPA. @ 100
GIRDER 4	20.588 m	10.294 m	12 SPA. @ 450	7 SPA. @ 300	8 SPA. @ 200	139	2 SPA. @ 100
GIRDER 5	20.660 m	10.330 m	12 SPA. @ 450	7 SPA. @ 300	8 SPA. @ 200	175	2 SPA. @ 100

12.70mm Ø L. R. GRADE 270 STRANDS		
AREA (mm <sup>2</sup> )	ULTIMATE STRENGTH (KN PER STRAND)	APPLIED PRESTRESS (KN PER STRAND)
98.71	183.7	137.8

REINFORCING STEEL FOR ONE GDR.						
BAR	NUMBER	SIZE	TYPE	LENGTH	WEIGHT	
GDR. C1	S1	60	#13	1	2600	155
GDR. C2	S1	60	#13	1	2600	155
GDR. C3	S1	60	#13	1	2600	155
GDR. C4	S1	60	#13	1	2600	155
GDR. C5	S1	60	#13	1	2600	155
	S2	12	#19	1	2600	70
	S3	4	#13	3	2660	11
	S4	56	#13	2	840	47
	S5	1	#13	3	2900	3
	* S6	4	#16	STR	1120	7

\* NOTE: S6 BARS SHALL BE BENT BEFORE SHIPMENT. HEAT BENDING SHALL NOT BE ALLOWED.



QUANTITIES FOR ONE GIRDER			
	REINFORCING STEEL	41.4 MPa CONCRETE	12.70mm Ø L.R. STRANDS
	kg	m <sup>3</sup>	No.
GIRDER C1	293	7.355	30
GIRDER C2	293	7.381	30
GIRDER C3	293	7.406	30
GIRDER C4	293	7.432	30
GIRDER C5	293	7.458	30

GIRDERS REQUIRED		
NUMBER	LENGTH	TOTAL LENGTH
5	VARIES	102,585

PROJECT NO. R-2562C  
 BLADEN COUNTY  
 STATION: 178+79.500 -L- REV

SHEET 3 OF 4



STATE OF NORTH CAROLINA  
 DEPARTMENT OF TRANSPORTATION  
 STANDARD  
 AASHTO TYPE III  
 PRESTRESSED CONCRETE  
 GIRDER CONTINUOUS  
 FOR LIVE LOAD  
 (SPAN C) (LEFT LANE)

REVISIONS						SHEET NO.
NO.	BY:	DATE:	NO.	BY:	DATE:	S-12
1			3			TOTAL SHEETS 68
2			4			

ASSEMBLED BY : J. G. KHARVA	DATE : 06-08-04
CHECKED BY : E. L. OMILE	DATE : 08-25-04
DRAWN BY : ELR 8/91	REV. 5/16/97 EEM/RCW
CHECKED BY : GRP 8/91	REV. 7/17/98 RWW/LES
	REV. 10/17/00 RWW/LES