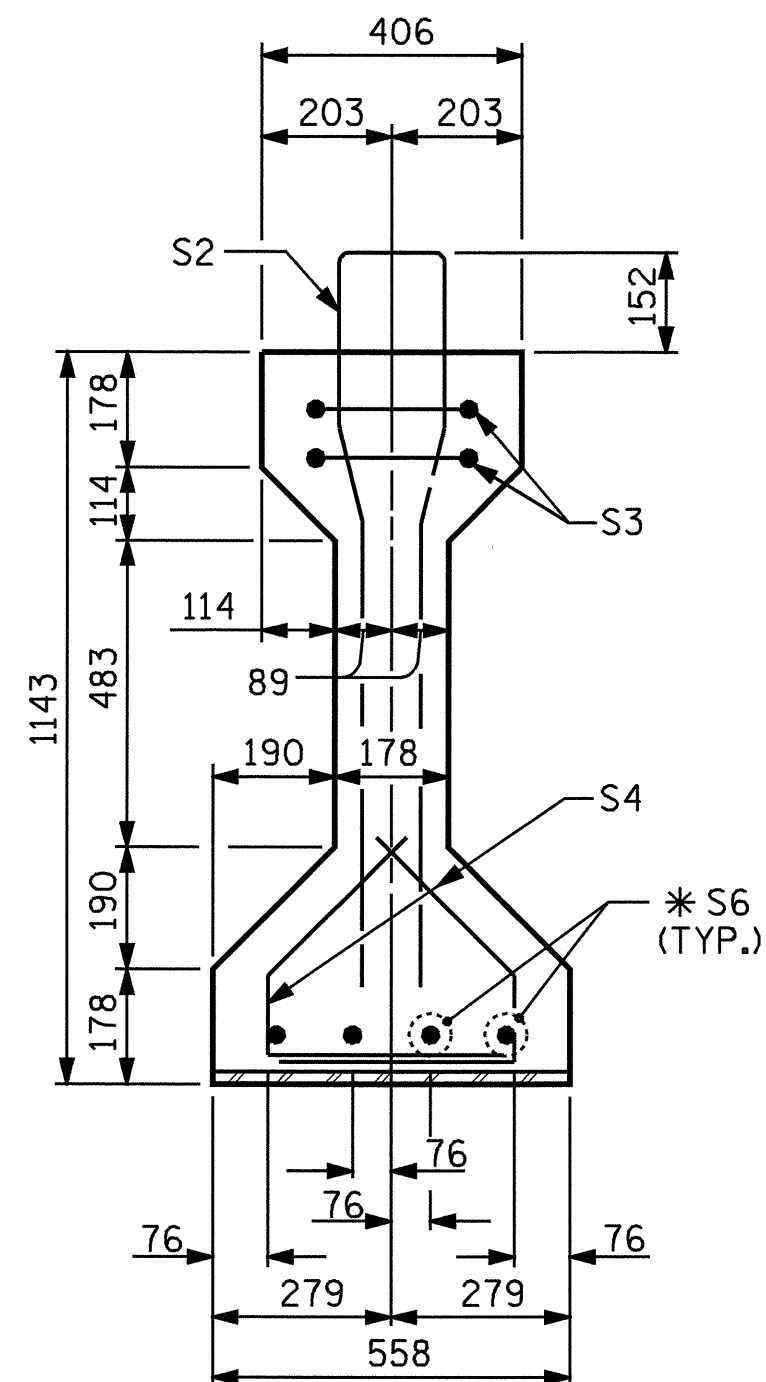
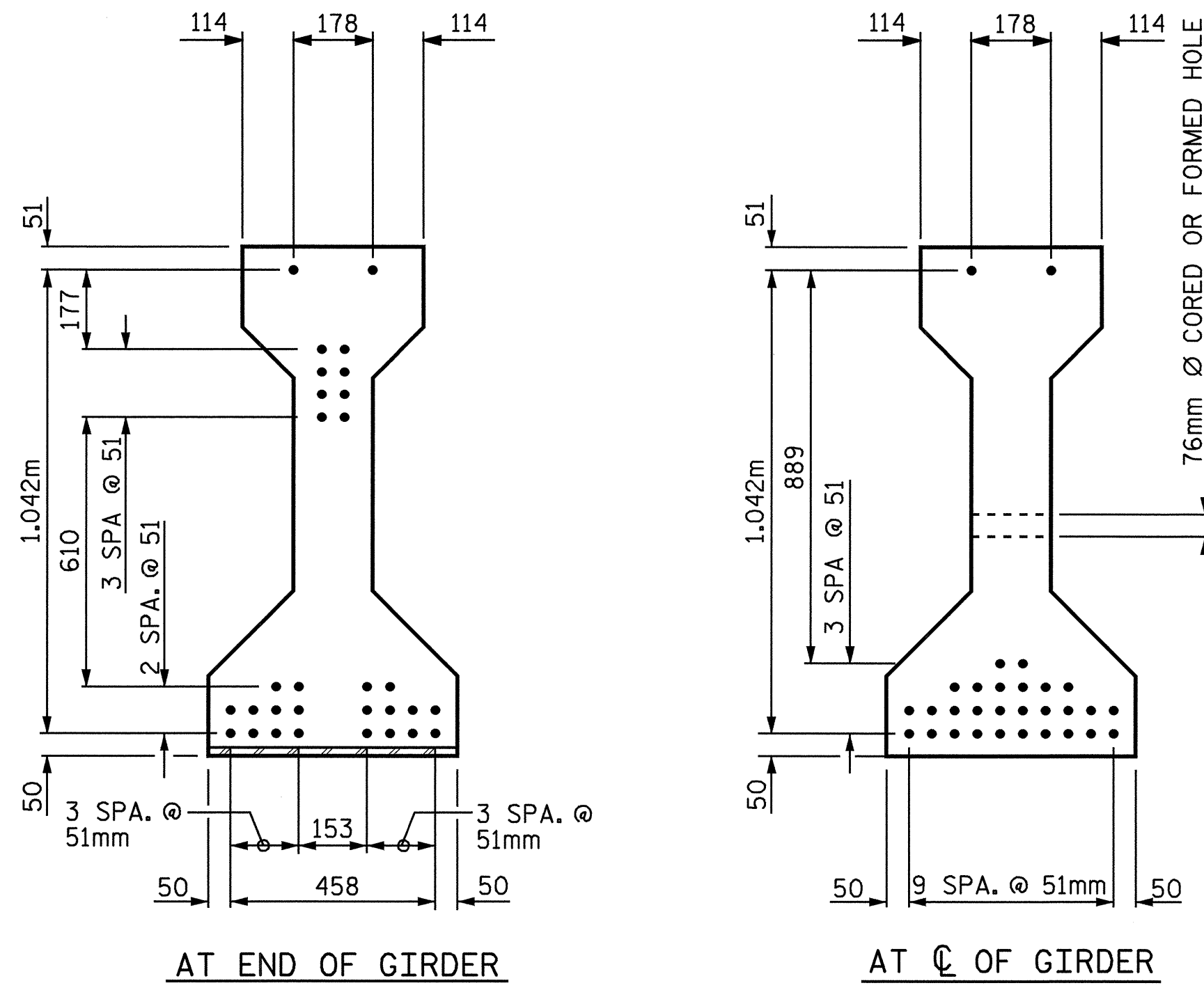


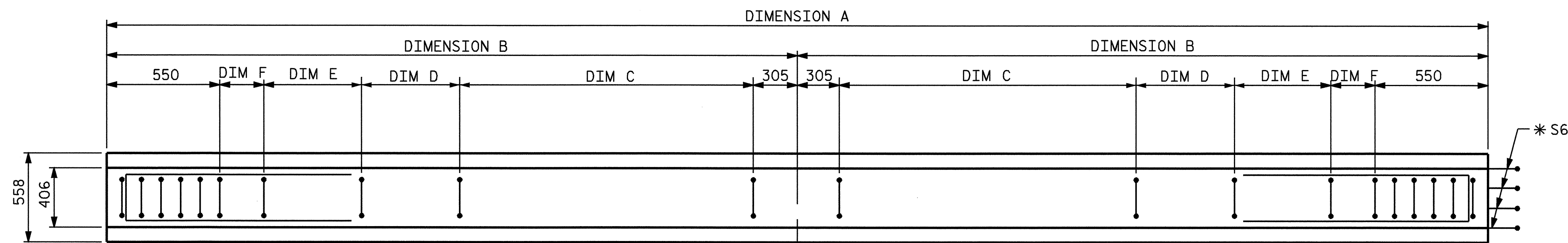
SECTION A-A



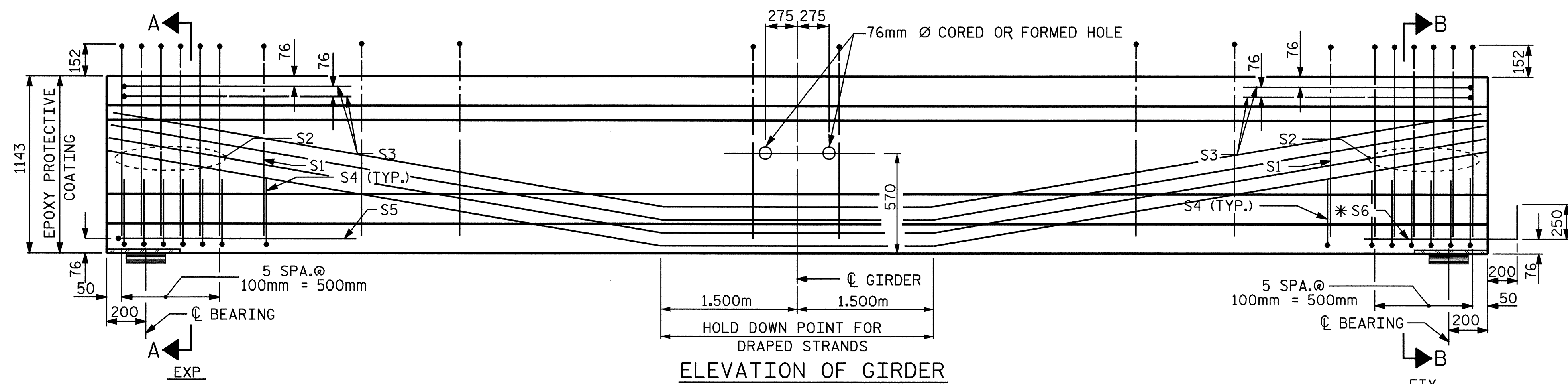
SECTION B-B



12.70mm Ø LOW RELAXATION STRAND LAYOUT



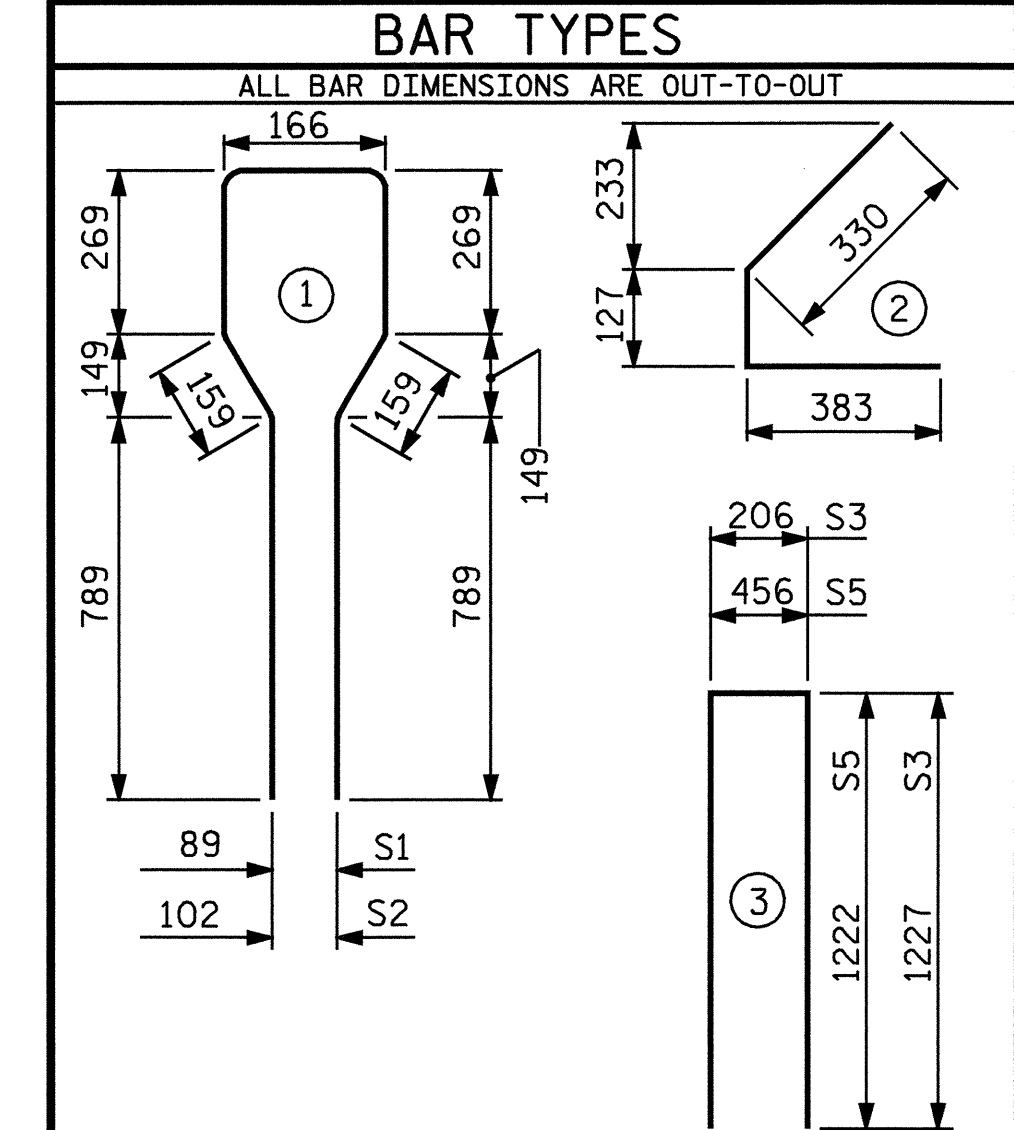
PLAN OF GIRDER



ELEVATION OF GIRDER

GIRDER DIMENSIONS						
SPAN A						
	DIMENSION A	DIMENSION B	DIMENSION C	DIMENSION D	DIMENSION E	DIMENSION F
GIRDER 1	20.976 m	10.488 m	15 SPA.@ 500	9 SPA.@ 200	133	2 SPA.@ 100
GIRDER 2	21.080 m	10.540 m	15 SPA.@ 500	9 SPA.@ 200	85	3 SPA.@ 100
GIRDER 3	21.186 m	10.593 m	15 SPA.@ 500	9 SPA.@ 200	138	3 SPA.@ 100
GIRDER 4	21.292 m	10.646 m	15 SPA.@ 500	10 SPA.@ 200	91	2 SPA.@ 100
GIRDER 5	21.396 m	10.698 m	15 SPA.@ 500	10 SPA.@ 200	143	2 SPA.@ 100
GIRDER 6	21.502 m	10.751 m	15 SPA.@ 500	10 SPA.@ 200	96	3 SPA.@ 100

12.70mm Ø L. R. GRADE 270 STRANDS						
AREA (mm ²)	ULTIMATE STRENGTH (KN PER STRAND)	APPLIED PRESTRESS (KN PER STRAND)				
98.71	183.7	137.8				
REINFORCING STEEL FOR ONE GDR.						
BAR	NUMBER	SIZE	TYPE	LENGTH	WEIGHT	
GDR. A1	S1	S2	#13	1	2600	134
GDR. A2	S1	S4	#13	1	2600	140
GDR. A3	S1	S4	#13	1	2600	140
GDR. A4	S1	S4	#13	1	2600	140
GDR. A5	S1	S4	#13	1	2600	140
GDR. A6	S1	S6	#13	1	2600	145
	S2	S2	#19	1	2600	70
	S3	S3	#13	3	2660	11
	S4	S4	#13	2	840	50
	S5	S5	#13	3	2900	3
	*S6	S6	#16	STR	1120	7

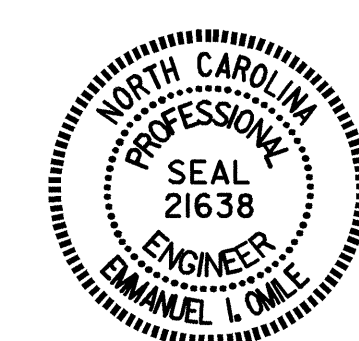


QUANTITIES FOR ONE GIRDER			
	REINFORCING STEEL (kg)	41.4 MPa CONCRETE (m ³)	12.70mm Ø L.R. STRANDS (No.)
GIRDER A1	275	7.572	30
GIRDER A2	281	7.610	30
GIRDER A3	281	7.648	30
GIRDER A4	281	7.686	30
GIRDER A5	281	7.724	30
GIRDER A6	286	7.762	30

GIRDERS REQUIRED		
NUMBER	LENGTH	TOTAL LENGTH
6	VARIES	127.432

PROJECT NO. R-2562C
 BLADEN COUNTY
 STATION: 178+79.500 -L- REV

SHEET 1 OF 4



STATE OF NORTH CAROLINA
 DEPARTMENT OF TRANSPORTATION
 RALEIGH
 STANDARD
 AASHTO TYPE III
 PRESTRESSED CONCRETE
 GIRDER CONTINUOUS
 FOR LIVE LOAD
 (SPAN A) (RIGHT LANE)

REVISIONS						SHEET NO.
NO.	BY:	DATE:	NO.	BY:	DATE:	S-44
1			3			TOTAL SHEETS
2			4			68

ASSEMBLED BY : J. G. KHARVA	DATE : 06-08-04
CHECKED BY : E. I. OMILE	DATE : 08-24-04
DRAWN BY : ELR 8/91	REV. 5/16/97 EEM/RGW
CHECKED BY : GRP 8/91	REV. 7/17/98 RWW/LES
	REV. 10/17/00 RWW/LES