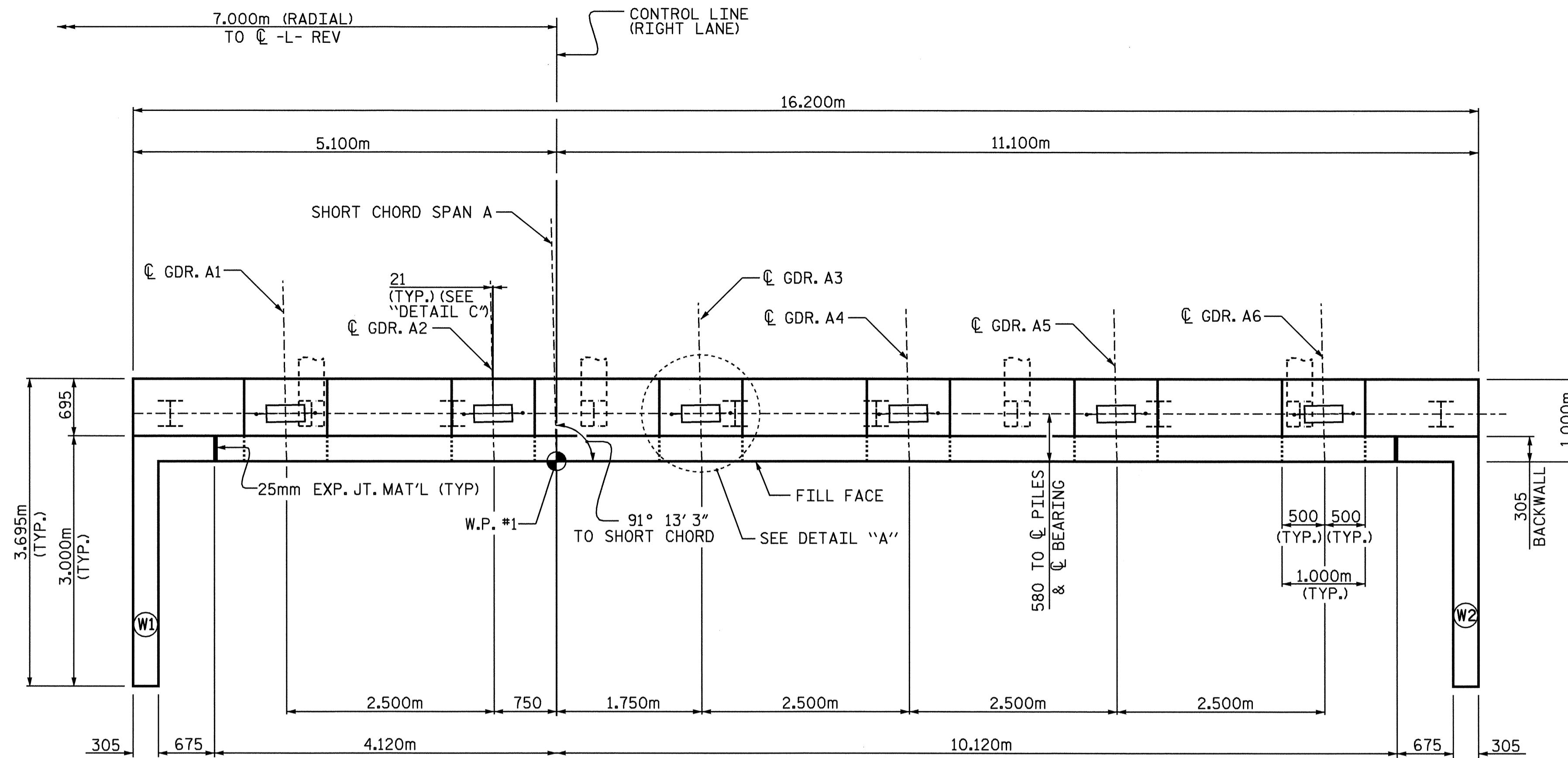
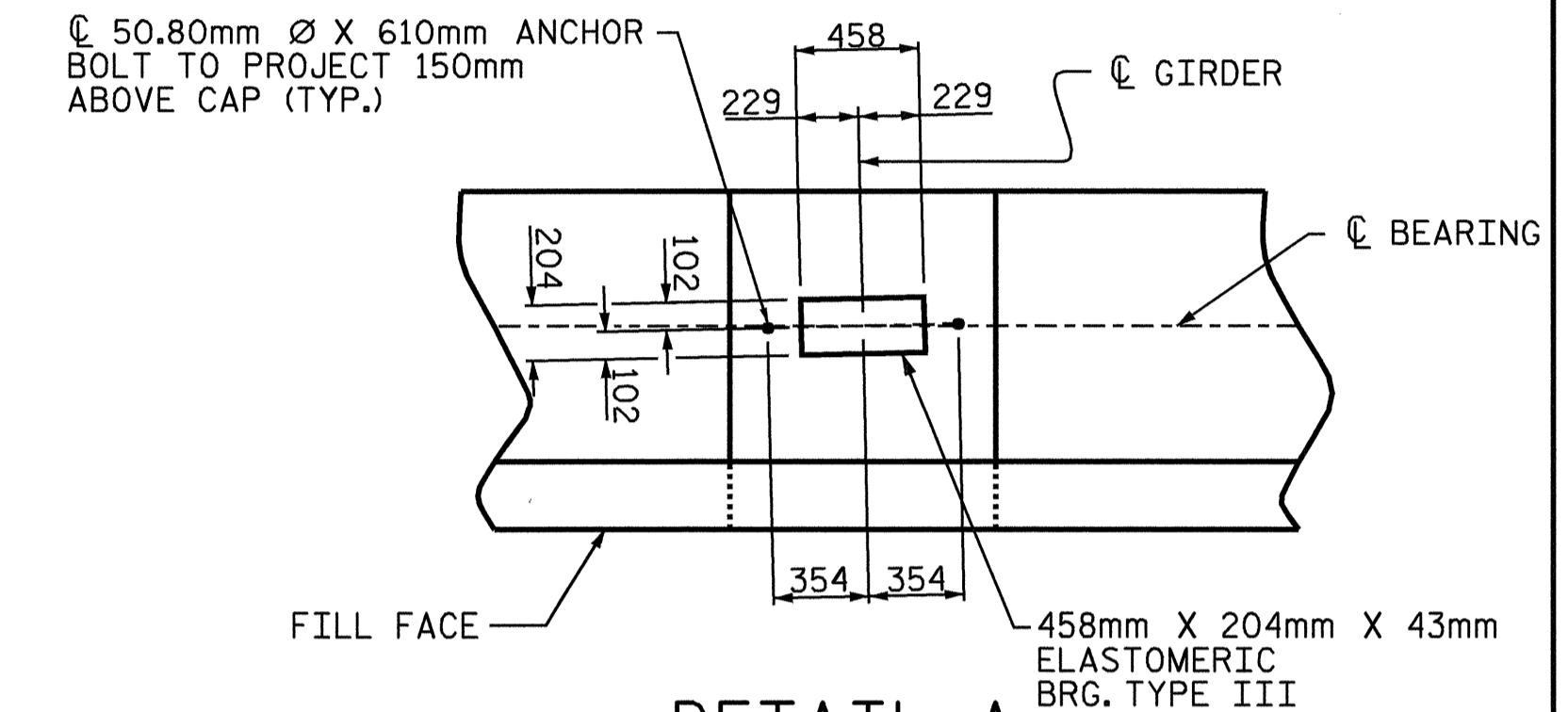


**NOTES**

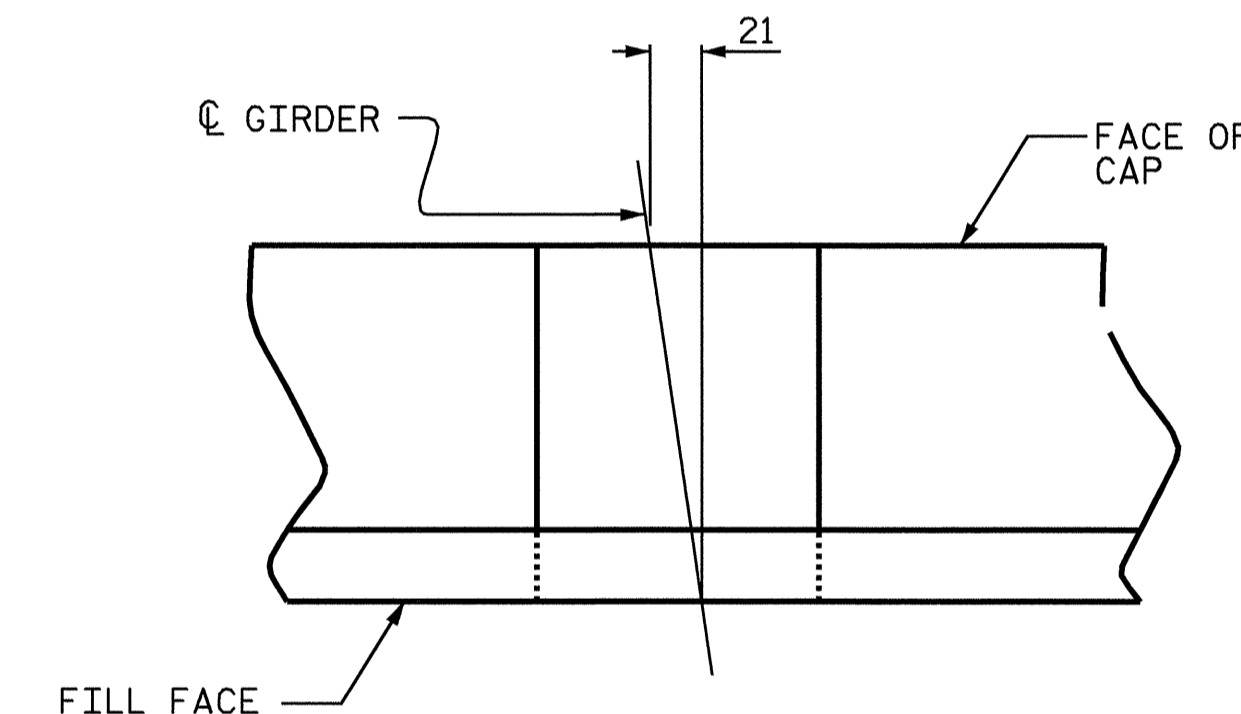
STIRRUPS BARS IN CAP MAY BE SHIFTED AS NECESSARY TO CLEAR ANCHOR BOLTS.  
 FOR EPOXY PROTECTIVE COATING, SEE SPECIAL PROVISIONS.  
 BACKWALL SHALL BE PLACED BEFORE APPLYING THE EPOXY PROTECTIVE COATING.  
 THE TOP SURFACE AREAS OF THE END BENT CAPS SHALL BE CURED IN ACCORDANCE WITH THE STANDARD SPECIFICATIONS EXCEPT THAT THE MEMBRANE CURING COMPOUND METHOD SHALL NOT BE USED.  
 \* THE TOP SURFACE OF THE CAP EXCEPT THE BRIDGE SEAT BUILDUPS SHALL BE SLOPED TRANSVERSELY FROM THE FILL FACE TO THE BACK FACE AT THE RATE OF 2%.  
 THE CONTRACTOR SHALL PROVIDE FOR INSTALLATION OF THE 100mm DIAMETER DRAIN PIPE THROUGH THE WING WALL AS REQUIRED FOR REINFORCED BRIDGE APPROACH FILLS, SEE THE ROADWAY PLANS. REINFORCING STEEL IN THE WING WALL MAY BE SHIFTED AS NECESSARY TO CLEAR THE DRAIN PIPE.



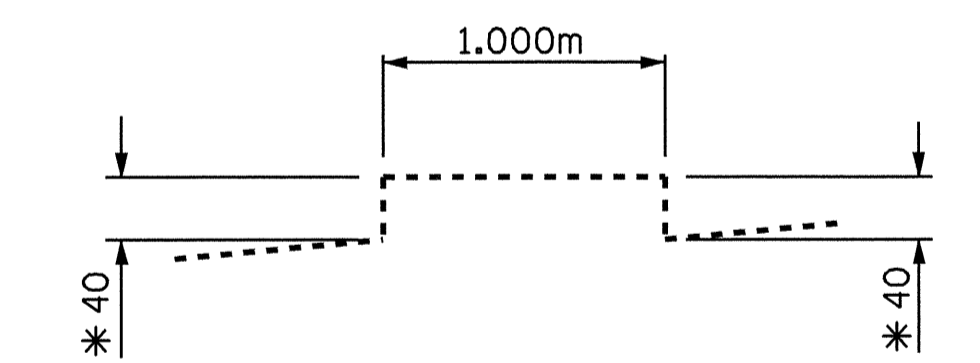
**PLAN**



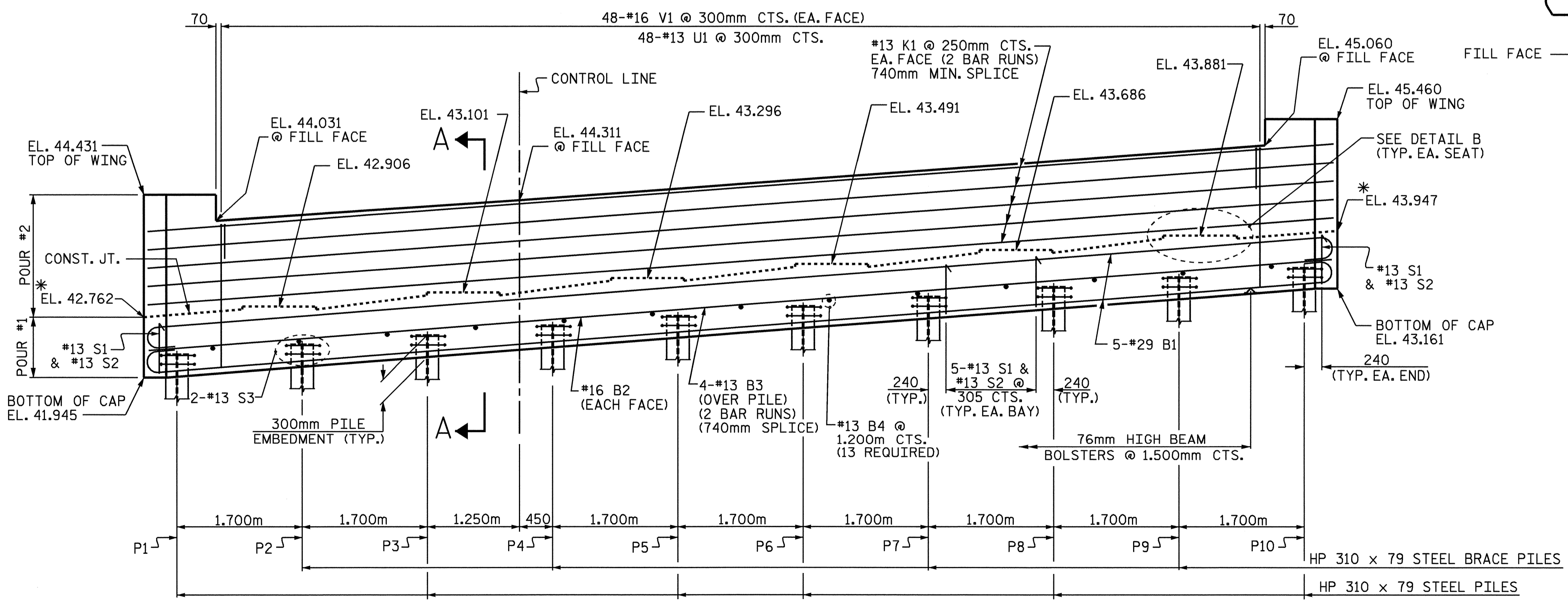
**DETAIL A**  
(TYP. EA. SEAT)



**DETAIL C**  
(TYP. EA. SEAT)



**DETAIL B**  
(TYP. EA. SEAT)

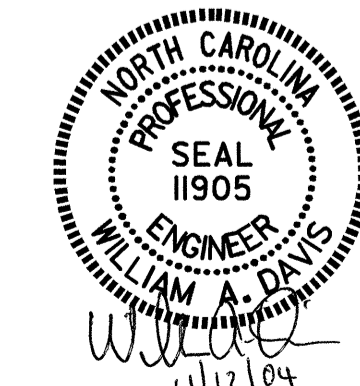


**ELEVATION**

PILE	TOP OF PILE ELEVATIONS
P1	42.256
P2	42.389
P3	42.521
P4	42.654
P5	42.786
P6	42.919
P7	43.052
P8	43.184
P9	43.317
P10	43.449

PROJECT NO. R-2562C  
BLADEN COUNTY  
 STATION: 178+79.500 -L- REV

SHEET 1 OF 3



STATE OF NORTH CAROLINA  
 DEPARTMENT OF TRANSPORTATION  
 RALEIGH  
**SUBSTRUCTURE  
 END BENT #1  
 (RIGHT LANE)**

REVISIONS						SHEET NO.	
NO.	BY:	DATE:	NO.	BY:	DATE:	S-52	
1			3			TOTAL SHEETS	68
2			4				

DRAWN BY: J. G. KHARVA DATE: 7/07/04  
 CHECKED BY: J. D. HAWK DATE: 8/23/04