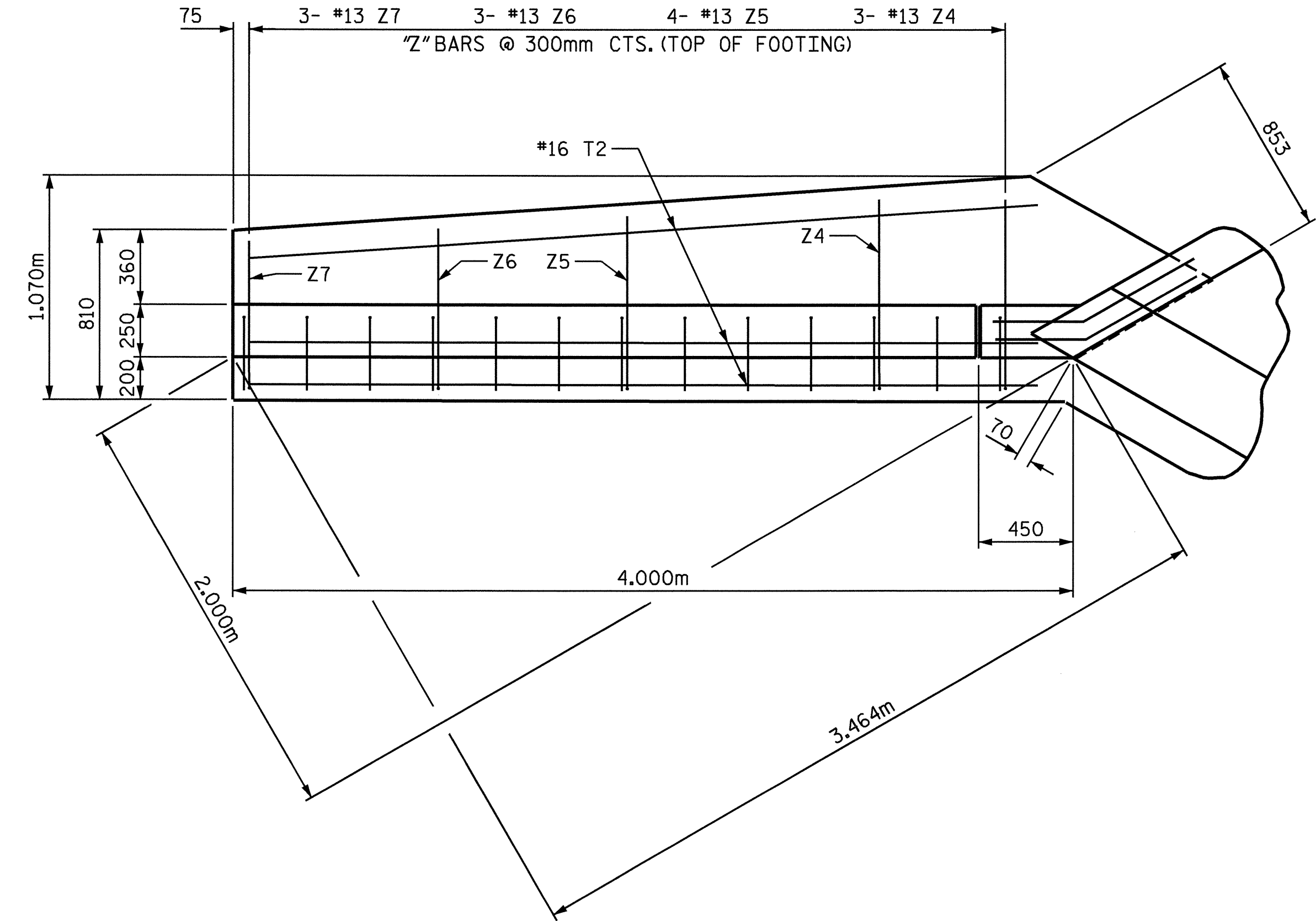
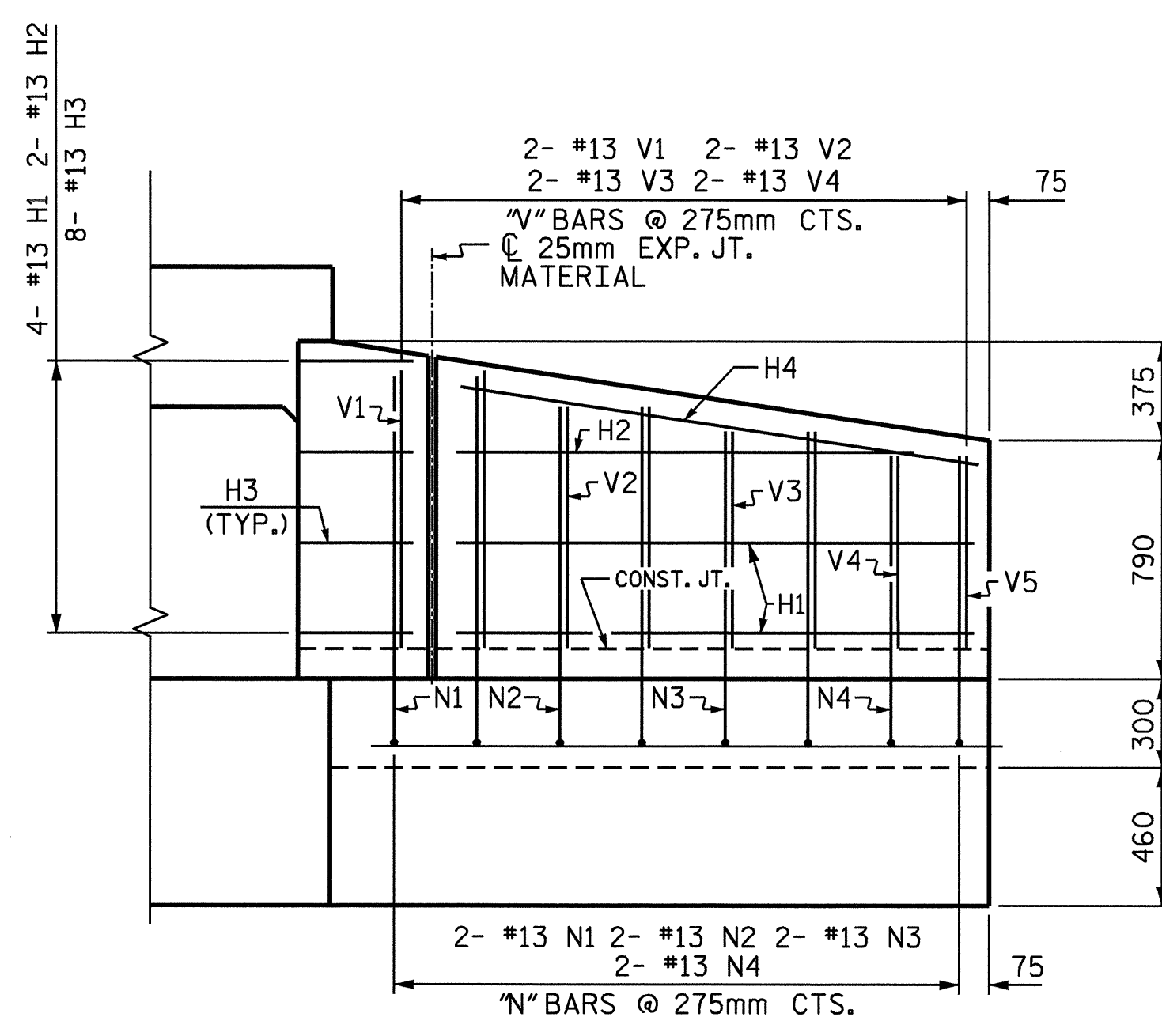


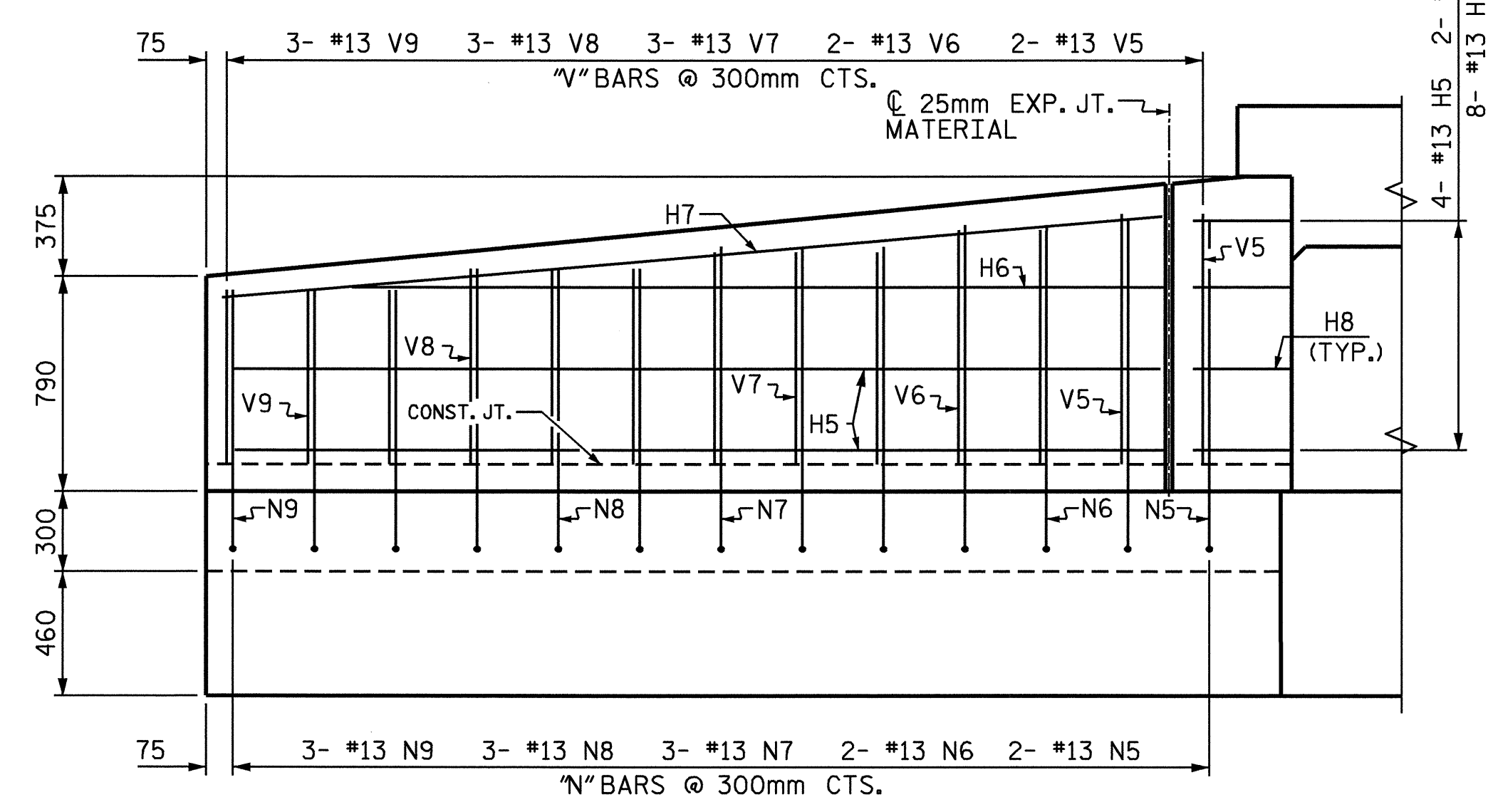
PLAN W2



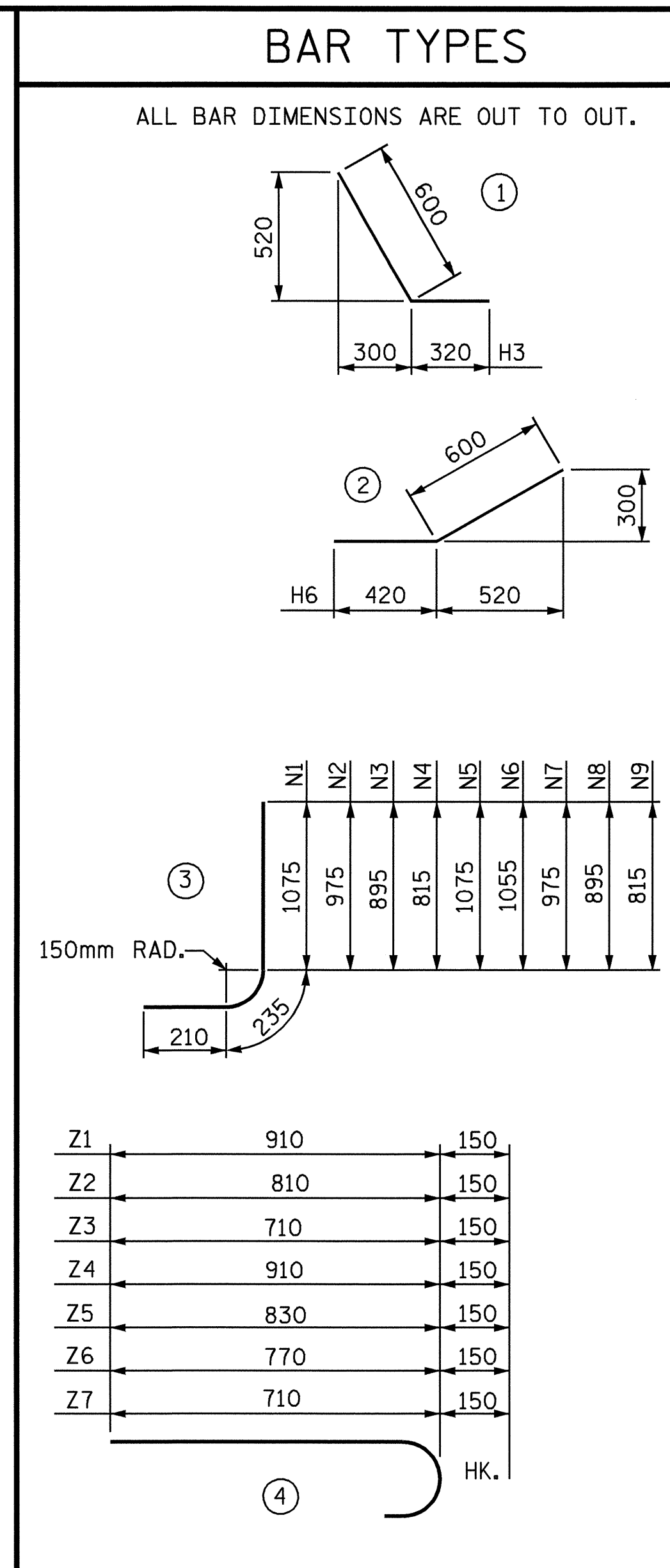
PLAN W1



ELEVATION W2

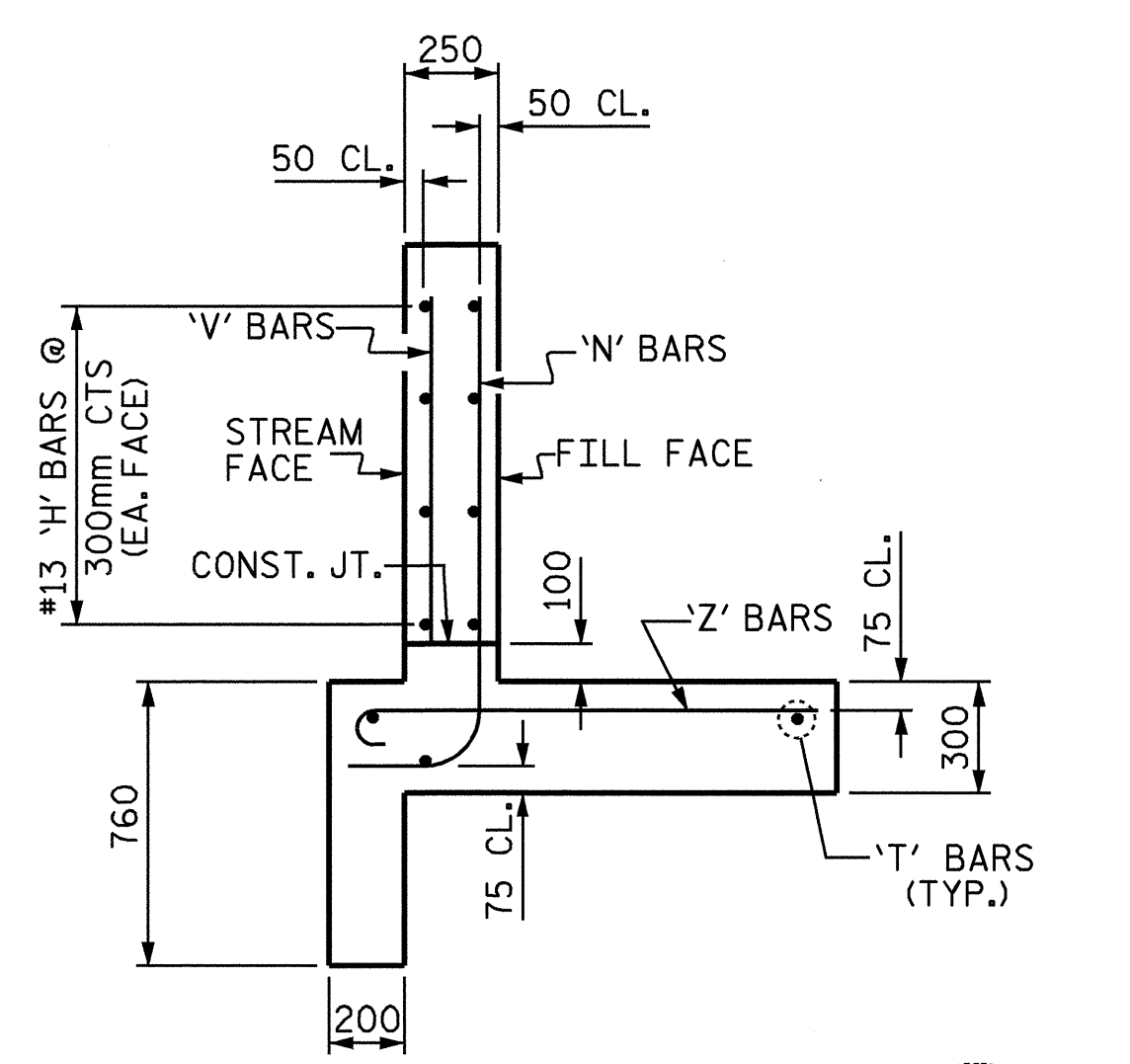


ELEVATION W1

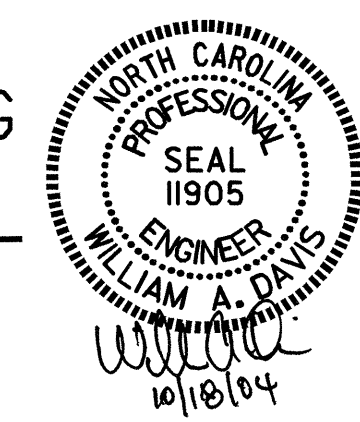


Z1	910	150
Z2	810	150
Z3	710	150
Z4	910	150
Z5	830	150
Z6	770	150
Z7	710	150

BILL OF MATERIAL					
BAR NO	NO	SIZE	TYPE	LENGTH	WEIGHT
H1	4	13	STR	1720	7
H2	2	13	STR	1520	3
H3	8	13	STR	980	8
H4	2	13	STR	1740	3
H5	4	13	STR	3420	14
H6	2	13	STR	3100	6
H7	2	13	STR	3480	7
H8	8	13	STR	980	8
N1	2	13	3	1520	3
N2	2	13	3	1420	3
N3	2	13	3	1340	3
N4	2	13	3	1260	3
N5	2	13	3	1520	3
N6	2	13	3	1600	3
N7	3	13	3	1420	4
N8	3	13	3	1340	4
N9	3	13	3	1260	4
T1	3	16	STR	2180	10
T2	3	16	STR	3760	18
V1	2	13	STR	920	2
V2	2	13	STR	900	2
V3	2	13	STR	720	1
V4	2	13	STR	640	1
V5	2	13	STR	920	2
V6	2	13	STR	860	2
V7	3	13	STR	780	2
V8	3	14	STR	780	2
V9	3	16	STR	640	3
Z1	2	13	4	1060	2
Z2	3	13	4	960	3
Z3	3	13	4	860	3
Z4	3	13	4	1060	3
Z5	4	13	4	980	4
Z6	3	13	4	920	3
Z7	3	13	4	860	3
REINFORCING STEEL				kg	152
FOR 2 WING WALLS					
CLASS A CONCRETE					
2 WINGS				4.0	m ³
1 HEADWALLS				0.4	m ³
1 END CURTAIN WALLS				0.4	m ³
TOTAL				4.8	m ³



TYPICAL WING SECTION



PROJECT NO. R-2562C
BLANDEN COUNTY
STATION: 155+04.780 -L- REV.

SHEET 5 OF 8
STATE OF NORTH CAROLINA
DEPARTMENT OF TRANSPORTATION
RALEIGH
WINGS FOR
CONCRETE BOX CULVERT
H=0.900m SLOPE = 3:1
120° SKEW HEADWALL
LEFT EXTENSION

ASSEMBLED BY: Neil M. Ruffin DATE: 8/3/04
CHECKED BY: J. D. HAWK DATE: 8/27/04
DRAWN BY:
CHECKED BY:

FOR WING ORIENTATION, SEE BARREL STANDARD SHEET.

REVISIONS						SHEET NO.
NO.	BY:	DATE:	NO.	BY:	DATE:	C-9
1			3			TOTAL SHEETS
2			4			12