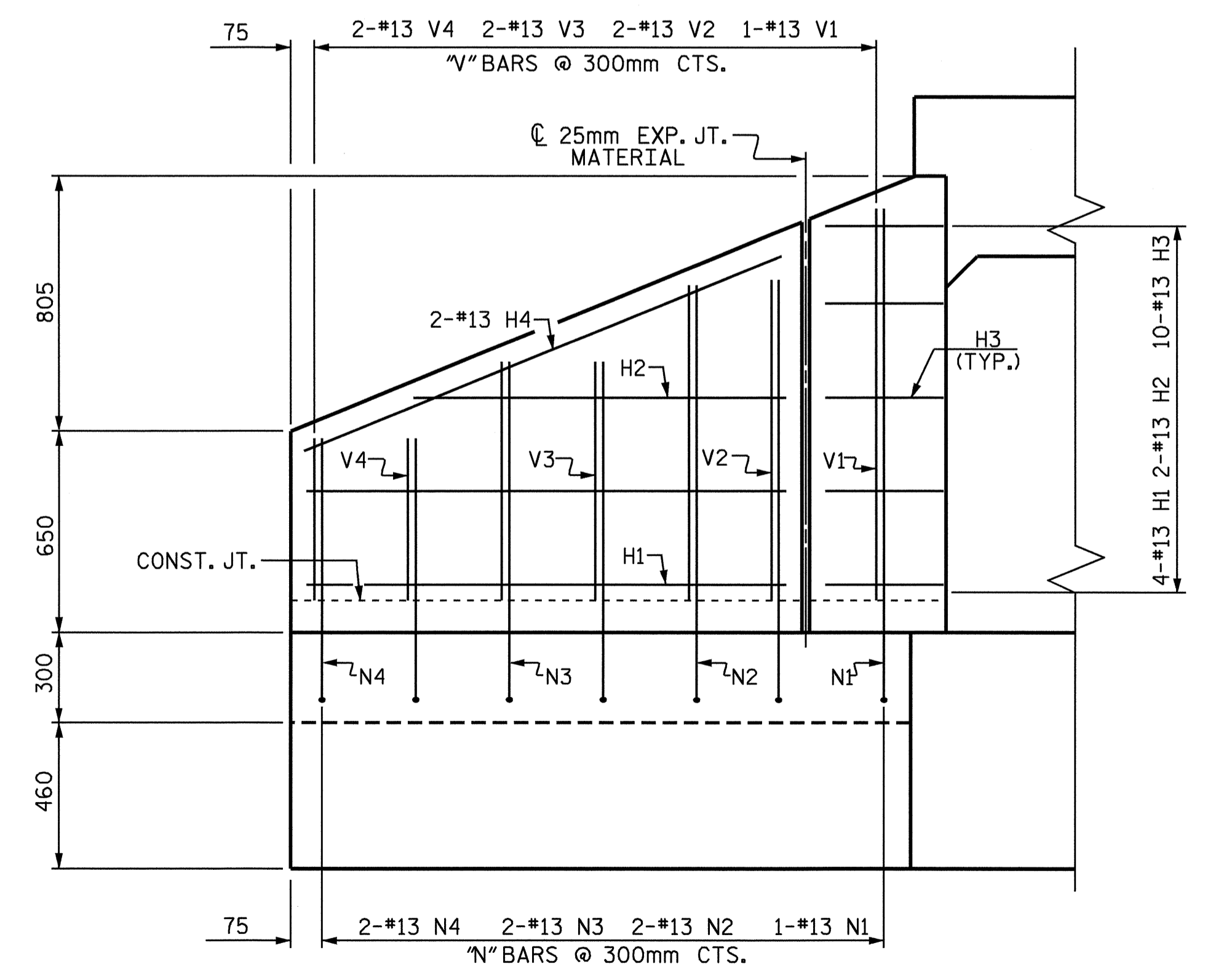
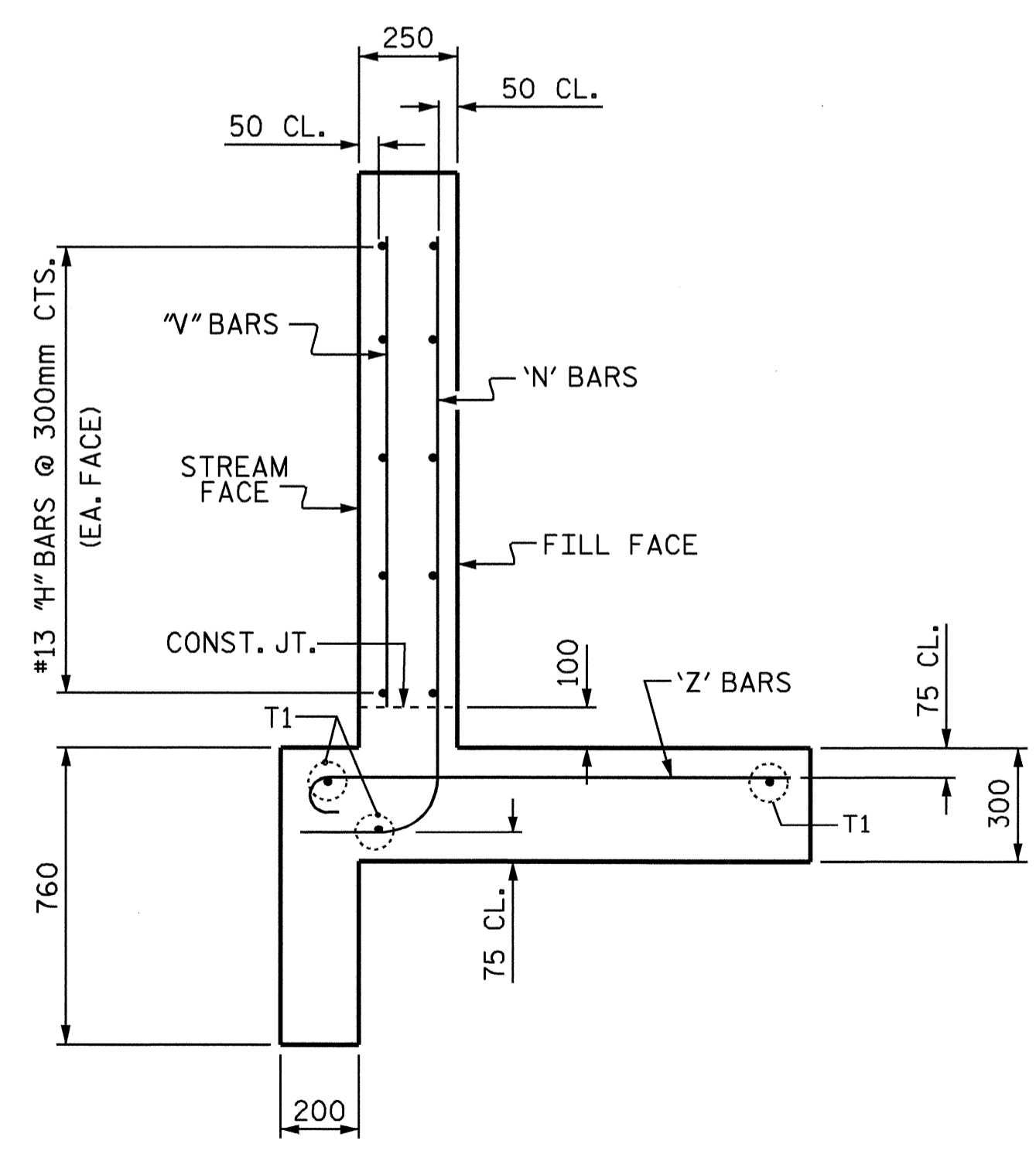


PLAN



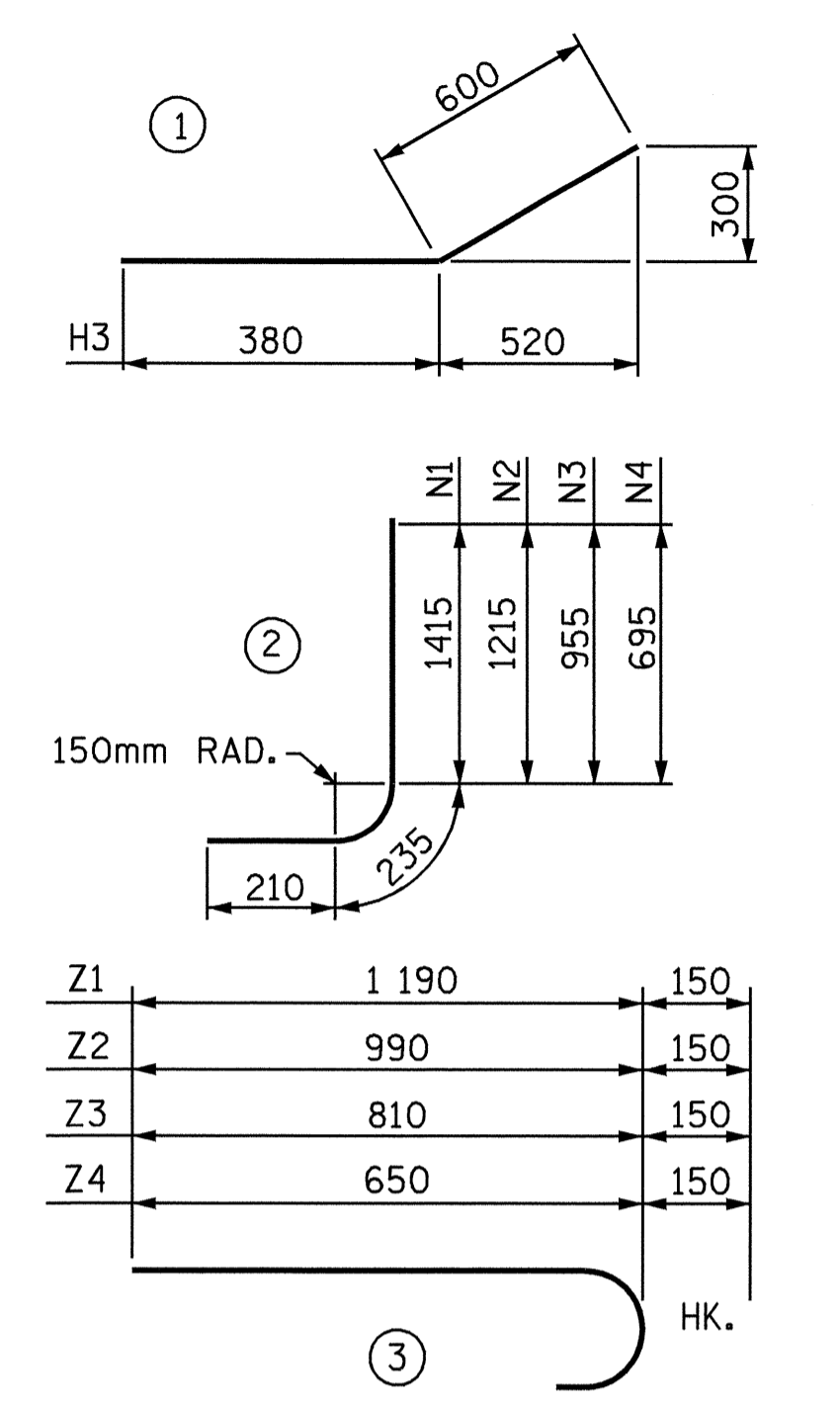
ELEVATION



TYPICAL WING SECTION

BAR TYPES

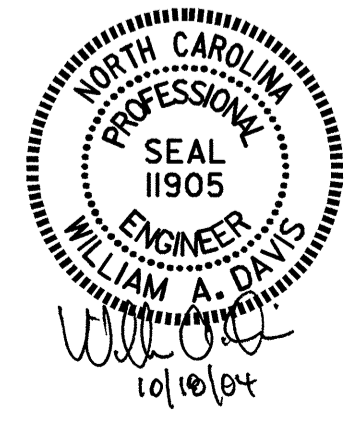
ALL BAR DIMENSIONS ARE OUT TO OUT.



BILL OF MATERIAL

BAR	NO	SIZE	TYPE	LENGTH	WEIGHT	
H1	8	13	STR	1540	12	
H2	4	13	STR	1220	5	
H3	20	13	1	980	19	
H4	4	13	STR	1660	7	
N1	2	13	2	1860	4	
N2	4	13	2	1660	7	
N3	4	13	2	1400	6	
N4	4	13	2	1140	5	
T1	6	16	STR	2100	20	
V1	2	13	STR	1240	2	
V2	4	13	STR	1040	4	
V3	4	13	STR	780	3	
V4	4	13	STR	520	2	
Z1	2	13	3	1340	3	
Z2	4	13	3	1140	5	
Z3	4	13	3	960	4	
Z4	4	13	3	800	3	
REINFORCING STEEL					kg	111
FOR 2 WING WALLS						
CLASS A CONCRETE:						
2 WINGS					2.9	m ³
1 HEADWALLS					0.3	m ³
1 END CURTAIN WALLS					0.3	m ³
TOTAL					3.5	m ³

ASSEMBLED BY : *Neil M. Ruffin* DATE : 8/3/04
 CHECKED BY : J. D. HAWK DATE : 8/27/04
 DRAWN BY : FPP 06/97
 CHECKED BY : VAP 06/97



PROJECT NO. R-2562C
BLADEN COUNTY
 STATION: 155+04.780 -LREV.-
 SHEET 8 OF 8

STATE OF NORTH CAROLINA
 DEPARTMENT OF TRANSPORTATION
 RALEIGH
**STANDARD WINGS
 FOR
 CONCRETE BOX CULVERT**
 H = 1.200m SLOPE = 2 : 1
 90° SKEW HEADWALL
 (RIGHT EXTENSION)

REVISIONS						SHEET NO.
NO.	BY:	DATE:	NO.	BY:	DATE:	C-12
1			3			TOTAL SHEETS
2			4			12