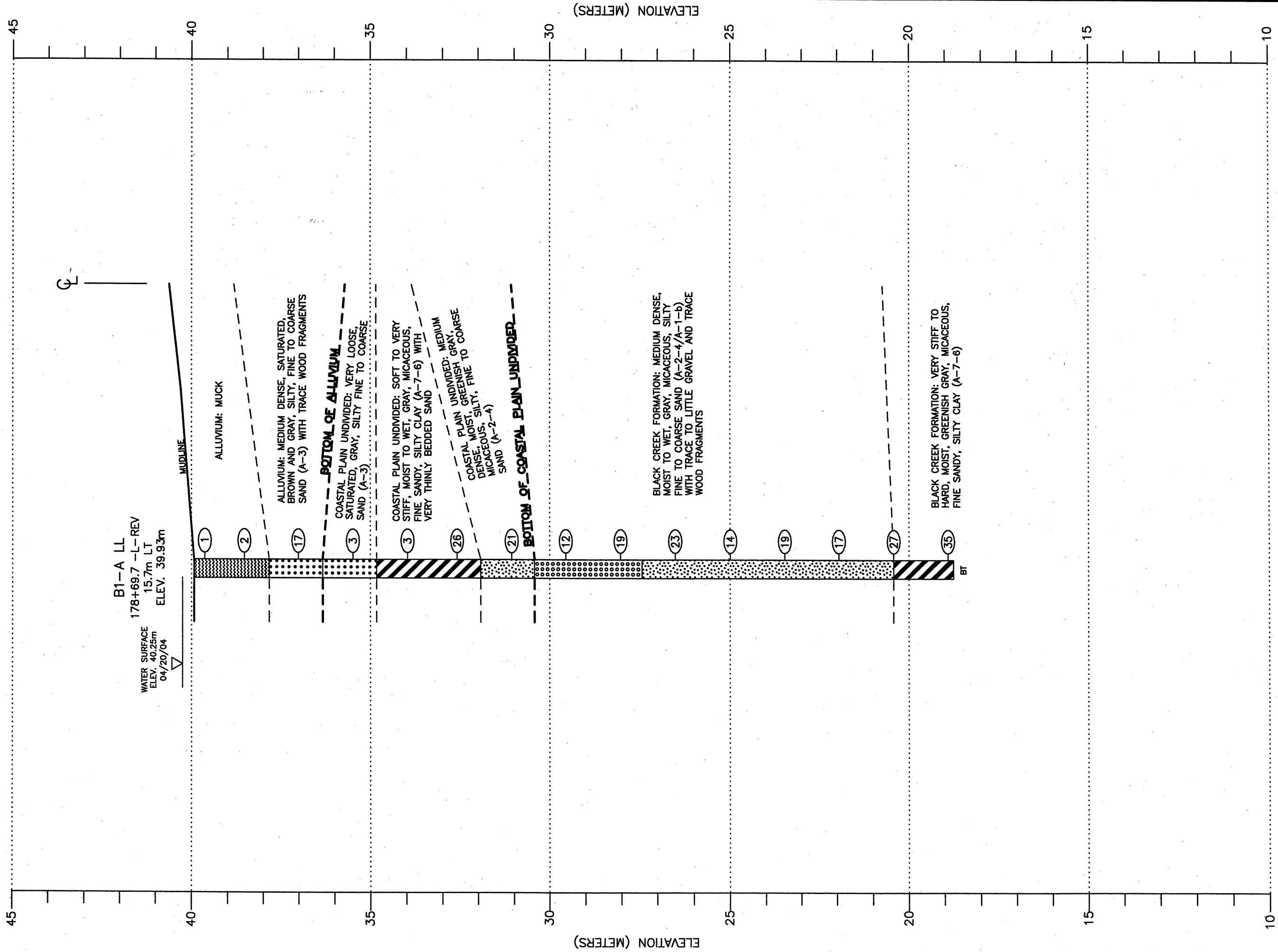




CROSS SECTION THROUGH BENT 1 LEFT LANE  
 DUAL BRIDGES ON NC 87 OVER REEDY MEADOW SWAMP  
 NCDOT PROJECT NO. 34467.1.1 (R-2562C)  
 F.A. No. N/A  
 BLADEN COUNTY, NORTH CAROLINA

MACTEC ENGINEERING AND CONSULTING, INC.  
 RALEIGH, NORTH CAROLINA

REVISIONS	DRAWN:	R.R.	DATE:
06/16/04	DFT CHECK:	W.B.D.	JOB: 6488-04-0650
	ENG CHECK:	S.J.C.	DWG: 6



ELEVATION (METERS)

ELEVATION (METERS)