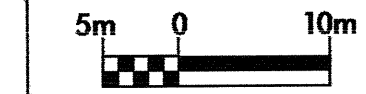


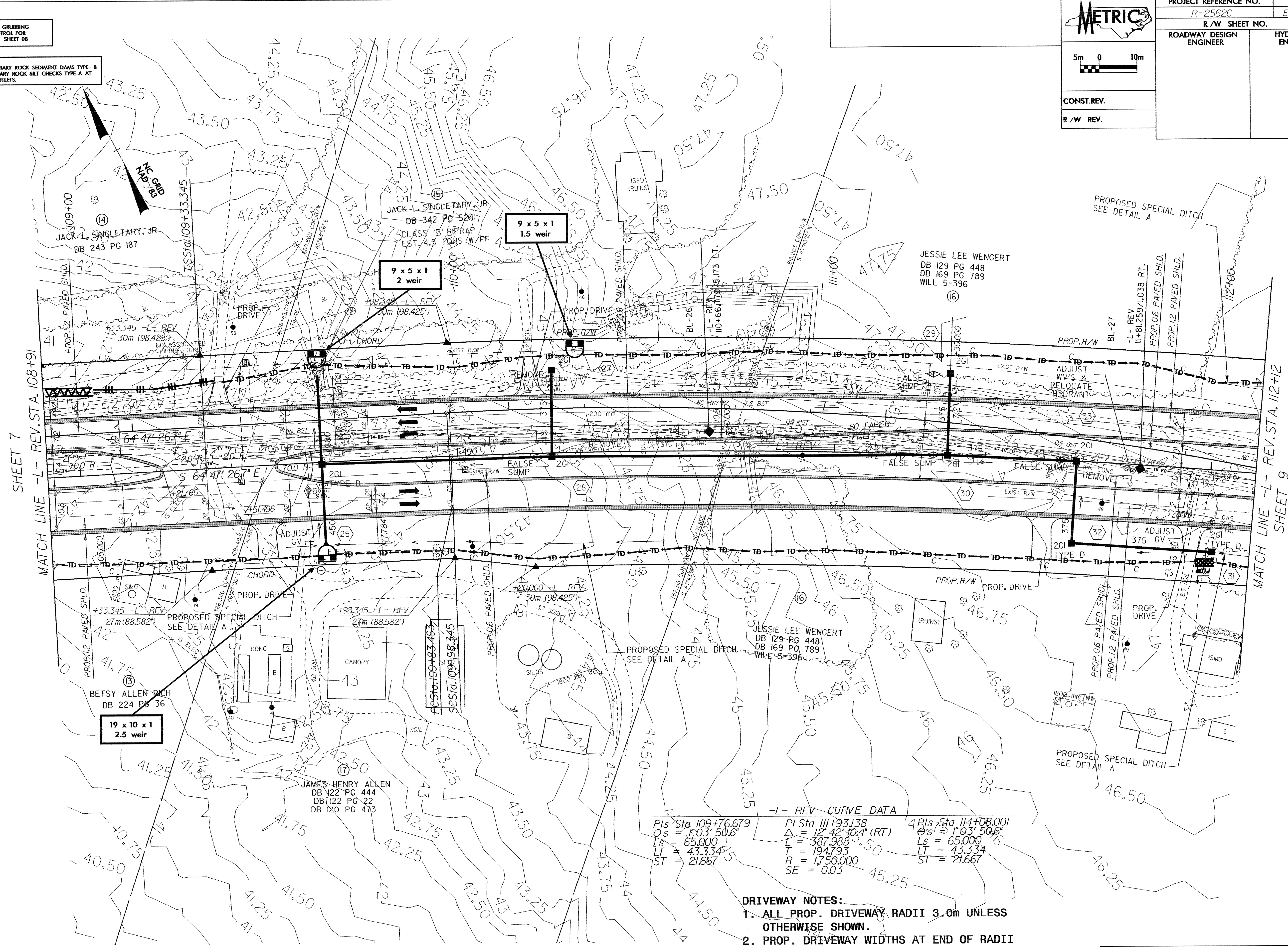
| | |
|----------------------------------|---------------------------|
| PROJECT REFERENCE NO. R-2562C | SHEET NO. EC-7/CONST.8 |
| R/W SHEET NO. | |
| ROADWAY DESIGN ENGINEER | HYDRAULICS ENGINEER |



CONST.REV.
R/W REV.

CLEARING AND GRUBBING
EROSION CONTROL FOR
CONSTRUCTION SHEET 08

NOTE:
PLACE TEMPORARY ROCK SEDIMENT DAMS TYPE-B
AND TEMPORARY ROCK SILT CHECKS TYPE-A AT
DRAINAGE OUTLETS.



SHEET 7
MATCH LINE -L- REV. STA. 108+91

MATCH LINE -L- REV. STA. 112+12
SHEET 9

-L- REV CURVE DATA

| | | |
|--------------------|------------------------|---------------------|
| PIs Sta 109+76.679 | PI Sta 111+93.138 | 4PIs Sta 114+08.001 |
| Os = 103° 50.6' | Δ = 12° 42' 10.4" (RT) | Os = 103° 50.6' |
| Ls = 65.000 | L = 387.988 | Ls = 65.000 |
| LT = 43.334 | T = 194.793 | LT = 43.334 |
| ST = 21.667 | R = 1,750.000 | ST = 21.667 |
| | SE = 0.03 | |

- DRIVEWAY NOTES:**
1. ALL PROP. DRIVEWAY RADII 3.0m UNLESS OTHERWISE SHOWN.
 2. PROP. DRIVEWAY WIDTHS AT END OF RADII SHALL BE 4.9m MIN. UNLESS OTHERWISE SHOWN. TAPER DRIVEWAY TO EXISTING DRIVEWAY WIDTH.

SEE SHEET 34 FOR -L- REV. PROFILE

08/25/09
08 OCT 2009 10:54 AM
C:\RE\1\2562C\Roadway\proj\2562c_s08.dwg
Jagadevan