
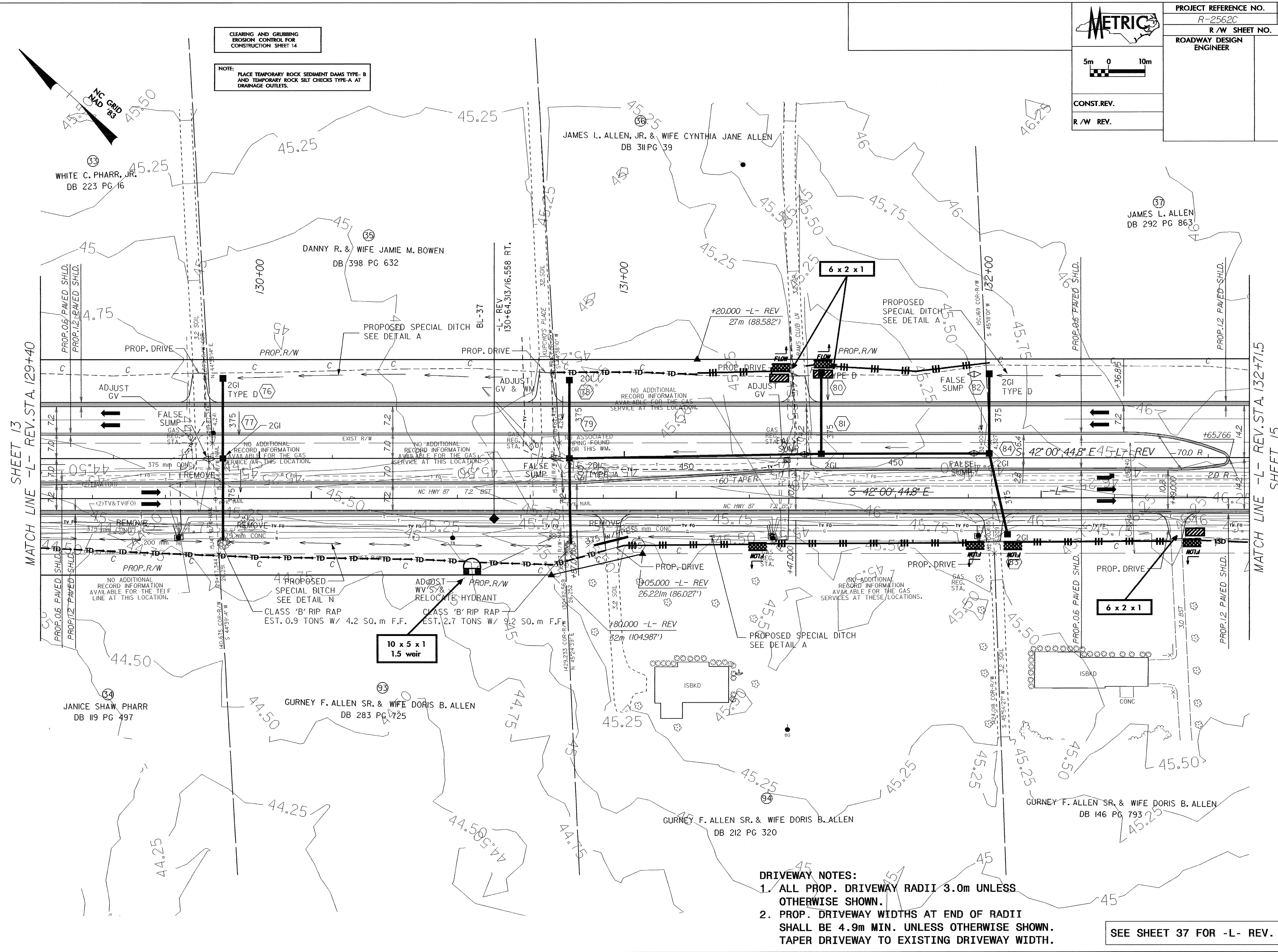


08/25/09  
 d:\REU\1\28-OCT-2009\1487-Roadway\proj\2562c-a14.psh  
 j.pocanin

 5m 0 10m CONST. REV. R/W REV.	PROJECT REFERENCE NO. R-2562C	SHEET NO. EC-14/CONST.14
	R/W SHEET NO.	
ROADWAY DESIGN ENGINEER	HYDRAULICS ENGINEER	



**CLEARING AND GRUBBING EROSION CONTROL FOR CONSTRUCTION SHEET 14**

**NOTE:**  
PLACE TEMPORARY ROCK SEDIMENT DAMS TYPE-B AND TEMPORARY ROCK SILT CHECKS TYPE-A AT DRAINAGE OUTLETS.

SHEET 13  
 MATCH LINE -L- REV. STA. 129+40

MATCH LINE -L- REV. STA. 132+71.5  
 SHEET 15

**10 x 5 x 1  
1.5 weir**

**6 x 2 x 1**

**6 x 2 x 1**

- DRIVEWAY NOTES:**
- ALL PROP. DRIVEWAY RADII 3.0m UNLESS OTHERWISE SHOWN.
  - PROP. DRIVEWAY WIDTHS AT END OF RADII SHALL BE 4.9m MIN. UNLESS OTHERWISE SHOWN. TAPER DRIVEWAY TO EXISTING DRIVEWAY WIDTH.

**SEE SHEET 37 FOR -L- REV. PROFILE**