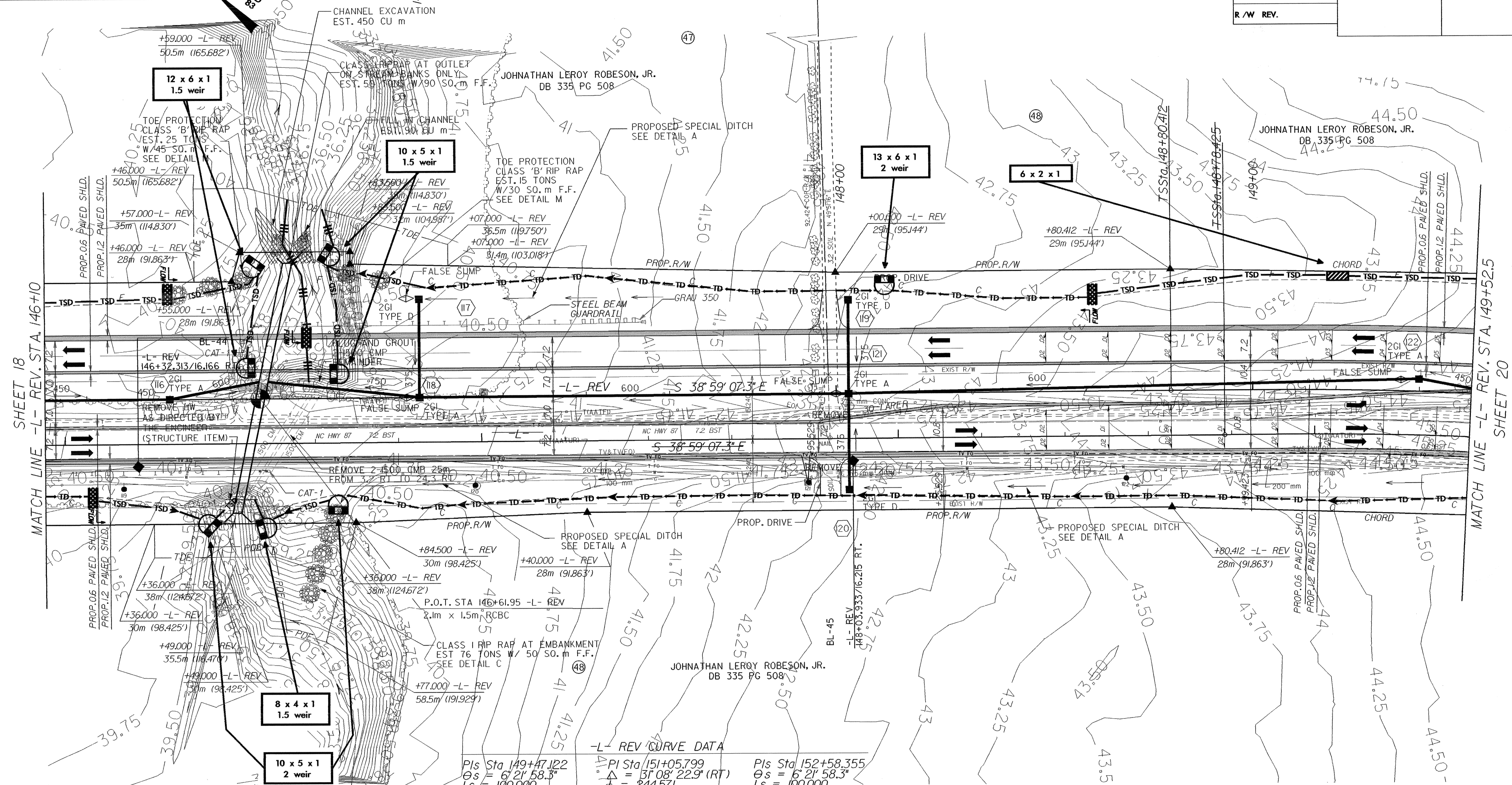


CLEARING AND GRUBBING EROSION CONTROL FOR CONSTRUCTION SHEET 19

NOTE: PLACE TEMPORARY ROCK SEDIMENT DAMS TYPE-B AND TEMPORARY ROCK SILT CHECKS TYPE-A AT DRAINAGE OUTLETS.



-L- REV CURVE DATA

| | | |
|-------------------------------|-------------------------------------|-------------------------------|
| PIs Sta 149+47.122 | PI Sta 151+05.799 | PIs Sta 152+58.355 |
| $\Delta = 6^\circ 21' 58.3''$ | $\Delta = 31^\circ 08' 22.9''$ (RT) | $\Delta = 6^\circ 21' 58.3''$ |
| $L_s = 100.000$ | $L = 244.571$ | $L_s = 100.000$ |
| $LT = 66.710$ | $T = 125.387$ | $LT = 66.710$ |
| $ST = 33.373$ | $R = 450.000$ | $ST = 33.373$ |
| | $SE = 0.078$ | |

-L- CURVE DATA

| | | |
|-------------------------------|-------------------------------------|-------------------------------|
| PIs Sta 149+25.106 | PI Sta 150+88.132 | PIs Sta 152+42.514 |
| $\Delta = 4^\circ 30' 23.1''$ | $\Delta = 34^\circ 51' 33.3''$ (RT) | $\Delta = 4^\circ 30' 23.1''$ |
| $L_s = 70.000$ | $L = 270.742$ | $L_s = 70.000$ |
| $LT = 46.682$ | $T = 139.707$ | $LT = 46.682$ |
| $ST = 23.347$ | $R = 445.000$ | $ST = 23.347$ |

- DRIVEWAY NOTES:
- ALL PROP. DRIVEWAY RADII 3.0m UNLESS OTHERWISE SHOWN.
 - PROP. DRIVEWAY WIDTHS AT END OF RADII SHALL BE 4.9m MIN. UNLESS OTHERWISE SHOWN. TAPER DRIVEWAY TO EXISTING DRIVEWAY WIDTH.

SEE SHEET 39 FOR -L- REV. PROFILE

26-OCT-2004 11:51 Roadway\proj\2562c\19.dwg
 d:\REU\11\p\2562c\19.dwg
 01/25/09