
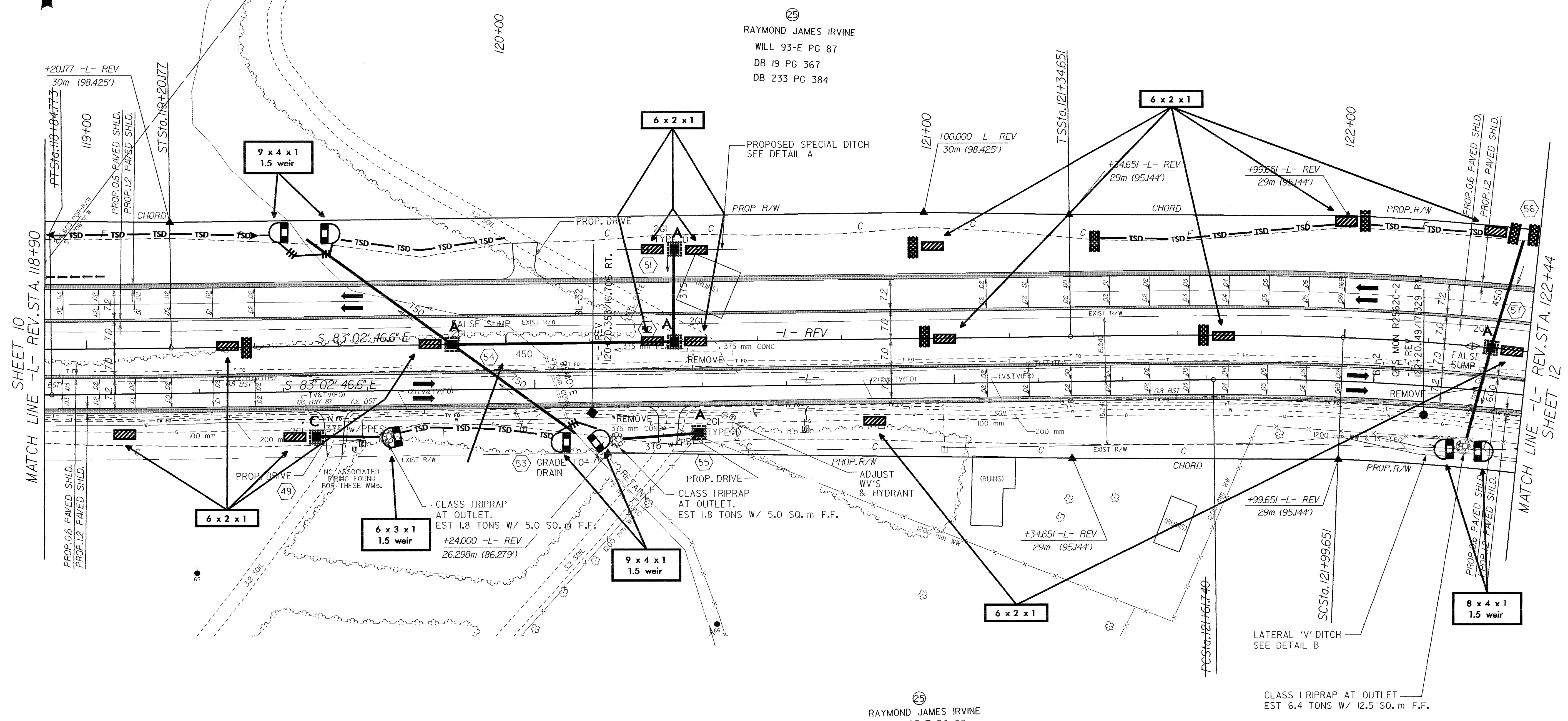


09/25/99

 5m 0 10m CONST. REV. R/W REV.	PROJECT REFERENCE NO. R-2562C	SHEET NO. EC-42/CONST. II
	R/W SHEET NO.	
ROADWAY DESIGN ENGINEER	HYDRAULICS ENGINEER	

-L- REV CURVE DATA

Pls Sta 116+09.785 θs = 3° 43' 27.2" Ls = 65.000 LT = 43.343 ST = 21.675	Pls Sta 117+45.214 Δ = 25° 38' 17.2" (LT) L = 223.735 T = 113.772 R = 500.000 SE = 0.076	Pls Sta 118+76.852 θs = 3° 43' 27.2" Ls = 65.000 LT = 43.343 ST = 21.675
--	---	--



25
RAYMOND JAMES IRVINE
WILL 93-E PG 87
DB 19 PG 367
DB 233 PG 384

25
RAYMOND JAMES IRVINE
WILL 93-E PG 87
DB 19 PG 367
DB 233 PG 384

-L- REV CURVE DATA

Pls Sta 121+77.991 θs = 3° 04' 40.3" Ls = 65.000 LT = 43.34 ST = 21.673	Pls Sta 123+89.699 Δ = 34° 52' 41.1" (RT) L = 368.286 T = 190.048 R = 605.000 SE = 0.069	Pls Sta 125+89.609 θs = 3° 04' 40.3" Ls = 65.000 LT = 43.34 ST = 21.673
---	---	---

- DRIVEWAY NOTES:**
- ALL PROP. DRIVEWAY RADII 3.0m UNLESS OTHERWISE SHOWN.
 - PROP. DRIVEWAY WIDTHS AT END OF RADII SHALL BE 4.9m MIN. UNLESS OTHERWISE SHOWN. TAPER DRIVEWAY TO EXISTING DRIVEWAY WIDTH.

SEE SHEET 35 FOR -L- REV. PROFILE