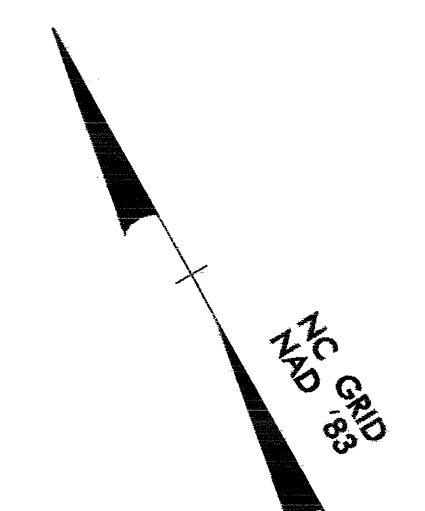
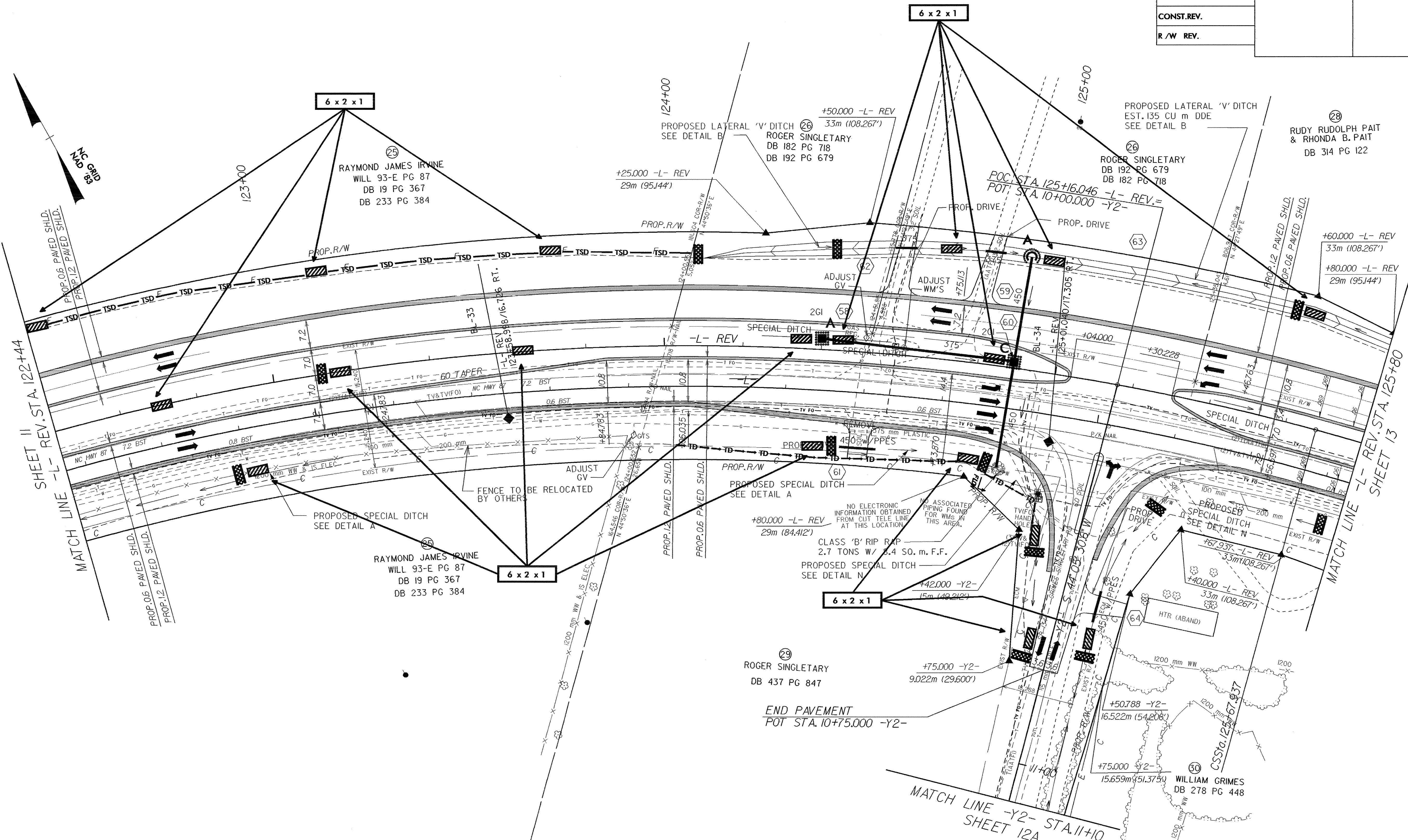
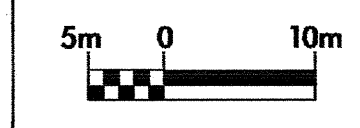




PROJECT REFERENCE NO. R-2562C	SHEET NO. EC-43/CONST.12
R/W SHEET NO.	
ROADWAY DESIGN ENGINEER	HYDRAULICS ENGINEER
CONST.REV.	
R/W REV.	



SHEET II  
-L- REV. STA. 122+44  
MATCH LINE

MATCH LINE  
-L- REV. STA. 125+80  
SHEET 13

-L- REV CURVE DATA

Pls Sta 121+77.991	Pls Sta 123+89.699	Pls Sta 125+89.609
$\theta_s = 3^{\circ} 04' 40.3''$	$\Delta = 34^{\circ} 52' 41.1''$ (RT)	$\theta_s = 3^{\circ} 04' 40.3''$
Ls = 65.000	L = 368.286	Ls = 65.000
LT = 43.34	L = 190.048	LT = 43.34
ST = 21.673	R = 605.000	ST = 21.673
	SE = 0.069	

- DRIVEWAY NOTES:**
- ALL PROP. DRIVEWAY RADII 3.0m UNLESS OTHERWISE SHOWN.
  - PROP. DRIVEWAY WIDTHS AT END OF RADII SHALL BE 4.9m MIN. UNLESS OTHERWISE SHOWN. TAPER DRIVEWAY TO EXISTING DRIVEWAY WIDTH.

SEE SHEET 2-B FOR -Y2- INTERSECTION DETAIL  
SEE SHEET 36 FOR -L- REV. PROFILE  
SEE SHEET 46 FOR -Y2- PROFILE