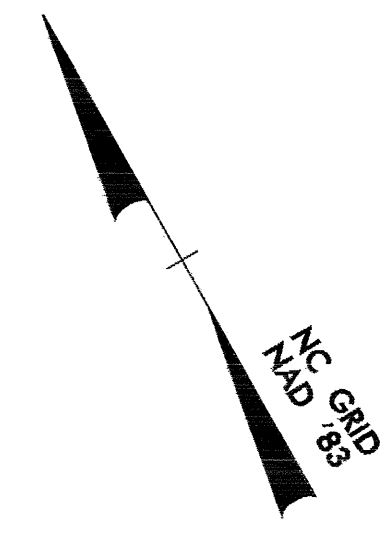
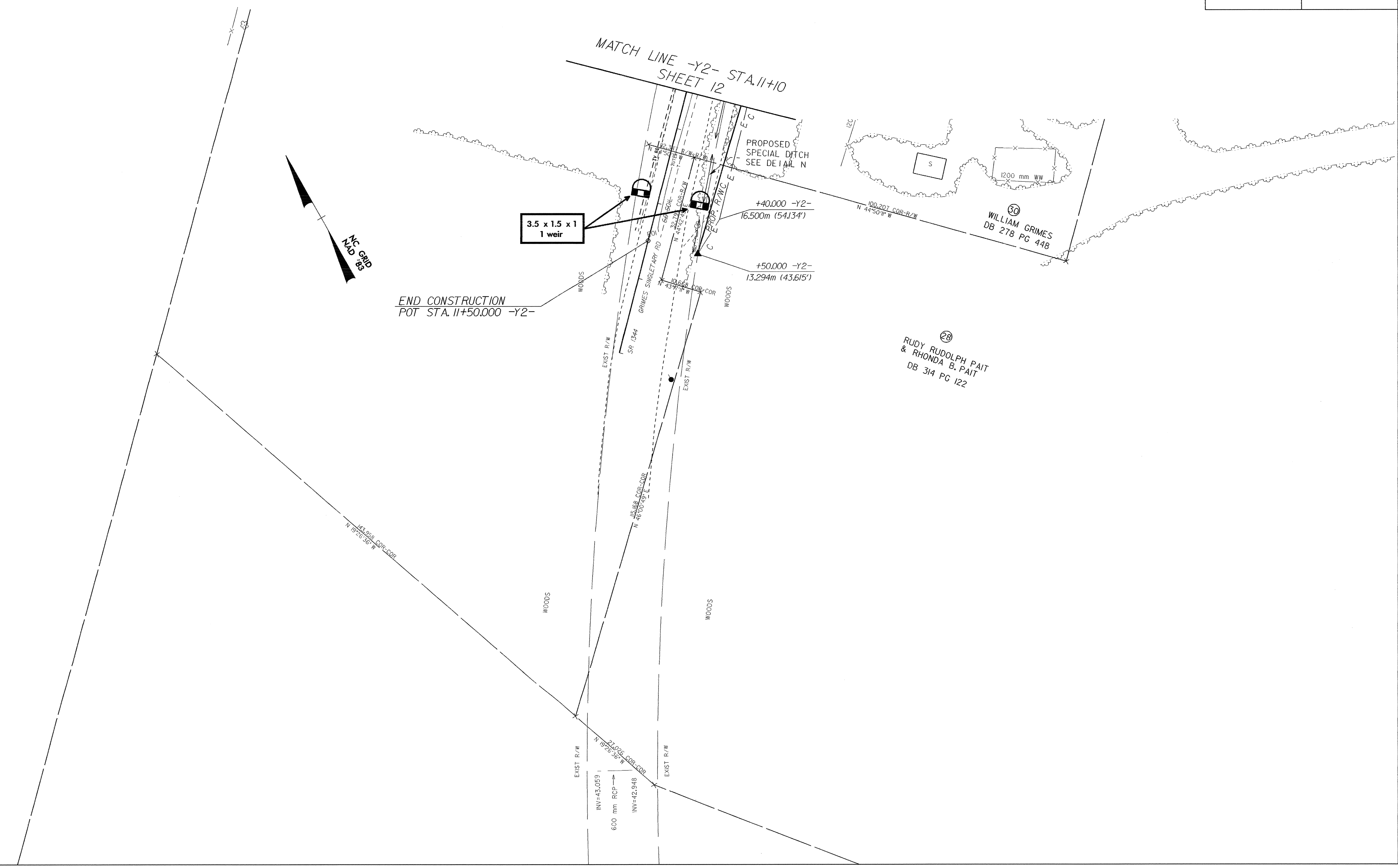
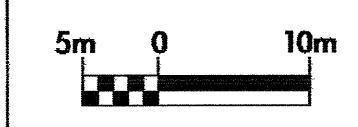


08/25/09



PROJECT REFERENCE NO. R-2562C		SHEET NO. EC-44/CON.12A	
R/W SHEET NO.			
ROADWAY DESIGN ENGINEER		HYDRAULICS ENGINEER	
CONST.REV.			
R/W REV.			



3.5 x 1.5 x 1  
1 weir

END CONSTRUCTION  
POT STA. 11+50.000 -Y2-

28  
RUDY RUDOLPH PAIT  
& RHONDA B. PAIT  
DB 314 PG 122

30  
WILLIAM GRIMES  
DB 278 PG 448