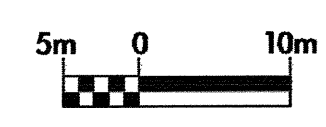
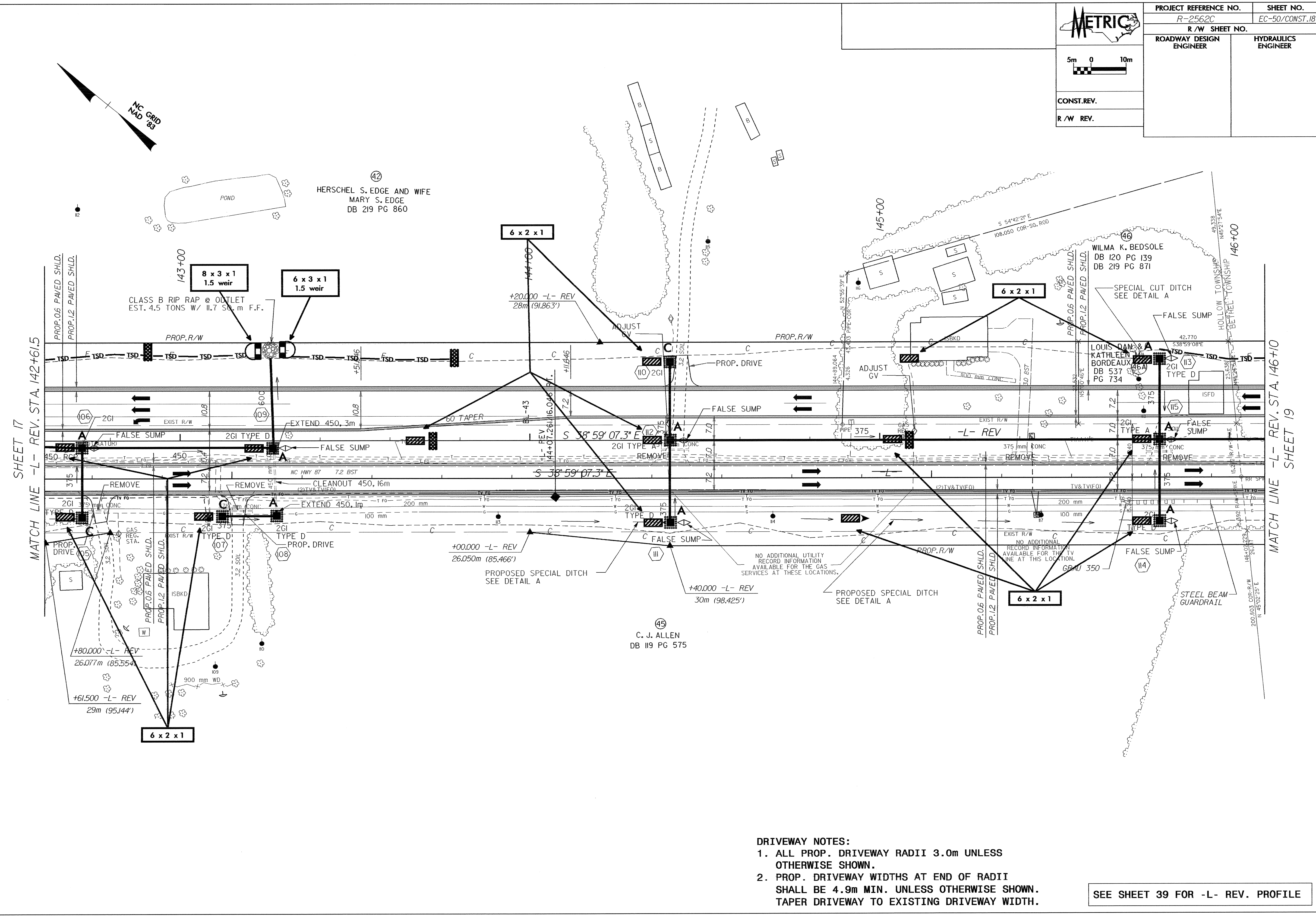
	PROJECT REFERENCE NO.	SHEET NO.
	R-2562C	EC-50/CONST.18
	R/W SHEET NO.	
ROADWAY DESIGN ENGINEER	HYDRAULICS ENGINEER	
CONST.REV.		
R/W REV.		



01/22/99
 d:\REV\1\28-UCT\2004\186\Roadway\proj\2562c-18.psh
 186.psh



- DRIVEWAY NOTES:**
- ALL PROP. DRIVEWAY RADII 3.0m UNLESS OTHERWISE SHOWN.
 - PROP. DRIVEWAY WIDTHS AT END OF RADII SHALL BE 4.9m MIN. UNLESS OTHERWISE SHOWN. TAPER DRIVEWAY TO EXISTING DRIVEWAY WIDTH.

SEE SHEET 39 FOR -L- REV. PROFILE