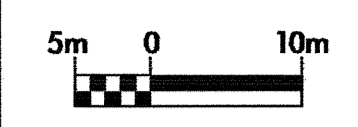
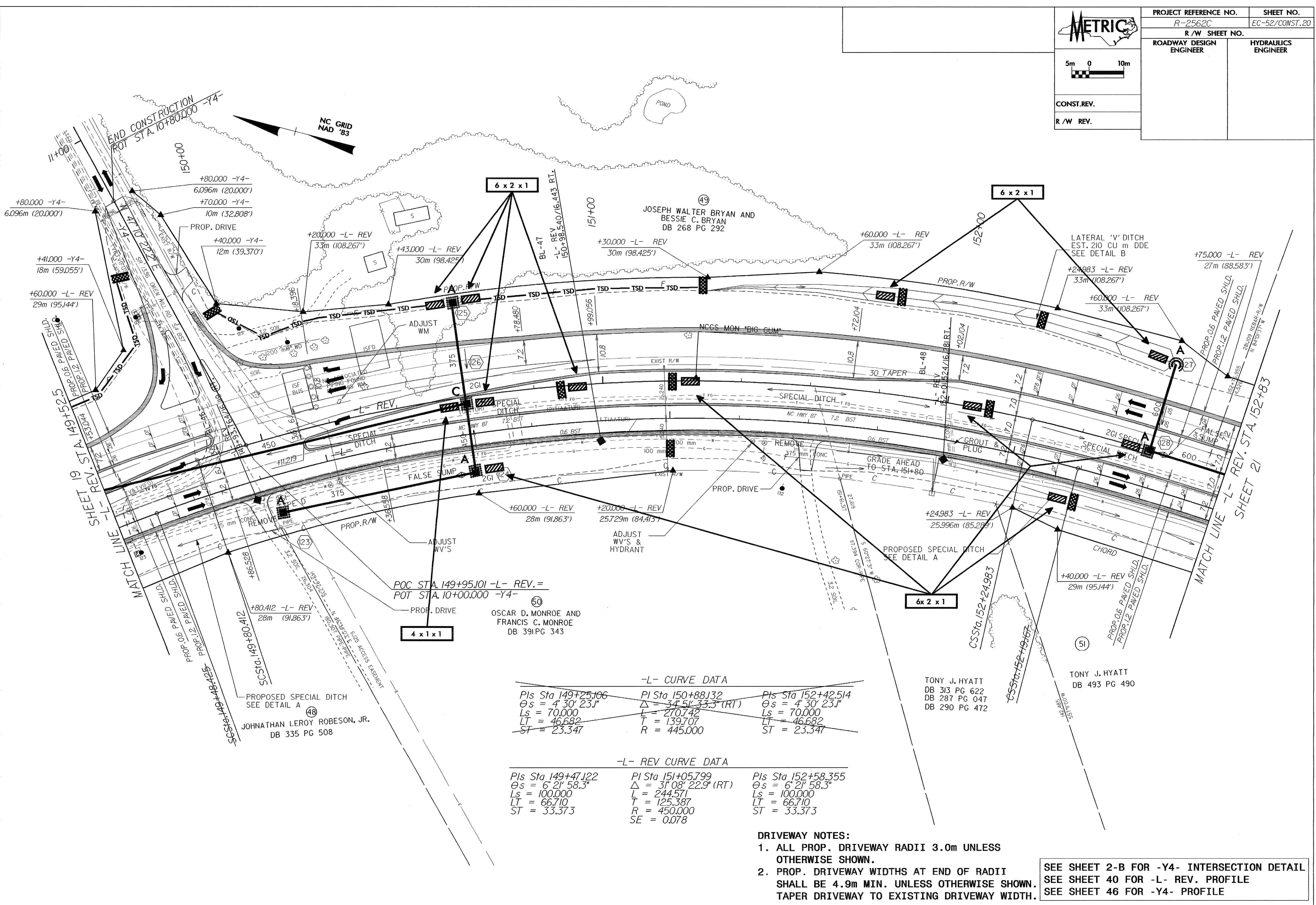




PROJECT REFERENCE NO. R-2562C		SHEET NO. EC-52/CONST.20
R/W SHEET NO.		
ROADWAY DESIGN ENGINEER	HYDRAULICS ENGINEER	
CONST. REV.		
R/W REV.		



09/25/09
 28-OCT-2009 14:17 Roadway\pno\1-2562c-e20.psh
 d:\REV\2009\2562c\2009\1-2562c-e20.psh



-L- CURVE DATA

Pls Sta 149+25.106	PI Sta 150+88.132	Pls Sta 152+42.514
$\theta_s = 4^\circ 30' 23.1''$	$\Delta = 34^\circ 51' 33.3''$ (RT)	$\theta_s = 4^\circ 30' 23.1''$
$L_s = 70.000$	$L = 270.742$	$L_s = 70.000$
$LT = 46.682$	$T = 139.707$	$LT = 46.682$
$ST = 23.347$	$R = 445.000$	$ST = 23.347$

-L- REV CURVE DATA

Pls Sta 149+47.122	PI Sta 151+05.799	Pls Sta 152+58.355
$\theta_s = 6^\circ 21' 58.3''$	$\Delta = 31^\circ 08' 22.9''$ (RT)	$\theta_s = 6^\circ 21' 58.3''$
$L_s = 100.000$	$L = 244.571$	$L_s = 100.000$
$LT = 66.710$	$T = 125.387$	$LT = 66.710$
$ST = 33.373$	$R = 450.000$	$ST = 33.373$
	$SE = 0.078$	

- DRIVEWAY NOTES:**
- ALL PROP. DRIVEWAY RADII 3.0m UNLESS OTHERWISE SHOWN.
 - PROP. DRIVEWAY WIDTHS AT END OF RADII SHALL BE 4.9m MIN. UNLESS OTHERWISE SHOWN. TAPER DRIVEWAY TO EXISTING DRIVEWAY WIDTH.

SEE SHEET 2-B FOR -Y4- INTERSECTION DETAIL
 SEE SHEET 40 FOR -L- REV. PROFILE
 SEE SHEET 46 FOR -Y4- PROFILE