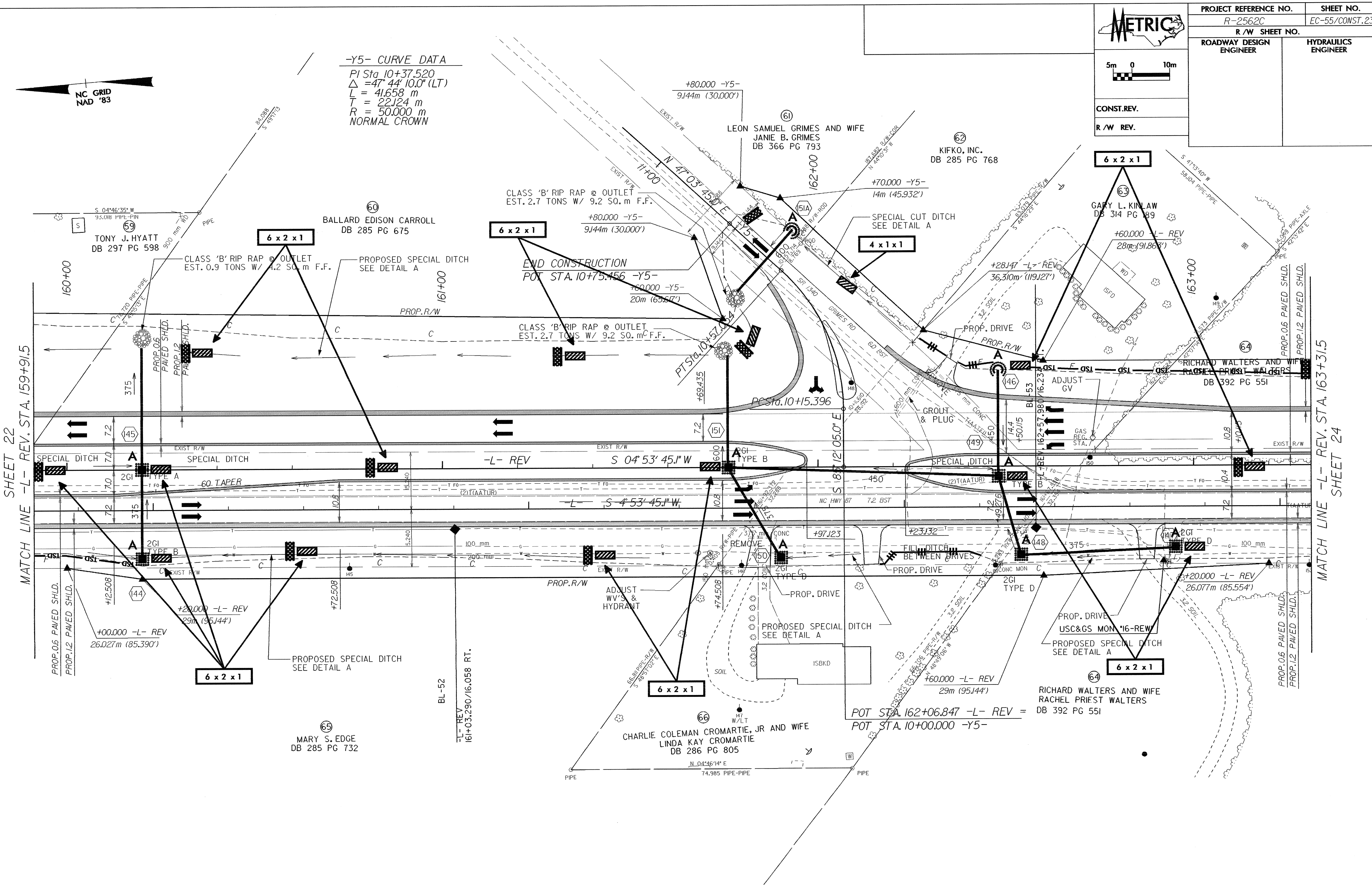


28-OCT-2004 15:21 d:\REU\16\16\16\16\Roadway\proj\2562c\2562c.e23.psh
 08/25/09



-Y5- CURVE DATA
 PI Sta 10+37.520
 $\Delta = 47^{\circ} 44' 10.0''$ (LT)
 $L = 41.658$ m
 $T = 22.124$ m
 $R = 50.000$ m
 NORMAL CROWN

	PROJECT REFERENCE NO.	SHEET NO.
	R-2562C	EC-55/CONST.23
	R/W SHEET NO.	
ROADWAY DESIGN ENGINEER	HYDRAULICS ENGINEER	
CONST. REV.		
R/W REV.		

SHEET 22

SHEET 24

DRIVEWAY NOTES:

- ALL PROP. DRIVEWAY RADII 3.0m UNLESS OTHERWISE SHOWN.
- PROP. DRIVEWAY WIDTHS AT END OF RADII SHALL BE 4.9m MIN. UNLESS OTHERWISE SHOWN. TAPER DRIVEWAY TO EXISTING DRIVEWAY WIDTH.

SEE SHEET 2-B FOR -Y5- INTERSECTION DETAIL
 SEE SHEET 41 FOR -L- REV. PROFILE
 SEE SHEET 47 FOR -Y5- PROFILE