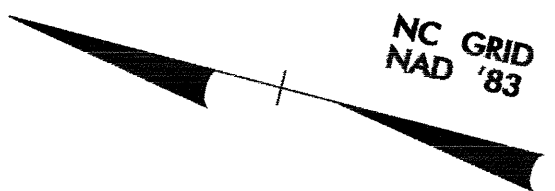
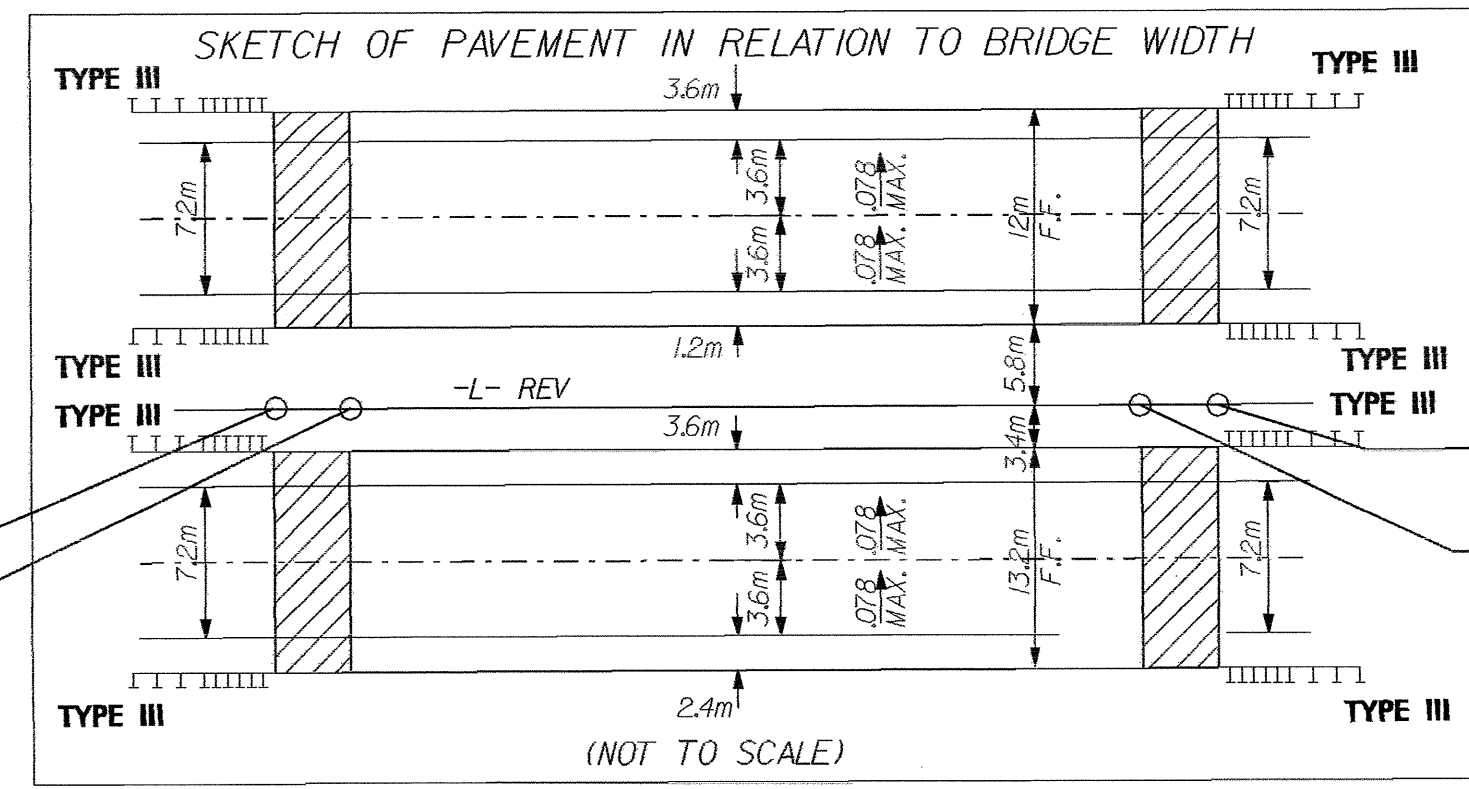
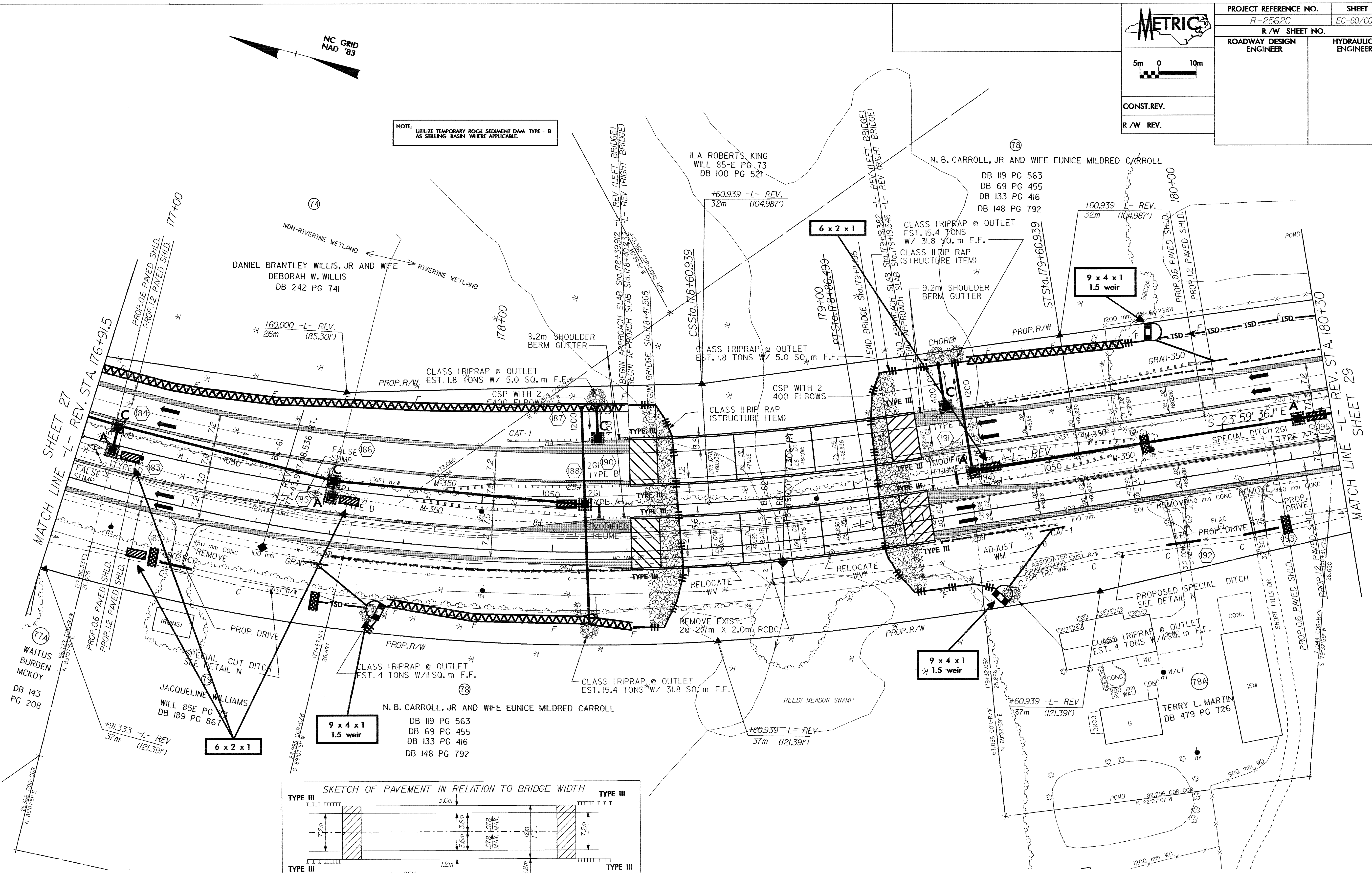
	PROJECT REFERENCE NO. R-2562C	SHEET NO. EC-60/CONST.28
	R/W SHEET NO.	
ROADWAY DESIGN ENGINEER	HYDRAULICS ENGINEER	
CONST. REV.		
R/W REV.		



NOTE: UTILIZE TEMPORARY ROCK SEDIMENT DAM TYPE - B AS STILLING BASIN WHERE APPLICABLE.



- DRIVEWAY NOTES:**
- ALL PROP. DRIVEWAY RADII 3.0m UNLESS OTHERWISE SHOWN.
  - PROP. DRIVEWAY WIDTHS AT END OF RADII SHALL BE 4.9m MIN. UNLESS OTHERWISE SHOWN. TAPER DRIVEWAY TO EXISTING DRIVEWAY WIDTH.

SEE SHEET 44 FOR -L- REV. PROFILE

28-OCT-2009 11:25:22 Roadway\pco\1-2562c.e28upsh  
 d:\REU\c\pco\1-2562c.e28upsh