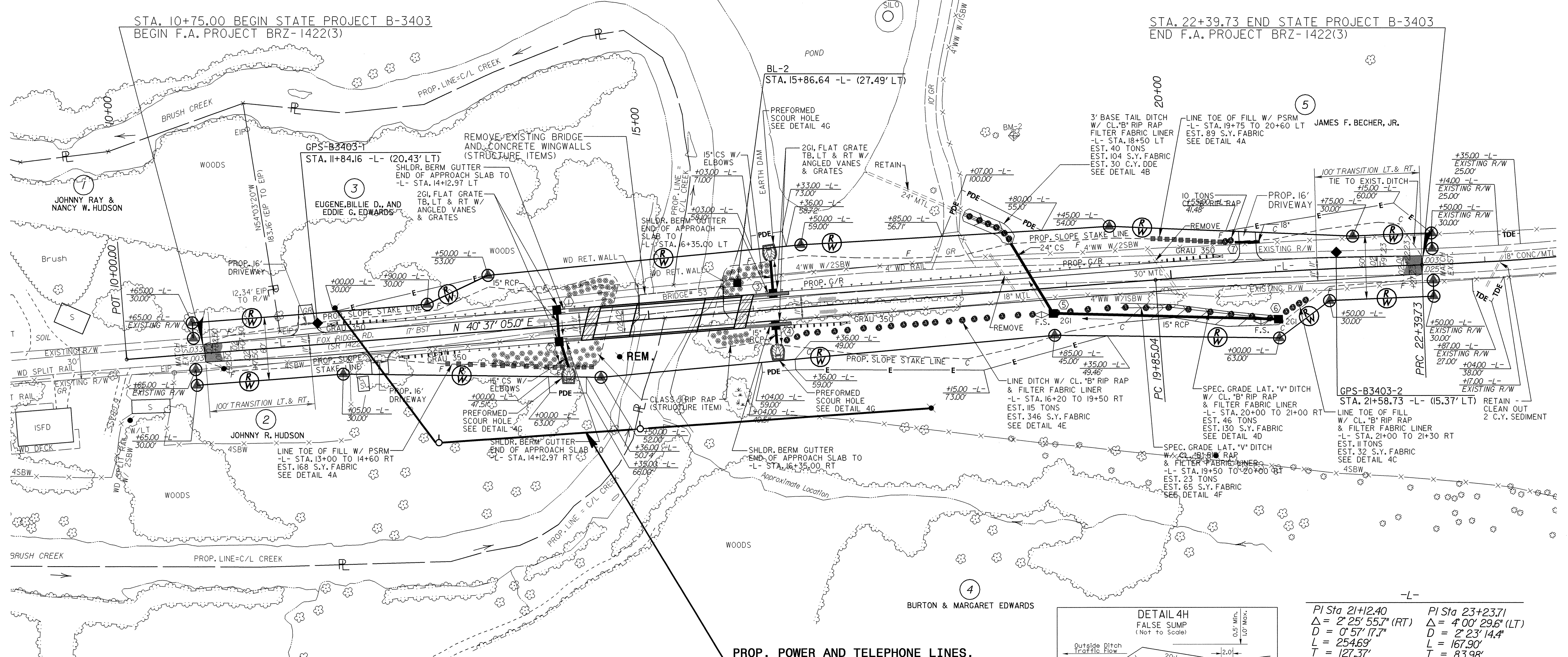
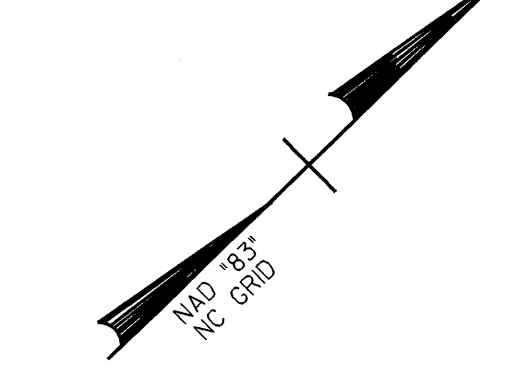
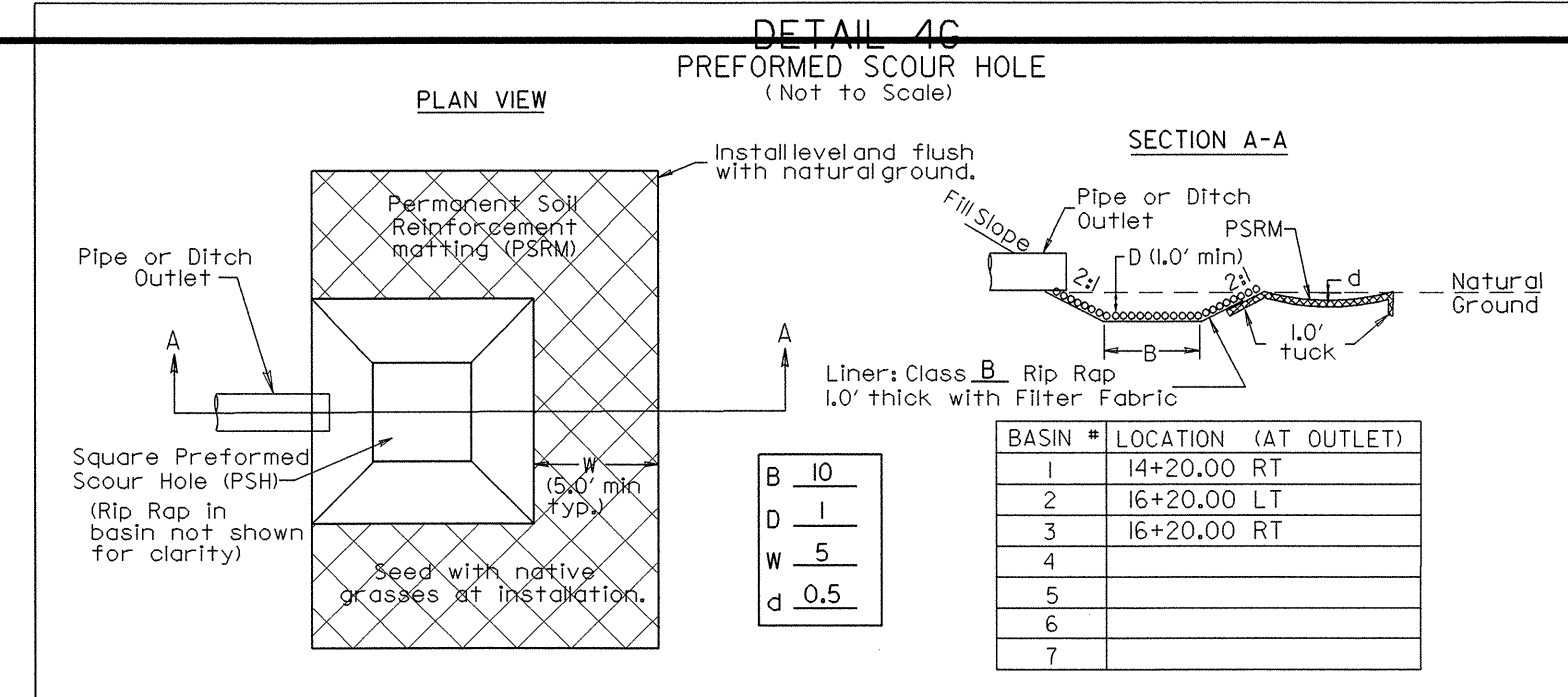
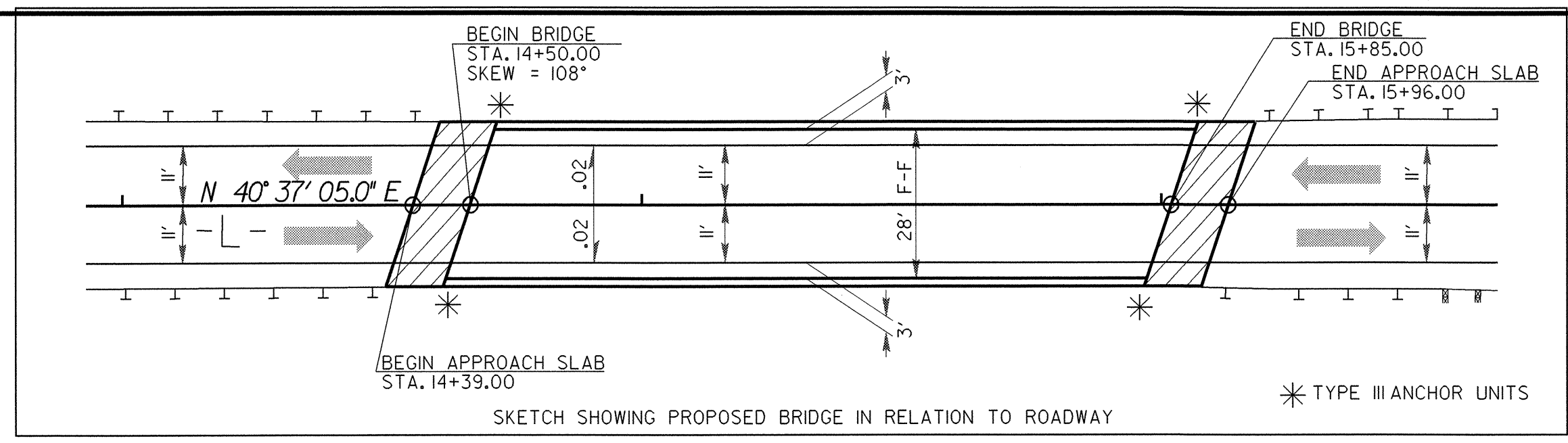
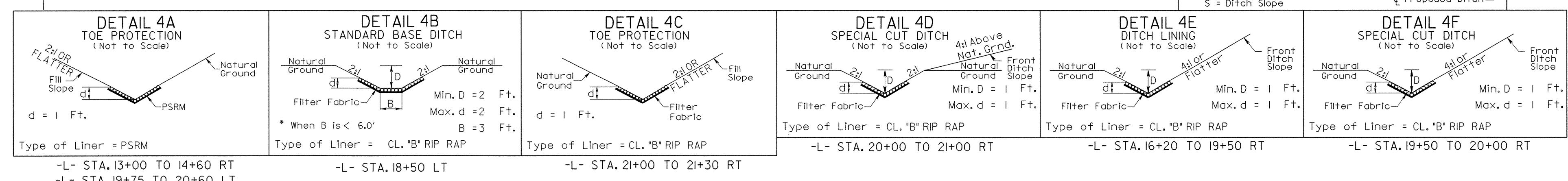


UTILITIES BY OTHERS

NOTE:  
ALL PROPOSED UTILITY WORK  
SHOWN ON THIS SHEET WILL  
BE DONE BY OTHERS



**DATUM DESCRIPTION**  
THE LOCALIZED COORDINATE SYSTEM DEVELOPED FOR THIS PROJECT IS BASED ON THE STATE PLANE COORDINATES ESTABLISHED BY NCOS FOR MONUMENT "SALMON" WITH NAD 83 STATE PLANE GRID COORDINATES OF NORTHING: 1025541.0231(1) EASTING: 1408379.391(1) THE AVERAGE COMBINED GRID FACTOR USED ON THIS PROJECT (GROUND TO GRID) IS: 0.999997490 THE N.C. LAMBERT GRID BEARING LOCALIZED HORIZONTAL GROUND DISTANCE FROM "SALMON" TO L- STATION 10+00.00 IS S 0° 12' 51.8" E 13250.95 11 ALL LINEAR DIMENSIONS ARE LOCALIZED HORIZONTAL DISTANCES VERTICAL DATUM USED IS NGVD 29



PI Sta 21+12.40  
Δ = 2' 25" 55.7" (RT)  
D = 0' 57" 17.7"  
L = 254.69'  
T = 127.37'  
R = 6,000.00'  
SE = NC  
DS = 40 mph

PI Sta 23+23.71  
Δ = 4' 00" 29.6" (LT)  
D = 2' 23" 14.4"  
L = 167.90'  
T = 83.98'  
R = 2,400.00'  
SE = EXIST  
DS = 40 mph

NOTES:  
(1) TEMP. FENCING REQUIRED STA. 10+45.00 TO STA. 14+95.00 RT. STA. 15+15.00 TO STA. 23+30.00 RT. STA. 18+00.00 TO STA. 22+70.00 LT. TO MAINTAIN LIVESTOCK DURING CONSTRUCTION.  
(2) DRIVEWAY RADIAT -L- EOP = 10' UNLESS NOTED OTHERWISE.

8/17/99  
3-16-04 BP MOVED DRIVEWAY AND ADJUSTED TCE AND PDE FOR PARCEL 5  
05-OCT-2004 10:12  
R:\Utilities\Proj-Uo-1\B3403-RDY\_UO2.dwg  
1/22/2006