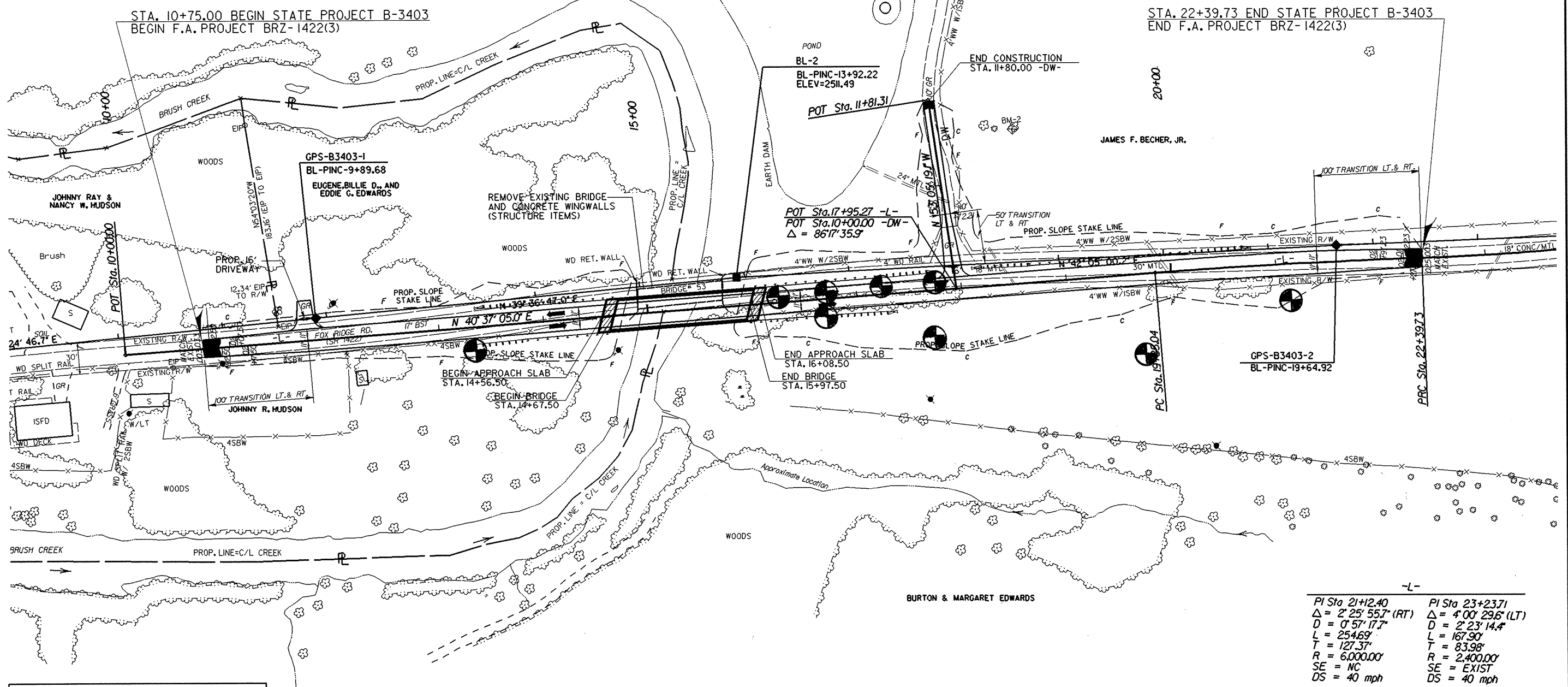


JAMES F. BECHER, JR.



**DATUM DESCRIPTION**

THE LOCALIZED COORDINATE SYSTEM DEVELOPED FOR THIS PROJECT IS BASED ON THE STATE PLANE COORDINATES ESTABLISHED BY NC83 FOR MONUMENT "SALMON" WITH NAD 83 STATE PLANE GRID COORDINATES OF NORTHING: 1025541.023(1) EASTING: 1408379.39(1) THE AVERAGE COMBINED GRID FACTOR USED ON THIS PROJECT (GROUND TO GRID) IS: 0.999991490 THE N.C. LAMBERT GRID BEARING LOCALIZED HORIZONTAL GROUND DISTANCE FROM

PI Sta 21+12.40	PI Sta 23+23.71
$\Delta = 2' 25' 55.7" (RT)$	$\Delta = 4' 00' 29.6" (LT)$
$D = 0' 57' 17.7"$	$D = 2' 23' 14.4"$
$L = 254.69'$	$L = 167.90'$
$T = 127.37'$	$T = 83.98'$
$R = 6,000.00'$	$R = 2,400.00'$
SE = NC	SE = EXIST
DS = 40 mph	DS = 40 mph

NOTES:  
(1) TEMP. FENCING REQUIRED STA. ????.00 TO STA. ????.00 RT. & STA. ????.00 TO STA. ????.00 LT. TO MAINTAIN LIVESTOCK DURING CONSTRUCTION.  
(2) DRIVEWAY RADII AT -L- EOP = 10' UNLESS NOTED OTHERWISE.