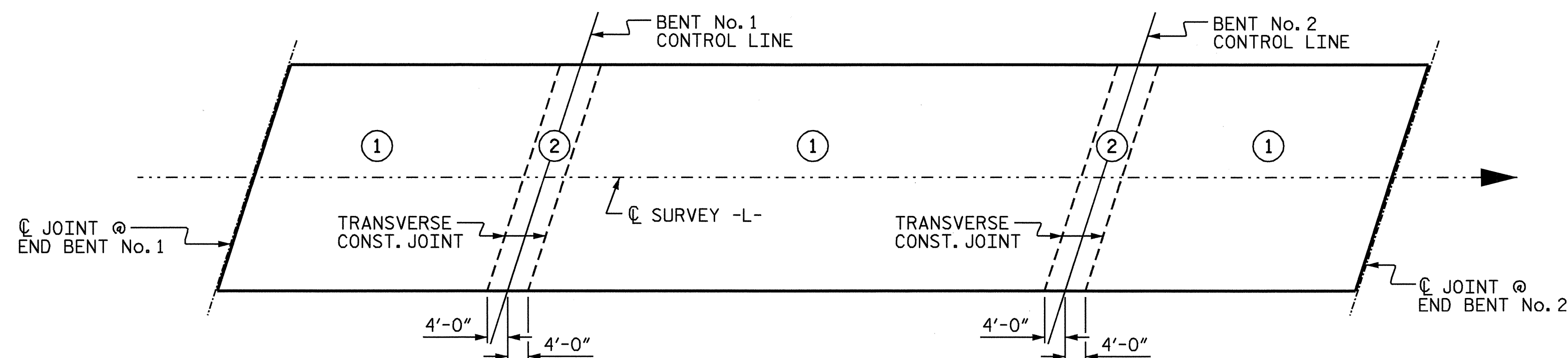
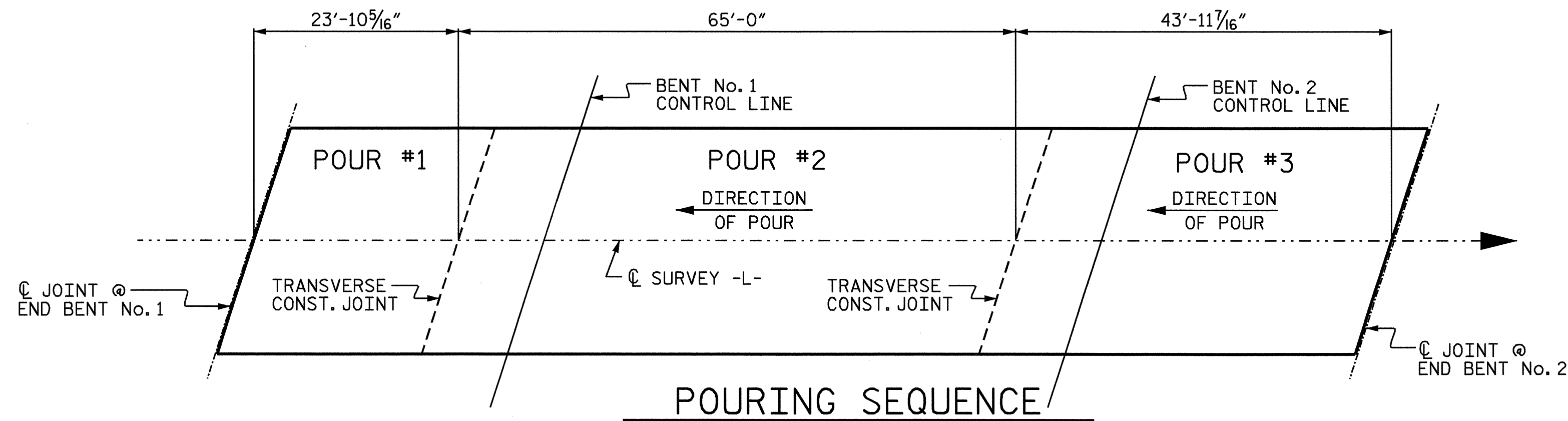


TRANSVERSE CONSTRUCTION JOINT DETAIL

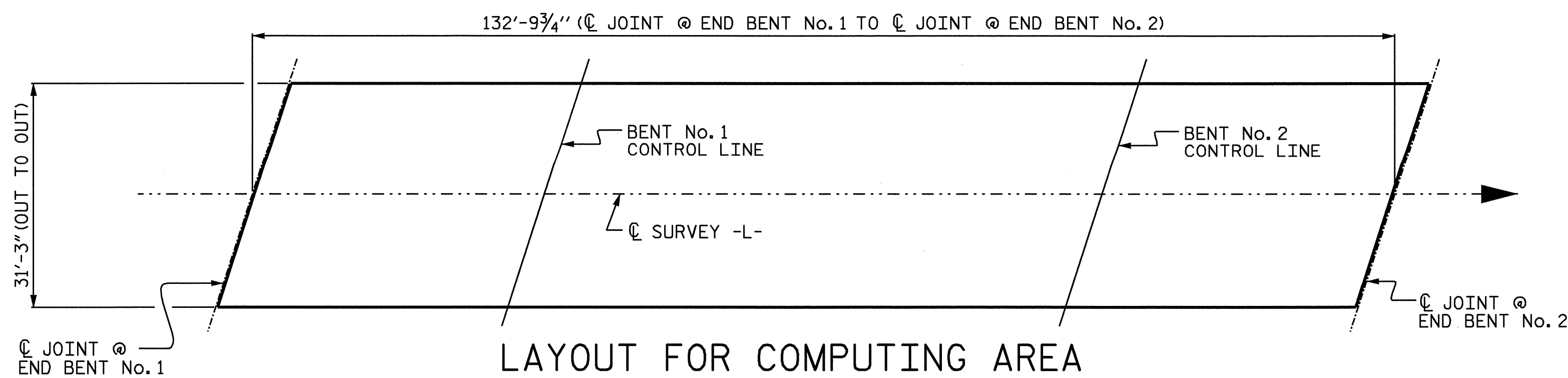
NOTE: REINFORCING STEEL IN SLAB NOT SHOWN. LONGITUDINAL REINFORCING STEEL SHALL BE CONTINUOUS THRU JOINT

SUPERSTRUCTURE REINFORCING STEEL LENGTHS ARE BASED ON THE FOLLOWING MINIMUM SPLICE LENGTHS

BAR SIZE	SUPERSTRUCTURE EXCEPT APPROACH SLABS, PARAPET, AND BARRIER RAIL		APPROACH SLABS		PARAPET AND BARRIER RAIL
	EPOXY COATED	UNCOATED	EPOXY COATED	UNCOATED	
#4	2'-0"	1'-9"	2'-0"	1'-9"	2'-9"
#5	2'-6"	2'-2"	2'-6"	2'-2"	3'-5"
#6	3'-0"	2'-7"	3'-10"	2'-7"	4'-4"
#7	5'-3"	3'-6"	---	---	---
#8	6'-10"	4'-7"	---	---	---



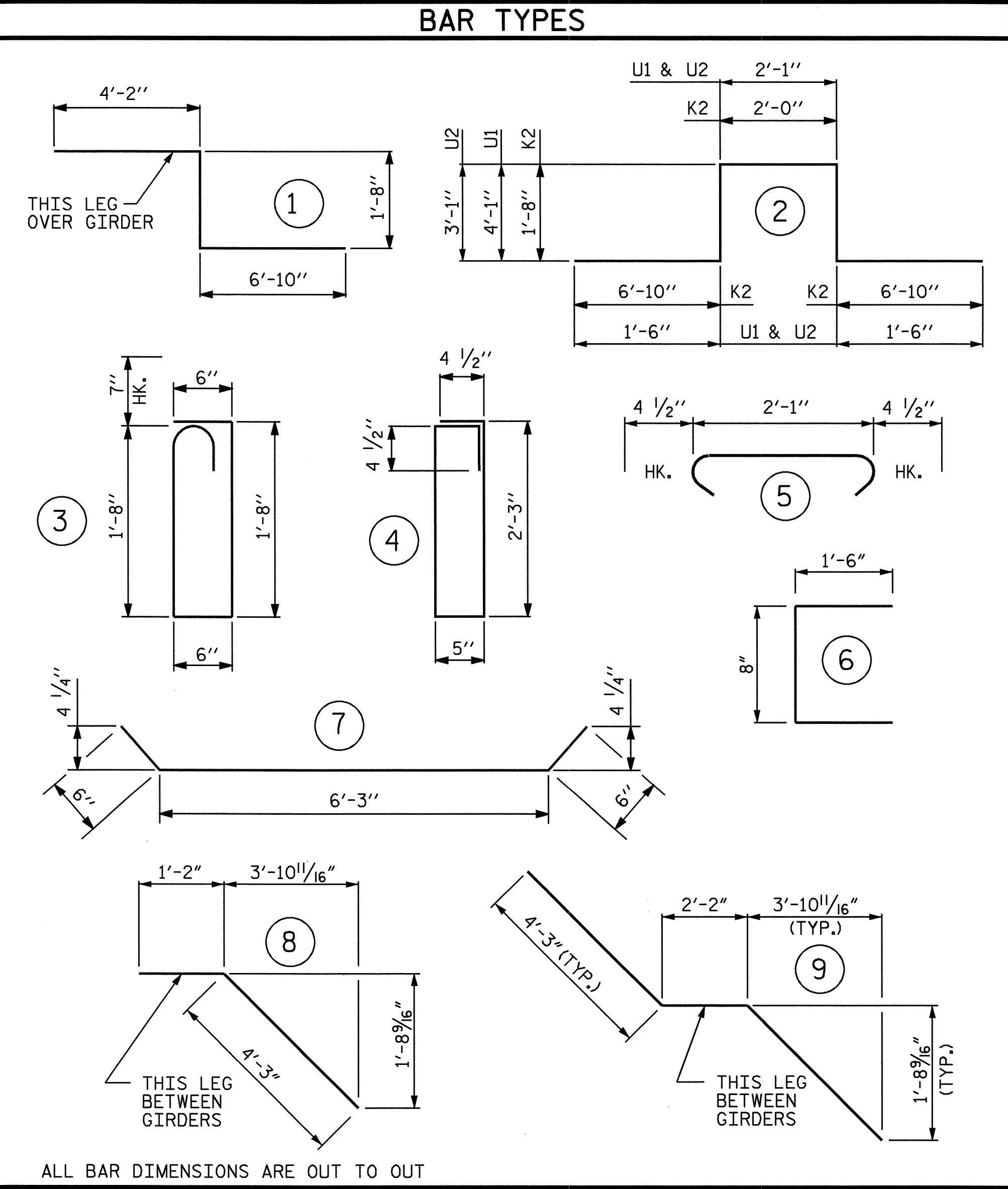
OPTIONAL POURING SEQUENCE
POUR (2) CAN NOT BE STARTED UNTIL BOTH ADJACENT (1) POURS REACH A MINIMUM OF 3000 PSI.



LAYOUT FOR COMPUTING AREA OF REINFORCED CONCRETE DECK SLAB
(SQ. FT. = 4150)

BILL OF MATERIAL
SPAN "A", "B", & "C"

BAR NO	SIZE	TYPE	LENGTH	WEIGHT
* A1	211	5	STR 30'-11"	6804
A2	211	5	STR 30'-11"	6804
* A101	2	5	STR 29'-1"	61
* A102	2	5	STR 27'-3"	57
* A103	2	5	STR 25'-5"	53
* A104	2	5	STR 23'-8"	49
* A105	2	5	STR 21'-10"	46
* A106	2	5	STR 20'-1"	42
* A107	2	5	STR 18'-3"	38
* A108	2	5	STR 16'-6"	34
* A109	2	5	STR 14'-8"	31
* A110	2	5	STR 12'-11"	27
* A111	2	5	STR 11'-1"	23
* A112	2	5	STR 9'-4"	19
* A113	2	5	STR 7'-6"	16
* A114	2	5	STR 5'-9"	12
* A115	2	5	STR 3'-11"	8
* A116	2	5	STR 2'-1"	4
A201	2	5	STR 29'-1"	61
A202	2	5	STR 27'-3"	57
A203	2	5	STR 25'-5"	53
A204	2	5	STR 23'-8"	49
A205	2	5	STR 21'-10"	46
A206	2	5	STR 20'-1"	42
A207	2	5	STR 18'-3"	38
A208	2	5	STR 16'-6"	34
A209	2	5	STR 14'-8"	31
A210	2	5	STR 12'-11"	27
A211	2	5	STR 11'-1"	23
A212	2	5	STR 9'-4"	19
A213	2	5	STR 7'-6"	16
A214	2	5	STR 5'-9"	12
A215	2	5	STR 3'-11"	8
A216	2	5	STR 2'-1"	4
* B1	38	4	STR 20'-3"	514
* B2	38	7	STR 40'-0"	3107
* B3	36	7	STR 15'-0"	1104
* B4	19	4	STR 20'-0"	254
* B5	10	4	STR 28'-1"	188
* B6	132	5	STR 45'-7"	6276
* G1	2	5	STR 32'-5"	68
* K1	8	8	1 12'-8"	271
* K2	8	8	2 19'-0"	406
K3	6	5	7'-3"	45
K4	6	5	STR 6'-9"	42
K5	12	4	STR 5'-2"	41
K6	36	4	STR 6'-11"	166
K7	18	6	STR 6'-11"	187
K8	16	4	8 5'-5"	58
K9	16	4	9 10'-8"	114
* S1	42	5	3 4'-11"	215
S2	21	4	4 6'-1"	85
S3	114	4	5 2'-10"	216
S4	42	4	6 3'-8"	103
U1	30	4	2 13'-3"	266
U2	12	4	2 11'-3"	90
REINFORCING STEEL	LBS.			15013
* EPOXY COATED REINFORCING STEEL	LBS.			13451



SUPERSTRUCTURE BILL OF MATERIAL

	CLASS AA CONCRETE (CU. YDS.)	REINFORCING STEEL (LBS.)	EPOXY COATED REINFORCING STEEL (LBS.)
SPAN "A", "B", & "C"			
POUR #1	25.3	15,013	13,451
POUR #2	74.2		
POUR #3	53.6		
TOTALS *	153.1	15,013	13,451

** QUANTITIES FOR BARRIER RAIL ARE NOT INCLUDED

GROOVING BRIDGE FLOORS

APPROACH SLABS	1510 SQ.FT.
BRIDGE DECK	3309 SQ.FT.
TOTAL	4819 SQ.FT.

PROJECT NO. B-3403
ALLEGHANY COUNTY
 STATION: 15+17.50 -L-

STATE OF NORTH CAROLINA
 DEPARTMENT OF TRANSPORTATION
 RALEIGH
 STANDARD
 SUPERSTRUCTURE
 BILL OF MATERIAL



REVISIONS

NO.	BY:	DATE:	NO.	BY:	DATE:
1			3		
2			4		

SHEET NO. S-17
 TOTAL SHEETS 34

ASSEMBLED BY: M. ALLEN DATE: 11/03
 CHECKED BY: B.N. GRADY DATE: 12/03
 DRAWN BY: JMB 5/87 REV. 6/1/94 EEM/GRP
 CHECKED BY: SJD 9/87