

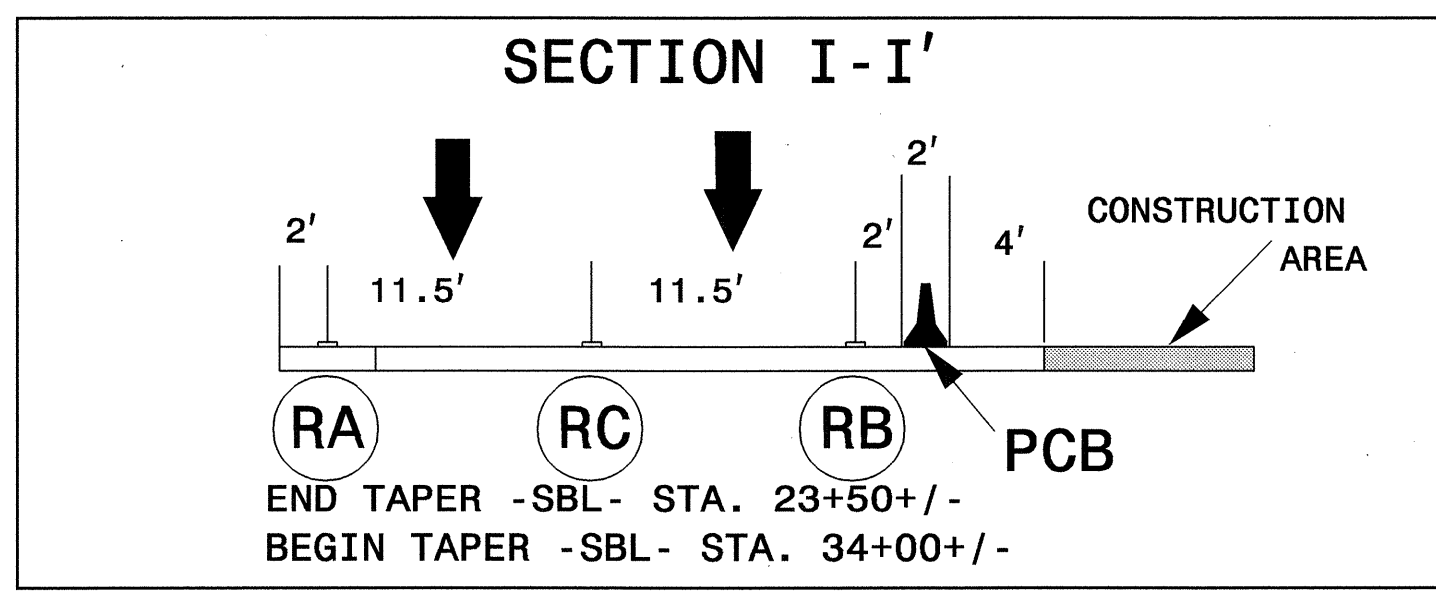
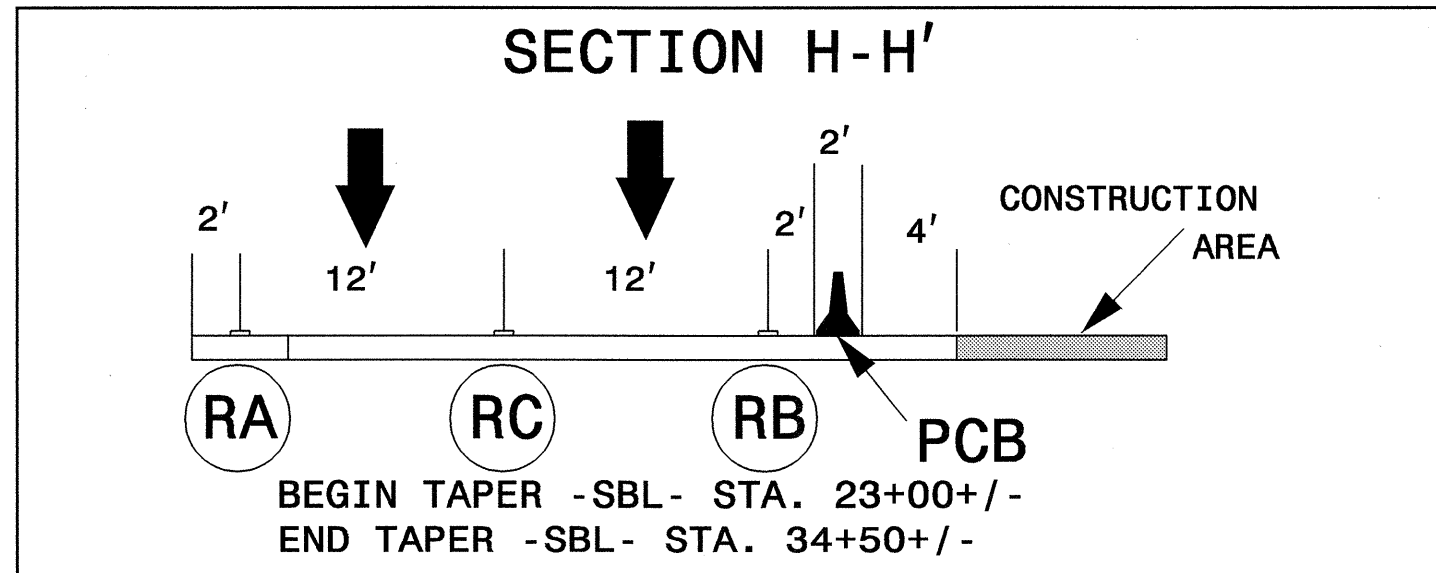
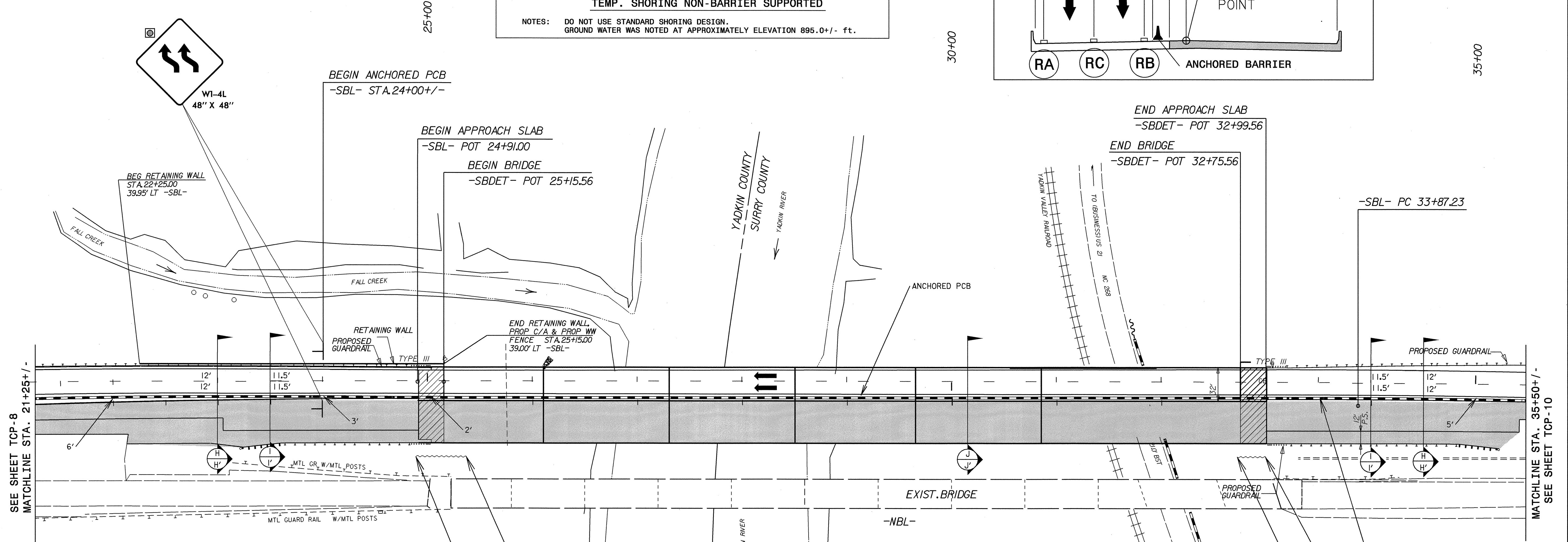
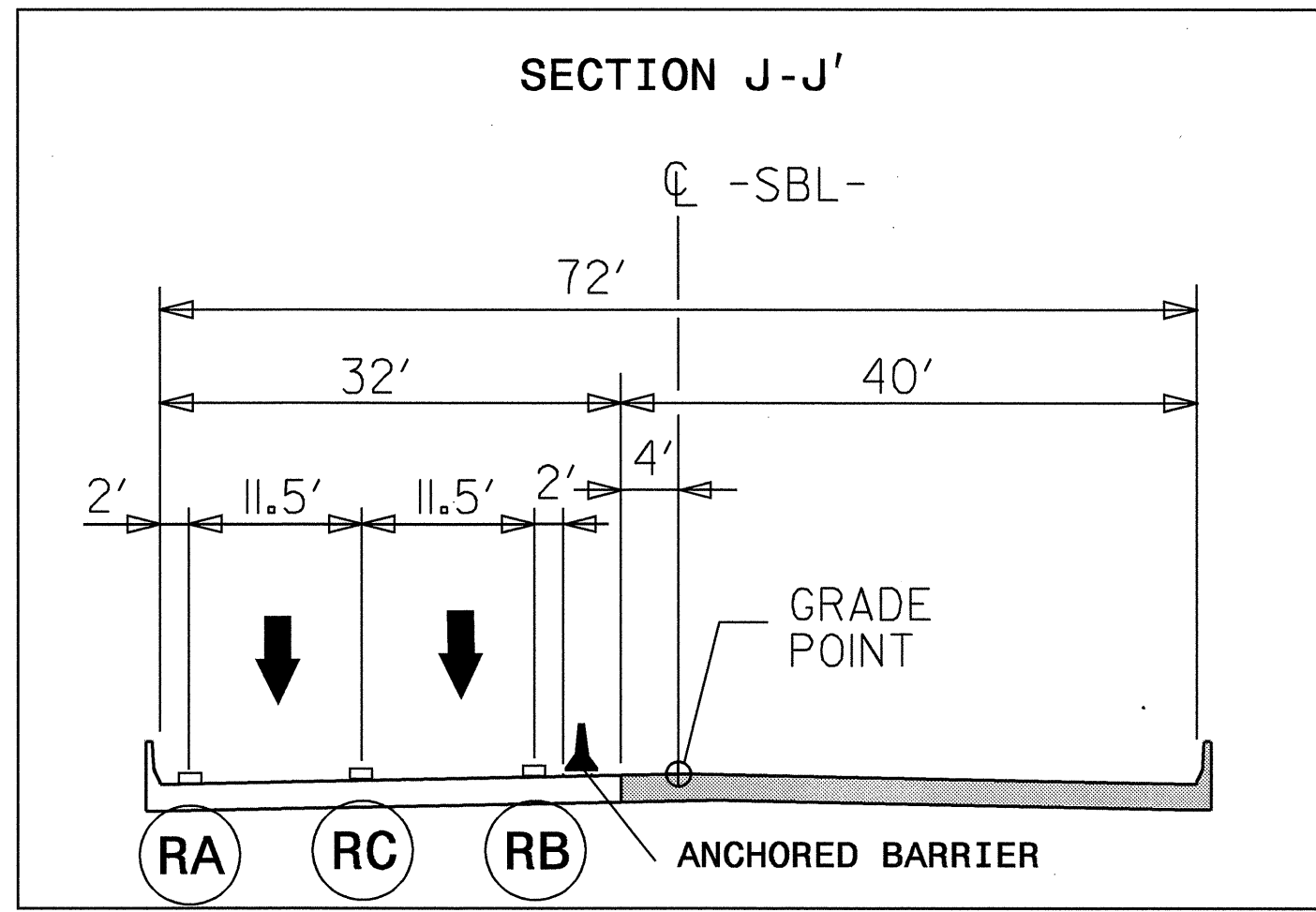
NAD 83 / NC GRID

FOR DESIGN OF TEMPORARY SHORING, USE THE FOLLOWING SOIL PARAMETERS:

UNIT WEIGHT OF SOIL ABOVE WATER TABLE,  $\gamma = 120$  pcf  
 UNIT WEIGHT OF SOIL BELOW WATER TABLE,  $\gamma' = 60$  pcf  
 FRICTION ANGLE,  $\phi = 29^\circ$   
 COHESION,  $c = 0$  psf

TEMP. SHORING NON-BARRIER SUPPORTED

NOTES: DO NOT USE STANDARD SHORING DESIGN.  
 GROUND WATER WAS NOTED AT APPROXIMATELY ELEVATION 895.0 +/- ft.



END SHORING  
 -SBL- STA. 25+37 +/-  
 52.5' SIGHT OF -SBL-

BEGIN SHORING  
 -SBL- STA. 24+88 +/-  
 52.5' RIGHT OF -SBL-

END ANCHORED PCB  
 -SBL- STA. 33+50 +/-

END SHORING  
 -SBL- STA. 32+99 +/-  
 52.5' RIGHT OF -SBL-

BEGIN SHORING  
 -SBL- STA. 32+72 +/-  
 52.5' RIGHT OF -SBL-

SEE PM-1 FOR PAVEMENT MARKING AND MARKERS SCHEDULE

APPROVED:	DATE: 9/13/04	<b>PHASE II, STEP 1 &amp; 2</b>							
SCALE: NONE	DATE: JUNE 2004		<table border="1"> <tr> <th colspan="2">REVISIONS</th> </tr> <tr> <td> </td> <td> </td> </tr> <tr> <td> </td> <td> </td> </tr> </table>	REVISIONS					
REVISIONS									
DWG. BY: MRM	DESIGN BY: MRM	REVIEWED BY: JWG							
<table border="1"> <tr> <td>CARD FILE</td> </tr> </table>			CARD FILE						
CARD FILE									

13-SEP-2004 12:10  
 L:\TCP\4025a\_tcp-phase2.dgn  
 mmamrquez AT TFC195141