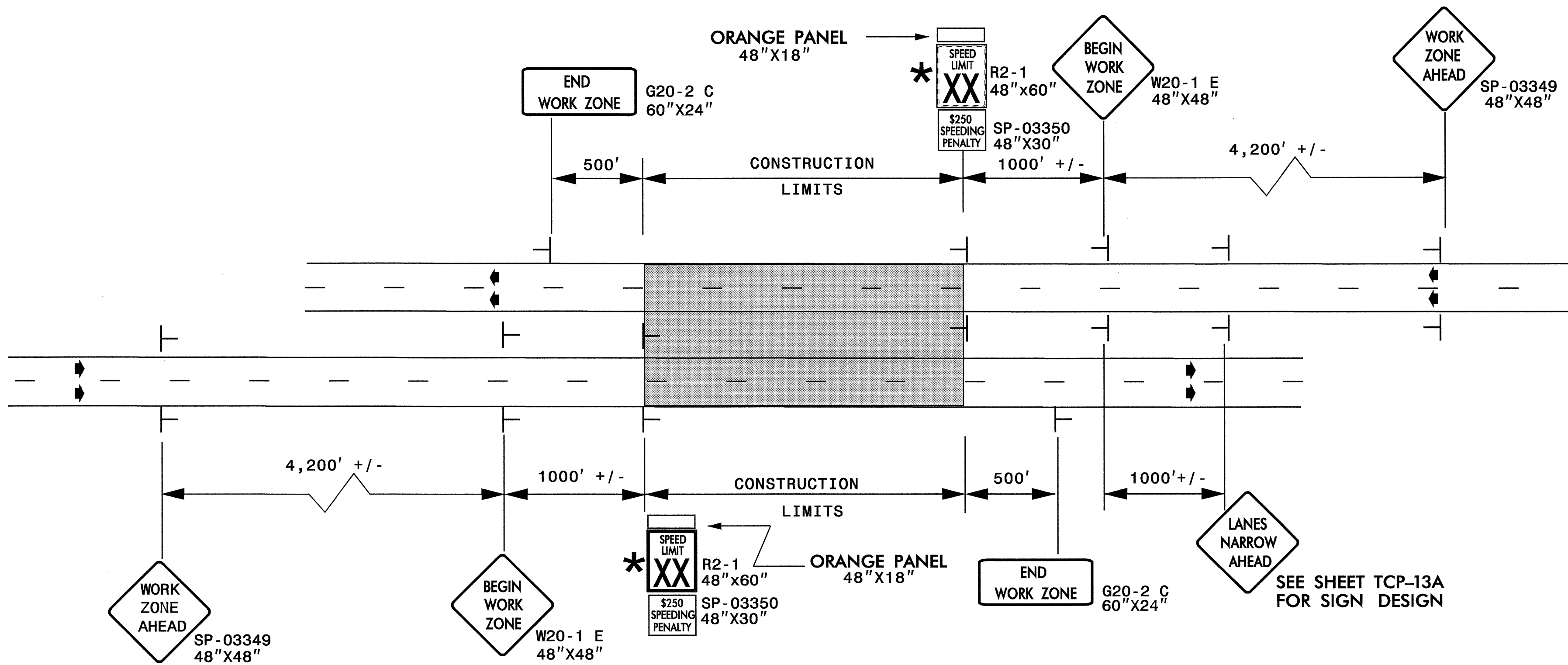


# ADVANCED WORK ZONE WARNING SIGNING FOR FREEWAYS (4 LANES OR GREATER)

PROJ. REFERENCE NO. I-4025A	SHEET NO. TCP-11
--------------------------------	---------------------

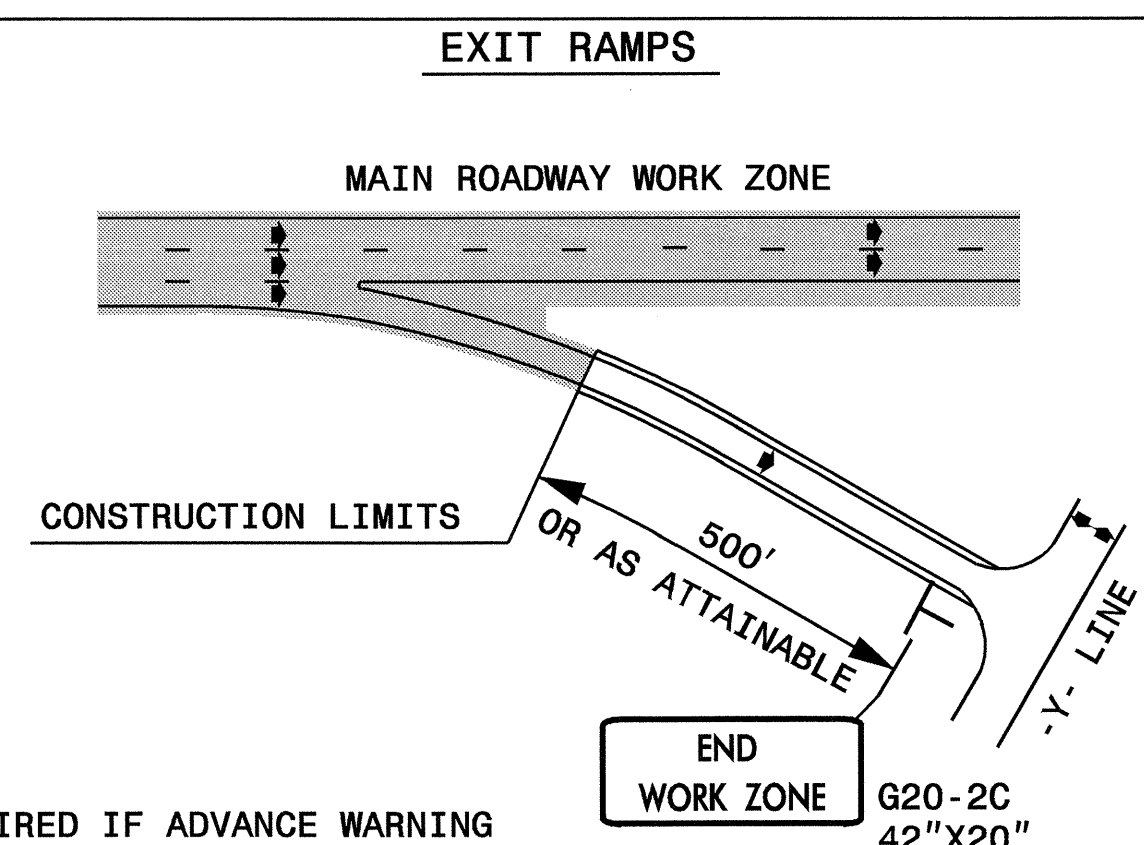
## DETAIL A



LEGEND	
	STATIONARY SIGN
➔	DIRECTION OF TRAFFIC FLOW

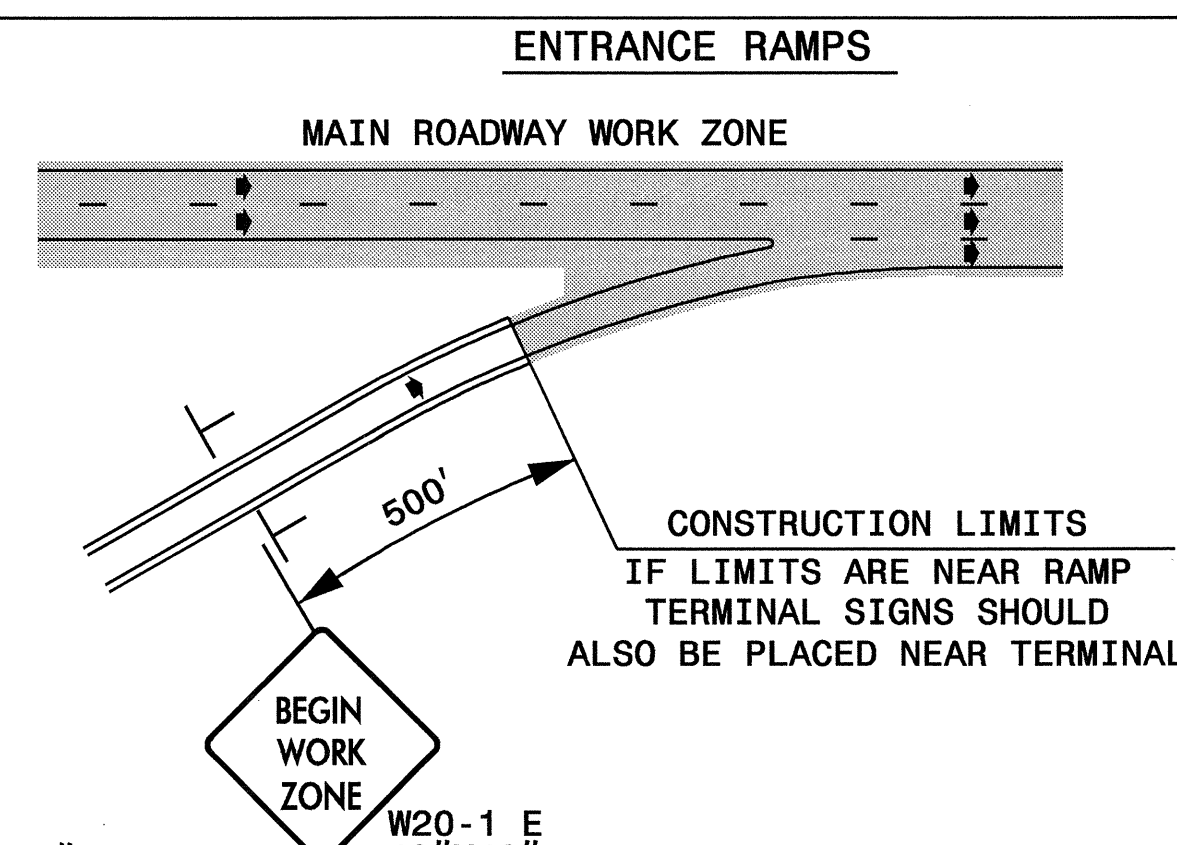
\* USE THE "\$250 SPEEDING PENALTY" SIGN, SPEED LIMIT SIGN, AND ORANGE PANEL; ONLY WHEN A "\$250 SPEEDING PENALTY" ORDINANCE HAS BEEN ISSUED BY THE REGIONAL TRAFFIC ENGINEER.

## DETAIL B



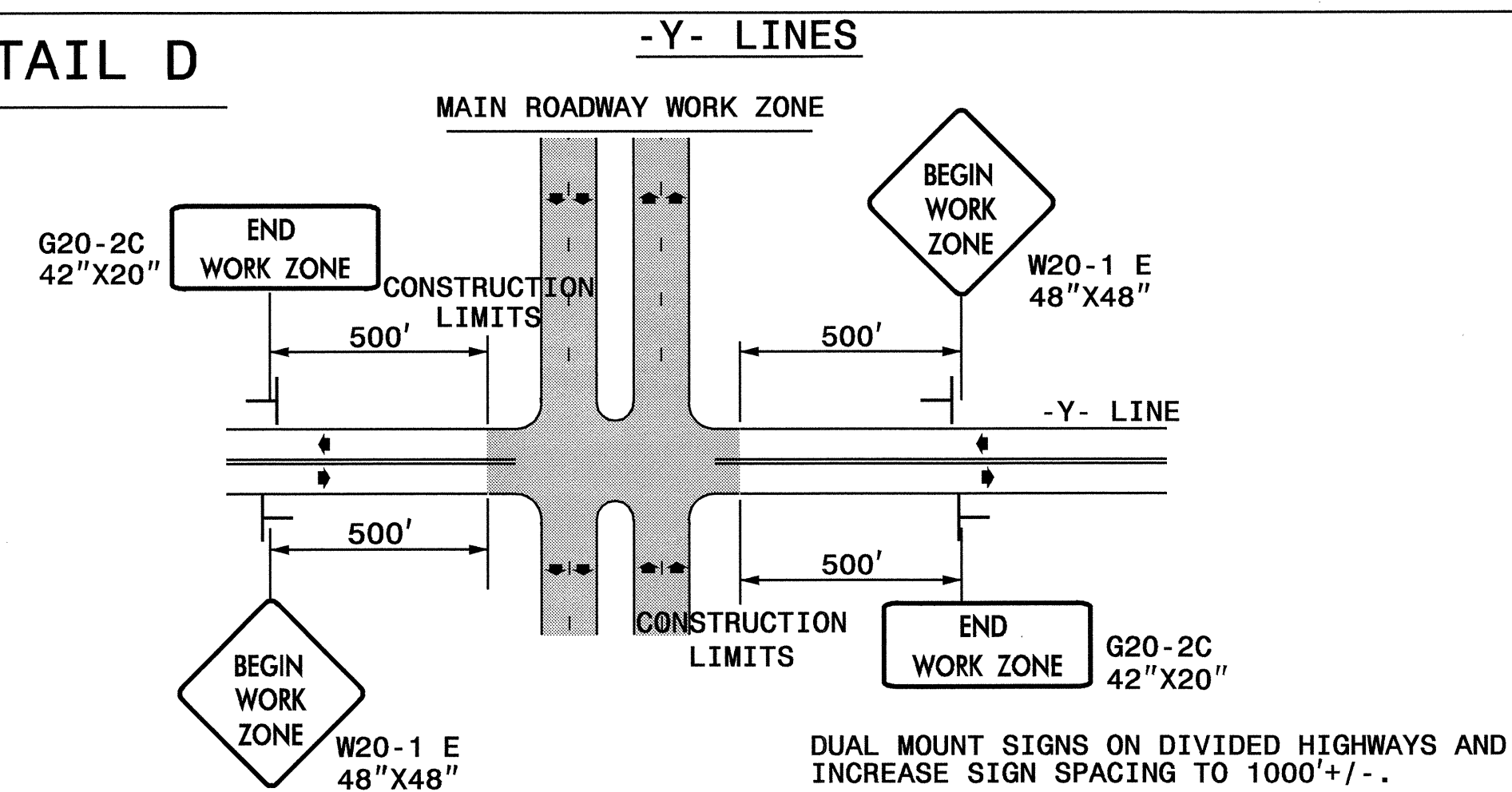
NOTE: SIGN NOT REQUIRED IF ADVANCE WARNING SIGNS HAVE BEEN PLACED ALONG -Y- LINE THAT RAMP INTERSECTS. IF CONSTRUCTION LIMITS ARE AT END OF RAMP, PLACE SIGN AT END OF RAMP.

## DETAIL C



\*\* USE THE "\$250 SPEEDING PENALTY" SUPPLEMENTAL SIGN ONLY IF AN ORDINANCE HAS BEEN ISSUED BY THE REGIONAL TRAFFIC ENGINEER.

## DETAIL D



DUAL MOUNT SIGNS ON DIVIDED HIGHWAYS AND INCREASE SIGN SPACING TO 1000'+/-.

## GENERAL NOTES

- USE TYPE I AND TYPE II SHEETING FOR ALL WORK ZONE WARNING SIGNS UNTIL THE EXISTING TYPE I AND TYPE II SHEETING INVENTORIES ARE EXHAUSTED, OTHERWISE USE TYPE VII SHEETING OR HIGHER. (STANDARD PRACTICE FOR SIGN SHEETING, S-68)
- DO NOT INSTALL ADVANCE WARNING SIGNS MORE THAN 3 DAYS PRIOR TO BEGINNING OF WORK.
- SIGNS SHOWN ARE REQUIRED FOR WORK ZONES THAT WILL REMAIN IN EFFECT OVERNIGHT. FOR SHORT-TERM DAILY MAINTENANCE TYPE OPERATIONS, THIS SIGNING APPLICATION IS OPTIONAL; MAY USE ONLY APPLICABLE ROADWAY STANDARD DRAWINGS INSTEAD. HOWEVER, IF THIS SIGNING APPLICATION IS USED, SIGNS MAY BE PORTABLE MOUNTED.
- ALL SIGN SPACING DIMENSIONS ARE APPROXIMATE, FIELD ADJUST AS NECESSARY OR AS DIRECTED.
- USE 3LB STEEL U-CHANNEL POST OR 4" X 4" WOOD POST FOR ALL WORK ZONE SIGNS. 3LB STEEL U-CHANNEL POSTS MUST MEET THE REQUIREMENTS OF STANDARD SPECIFICATION SECTION 1094-1(B), MAY BE GALVANIZED STEEL, OR MAY BE PAINTED GREEN BY THE POST MANUFACTURER. SQUARE STEEL TUBING POSTS HAVING EQUIVALENT STRENGTH OF THE 3 LB STEEL U-CHANNEL POST ARE ALSO ACCEPTABLE FOR USE. ERECT SIGNS PER ROADWAY STANDARD DRAWING 1110.01. PAYMENT FOR WOOD POSTS, 3LB STEEL U-CHANNEL AND SQUARE STEEL TUBING POSTS WITH SIGNS WILL BE MADE ACCORDING TO STANDARD SPECIFICATION "WORK ZONE SIGNS" SECTION 1110.
- WHEN NECESSARY, USE SPLICING IN ACCORDANCE WITH ROADWAY STANDARD DRAWING NO. 1110.01. REMOVE ENTIRE POST WHEN REMOVING SIGNS WITH SPLICED POSTS.
- DO NOT BACK BRACE SIGN SUPPORTS.

APPROVED:  DATE: 2/20/03	ADVANCED WORK ZONE WARNING SIGNS FOR FREEWAYS (4 LANES OR GREATER)	
	SCALE: NONE	
	DATE: 8/03	
	DWG. BY: JI	
	DESIGN BY: JI	
REVIEWED BY:	REVISIONS	CARD FILE

01-Jul-2004 07:44 n:\TCP\14025a-Tcp\_Tcp11\_freeways-4lanes-or\_greater.dgn mmanriquez AT 11/10/03