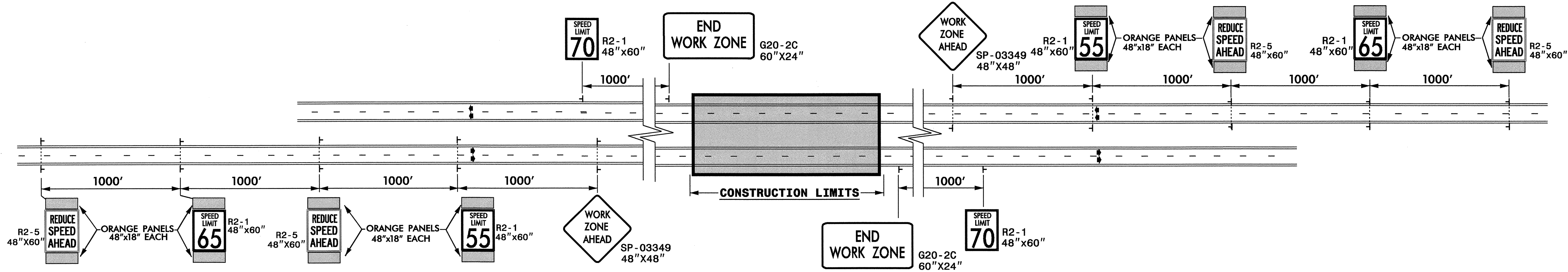


STATE OF NORTH CAROLINA
DEPT. OF TRANSPORTATION
DIVISION OF HIGHWAYS
RALEIGH, N.C.



DETAIL DRAWING FOR
WORK ZONE SIGNS
"REDUCE SPEED AHEAD SIGN"

GENERAL NOTES

- FOR UNDIVIDED AND TWO LANE-TWO WAY ROADWAYS, SIGNS ARE REQUIRED ONLY ON THE RIGHT SIDE OF THE ROADWAY.
- USE MULTIPLE "REDUCE SPEED AHEAD" SIGNS ON ROADWAYS WHEN REDUCING THE SPEED LIMIT MORE THAN 10 MPH. EXAMPLE: WHEN REDUCING THE SPEED LIMIT FROM 70 MPH TO 50 MPH THE FIRST SIGN A DRIVER SEES IS "REDUCE SPEED AHEAD" FOLLOWED BY "SPEED LIMIT 60 MPH" FOLLOWED BY "REDUCE SPEED AHEAD" FOLLOWED BY "SPEED LIMIT 50MPH".
- SEE SHEET TCP-11 AND TCP-13 FOR ALL OTHER WORK ZONE SIGNS SIZE AND SPACING OTHER THAN THE "REDUCE SPEED AHEAD" SIGN.

SHEET 1 OF 1

01-JUL-2004 07:48
n:\TCP\4025a\Fcp_Tcp14_Reduce_Speed_Ahead_Sign.dgn
mmahariquez AT TEL095141

APPROVED:	DATE: 7/98	<p align="center">DETAIL DRAWING FOR WORK ZONE SIGNS</p>	
SCALE: NONE		REVISIONS	
DATE:		7-98	1/00
DWG. BY:		10-98	5/00
DESIGN BY:		12-99	
REVIEWED BY:		CARD FILE	