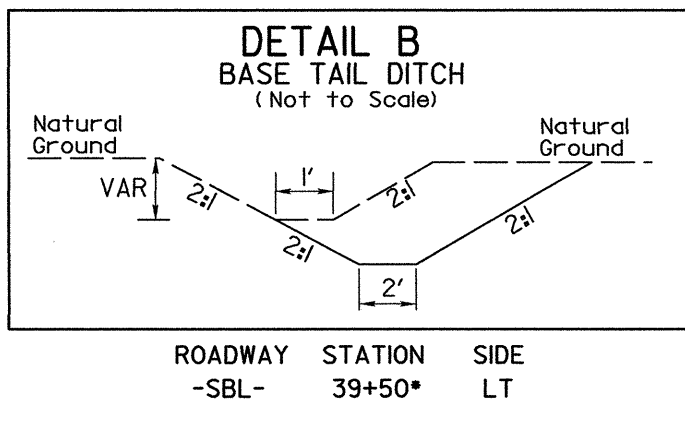
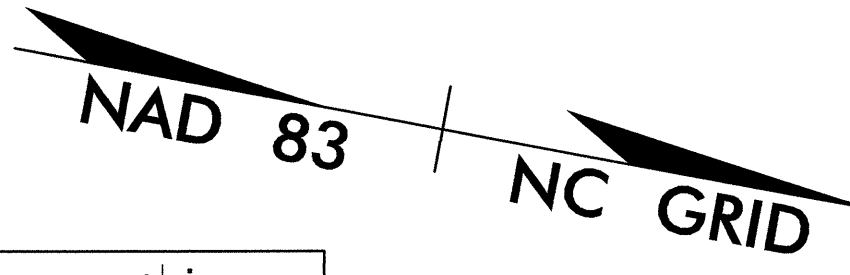


7/2/99

REVISIONS



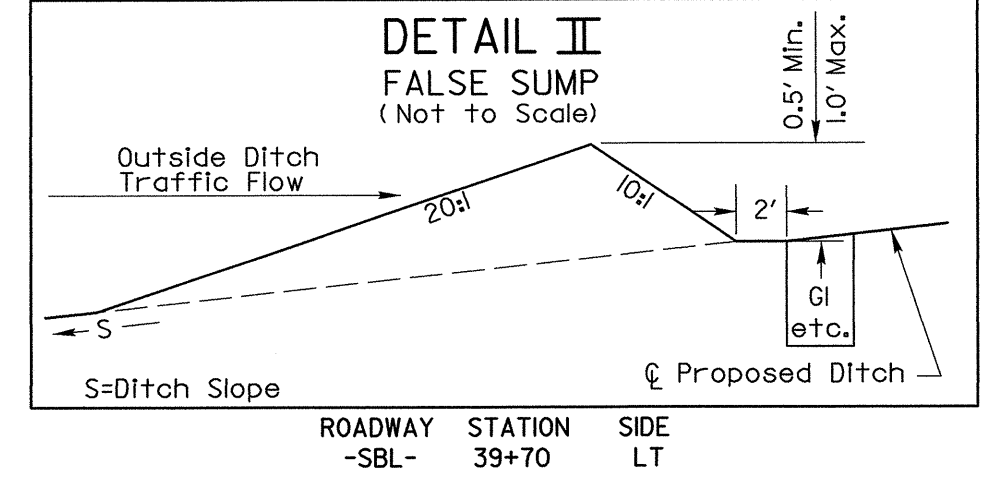
DETOUR DETAIL



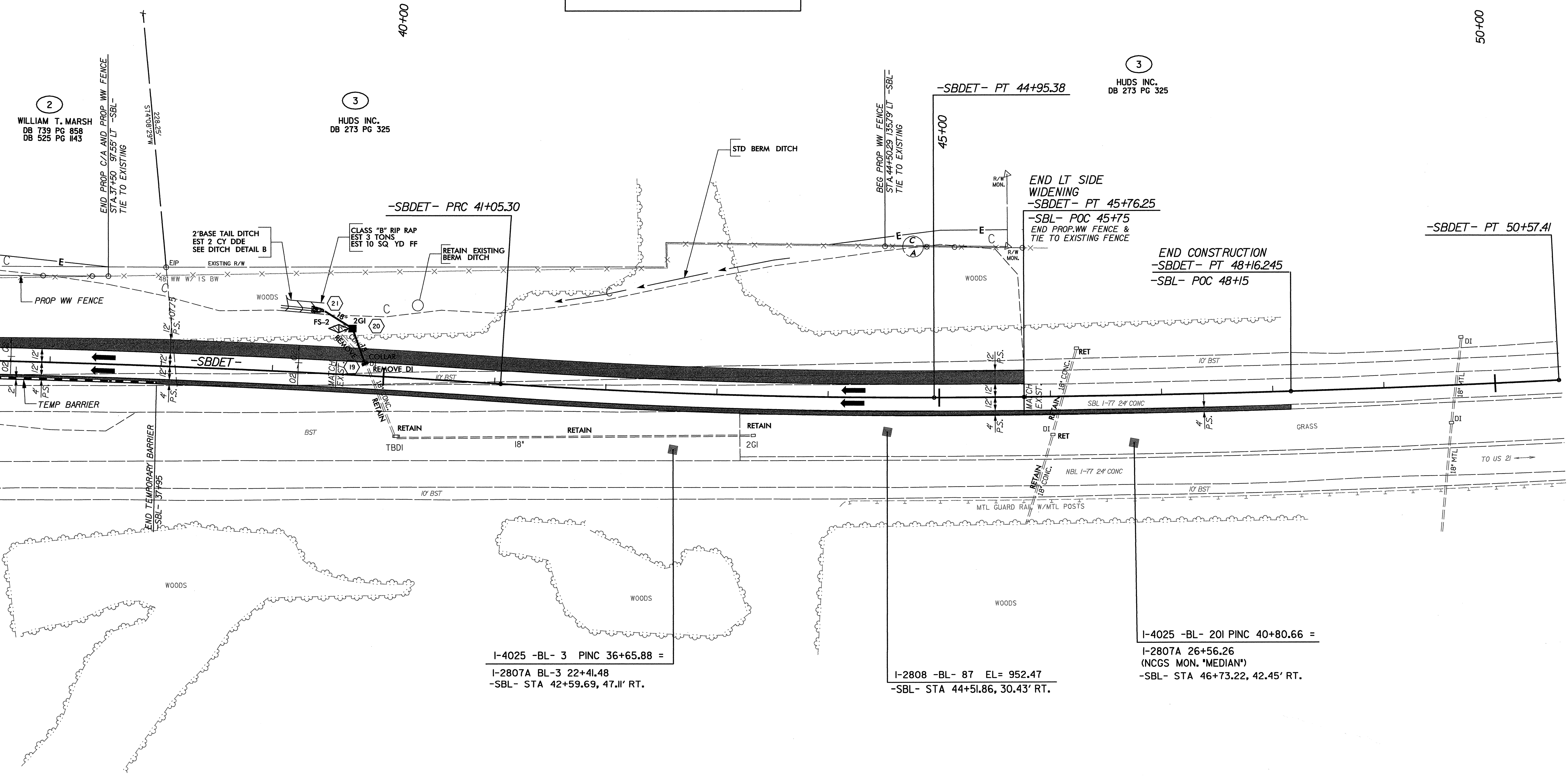
PROJECT REFERENCE NO. I-4025A	SHEET NO. 2-E
RW SHEET NO.	
ROADWAY DESIGN ENGINEER WARREN F. VANN SEAL 13747 8-26-04	HYDRAULICS ENGINEER HERBERT TURNER SEAL 021162 8-26-04

-SBDET-

PI Sta 37+24.42	PI Sta 43+00.41
$\Delta = 3' 48' 36.7''$ (RT)	$\Delta = 3' 54' 02.9''$ (LT)
$D = 0' 30' 00.0''$	$D = 1' 00' 00.0''$
$L = 762.04'$	$L = 390.08'$
$T = 381.16'$	$T = 195.12'$
$R = 11,459.16'$	$R = 5,729.58'$
SE = NC	SE = EXISTING
DS = 55 MPH	DS = 55 MPH



-MATCHLINE- STA. 36+50 SEE SHEET NO. 2-D



I-4025 -BL- 3 PINC 36+65.88 =
 I-2807A BL-3 22+41.48
 -SBL- STA 42+59.69, 47.11' RT.

I-2808 -BL- 87 EL= 952.47
 -SBL- STA 44+51.86, 30.43' RT.

I-4025 -BL- 201 PINC 40+80.66 =
 I-2807A 26+56.26
 (NCS MON. *MEDIAN*)
 -SBL- STA 46+73.22, 42.45' RT.

FOR ROADWAY PLAN, SEE SHEET 6

Plans prepared by:
KO & ASSOCIATES, P.C.
 Consulting Engineers
 1011 SCHaub DR., SUITE #202
 RALEIGH, N.C. 27606
 For Division of Highways

08/24/2004 P:\4025a_rdy_psh_det3.dgn KO & Associates, P.C.