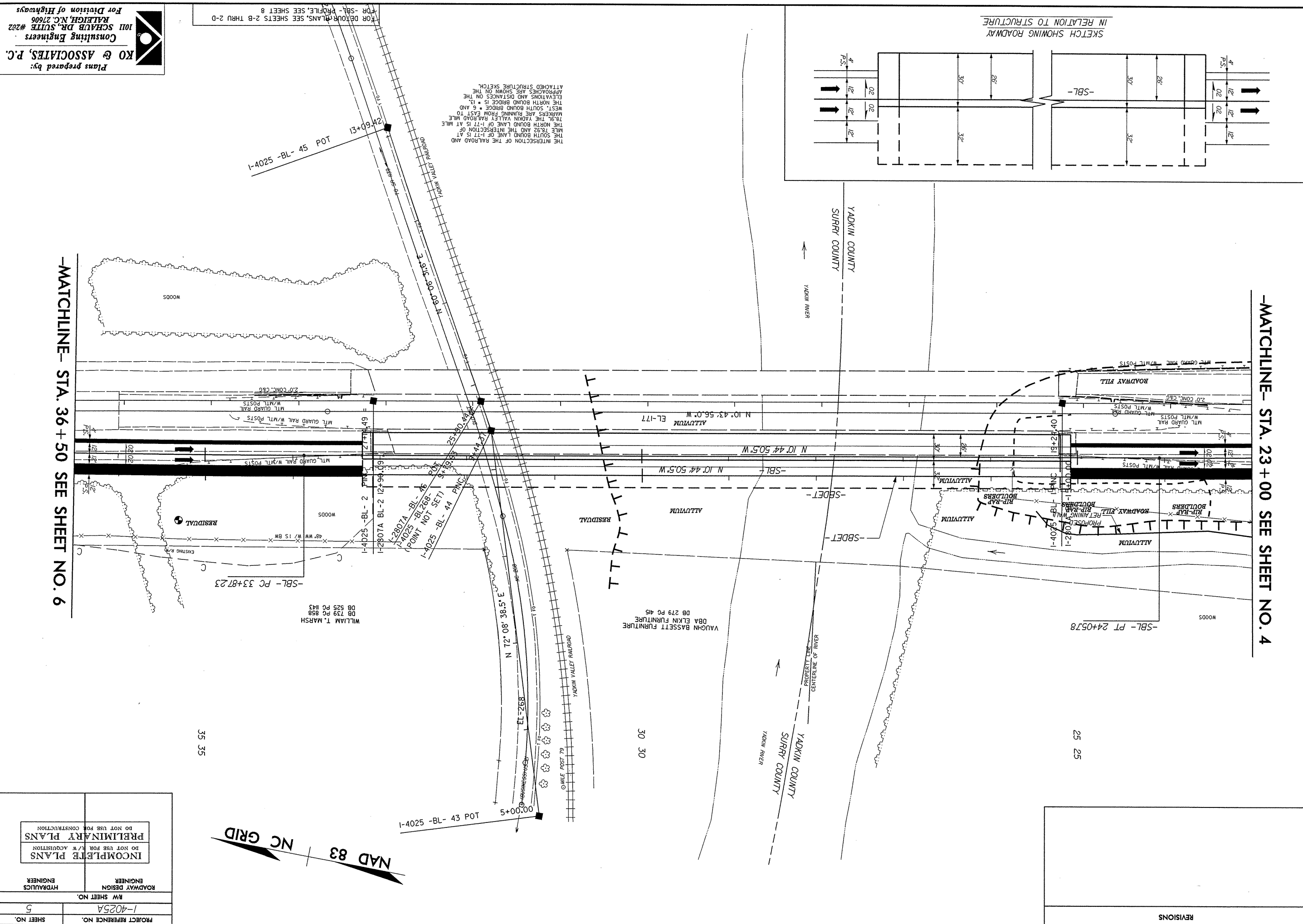
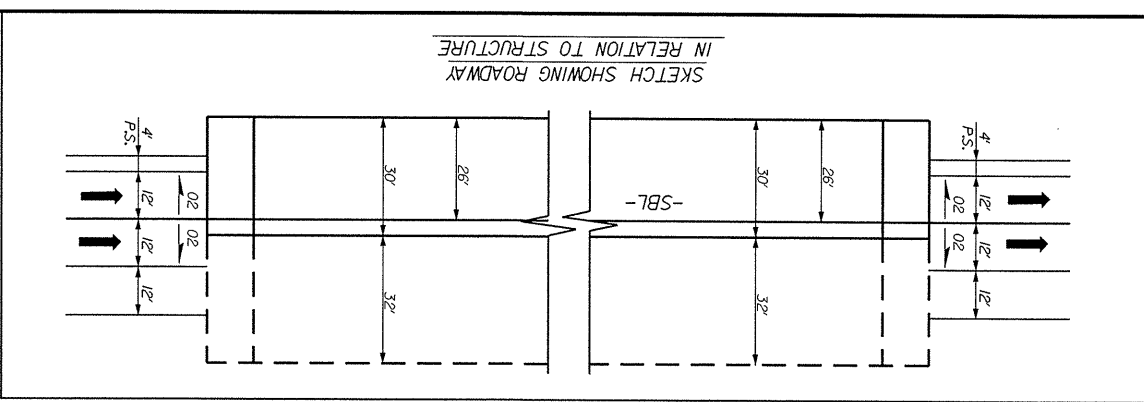


Plans prepared by:
KO & ASSOCIATES, P.C.
 Consulting Engineers
 1011 SCHAUH DR., SUITE #202
 RALEIGH, N.C. 27606
 For Division of Highways

PROJECT REFERENCE NO.	1-4025A
SHEET NO.	5
RW SHEET NO.	
ROADWAY DESIGN ENGINEER	
HYDRAULICS ENGINEER	
INCOMPLETE PLANS	DO NOT USE FOR ACQUISITION
PRELIMINARY PLANS	DO NOT USE FOR CONSTRUCTION



THE INTERSECTION OF THE RAILROAD AND THE SOUTH BOUND LANE OF I-77 IS AT MILE 78.92 AND THE INTERSECTION OF THE NORTH BOUND LANE OF I-77 IS AT MILE 78.94. THE YADKIN VALLEY RAILROAD MARKERS ARE RUNNING FROM EAST TO WEST. SOUTH BOUND BRIDGE IS # 13. THE NORTH BOUND BRIDGE IS # 14. ELEVATIONS AND DISTANCES ON THE APPROACHES ARE SHOWN ON THE ATTACHED STRUCTURE SKETCH.



7/27/99
 REVISIONS
 *****SYSTEM*****
 *****USER*****