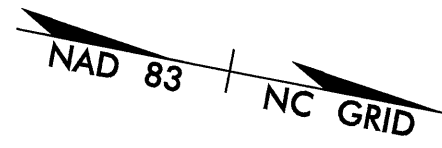


7/2/99

REVISIONS

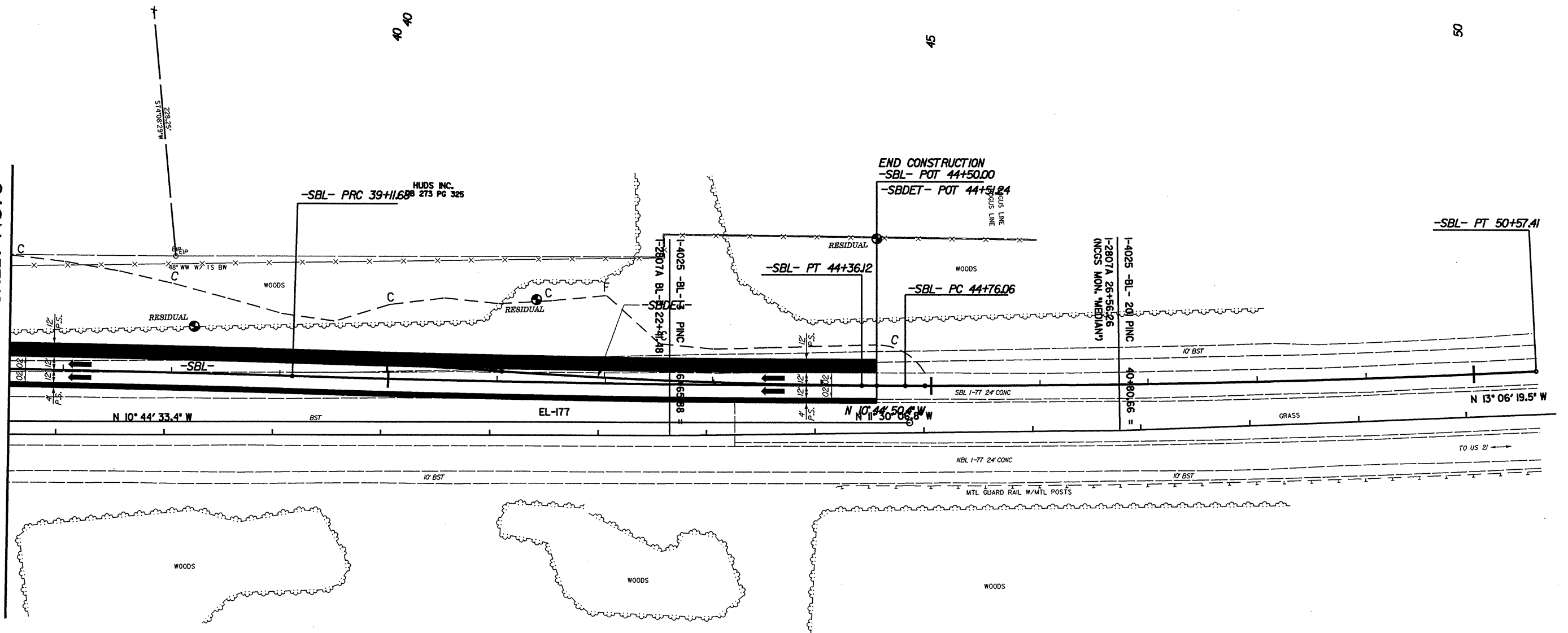
PROJECT REFERENCE NO. I-4025A	SHEET NO. 6
R/W SHEET NO.	
ROADWAY DESIGN ENGINEER	HYDRAULICS ENGINEER
<b>INCOMPLETE PLANS</b> DO NOT USE FOR R/W ACQUISITION <b>PRELIMINARY PLANS</b> DO NOT USE FOR CONSTRUCTION	



-SBL-

PI Sta 36+49.47	PI Sta 41+73.92	PI Sta 47+66.79
$\Delta = 144^{\circ} 53.3' (RT)$	$\Delta = 144^{\circ} 53.3' (LT)$	$\Delta = 254^{\circ} 55.4' (LT)$
D = 0' 20' 00.0"	D = 0' 20' 00.0"	D = 0' 30' 05.4"
L = 524.44'	L = 524.44'	L = 581.35'
T = 262.24'	T = 262.24'	T = 290.74'
R = 17,188.73'	R = 17,188.77'	R = 11,425.16'

-MATCHLINE- STA. 36 + 50 SEE SHEET NO. 5



I:\7-SEP-2003 10:30  
 D:\Project\I-4025a\Roadway\Proj\14025a\_p6\_psh.dgn  
 geo AT

FOR DETOUR PLANS, SEE SHEETS 2-B THRU 2-D  
 FOR -SBL- PROFILE, SEE SHEET 9

Plans prepared by:  
**KO & ASSOCIATES, P.C.**  
 Consulting Engineers  
 1011 SCHaub DR., SUITE #202  
 RALEIGH, N.C. 27606  
 For Division of Highways