

NOTES

THE CONTRACTOR SHALL SUBMIT FOR ACCEPTANCE, PRIOR TO PURCHASE, A PLAN FOR THE PVC DRAINAGE SYSTEM, INCLUDING ATTACHMENTS TO THE BRIDGE SUPERSTRUCTURE.

THE CONTRACTOR SHALL BE RESPONSIBLE FOR DETERMINING THE HORIZONTAL AND VERTICAL ALIGNMENT OF THE PVC DRAINAGE SYSTEM USING NECESSARY FITTINGS, ELBOWS, TEES, AND WYES TO PROVIDE A CONTINUOUS DRAINAGE SYSTEM.

DRAINAGE SYSTEM WILL BE PAID FOR UNDER THE PAY ITEM "STRUCTURE DRAINAGE SYSTEM".

FOR "STRUCTURE DRAINAGE SYSTEM", SEE SPECIAL PROVISIONS.

THE CONTRACTOR SHALL DETERMINE THE QUANTITY OF FITTINGS, PIPE LENGTHS, GUIDES, AND ATTACHMENTS REQUIRED TO CARRY THE WATER FROM THE DECK DRAINS TO THE OUTLETS.

BOLTS, NUTS, AND WASHERS SHALL BE HIGH STRENGTH AND GALVANIZED IN ACCORDANCE WITH THE STANDARD SPECIFICATIONS.

CONCRETE INSERTS SHALL BE OF AN APPROVED GALVANIZED TYPE HAVING A MINIMUM WORKING LOAD TENSION CAPACITY OF 4.2 KIPS.

IN LIEU OF CASTING INSERTS INTO THE DECK, RODS MAY BE ADHESIVELY ANCHORED TO THE DECK. FOR ADHESIVELY ANCHORED ANCHOR BOLTS OR DOWELS, SEE SPECIAL PROVISIONS.

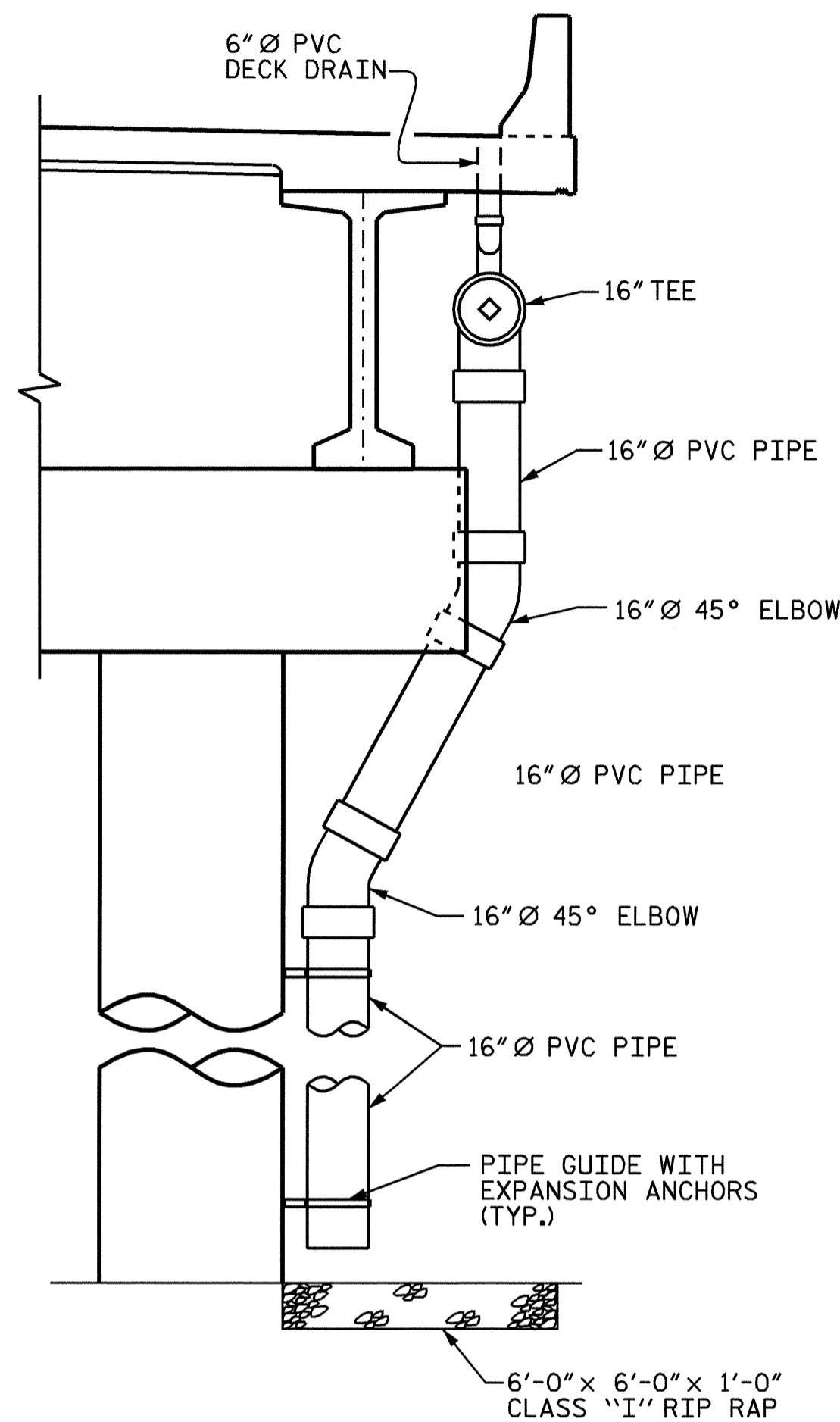
PIPE AND FITTINGS SHALL BE PVC, SDR 35, ASTM D 3034.

FITTING JOINTS SHALL BE SOLVENT CEMENT TYPE.

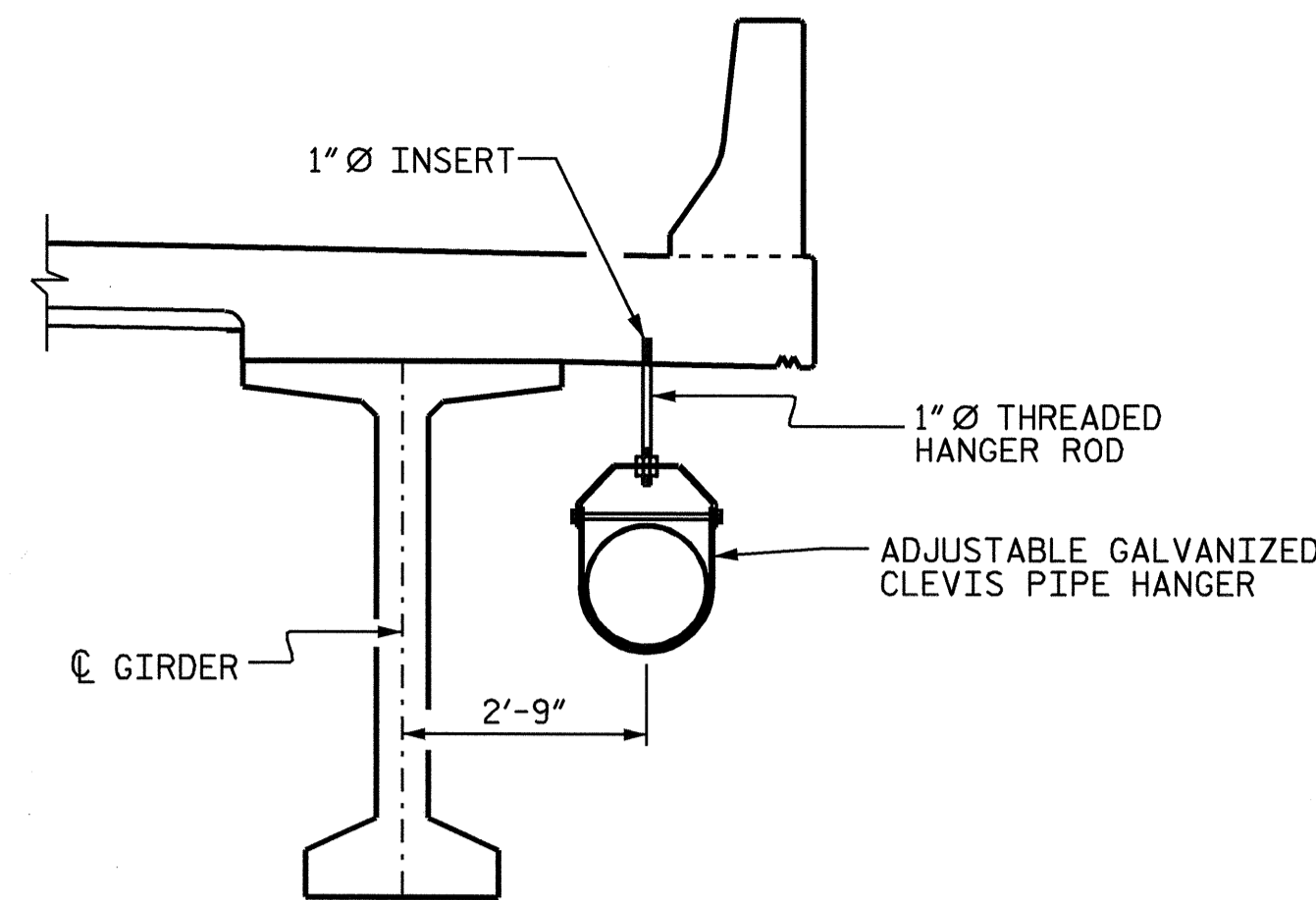
PIPE JOINTS SHALL BE ELASTOMERIC TYPE.

A 6'-0" X 6'-0" PAD OF CLASS I RIP RAP WITH FILTER FABRIC SHALL BE LOCATED UNDER THE STRUCTURE DRAINAGE SYSTEM OUTLETS. THE COST OF THESE RIP RAP PADS AND THEIR PLACEMENT SHALL BE PAID FOR IN THE "STRUCTURE DRAINAGE SYSTEM" PAY ITEM.

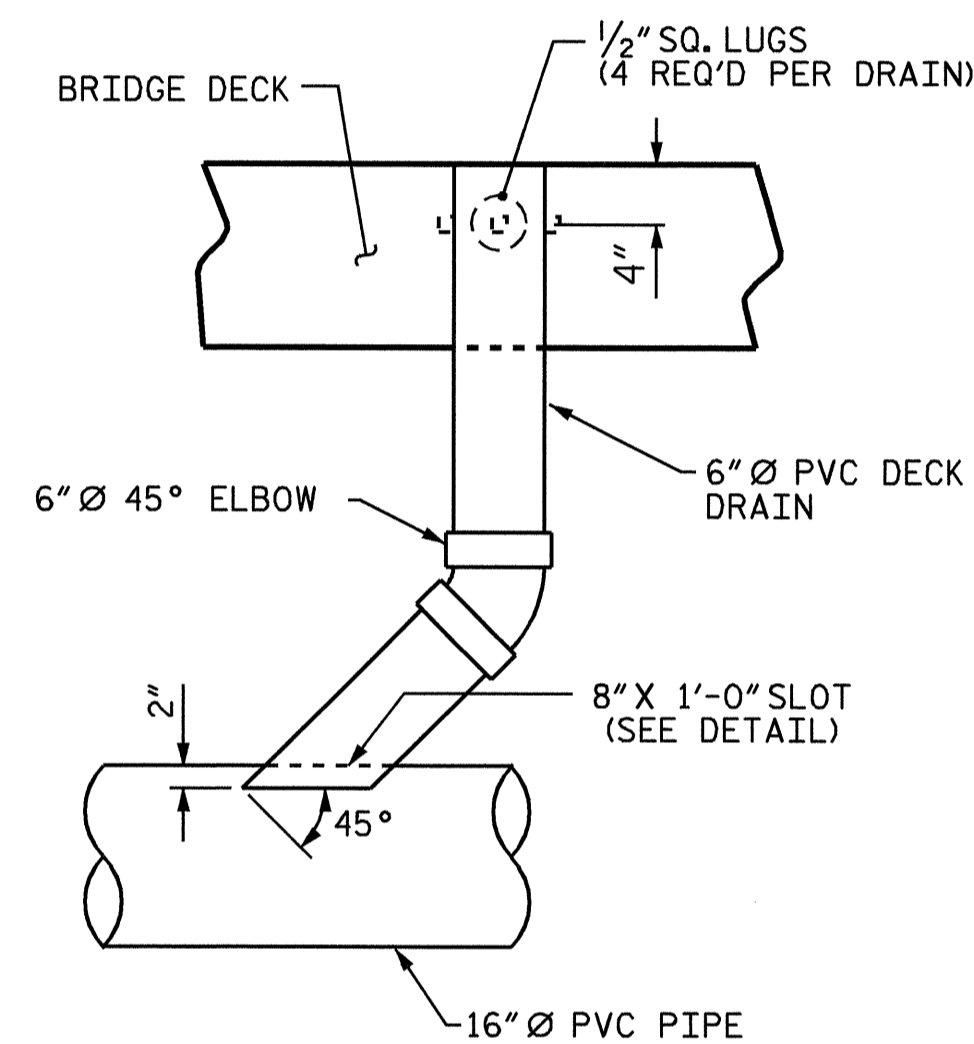
DRAINAGE SYSTEM SHALL BE PLACED TO PROVIDE A MINIMUM SLOPE OF -5% TOWARDS OUTLET.



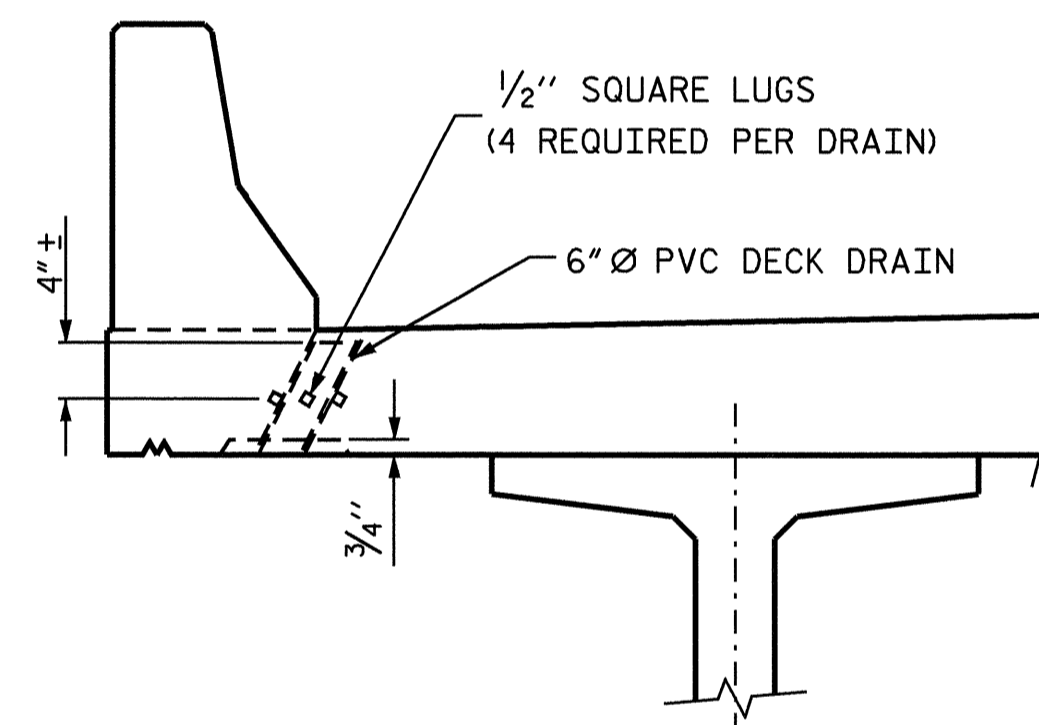
ELEVATION A-A



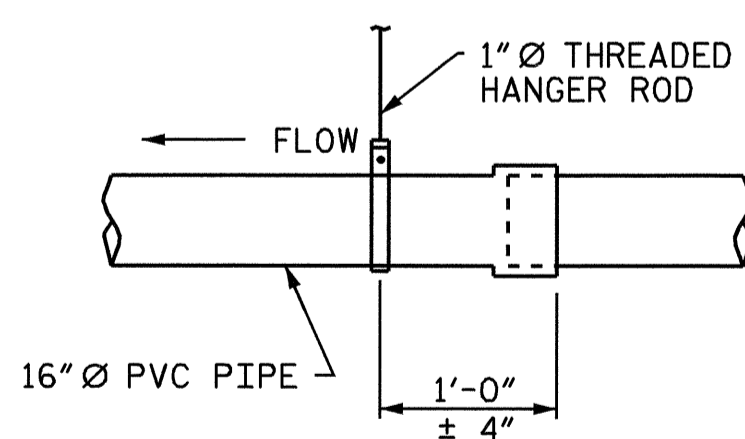
SECTION THRU DRAINAGE SYSTEM AT TYPICAL HANGER



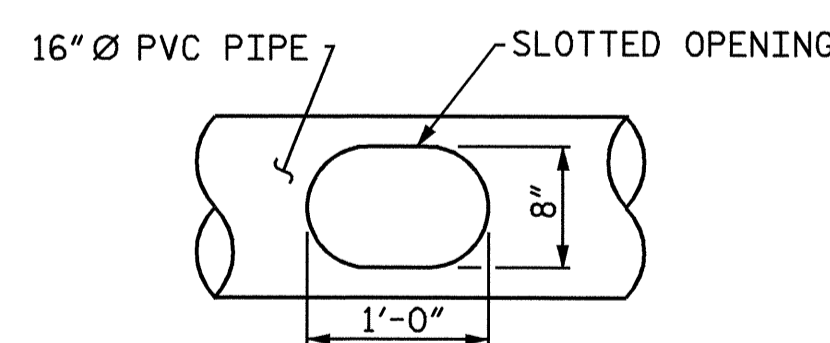
ELEVATION VIEW OF DECK DRAIN AND DRAIN LINE INTERSECTION



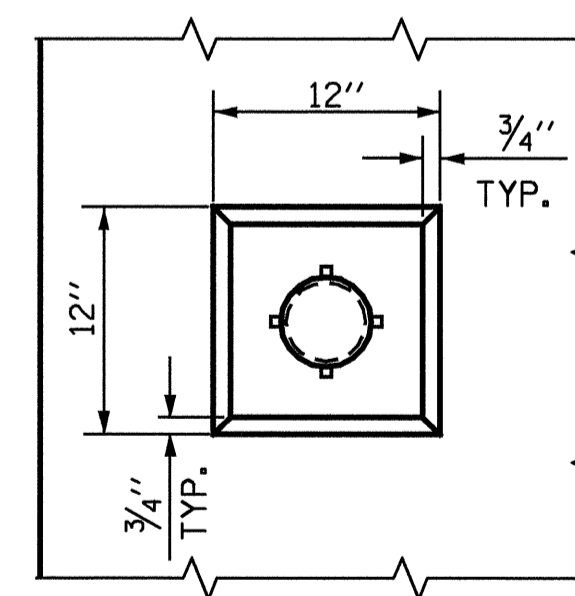
ELEVATION



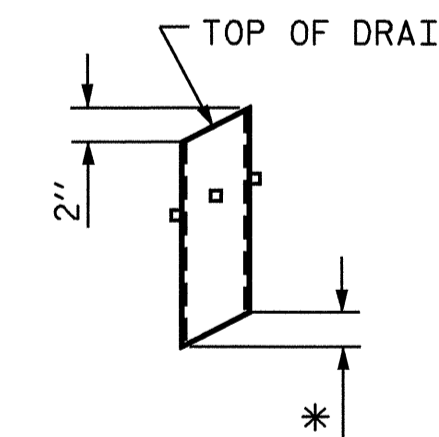
DETAIL 'A'



SLOT DETAIL



PLAN OF RECESS



* TO BE SET TO MATCH SLOPE OF BOTTOM OF OVERHANG (88 DRAINS REQUIRED)

PIPE DETAIL

DRAIN DETAILS (NOT CONNECTED TO DRAINAGE SYSTEM)

TOP OF FLOOR DRAINS TO BE SET 3/8" BELOW SURFACE OF SLAB.
 4 - 1/2" SQUARE LUGS TO BE GLUED TO THE P.V.C. PLASTIC PIPE AT EQUAL SPACES AROUND THE PIPE DRAIN APPROXIMATELY 4" FROM THE TOP OF THE PIPE.
 THE 6" Ø PVC DECK DRAIN AND FITTINGS SHALL BE SCHEDULE 40 AND CONFORM TO ASTM D1785.



PROJECT NO. I-4025A
YADKIN - SURRY COUNTY
 STATION: 28+95.00 -SBL-

SHEET 3 OF 3

STATE OF NORTH CAROLINA
 DEPARTMENT OF TRANSPORTATION
 RALEIGH

**SUPERSTRUCTURE
 STRUCTURE
 DRAINAGE SYSTEM**

REVISIONS						SHEET NO.
NO.	BY:	DATE:	NO.	BY:	DATE:	TOTAL SHEETS
1			3			
2			4			

DRAWN BY : T.A. WALTER DATE : 6/7/2004
 CHECKED BY : M.A. ALLEN DATE : 8/4/2004