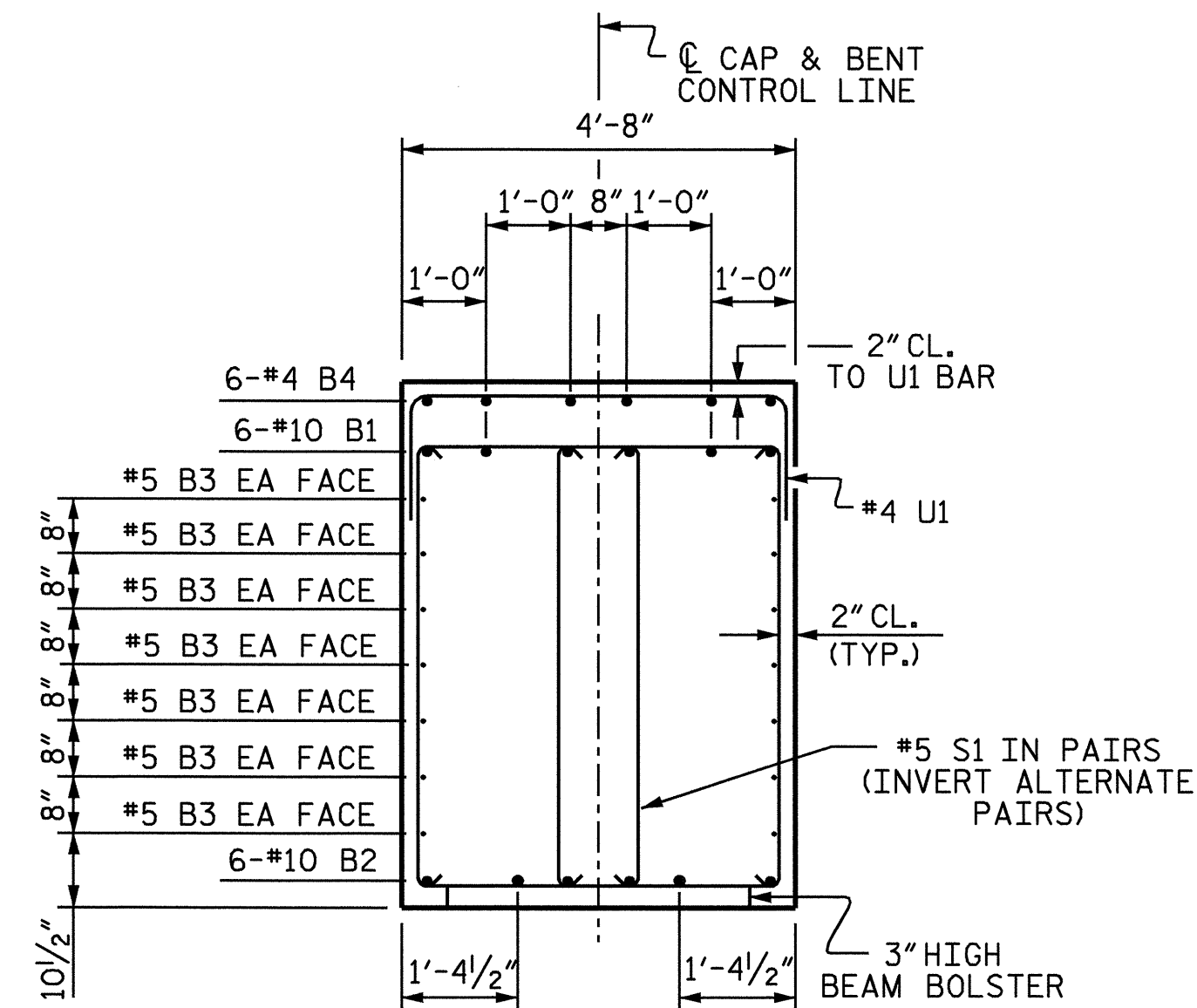
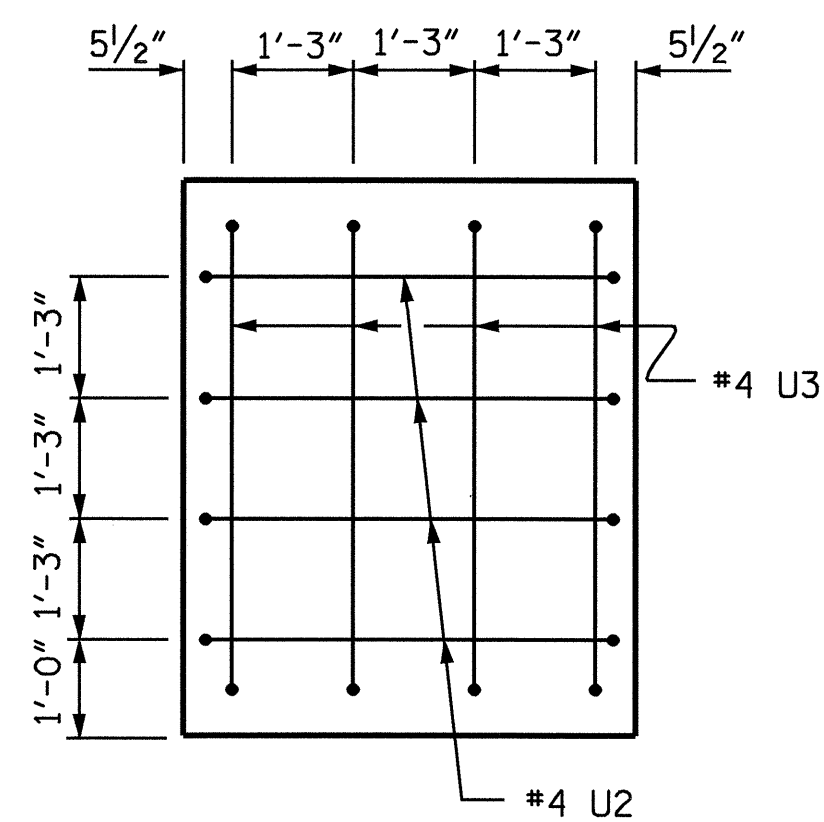


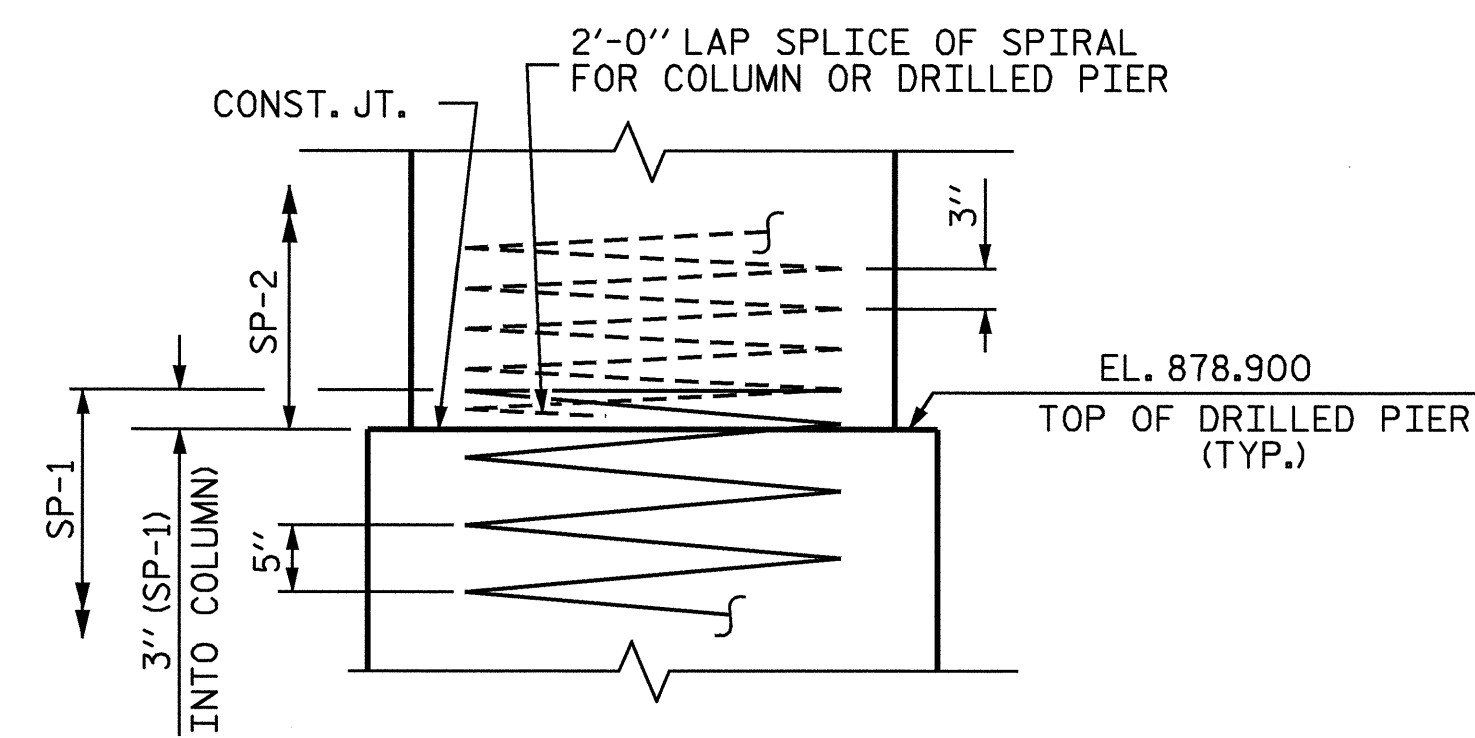
SECTION A-A



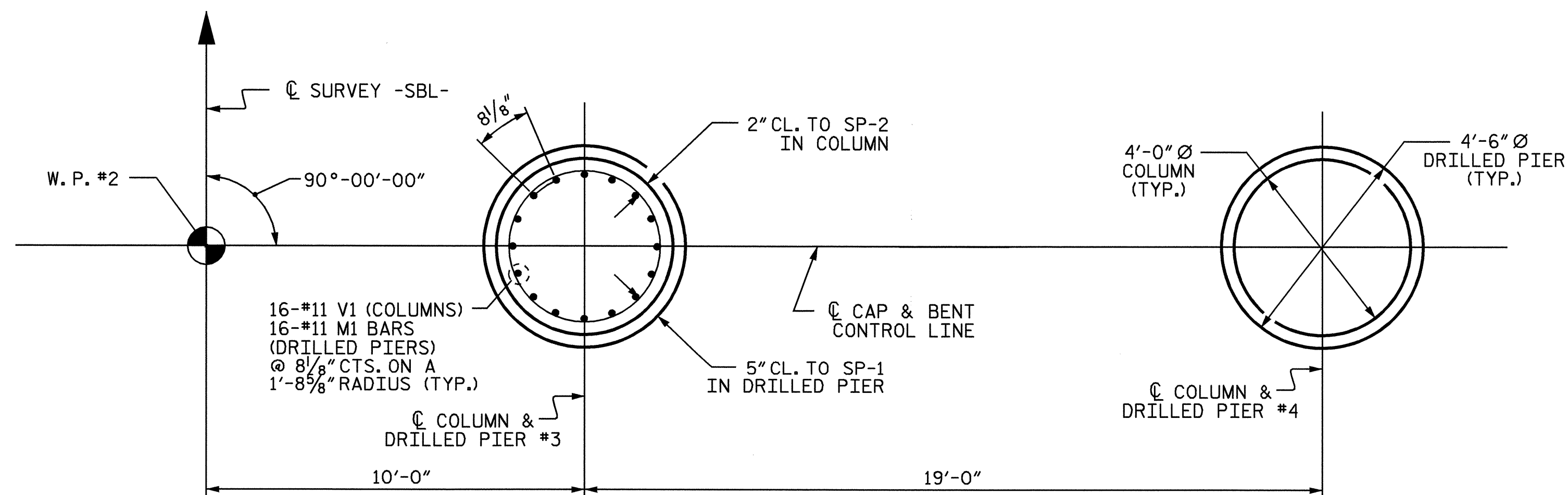
SECTION B-B



RIGHT END VIEW



CONSTRUCTION JOINT DETAIL



PLAN OF COLUMNS AND DRILLED PIERS

DIMENSIONS AND REINFORCING STEEL SHOWN ARE TYPICAL FOR EACH DRILLED PIER

BAR TYPES						BILL OF MATERIAL							
						BENT 1 STAGE II							
BAR	NO.	SIZE	TYPE	LENGTH	WEIGHT	BAR	NO.	SIZE	TYPE	LENGTH	WEIGHT		
B1	6	#10		40'-2"	1037	B1	6	#10	STR	38'-10"	1003		
B2	6	#10	STR	38'-10"	567	B3	14	#5	STR	17'-9"	71		
B3	14	#5	STR	38'-10"	567	B4	6	#4	STR	17'-9"	71		
B4	6	#4	STR	17'-9"	71	M1	32	#11	STR	50'-11"	8657		
M1	32	#11	STR	50'-11"	8657	S1	50	#5	2	14'-4"	747		
S1	50	#5	2	14'-4"	747	U1	32	#4	3	7'-4"	157		
U1	32	#4	3	7'-4"	157	U2	4	#4	3	7'-1"	19		
U2	4	#4	3	7'-1"	19	U3	4	#4	3	7'-11"	21		
U3	4	#4	3	7'-11"	21	V1	32	#11	1	23'-5"	3981		
V1	32	#11	1	23'-5"	3981	REINFORCING STEEL					LBS.	16260	
SP-1					2	**	5	1147'-9"	2394				
SP-2					2	**	4	945'-6"	1263				
TOTAL SPIRAL COLUMN REINFORCING STEEL					LBS.	3657	CLASS 'A' CONCRETE BREAKDOWN						
POUR #2 (COLUMNS)					CU.YD.	18.4	POUR #3 (CAP)					CU.YD.	40.6
TOTAL CONCRETE					CU.YD.	59.0	DRILLED PIER QUANTITIES						
DRILLED PIER CONCRETE					CU.YD.	48.3	4'-6" Ø DRILLED PIER NOT IN SOIL					13.50	
4'-6" Ø DRILLED PIER IN SOIL					LIN. FT.	68.50	CSL TUBES					LIN. FT.	348.00

ALL BAR DIMENSIONS ARE OUT TO OUT.
 ** THE SP-1 SPIRAL REINFORCING STEEL SHALL BE W31 OR D-31 COLD DRAWN WIRE OR #5 PLAIN OR DEFORMED BAR.
 *** THE SP-2 SPIRAL REINFORCING STEEL SHALL BE W20 OR D-20 COLD DRAWN WIRE OR #4 PLAIN OR DEFORMED BAR.

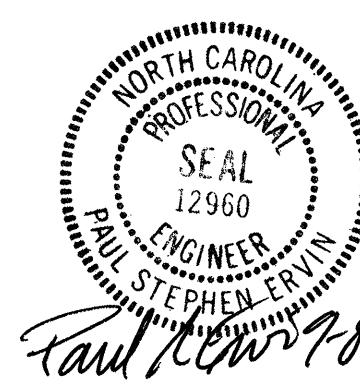
PROJECT NO. I-4025A
 YADKIN-SURRY COUNTY
 STATION: 28+95.00-SBL-

SHEET 2 OF 2

STATE OF NORTH CAROLINA
 DEPARTMENT OF TRANSPORTATION
 RALEIGH

SUBSTRUCTURE

BENT 1
 STAGE II



REVISIONS					SHEET NO.
NO.	BY:	DATE:	NO.	BY:	DATE:
1			3		
2			4		

DRAWN BY: B.N.BARODAWALA DATE: 7-12-04
 CHECKED BY: P.S.ERVIN DATE: 8-17-04