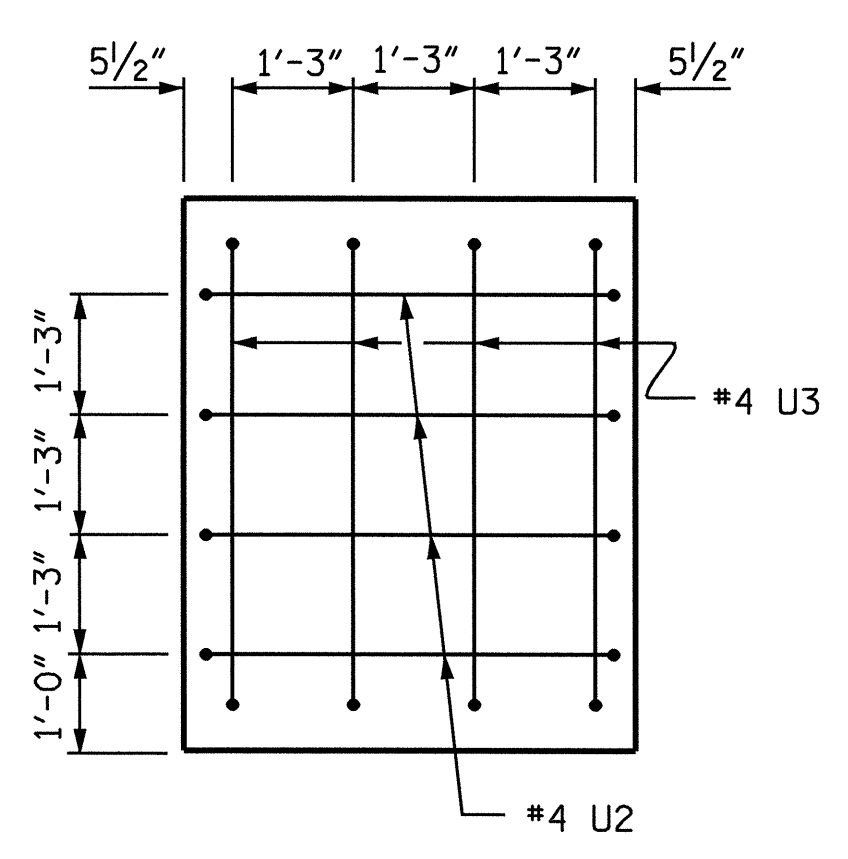
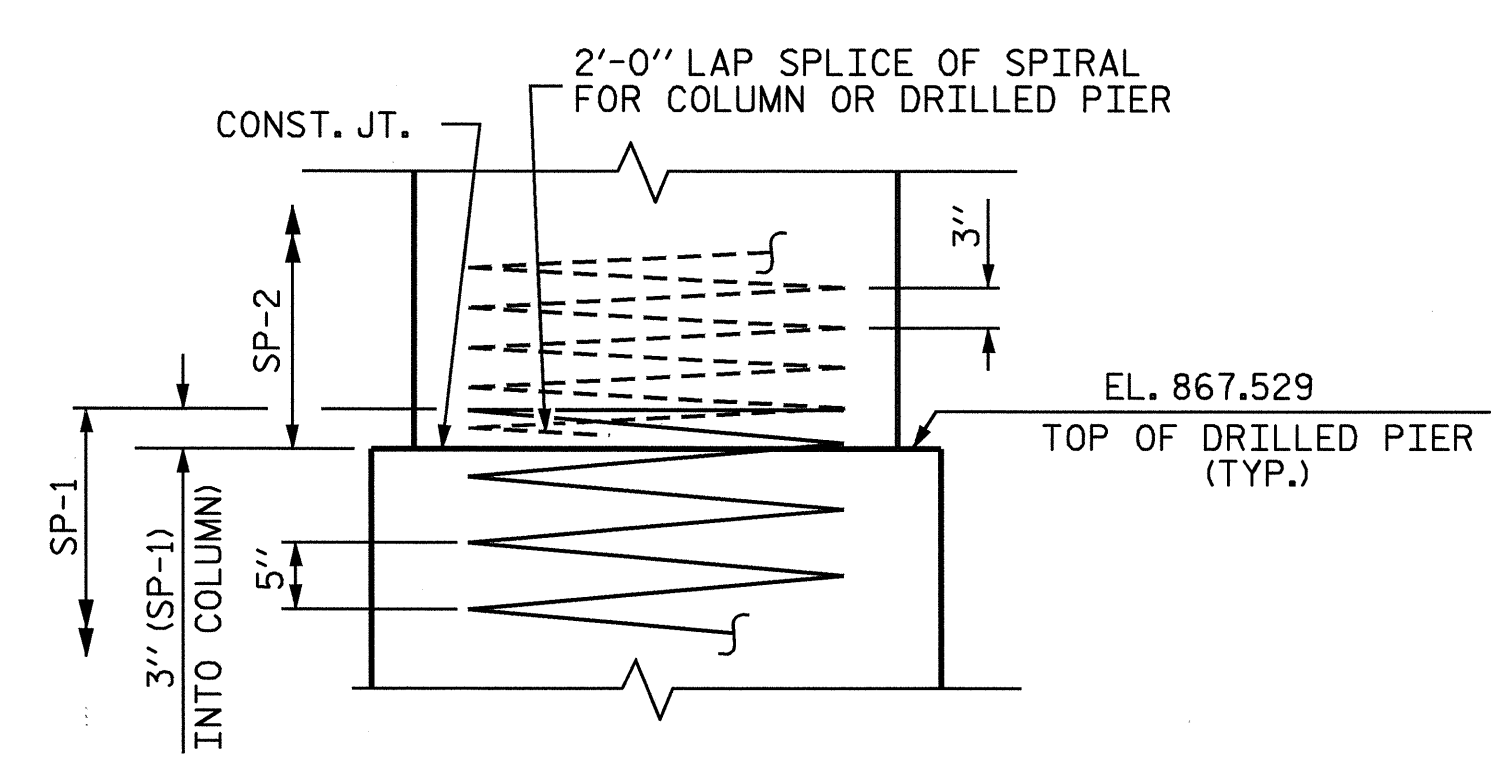


SECTION A-A

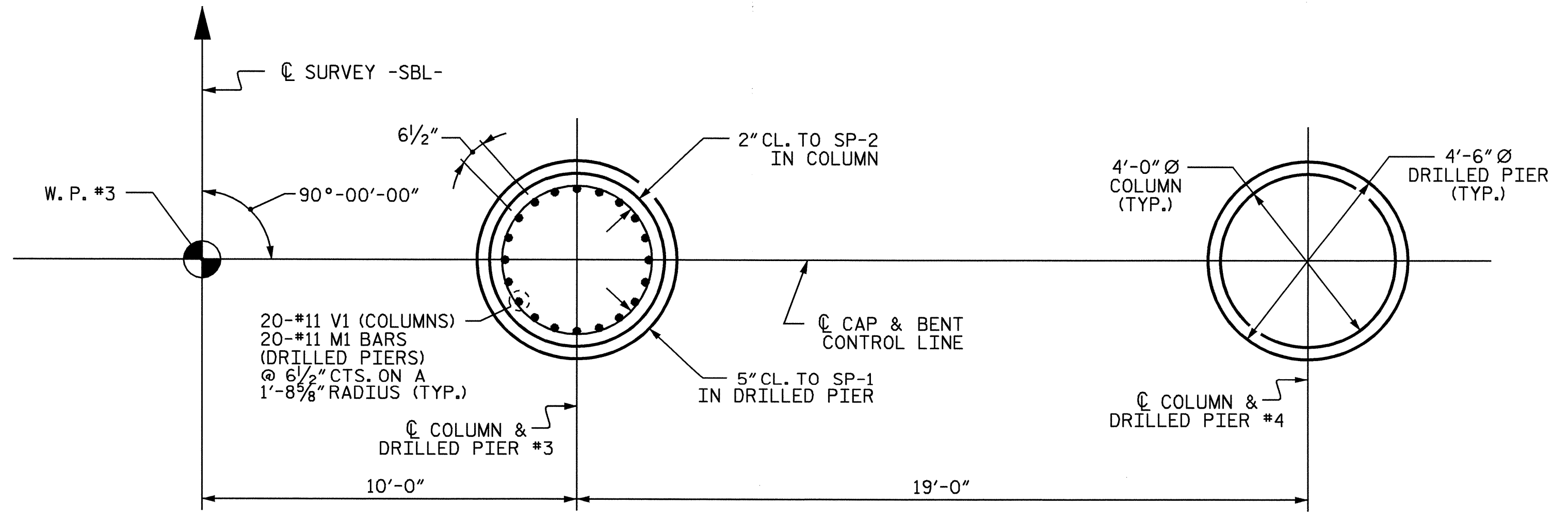
SECTION B-B



RIGHT END VIEW



CONSTRUCTION JOINT DETAIL



PLAN OF COLUMNS AND DRILLED PIERS

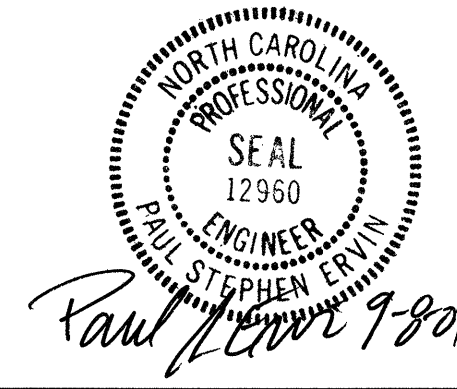
DIMENSIONS AND REINFORCING STEEL SHOWN ARE TYPICAL FOR EACH DRILLED PIER

BAR TYPES					BILL OF MATERIAL					
BENT 2 STAGE II										
BAR	NO.	SIZE	TYPE	LENGTH	WEIGHT					
B1	6	#10		40'-2"	1037					
B2	6	#10	STR	38'-10"	1003					
B3	14	#5	STR	38'-10"	567					
B4	6	#4	STR	17'-9"	71					
M1	40	#11	STR	39'-8"	8430					
S1	50	#5	2	14'-4"	747					
U1	32	#4	3	7'-4"	157					
U2	4	#4	3	7'-1"	19					
U3	4	#4	3	7'-11"	21					
V1	40	#11	1	35'-11"	7633					
REINFORCING STEEL					LBS.	19685				
SP-1	2	**	5	840'-11"	1754					
SP-2	2	***	4	1515'-1"	2024					
TOTAL SPIRAL COLUMN REINFORCING STEEL					LBS.	3778				
CLASS 'A' CONCRETE BREAKDOWN										
POUR #2 (COLUMNS)				CU.YD.	30.0					
POUR #3 (CAP)				CU.YD.	40.6					
TOTAL CONCRETE					CU.YD.	70.6				
DRILLED PIER QUANTITIES										
DRILLED PIER CONCRETE										
POUR #1 (DRILLED PIERS)				CU.YD.	35.0					
4'-6" Ø DRILLED PIER NOT IN SOIL				LIN. FT.	24.00					
4'-6" Ø DRILLED PIER IN SOIL				LIN. FT.	35.50					
PERMANENT STEEL CASING FOR 4'-6" Ø DRILLED PIER				LIN. FT.	25.06					
CSL TUBES				LIN. FT.	258.00					

ALL BAR DIMENSIONS ARE OUT TO OUT.
 * THE SP-1 SPIRAL REINFORCING STEEL SHALL BE W31 OR D-31 COLD DRAWN WIRE OR #5 PLAIN OR DEFORMED BAR.
 ** THE SP-2 SPIRAL REINFORCING STEEL SHALL BE W20 OR D-20 COLD DRAWN WIRE OR #4 PLAIN OR DEFORMED BAR.

PROJECT NO. I-4025A
YADKIN-SURRY COUNTY
 STATION: 28+95.00-SBL-
 SHEET 2 OF 2

STATE OF NORTH CAROLINA
 DEPARTMENT OF TRANSPORTATION
 RALEIGH
 SUBSTRUCTURE
 BENT 2
 STAGE II



REVISIONS						SHEET NO.
NO.	BY:	DATE:	NO.	BY:	DATE:	TOTAL SHEETS
1			3			5-51
2			4			78

DRAWN BY : B.N.BARODAWALA DATE : 6-24-04
 CHECKED BY : P.S.ERVIN DATE : 8-17-04