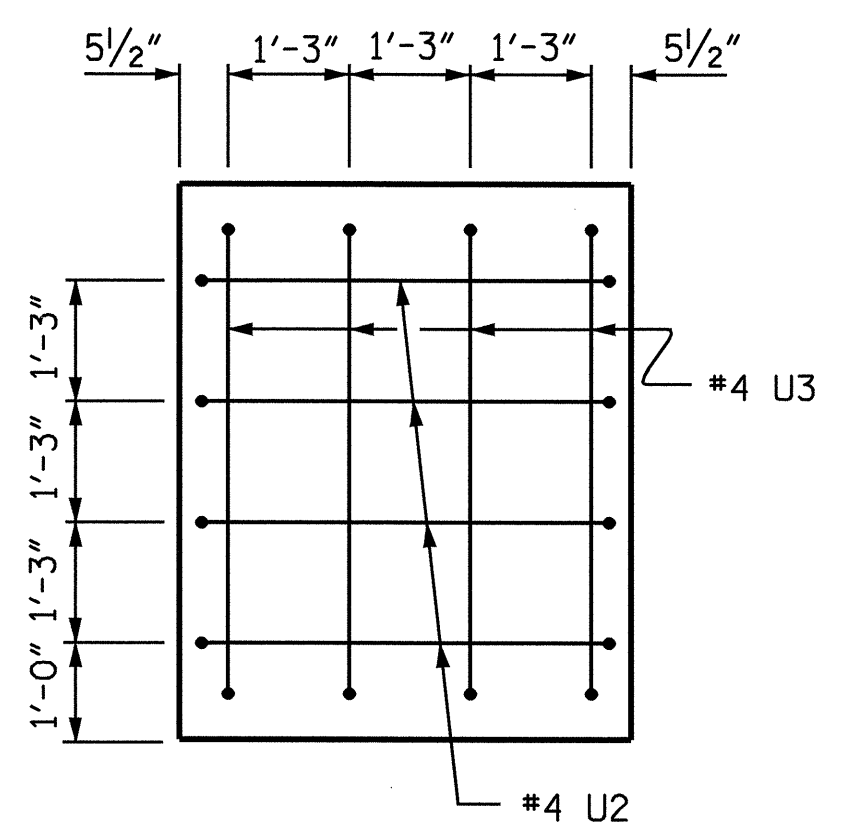
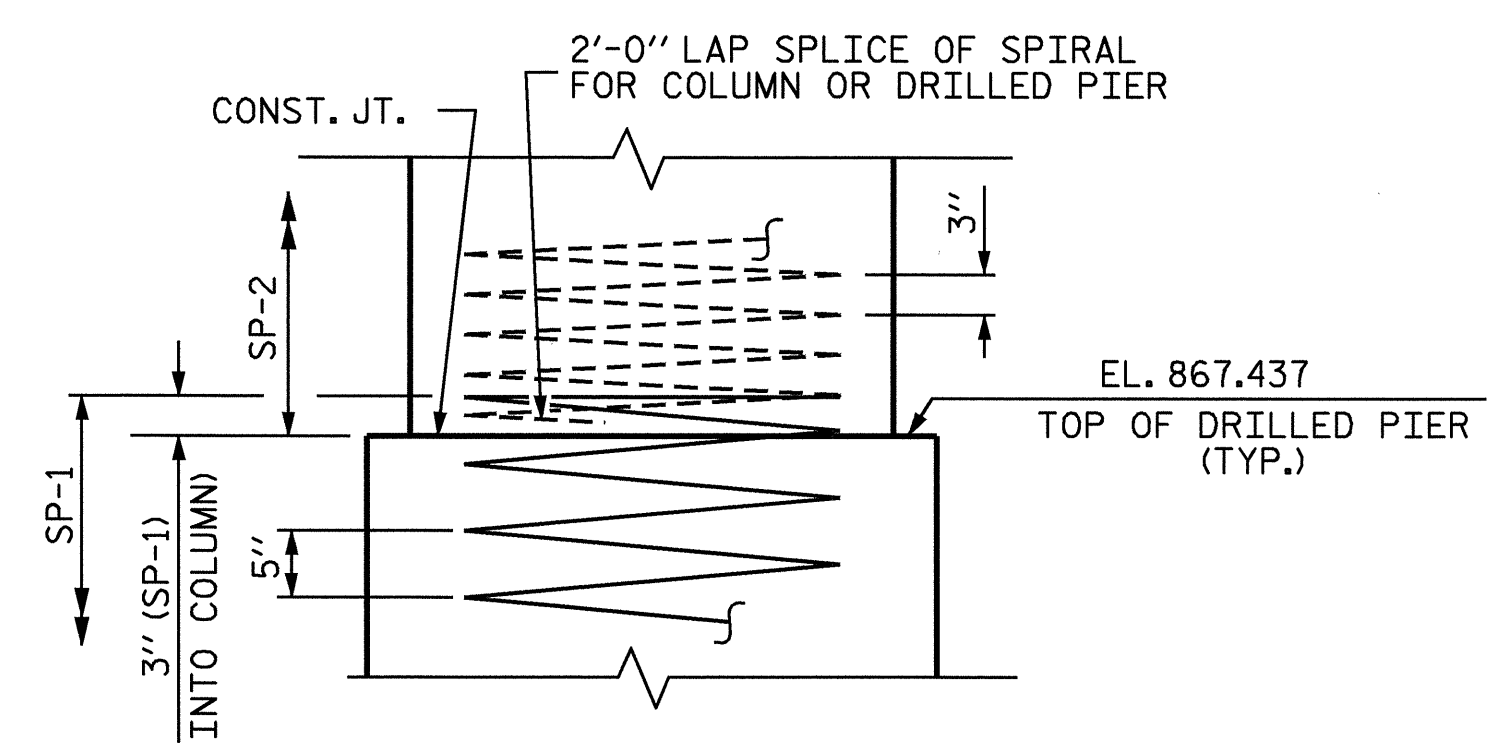


SECTION A-A

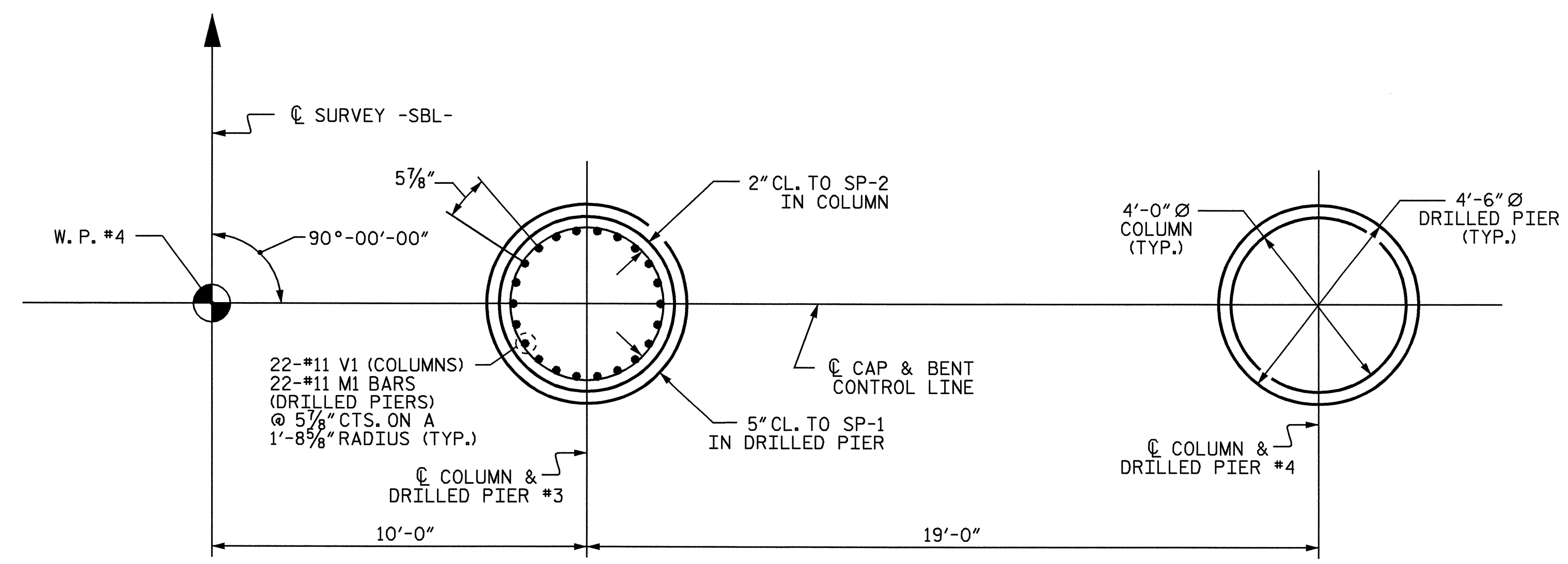
SECTION B-B



RIGHT END VIEW



CONSTRUCTION JOINT DETAIL

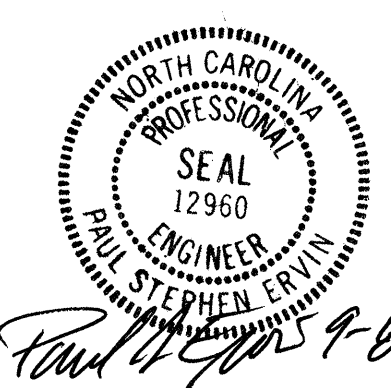


PLAN OF COLUMNS AND DRILLED PIERS

DIMENSIONS AND REINFORCING STEEL SHOWN ARE TYPICAL FOR EACH DRILLED PIER

BAR TYPES		BILL OF MATERIAL				
BENT 3 STAGE II						
BAR	NO.	SIZE	TYPE	LENGTH	WEIGHT	
B1	6	#10		40'-2"	1037	
B2	6	#10	STR	38'-10"	1003	
B3	14	#5	STR	38'-10"	567	
B4	6	#4	STR	17'-9"	71	
M1	44	#11	STR	33'-5"	7812	
S1	50	#5	2	14'-4"	747	
U1	32	#4	3	7'-4"	157	
U2	4	#4	3	7'-1"	19	
U3	4	#4	3	7'-11"	21	
V1	44	#11	1	37'-11"	8864	
REINFORCING STEEL				LBS.	20298	
SP-1	2	**	5	670'-6"	1399	
SP-2	2	***	4	1606'-2"	2146	
TOTAL SPIRAL COLUMN REINFORCING STEEL				LBS.	3545	
CLASS 'A' CONCRETE BREAKDOWN						
POUR #2 (COLUMNS)				CU.YD.	31.9	
POUR #3 (CAP)				CU.YD.	40.6	
TOTAL CONCRETE				CU.YD.	72.5	
DRILLED PIER QUANTITIES						
DRILLED PIER CONCRETE						
POUR #1 (DRILLED PIERS)				CU.YD.	27.7	
4'-6" Ø DRILLED PIER NOT IN SOIL				LIN. FT.	13.50	
4'-6" Ø DRILLED PIER IN SOIL				LIN. FT.	33.50	
PERMANENT STEEL CASING FOR 4'-6" Ø DRILLED PIER				LIN. FT.	24.87	
CSL TUBES				LIN. FT.	208.00	

ALL BAR DIMENSIONS ARE OUT TO OUT.
 ** THE SP-1 SPIRAL REINFORCING STEEL SHALL BE W31 OR D-31 COLD DRAWN WIRE OR #5 PLAIN OR DEFORMED BAR.
 *** THE SP-2 SPIRAL REINFORCING STEEL SHALL BE W20 OR D-20 COLD DRAWN WIRE OR #4 PLAIN OR DEFORMED BAR.



PROJECT NO. I-4025A
 YADKIN-SURRY COUNTY
 STATION: 28+95.00-SBL-

SHEET 2 OF 2

STATE OF NORTH CAROLINA DEPARTMENT OF TRANSPORTATION RALEIGH					
SUBSTRUCTURE					
BENT 3 STAGE II					
REVISIONS					
NO.	BY:	DATE:	NO.	BY:	DATE:
1			3		
2			4		

SHEET NO. 655
 TOTAL SHEETS 18

DRAWN BY: B.N.BARODAWALA DATE: 7-12-04
 CHECKED BY: P.S.ERVIN DATE: 8-17-04