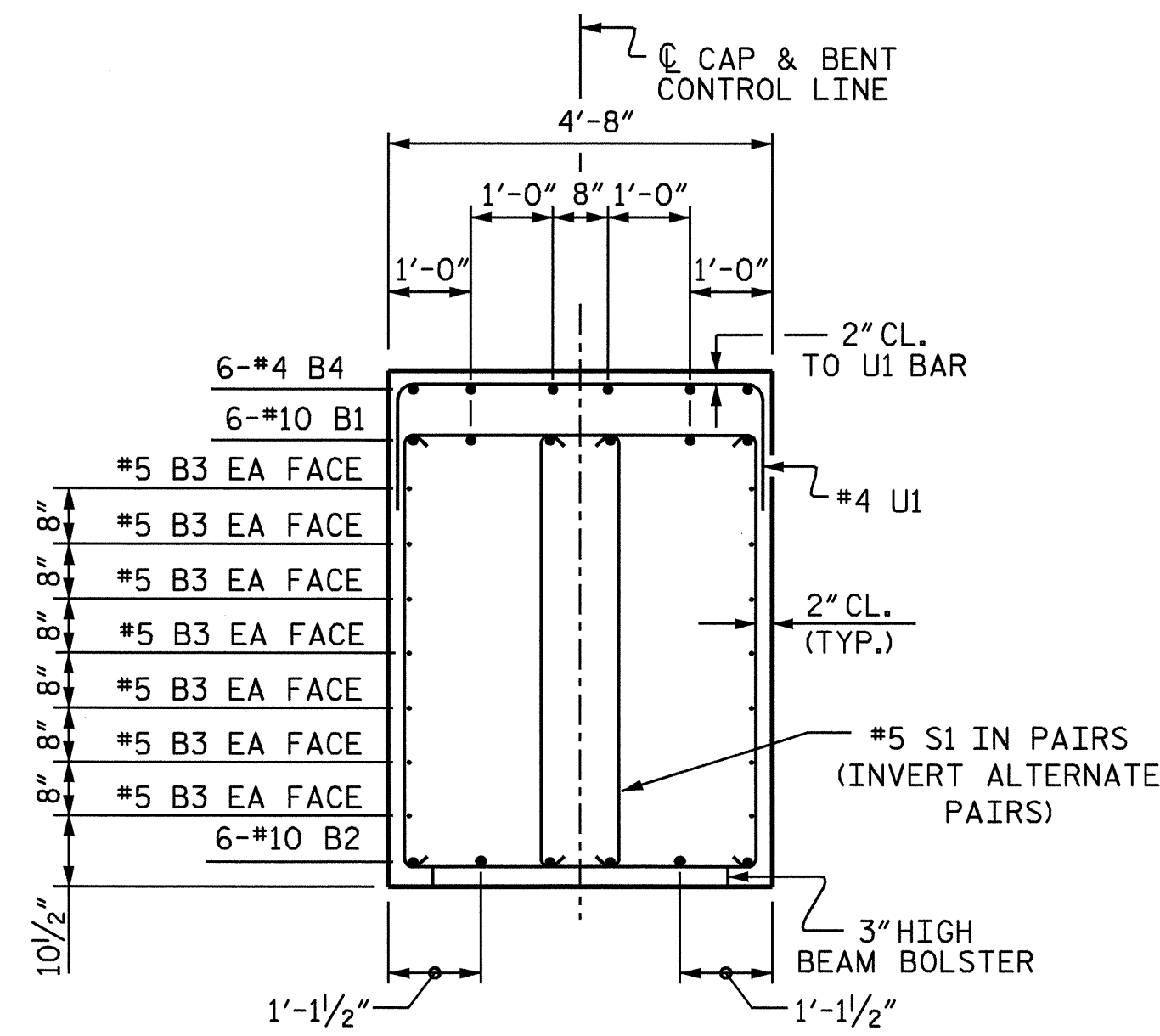
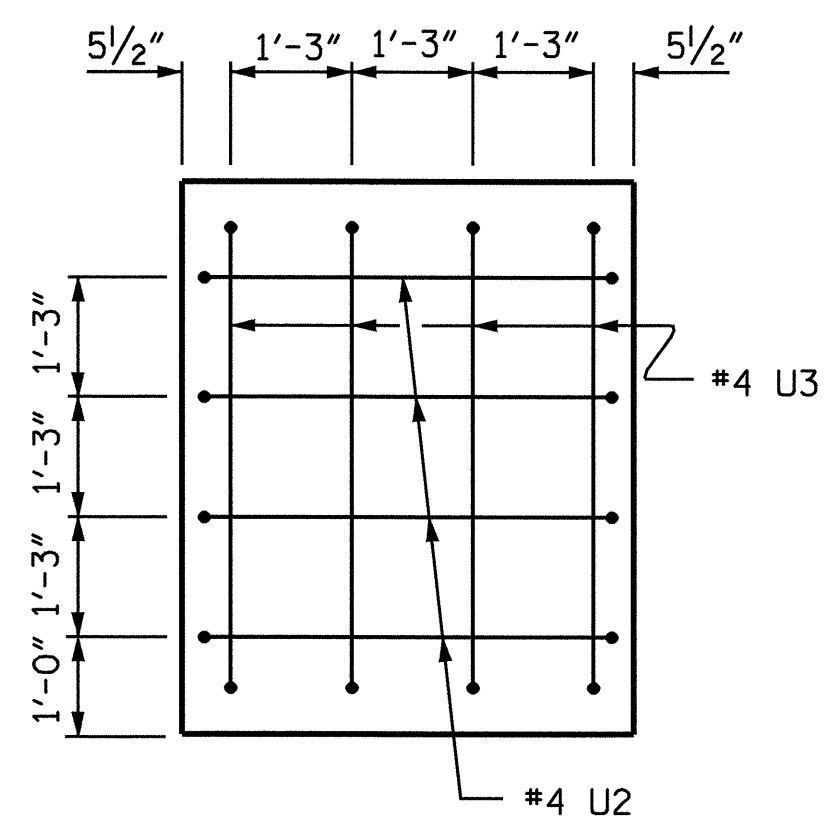


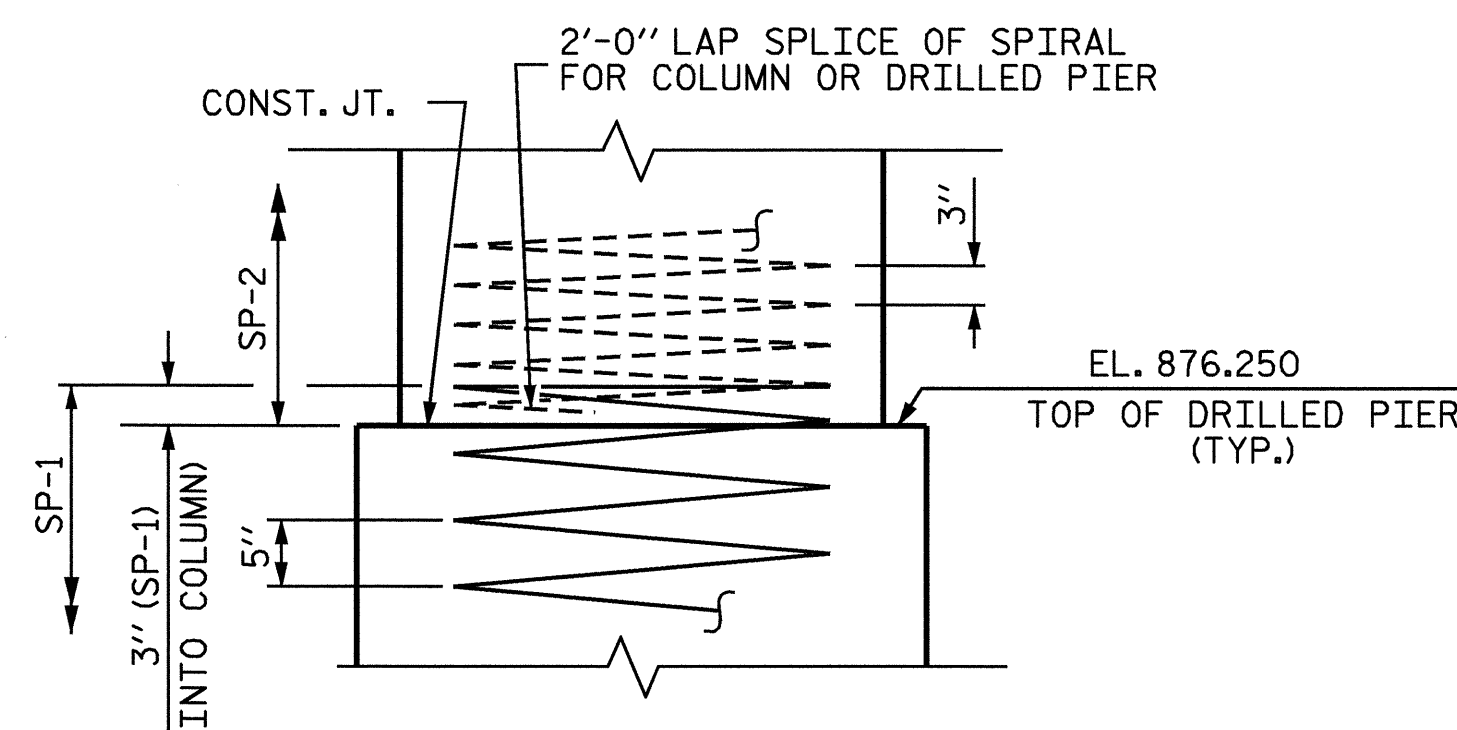
SECTION A-A



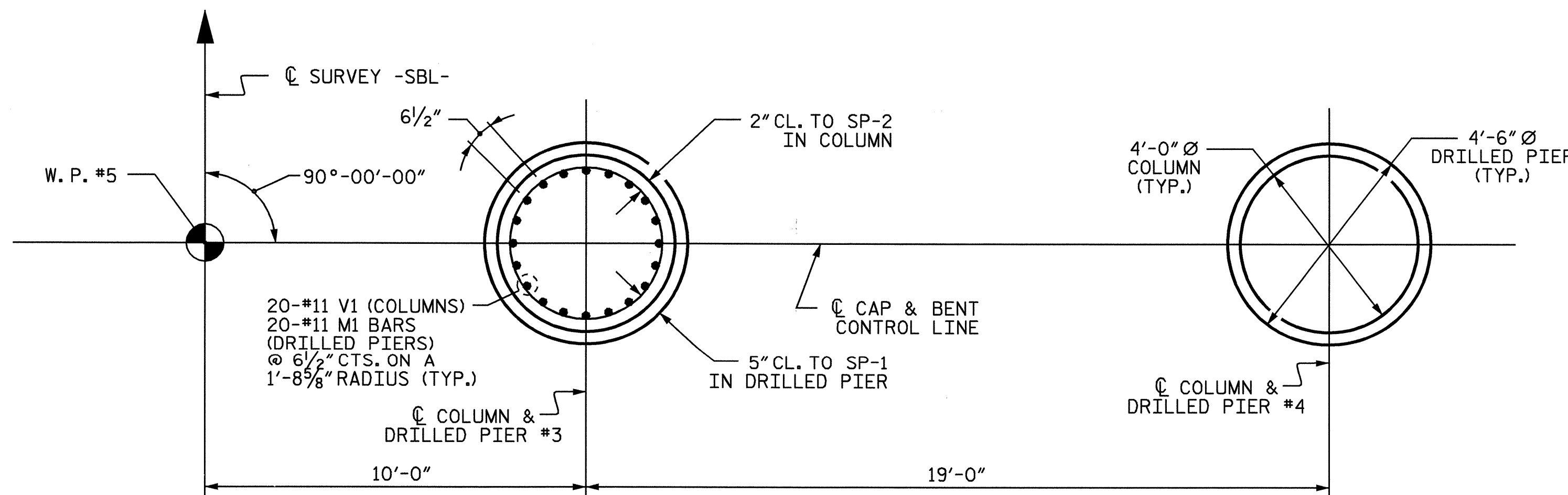
SECTION B-B



RIGHT END VIEW



CONSTRUCTION JOINT DETAIL



PLAN OF COLUMNS AND DRILLED PIERS

DIMENSIONS AND REINFORCING STEEL SHOWN ARE TYPICAL FOR EACH DRILLED PIER

BAR TYPES					BILL OF MATERIAL					
BENT 4 STAGE II										
BAR	NO.	SIZE	TYPE	LENGTH	WEIGHT					
B1	6	#10		40'-2"	1037					
B2	6	#10	STR	38'-10"	1003					
B3	14	#5	STR	38'-10"	567					
B4	6	#4	STR	17'-9"	71					
M1	40	#11	STR	42'-2"	8961					
S1	50	#5	2	14'-4"	747					
U1	32	#4	3	7'-4"	157					
U2	4	#4	3	7'-1"	19					
U3	4	#4	3	7'-11"	21					
V1	40	#11	1	31'-8"	6730					
REINFORCING STEEL					LBS.	19313				
SP-1	2	**	4	909'-1"	1896					
SP-2	2	***	5	1321'-5"	1765					
TOTAL SPIRAL COLUMN REINFORCING STEEL					LBS.	3661				
CLASS 'A' CONCRETE BREAKDOWN										
POUR #2 (COLUMNS)					CU.YD.	26.1				
POUR #3 (CAP)					CU.YD.	40.6				
TOTAL CONCRETE					CU.YD.	66.7				
DRILLED PIER QUANTITIES										
DRILLED PIER CONCRETE										
POUR #1 (DRILLED PIERS)					CU.YD.	38.0				
4'-6" Ø DRILLED PIER NOT IN SOIL					LIN. FT.	16.50				
4'-6" Ø DRILLED PIER IN SOIL					LIN. FT.	48.00				
CSL TUBES					LIN. FT.	278.00				

ALL BAR DIMENSIONS ARE OUT TO OUT.
 * THE SP-1 SPIRAL REINFORCING STEEL SHALL BE W31 OR D-31 COLD DRAWN WIRE OR #5 PLAIN OR DEFORMED BAR.
 ** THE SP-2 SPIRAL REINFORCING STEEL SHALL BE W20 OR D-20 COLD DRAWN WIRE OR #4 PLAIN OR DEFORMED BAR.

PROJECT NO. I-4025A
 YADKIN-SURRY COUNTY
 STATION: 28+95.00-SBL-

SHEET 2 OF 2

STATE OF NORTH CAROLINA
 DEPARTMENT OF TRANSPORTATION
 RALEIGH

SUBSTRUCTURE

BENT 4
 STAGE II



REVISIONS					SHEET NO.
NO.	BY:	DATE:	NO.	BY:	DATE:
1			3		
2			4		

DRAWN BY: B.N.BARODAWALA DATE: 7-12-04
 CHECKED BY: P.S.ERVIN DATE: 8-17-04

18-AUG-2004 07:33
 w:\Squadd\14025a\bbarodawala\I-4025A.sd.B1-6.01.dgn
 bbarodawala