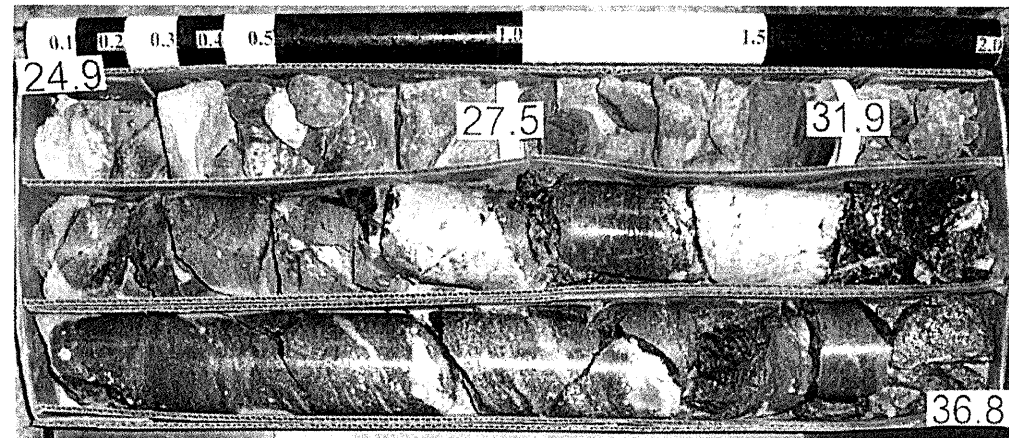
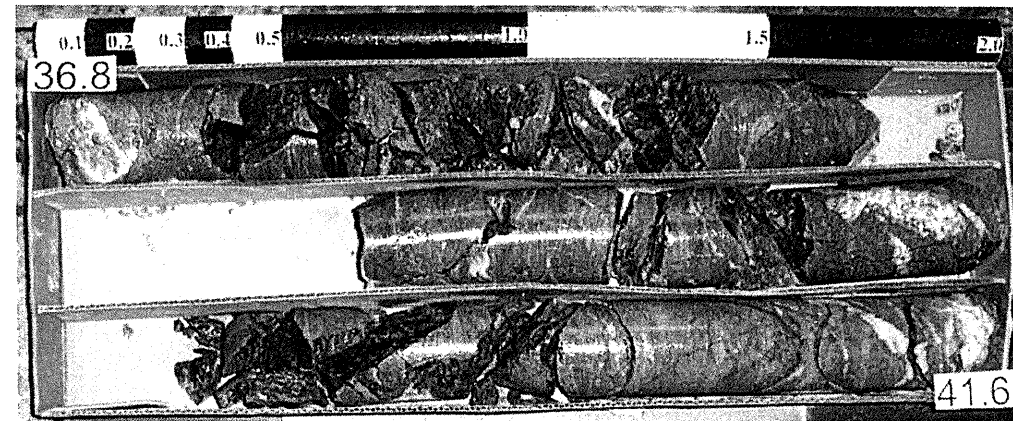


# CORE PHOTOGRAPHS

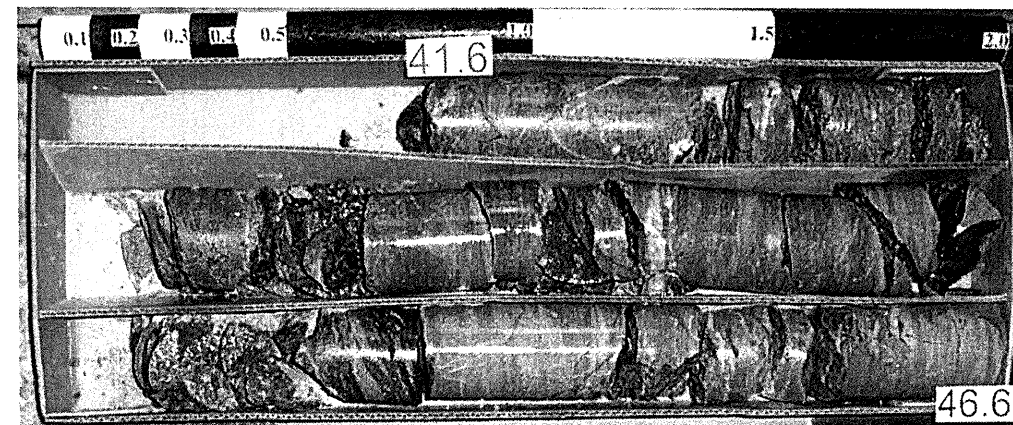
Bridge No. 13 on I-77 SBL over the Yadkin River, Yadkin Valley Railroad, and NC 268  
WBS Element No. 34209.1.1 TIP No. I-4025A  
B2-A SS



Box 1 of 6



Box 2 of 6

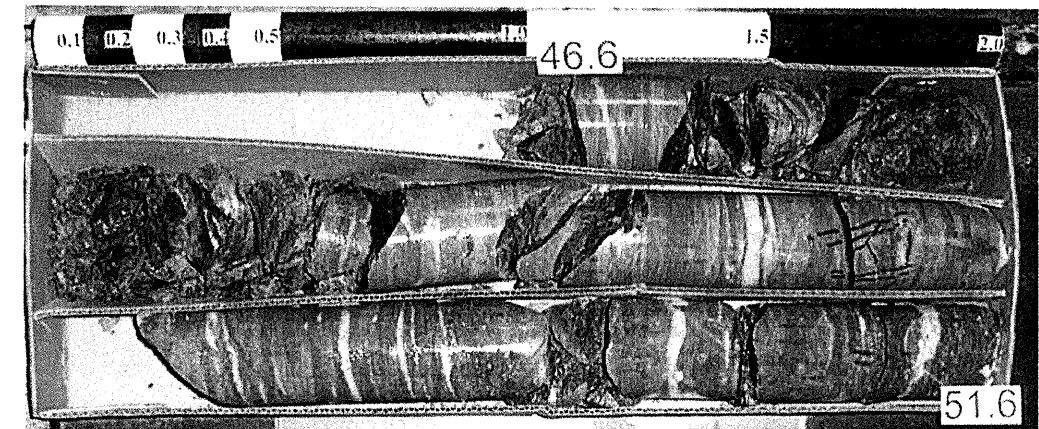


Box 3 of 6

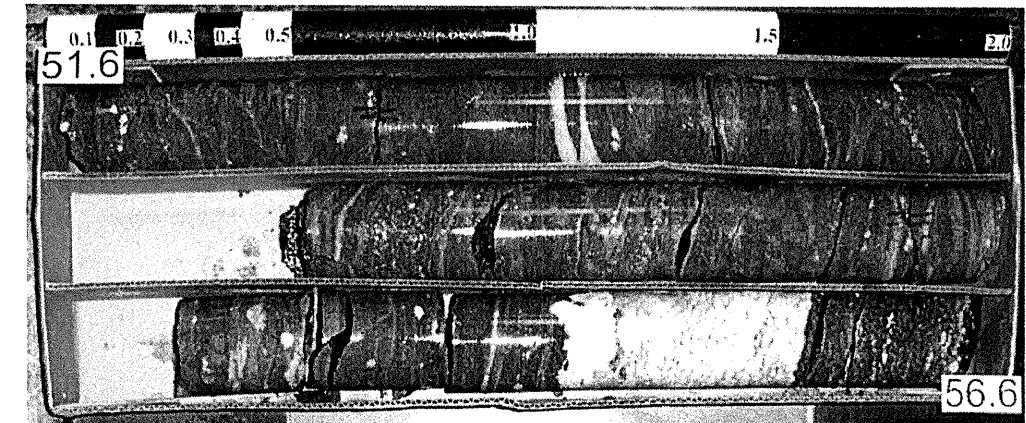
(SCALE = 1:4)

# CORE PHOTOGRAPHS

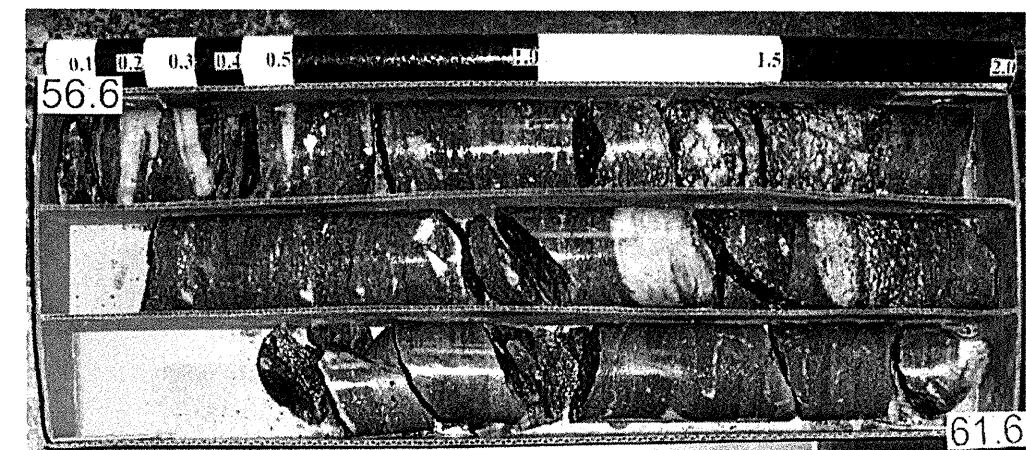
Bridge No. 13 on I-77 SBL over the Yadkin River, Yadkin Valley Railroad, and NC 268  
WBS Element No. 34209.1.1 TIP No. I-4025A  
B2-A SS



Box 4 of 6



Box 5 of 6



Box 6 of 6

(SCALE = 1:4)