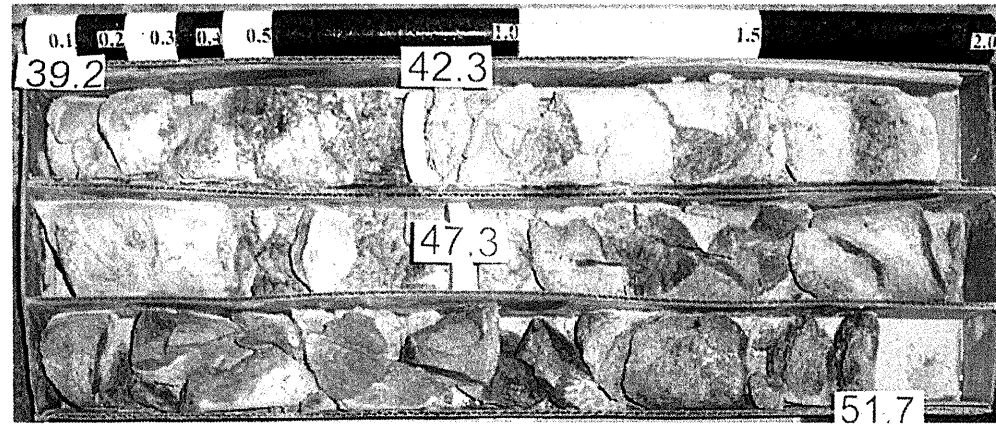
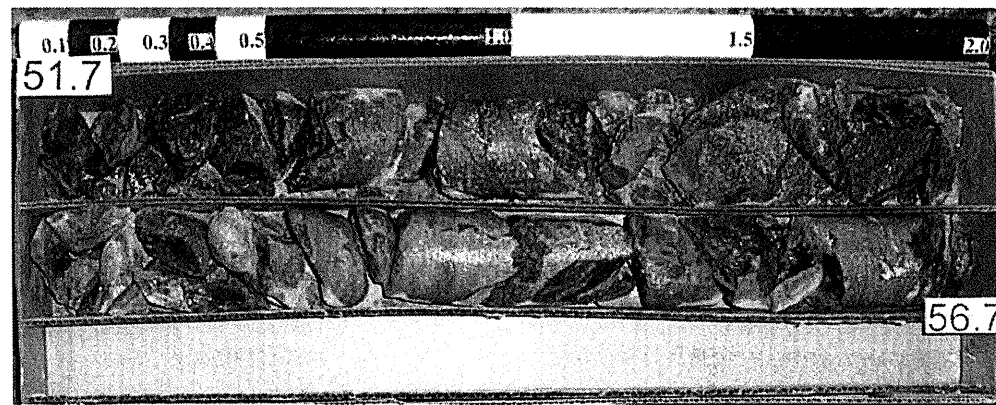


CORE PHOTOGRAPHS

Bridge No. 13 on I-77 SBL over the Yadkin River, Yadkin Valley Railroad, and NC 268
WBS Element No. 34209.1.1 TIP No. I-4025A
B6-B CS



Box 1 of 4

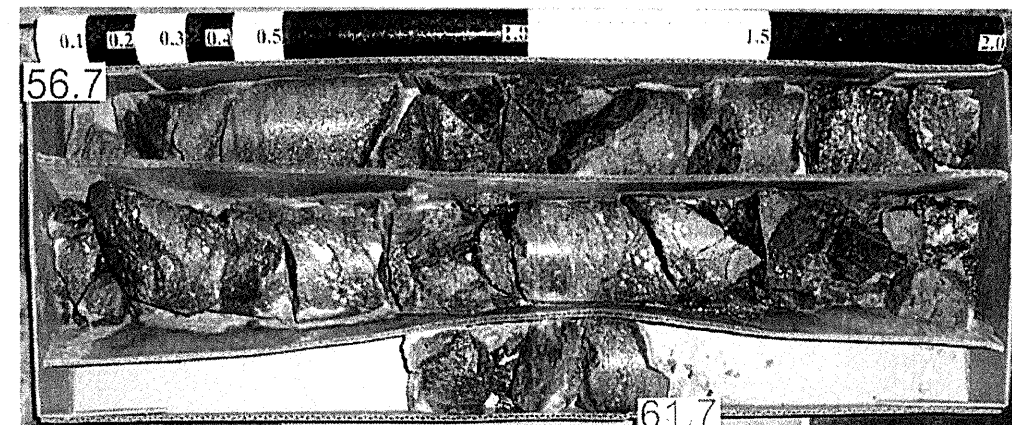


Box 2 of 4

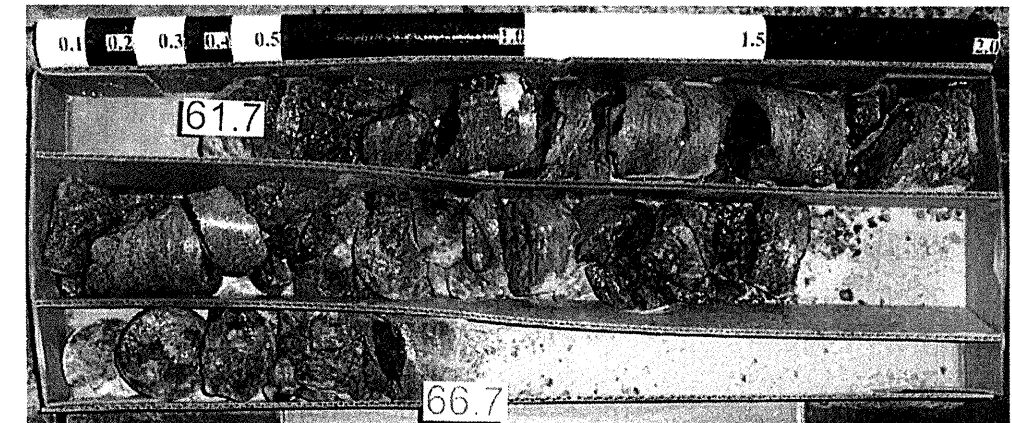
(SCALE = 1:4)

CORE PHOTOGRAPHS

Bridge No. 13 on I-77 SBL over the Yadkin River, Yadkin Valley Railroad, and NC 268
WBS Element No. 34209.1.1 TIP No. I-4025A
B6-B CS



Box 3 of 4



Box 4 of 4

(SCALE = 1:4)