
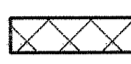
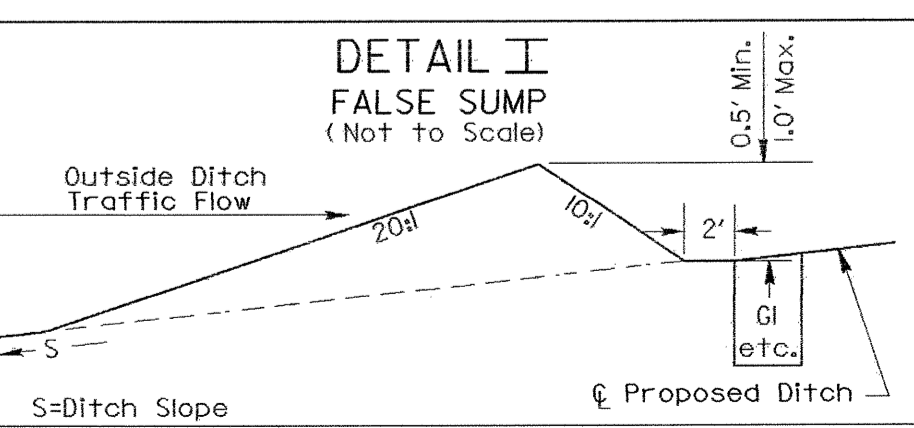
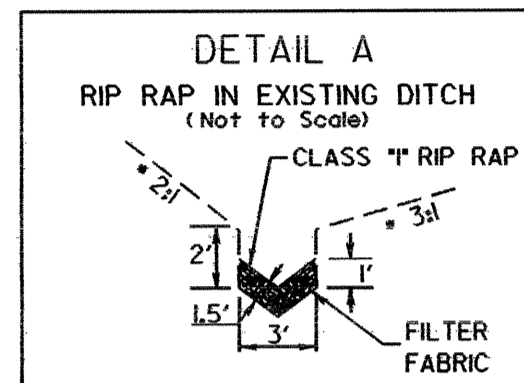
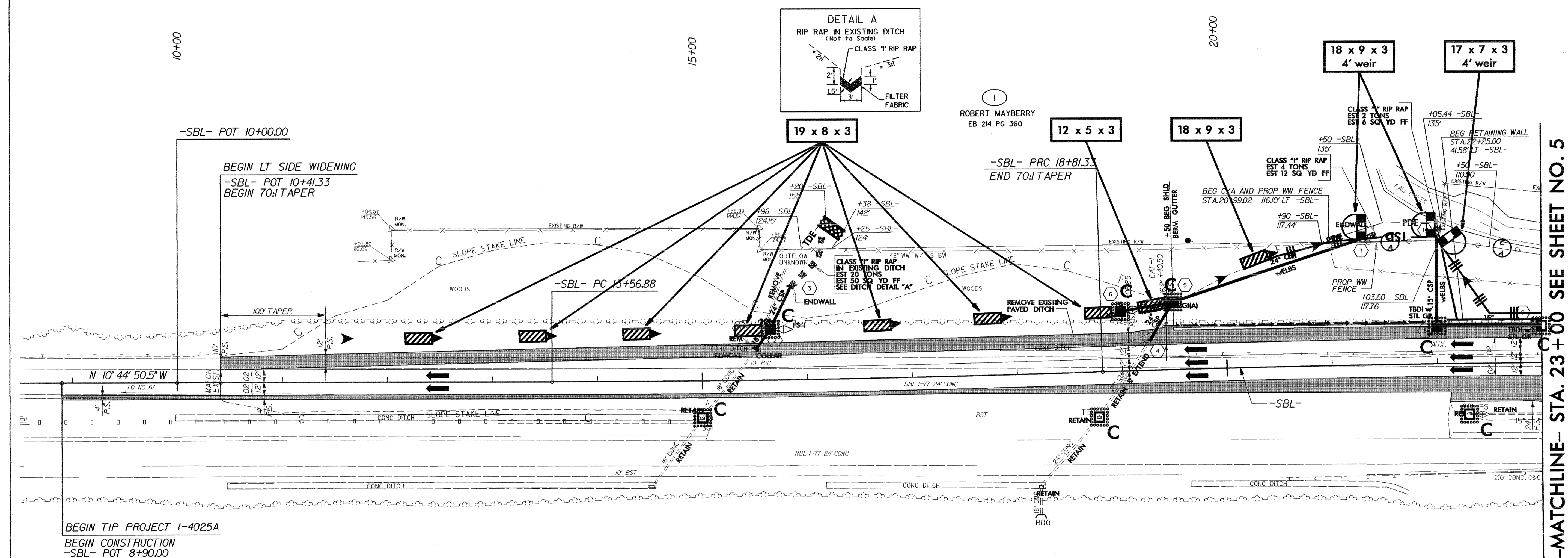
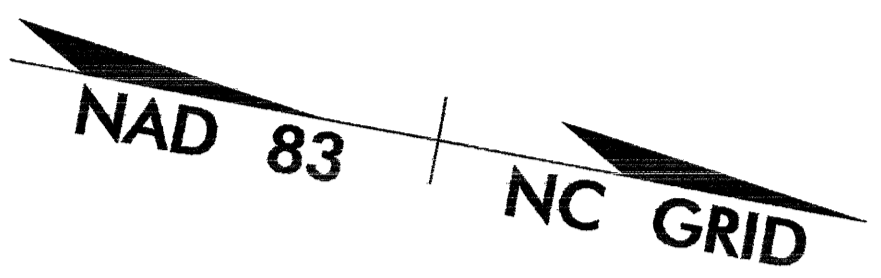


LEGEND

 PAVED SHOULDER
 PAVEMENT REMOVAL

-SBL-

PI Sta 16+19.12 Δ = 1' 44" 53.4" (LT) D = 0' 20" 00.0" L = 524.45' T = 262.24' R = 17,188.73' SE = NC DS = 70 MPH	PI Sta 21+43.58 Δ = 1' 44" 53.4" (RT) D = 0' 20" 00.0" L = 524.46' T = 262.25' R = 17,188.73' SE = NC DS = 70 MPH
--	--



DATUM DESCRIPTION

THE LOCALIZED COORDINATE SYSTEM DEVELOPED FOR THIS PROJECT IS BASED ON THE STATE PLANE COORDINATES ESTABLISHED BY NCGS FOR MONUMENT "MEDIAN" WITH NAD 83 STATE PLANE GRID COORDINATES OF NORTHING: 916839.7542(ft) EASTING: 1462727.2025(ft) THE AVERAGE COMBINED GRID FACTOR USED ON THIS PROJECT (GROUND TO GRID) IS: 0.9999883 THE N.C. LAMBERT GRID BEARING LOCALIZED HORIZONTAL GROUND DISTANCE FROM "MEDIAN" TO -SBL- STATION 8+90.00 IS S 10°07'52.1" E , 3783.84' ALL LINEAR DIMENSIONS ARE LOCALIZED HORIZONTAL DISTANCES VERTICAL DATUM USED IS NGVD 29

FOR DETOUR PLANS, SEE SHEETS 2-C THRU 2-E
FOR RETAINING WALL DETAIL, SEE SHEET 2-F
FOR -SBL- PROFILE, SEE SHEET 7

-MATCHLINE- STA. 23+00 SEE SHEET NO. 5