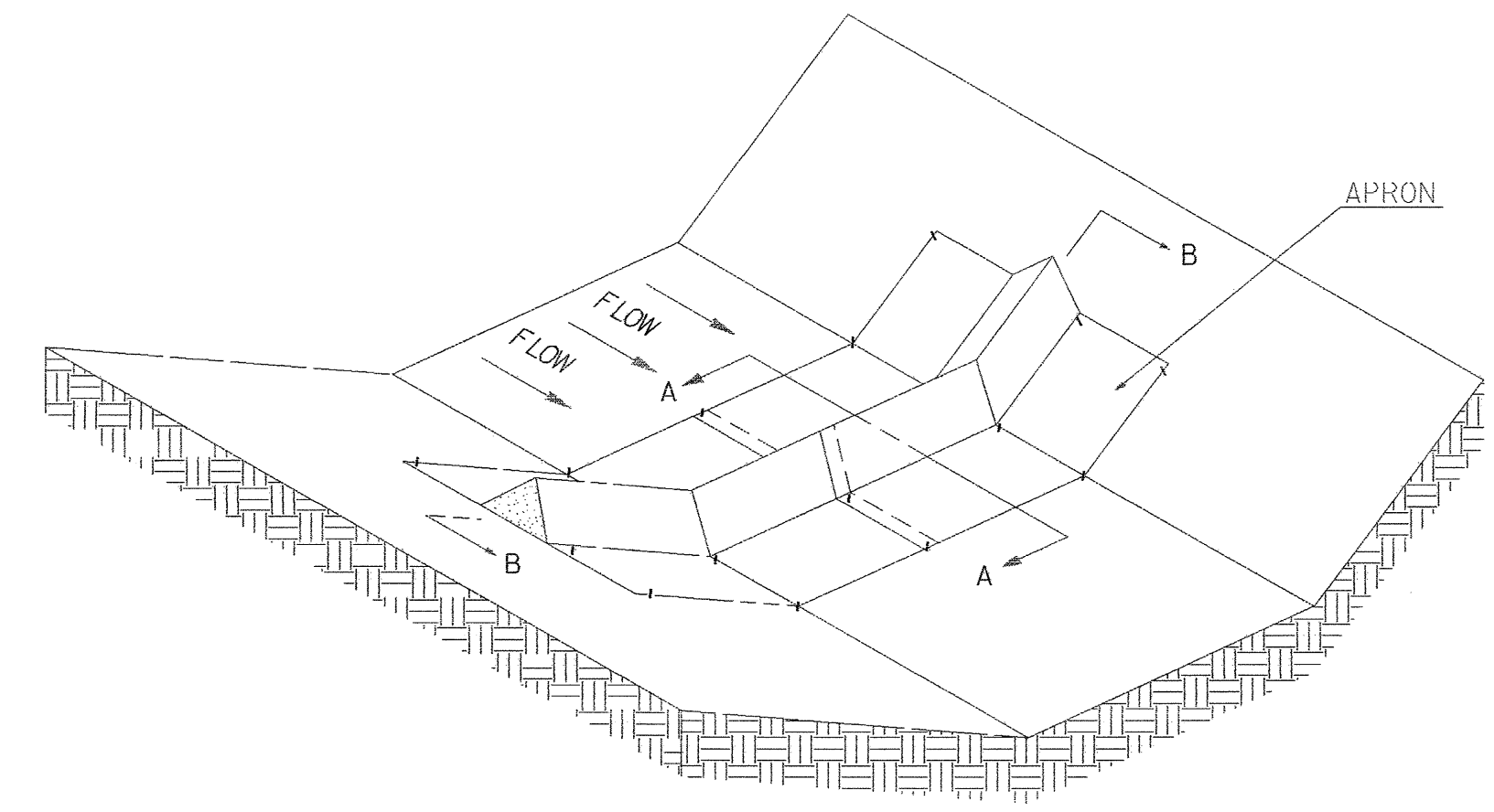
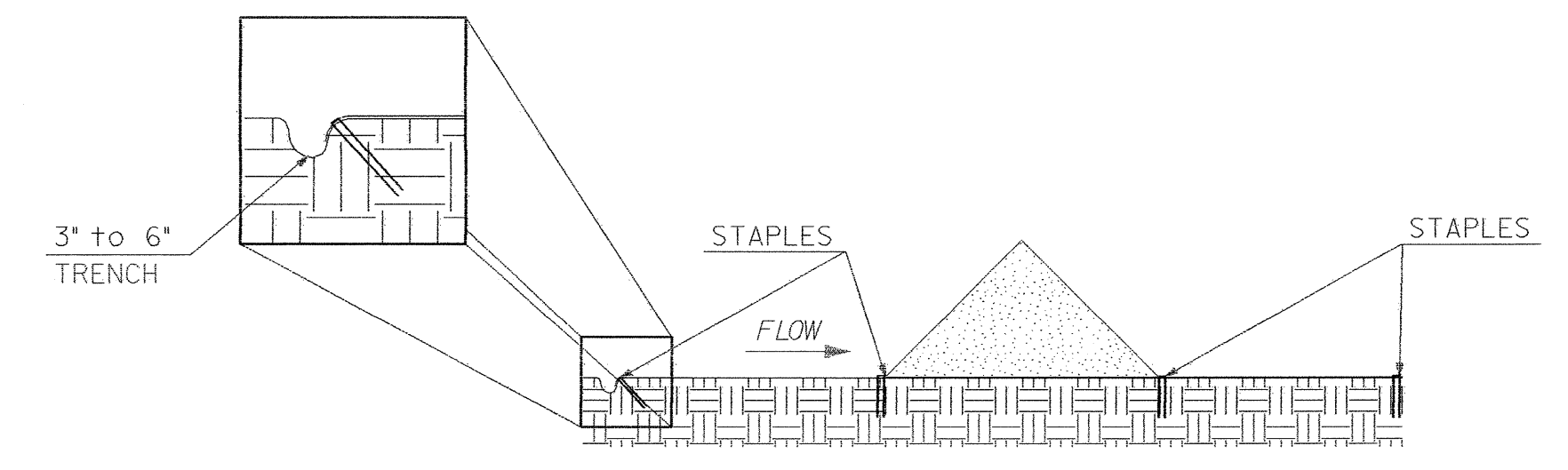


PROJ. REFERENCE NO. <b>B-3695</b>	SHEET NO. <b>EC-6</b>	TOTAL SHEETS
STATE PROJECT NO.	F.A. PROJ. NO.	DESCRIPTION

# TEMPORARY SILT DIKE DETAIL

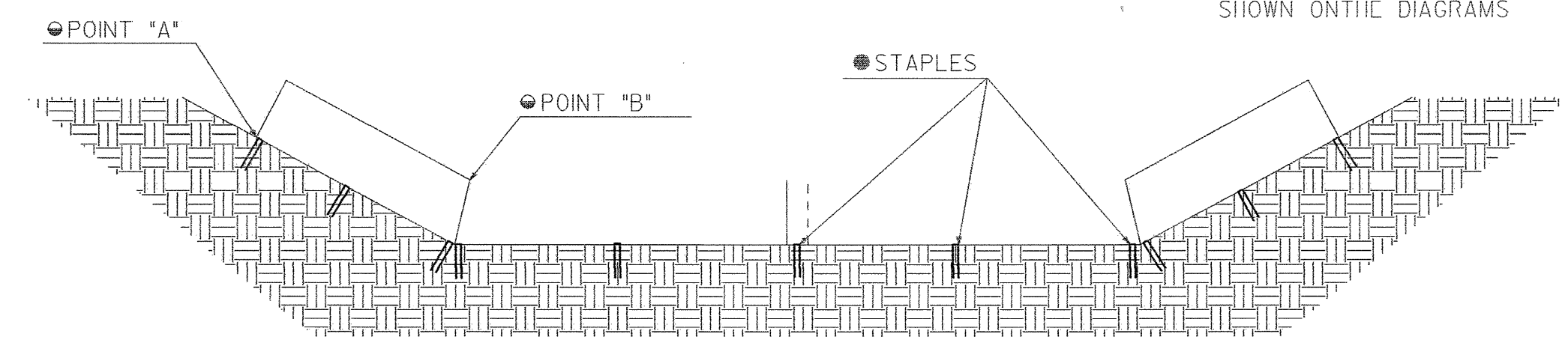


SILT DIKE UNIT  
CUT SECTION



DETAIL A-A

● STAPLES SHALL BE PLACED WHERE THE UNITS OVERLAP AND IN THE CENTER OF THE 7' UNIT AS SHOWN ON THE DIAGRAMS



DIKE SECTION  
DETAIL B-B

● POINT "A" MUST BE HIGHER THAN POINT "B" TO ENSURE THAT WATER FLOWS OVER THE DIKE AND NOT AROUND THE ENDS.