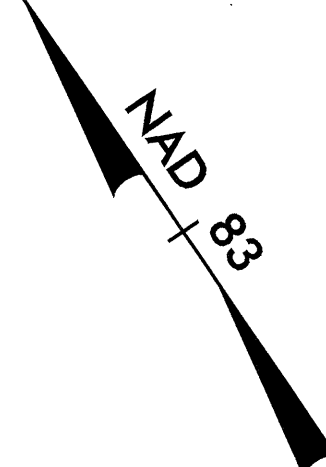
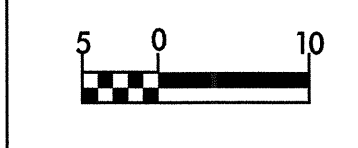


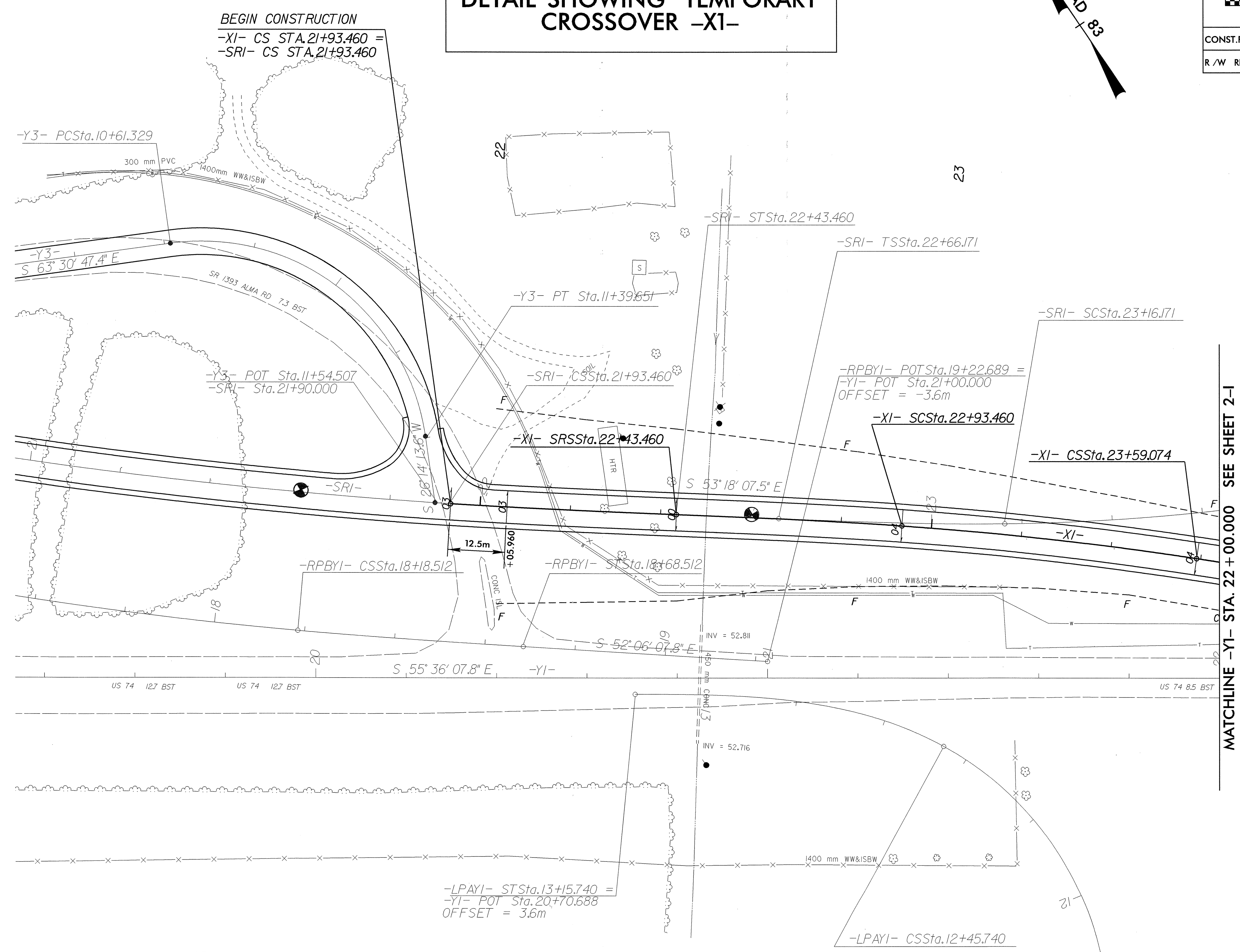
8.17.2009



PROJECT REFERENCE NO. R-0513A	SHEET NO. 4-A
R/W SHEET NO.	
ROADWAY DESIGN ENGINEER	HYDRAULICS ENGINEER
<b>PRELIMINARY PLANS</b> DO NOT USE FOR CONSTRUCTION <b>INCOMPLETE PLANS</b> DO NOT USE FOR R/W ACQUISITION	
CONST. REV.	
R/W REV.	



**DETAIL SHOWING TEMPORARY CROSSOVER -X1-**



-SRI-			-X1-			
PIs Sta. 22+99.510	PI Sta. 23+56.675	PIs Sta. 24+13.654	PIs Sta. 22+10.128	PIs Sta. 22+76.795	PI Sta. 23+26.285	PIs Sta. 23+75.743
Os = 3°00'56.0"	Δ = 9°44'51.6" (LT)	Os = 3°00'56.0"	Os = 1°14'05.4"	Os = 1°44'10.4"	Δ = 4°33'24.7" (RT)	Os = 1°44'10.4"
Ls = 50.000	L = 80.811	Ls = 50.000	Ls = 50.000	Ls = 50.000	L = 65.614	Ls = 50.000
LT = 33.338	T = 40.503	LT = 33.338	LT = 33.334	LT = 33.335	T = 32.824	LT = 33.335
ST = 16.671	R = 475.000	ST = 16.671	ST = 16.667	ST = 16.668	R = 825.000	ST = 16.668
	SE = SEE PLANS					

NOTE: FOR PROFILE OF -X1- SEE SHEET NO. 66

09-NOV-2000 09:38  
T:\A\0513A\pro\Xcoveva\_det.dgn