


09-NOV-2000 09:38 P:\19615\proj\newarc.dwg

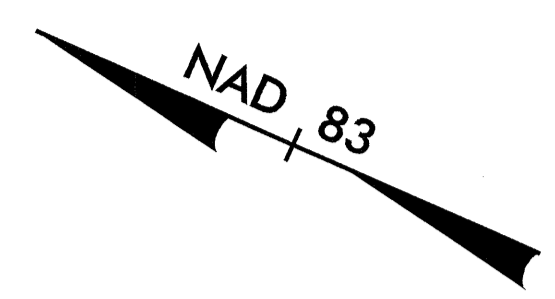
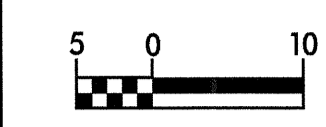
-X2-

| | | |
|-------------------------------------|-------------------------------------|---------------------------------|
| PI Sta 10+95.217 | PI Sta 13+03.175 | PIs Sta 14+20.568 |
| $\Delta = 12^\circ 38' 27.2''$ (LT) | $\Delta = 12^\circ 39' 40.5''$ (RT) | $\Theta_s = 1^\circ 14' 05.4''$ |
| L = 255.925 | L = 50.826 | Ls = 50.000 |
| T = 128.484 | T = 25.517 | LT = 33.334 |
| R = 1,160.000 | R = 230.000 | ST = 16.667 |
| SE = 0.03 | SE = 0.08 | |
| RO = 22.5m (7.5m INCR.) | RO = 60m (7.5m INCR.) | |

-X3-

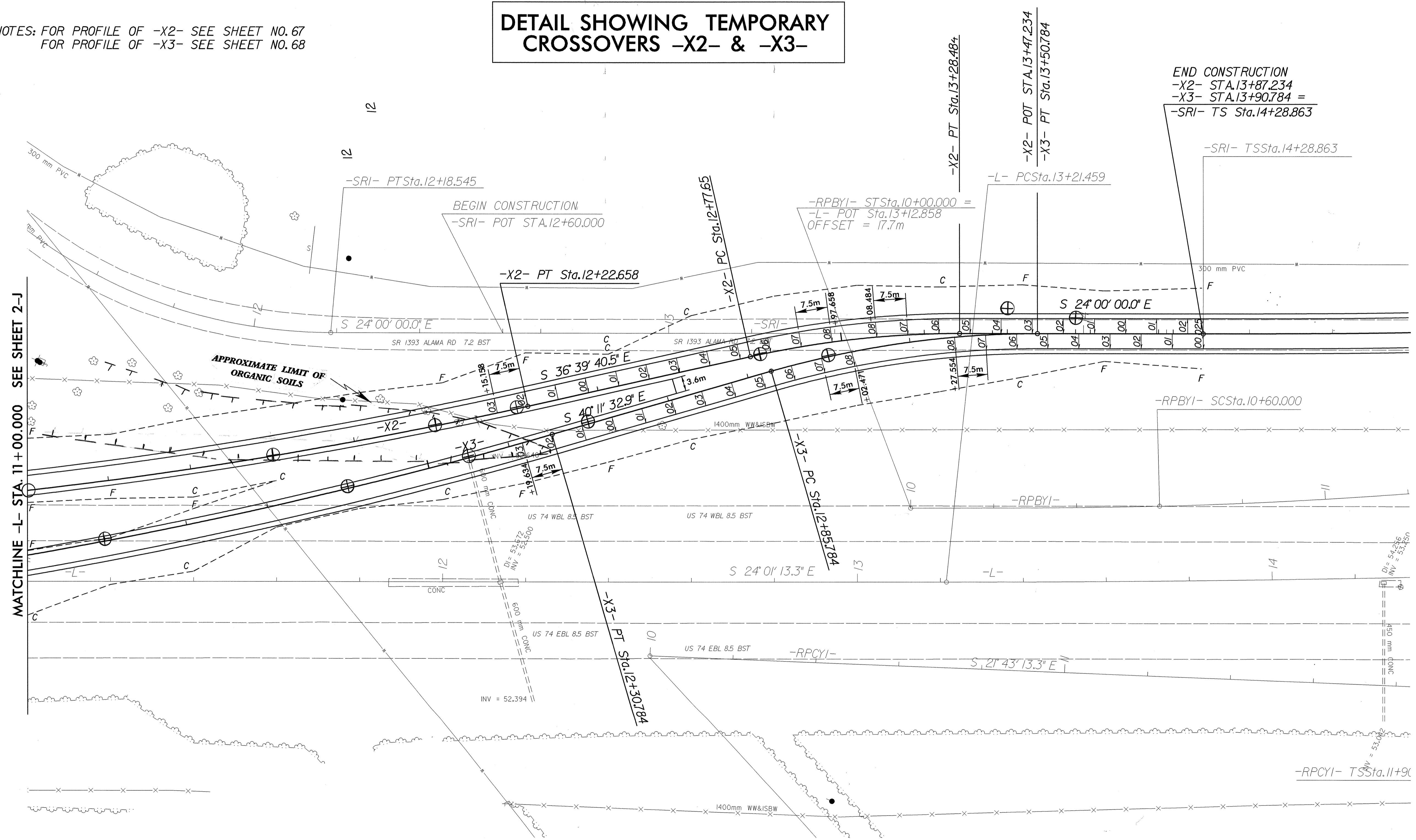
| | | |
|-------------------------------------|-------------------------------------|---------------------------------|
| PI Sta 10+68.170 | PI Sta 13+18.502 | PIs Sta 14+24.119 |
| $\Delta = 16^\circ 10' 19.6''$ (LT) | $\Delta = 16^\circ 11' 32.9''$ (RT) | $\Theta_s = 1^\circ 14' 05.4''$ |
| L = 327.418 | L = 65.001 | Ls = 50.000 |
| T = 164.804 | T = 32.718 | LT = 33.334 |
| R = 1,160.000 | R = 230.000 | ST = 16.667 |
| SE = 0.03 | SE = 0.08 | |
| RO = 22.5m (7.5m INCR.) | RO = 60m (7.5m INCR.) | |

| | | |
|--|-----------------------|-----------|
|  | PROJECT REFERENCE NO. | SHEET NO. |
| | R-0513A | 4-D |
| | R/W SHEET NO. | |
| ROADWAY DESIGN ENGINEER | HYDRAULICS ENGINEER | |
| PRELIMINARY PLANS <small>DO NOT USE FOR CONSTRUCTION</small> | | |
| INCOMPLETE PLANS <small>DO NOT USE FOR R/W ACQUISITION</small> | | |
| CONST. REV. | | |
| R/W REV. | | |



DETAIL SHOWING TEMPORARY CROSSOVERS -X2- & -X3-

NOTES: FOR PROFILE OF -X2- SEE SHEET NO. 67
 FOR PROFILE OF -X3- SEE SHEET NO. 68



END CONSTRUCTION
 -X2- STA.13+87.234
 -X3- STA.13+90.784 =
 -SRI- TS Sta.14+28.863

MATCHLINE -L- STA. 11+00.000 SEE SHEET 2-J

MATCHLINE -R- STA. 14+00.000 SEE SHEET 2-K