

METRIC

5 0 10

CONST. REV.

R/W REV.

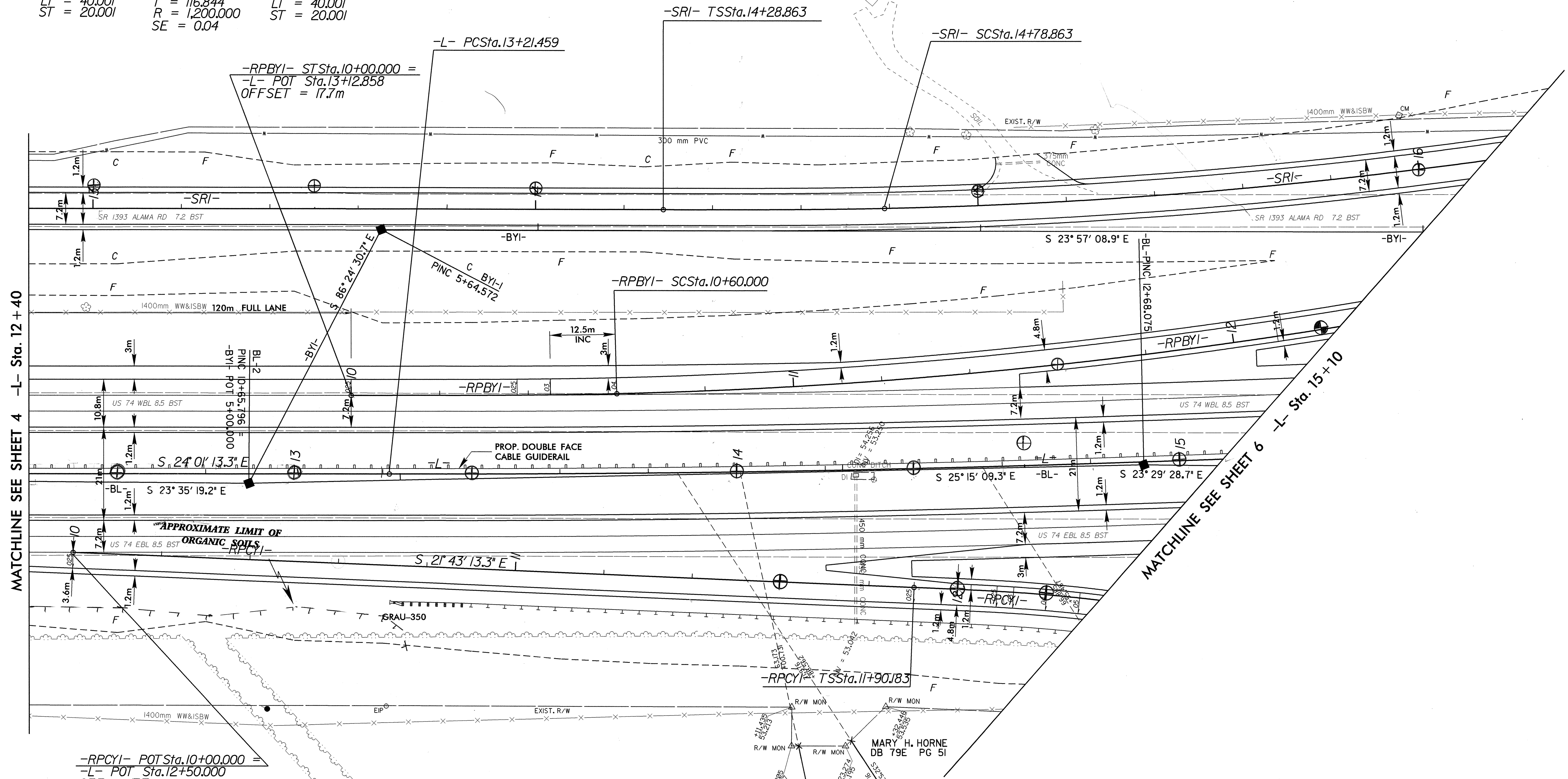
PROJECT REFERENCE NO. R-0513A	SHEET NO. 5
R/W SHEET NO.	
ROADWAY DESIGN ENGINEER	HYDRAULICS ENGINEER
PRELIMINARY PLANS DO NOT USE FOR CONSTRUCTION INCOMPLETE PLANS DO NOT USE FOR R/W ACQUISITION	

-SRI-
 Pls Sta 14+62.198 PI Sta 15+92.445 Pls Sta 17+21.973
 $\Theta_s = 1^\circ 14' 05.4''$ $\Delta = 1^\circ 11' 04.7''$ (LT) $\Theta_s = 1^\circ 14' 05.4''$
 $L_s = 50.000$ $L = 226.442$ $L_s = 50.000$
 $LT = 33.334$ $T = 113.582$ $LT = 33.334$
 $ST = 16.667$ $R = 1,160.000$ $ST = 16.667$
 $SE = 0.03$

MARY H. HORNE
 DB 79E PG 5I

MARY H. HORNE
 DB 79E PG 5I

-RPBYI-
 Pls Sta 10+40.001 PI Sta 11+76.844 Pls Sta 13+12.954
 $\Theta_s = 1^\circ 25' 56.6''$ $\Delta = 1^\circ 07' 21.7''$ (LT) $\Theta_s = 1^\circ 25' 56.6''$
 $L_s = 60.000$ $L = 232.953$ $L_s = 60.000$
 $LT = 40.001$ $T = 116.844$ $LT = 40.001$
 $ST = 20.001$ $R = 1,200.000$ $ST = 20.001$
 $SE = 0.04$



MATCHLINE SEE SHEET 4 -L- Sta. 12+40

MATCHLINE SEE SHEET 6 -L- Sta. 15+10

-RPCYI- POT Sta.10+00.000 =
 -L- POT Sta.12+50.000
 OFF = 17.7m

A. F. HORNE, JR.
 DB 646 PG 78I

MARY H. HORNE
 DB 79E PG 5I

A. F. HORNE, JR.
 DB 882 PG 40I

NOTES: FOR PROFILE OF -L- SEE SHEET NO. 30
 FOR PROFILE OF -SRI- SEE SHEET NO. 57
 FOR PROFILE OF -RPCYI- SEE SHEET NO. 46
 FOR PROFILE OF -RPBYI- SEE SHEET NO. 44

09-NOV-2000 09:38
 A:\98135\p-c\13e05.pat
 8/17/99