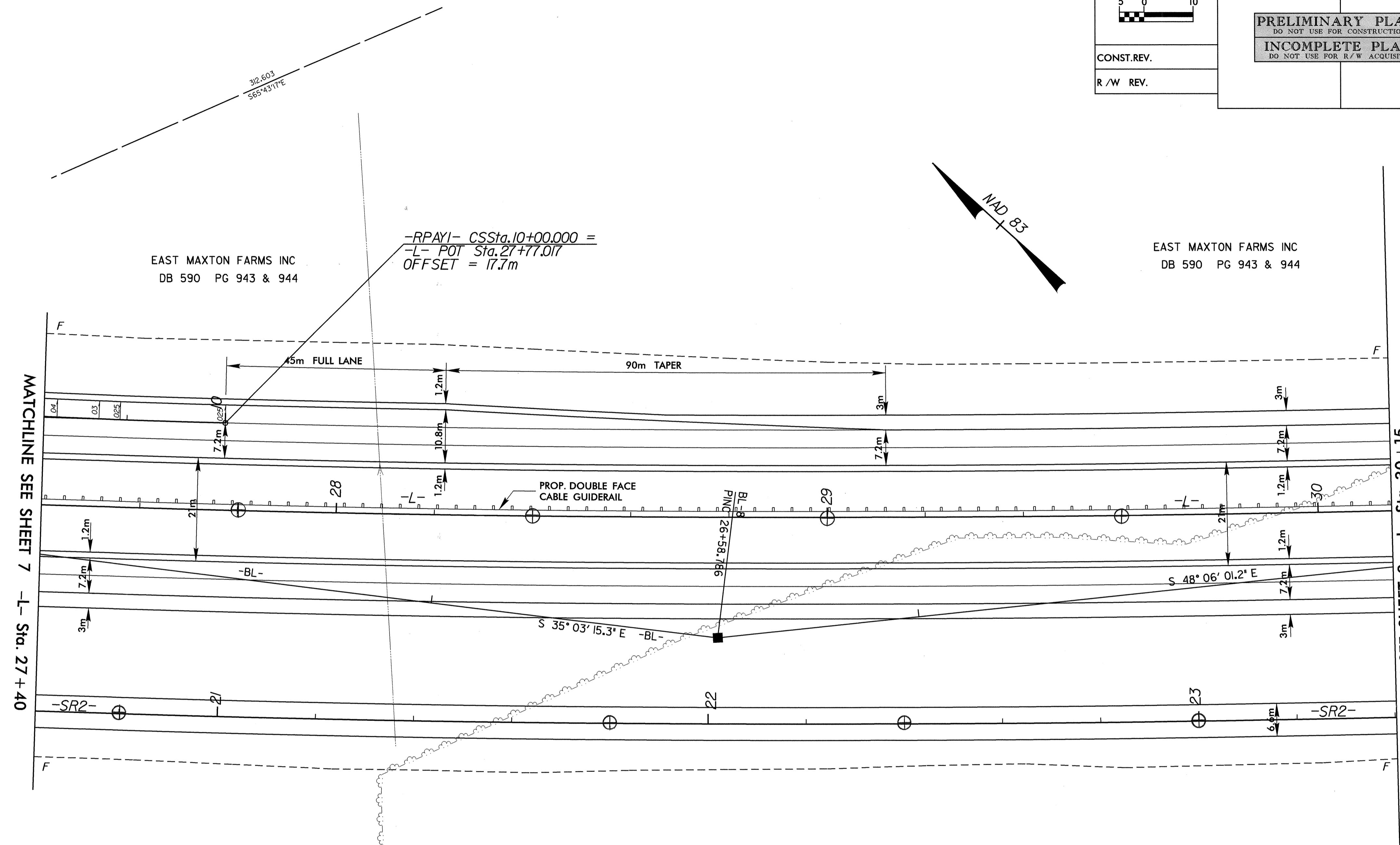
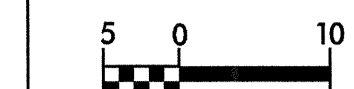


8/17/09



PROJECT REFERENCE NO. R-0513A	SHEET NO. 8
R/W SHEET NO.	
ROADWAY DESIGN ENGINEER	HYDRAULICS ENGINEER
PRELIMINARY PLANS DO NOT USE FOR CONSTRUCTION	
INCOMPLETE PLANS DO NOT USE FOR R/W ACQUISITION	
CONST. REV.	
R/W REV.	



MATCHLINE SEE SHEET 7 -L- Sta. 27+40

MATCHLINE SEE SHEET 9 -L- Sta. 30+15

-RPAYI- CSSSta. 10+00.000 =
 -L- POT Sta. 27+77.017
 OFFSET = 17.7m

EAST MAXTON FARMS INC
 DB 590 PG 943 & 944

EAST MAXTON FARMS INC
 DB 590 PG 943 & 944

EAST MAXTON FARMS INC
 DB 590 PG 943 & 944

EAST MAXTON FARMS INC
 DB 590 PG 943 & 944

-L-	-SR2-
PI Sta 22+65.663	PI Sta 22+68.843
$\Delta = 21^{\circ} 23' 15.7''$ (LT)	$\Delta = 5^{\circ} 35' 26.8''$ (LT)
L = 1,866.428	L = 487.887
T = 944.204	T = 244.137
R = 5,000.000	R = 5,000.000
SE = NC	

NOTES: FOR PROFILE OF -L- SEE SHEET NO. 32 & NO. 33
 FOR PROFILE OF -SR2- SEE SHEET NO. 60
 FOR PROFILE OF -RPAYI- SEE SHEET NO. 43

09-NOV-2000 09:38
 R:\R0513A\p-co\1\0513a08.dwg
 aubrey